

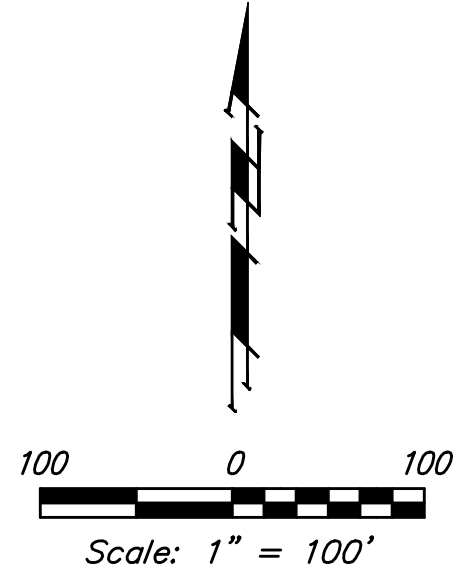
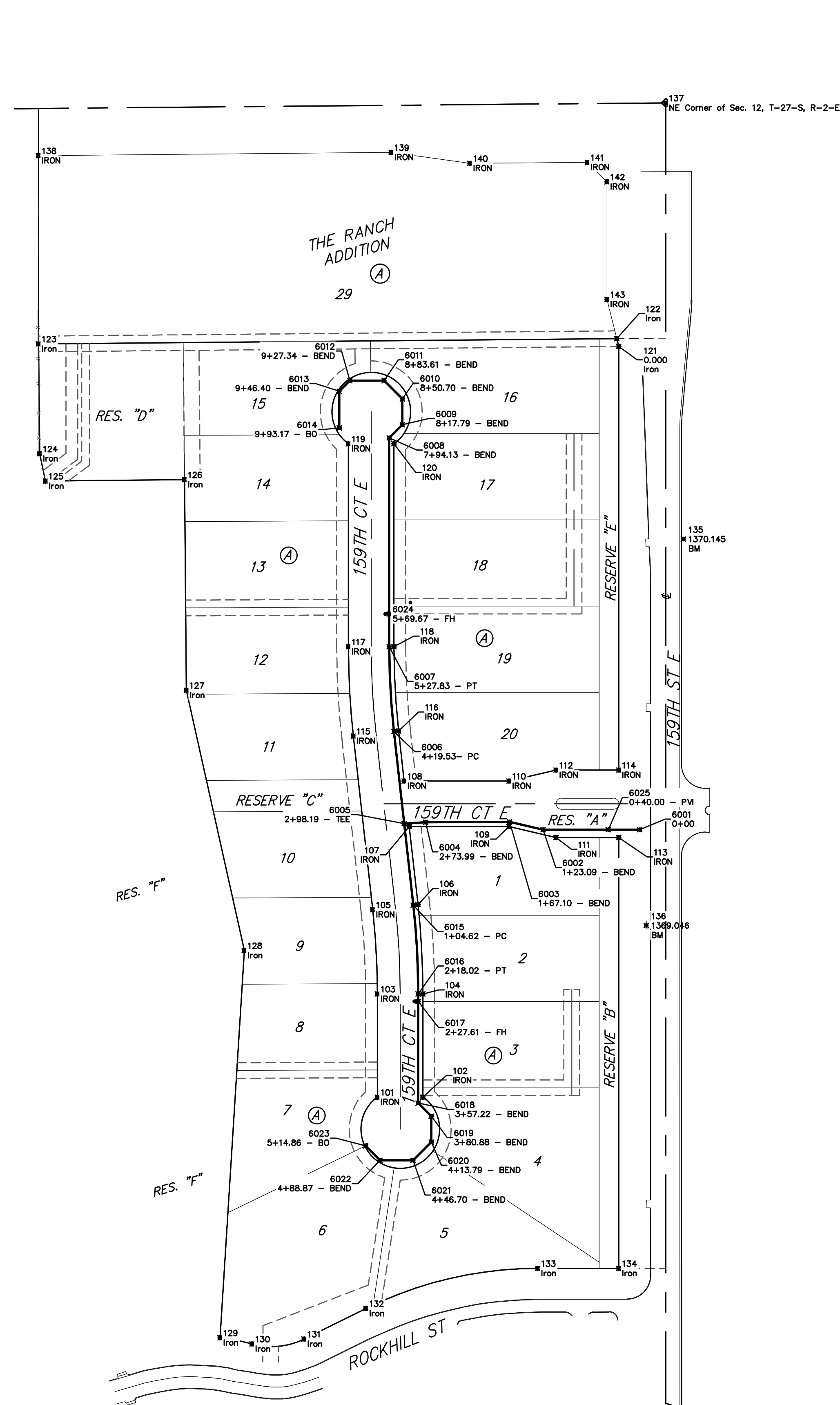
BENCHMARKS:

#1: "X" CUT CHISELED ON CURB INLET,
8.9' S. & 27.5' W. OF THE NW COR., LOT
22, BLOCK 1, QUAIL CROSSING ADDITION,
PHASE 2, 22.3' EAST OF @ N. 159TH ST. E.
ELEV. = 1370.15 (NAVD88)

#2: "X" CUT CHISELED ON CURB INLET,
13.2' S. & 60.1' E. OF THE NE COR., LOT
2, BLOCK A, THE RANCH 2ND ADDITION.
24.9' WEST OF @ N. 159TH ST. E.
ELEV. = 1369.05 (NAVD88)

CONTROL POINTS			
Point #	Northing	Easting	Description
101	3,732.40	9,632.23	IRON
102	3,732.40	9,690.23	IRON
103	3,864.06	9,632.23	IRON
104	3,864.06	9,690.23	IRON
105	3,971.47	9,626.27	IRON
106	3,977.89	9,683.92	IRON
107	4,077.46	9,672.83	IRON
108	4,135.46	9,666.38	IRON
109	4,077.46	9,800.00	IRON
110	4,135.46	9,800.00	IRON
111	4,063.46	9,860.00	IRON
112	4,149.46	9,860.00	IRON
113	4,063.46	9,940.00	IRON
114	4,149.46	9,940.00	IRON
115	4,192.79	9,601.64	IRON
116	4,199.21	9,659.28	IRON
117	4,306.62	9,595.32	IRON
118	4,306.62	9,653.32	IRON
119	4,565.37	9,595.32	IRON
120	4,565.37	9,653.32	IRON
121	4,689.45	9,940.00	Iron
122	4,699.43	9,937.50	Iron
123	4,692.74	9,200.00	Iron
124	4,552.74	9,201.50	Iron
125	4,517.81	9,208.90	Iron
126	4,519.63	9,386.21	Iron
127	4,251.14	9,388.64	Iron
128	3,919.54	9,462.46	Iron
129	3,425.76	9,431.53	Iron
130	3,417.90	9,472.28	Iron
131	3,424.13	9,538.74	Iron
132	3,463.07	9,617.65	Iron
133	3,514.19	9,836.73	Iron
134	3,514.19	9,940.00	Iron
135	4,443.85	10,022.29	BM
136	3,951.27	9,975.11	BM
137	5,000.00	10,000.00	NE Corner of Sec. 12, T-27-S, R-2-E
138	4,932.74	9,200.00	IRON
139	4,936.82	9,649.88	IRON
140	4,922.89	9,750.16	IRON
141	4,924.09	9,900.00	IRON
142	4,899.32	9,925.00	IRON
143	4,749.31	9,925.00	IRON

WTR POINTS			
Point #	Northing	Easting	Description
6001	4,073.46	9,966.64	0+00
6002	4,073.46	9,843.55	1+23.09 - BEND
6003	4,083.46	9,800.69	1+67.10 - BEND
6004	4,082.80	9,693.80	2+73.99 - BEND
6005	4,081.20	9,666.38	2+98.19 - TEE
6006	4,198.54	9,653.32	4+19.53- PC
6007	4,306.62	9,647.32	5+27.83 - PT
6008	4,572.92	9,647.32	7+94.13 - BEND
6009	4,589.65	9,664.05	8+17.79 - BEND
6010	4,622.56	9,664.05	8+50.70 - BEND
6011	4,645.83	9,640.78	8+83.61 - BEND
6012	4,645.83	9,597.05	9+27.34 - BEND
6013	4,632.35	9,583.57	9+46.40 - BEND
6014	4,585.58	9,583.57	9+93.17 - BO
6015	3,977.22	9,677.95	1+04.62 - PC
6016	3,864.06	9,684.23	2+18.02 - PT
6017	3,854.46	9,684.23	2+27.61 - FH
6018	3,724.85	9,684.23	3+57.22 - BEND
6019	3,708.12	9,700.96	3+80.88 - BEND
6020	3,675.21	9,700.96	4+13.79 - BEND
6021	3,651.94	9,677.69	4+46.70 - BEND
6022	3,651.94	9,635.51	4+88.87 - BEND
6023	3,670.32	9,617.14	5+14.86 - BO
6024	4,348.46	9,647.32	5+69.67 - FH
6025	4,073.46	9,926.64	0+40.00 - PVI



	The Ranch 2nd Addition	
	COORDINATES	
Water Distribution System		
<small>Baughman Company, P.A. 315 Ellis St. Wichita, KS 67211 P 316-262-7271 F 316-262-0149 ENGINEERING SURVEYING PLANNING LANDSCAPE ARCHITECTURE</small>		
PROJECT NUMBER 2019-015117	DESIGN AEG	DRAWN HW
REVISIONS:	APPROVED	DATE 10/07/19
	SCALE Noted	SHEET 13 OF 14