

GENERAL NOTES:

- The Contractor shall comply with all applicable safety regulations. All construction shall be completed following current City Standard Specifications and Special Provisions.
- Contractor will be required to provide notice to utility companies a minimum of seventy-two (72) hours prior to any excavation, as follows:

Kansas One-Call 687-2470

The Contractor must notify the following in case of an emergency:

AT&T	1-800-246-8464
Black Hills Energy	1-800-694-8989
City of Wichita Water & Sewer	1-316-219-8921
City of Wichita Stormwater	1-316-268-4090
City of Wichita Traffic	1-316-268-4034
Cox Communications	1-888-249-3530
Kansas Gas Service	1-888-482-4950
Westar Energy	1-800-544-4857

- Utility service lines, poles, etc. are to be adjusted as necessary by others prior to construction unless the plans specifically call for their adjustment by the Contractor or unless the plans specifically identify a utility to be adjusted by its owner during construction. Existing utilities and their location, as shown on the plans, represent the best information obtainable for design. The Contractor will be required to work around existing utilities within the right-of-way which do not conflict with proposed construction.

- Rubble from the removal of miscellaneous structures and excess excavation which is to be wasted shall be disposed of on sites to be provided by the Contractor. These sites shall be approved by the Engineer as to suitability, appearance and site location. Locations, in the opinion of the Engineer, that will leave an unsightly appearance will not be approved. All disposal sites must be approved by the Kansas Department of Health and Environment. Material either stockpiled or disposed of in a flood plain will require a Kansas State Board of Agriculture permit. Any material dumped in waters of the United States or wetlands is subject to U.S. Corps. of Engineers permitting regulations. Any material buried or stockpiled beyond approved construction limits will require additional archaeological investigations unless buried in a previously approved borrow location.

- Trees and shrubs in public right-of-way which are in direct conflict with proposed new construction shall be removed by the Contractor with the City Engineer's approval. Trees and shrubs which are not in direct conflict with proposed new construction shall be saved and protected from damage.

- The Contractor shall give all property owners and/or tenants of developed property abutting the construction of this project a minimum of ten (10) days notice prior to start of construction.

- The Contractor shall be responsible for preserving property irons. The Contractor will be required to re-establish any property irons which are damaged or destroyed by his construction operations. Such irons shall be re-established by a licensed land surveyor in accordance with state laws.

- All elevations shown are NAVD 88.

- All areas disturbed during construction that will not be under proposed pavement shall be restored to match existing conditions.

- All stubs and capped pipes shall be located with green plastic tape in the same manner as risers.

- Connecting to Existing Manholes:
Prior to laying sewer lines using existing stubs in existing manholes, the Contractor shall expose and verify the elevation, grade and alignment of existing stubs and notify the Engineer of any deviation from the plans. Where the stub is unusable due to elevation grade or alignment, the Contractor shall remove the stub and plug the hole, and reshape the existing manhole invert to provide smooth flow. Where connection to an existing manhole that does not have an existing stub, the Contractor shall core cut into existing manhole wall to make connection using approved water stop gasket, and reshape the existing manhole invert to provide smooth flow. The cost of connect to existing manholes is incidental to the project.

- Contractor shall limit the extent of trench open overnight and weekends to less than 50 feet.

- Contractor shall provide positive drainage away from all manhole covers.

- The Contractor shall prevent any construction debris from entering the existing sanitary sewer during construction.

- The Contractor shall protect from damage and support existing utilities through construction as approved by the utility owner and the Engineer at the contractor's expense.

- Contractor shall grade around exposed manholes at a 1:1 slope. Manholes set lower than existing grade shall have a 9" berm constructed around manhole to prevent infiltration into sanitary sewer system. Cost of dirt, labor, equipment, etc. to be incidental to cost of manhole.

- All areas disturbed during construction shall be seeded at 300 lbs./acre with Rye Grass immediately following construction in that area. Contractor shall prepare ground per City Specifications.

- All existing and proposed erosion control measures including silt fencing, erosion control mat, straw bales, inlet barriers, and const. entrance shall be maintained throughout construction by the contractor and until project is accepted by the City of Wichita. The on-site engineer shall complete weekly reports on the status of erosion control measures. The contractor shall be required to comply with maintenance and/or replacement of erosion control measures as determined by the on-site engineer until project is accepted by City of Wichita. Maintenance and/or replacement of erosion control measures to be paid by L.S. bid item "Maintain Existing BMPs".

- The developer for this project is ARC Investors, LLC.

Benchmarks

BM #1: "□" Cut in top of curb on north side of Athenian, near the SE corner of Lot 13, Block 1, Valencia Addition.
Elev. = 1332.11 NAVD88

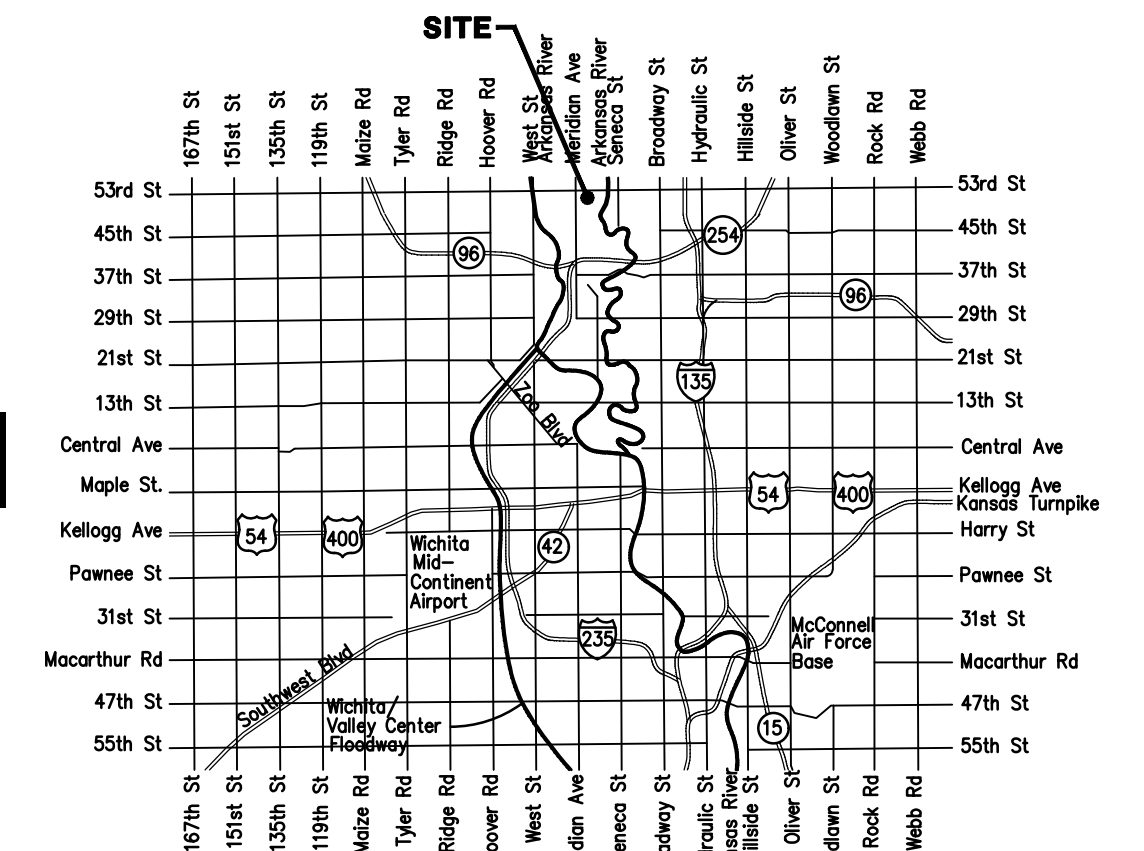
BM #2: Cross cut in sidewalk on north side of Harborlight St., near Lot 23, Block 1, Harbor Isle 2nd Addition.
Elev. = 1330.40 NAVD88

Lateral 8, Main 15, Sanitary Sewer #23 SANITARY SEWER IMPROVEMENTS to serve

VALENCIA ADDITION - PH. II & III

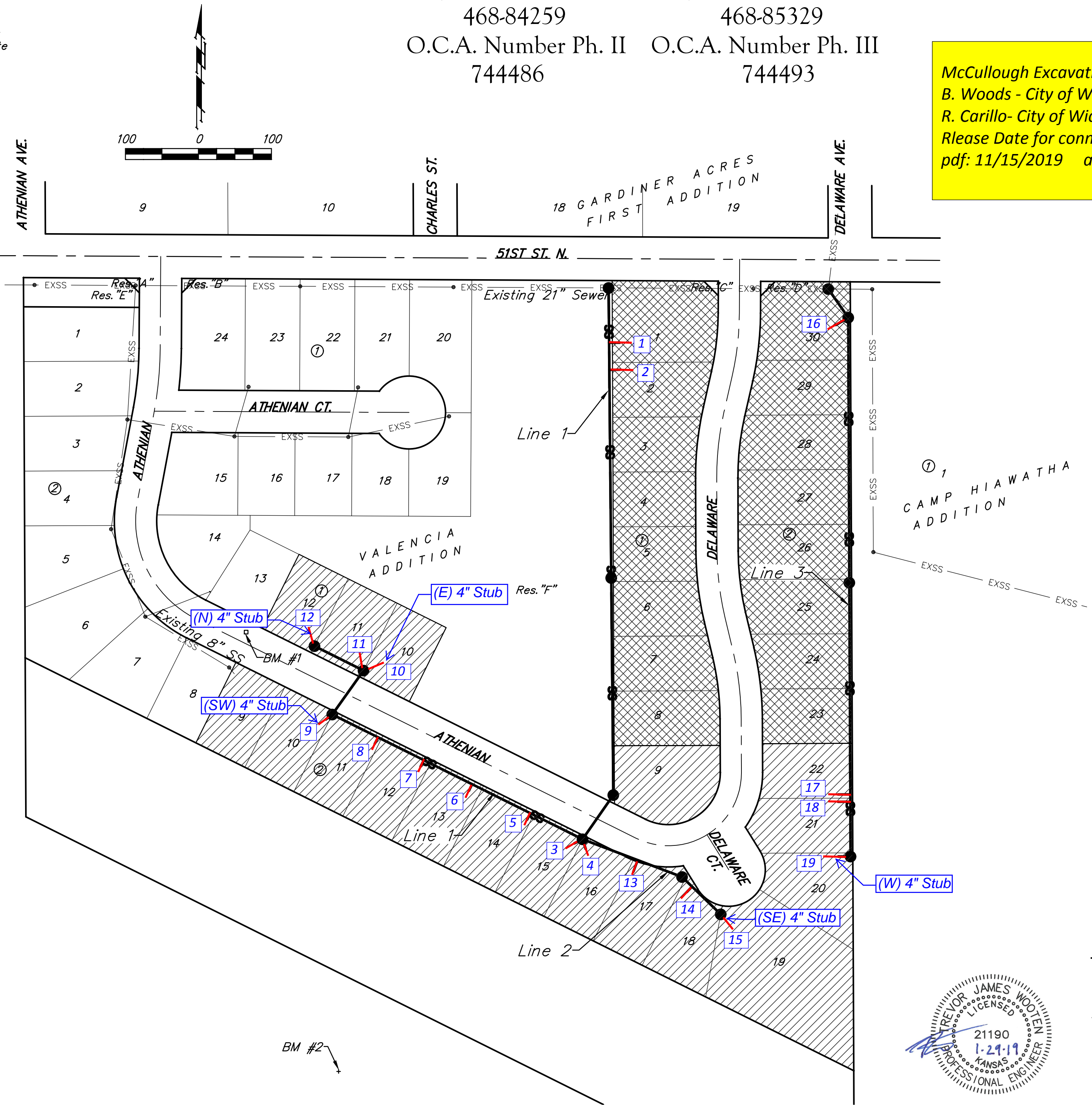
CITY OF WICHITA, KANSAS

Gary Janzen, P.E. City Engineer
Project Number Ph. II 468-84259 Project Number Ph. III 468-85329
O.C.A. Number Ph. II 744486 O.C.A. Number Ph. III 744493



Vicinity Map

McCullough Excavation - Contractor
B. Woods - City of Wichita, Field Project Engineer
R. Carillo - City of Wichita, Inspector
Release Date for connection purposes only: 6/28/2019
pdf: 11/15/2019 apr

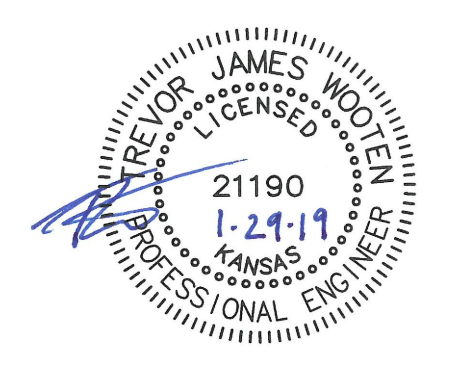


Sheet Index

Title Sheet	1
Line 1	2-3
Line 2	4
Line 3	5
Erosion Control Plan	6
Precast SS Manhole Detail	7
Manhole Frame & Cover Detail	8
Vertical Riser Assembly Detail	9
Erosion Control BMP Details	10-14
Coordinate Sheet	15
Copy of Plat	16

Benefit District Ph. II

Benefit District Ph. III



December 2018

Baughman Company, P.A. 315 Ellis St. Wichita, KS 67211 P 316-262-7271 F 316-262-0149
ENGINEERING | SURVEYING | PLANNING | LANDSCAPE ARCHITECTURE

E:\Projects\Valencia Addition\Engineering\Phase 2\SS\SS.dwg

BENCHMARKS:

BM #1: "□" Cut in top of curb on north side of Athenian, near the SE corner of Lot 13, Block 1, Valencia Addition.
Elev. = 1332.11 NAVD88

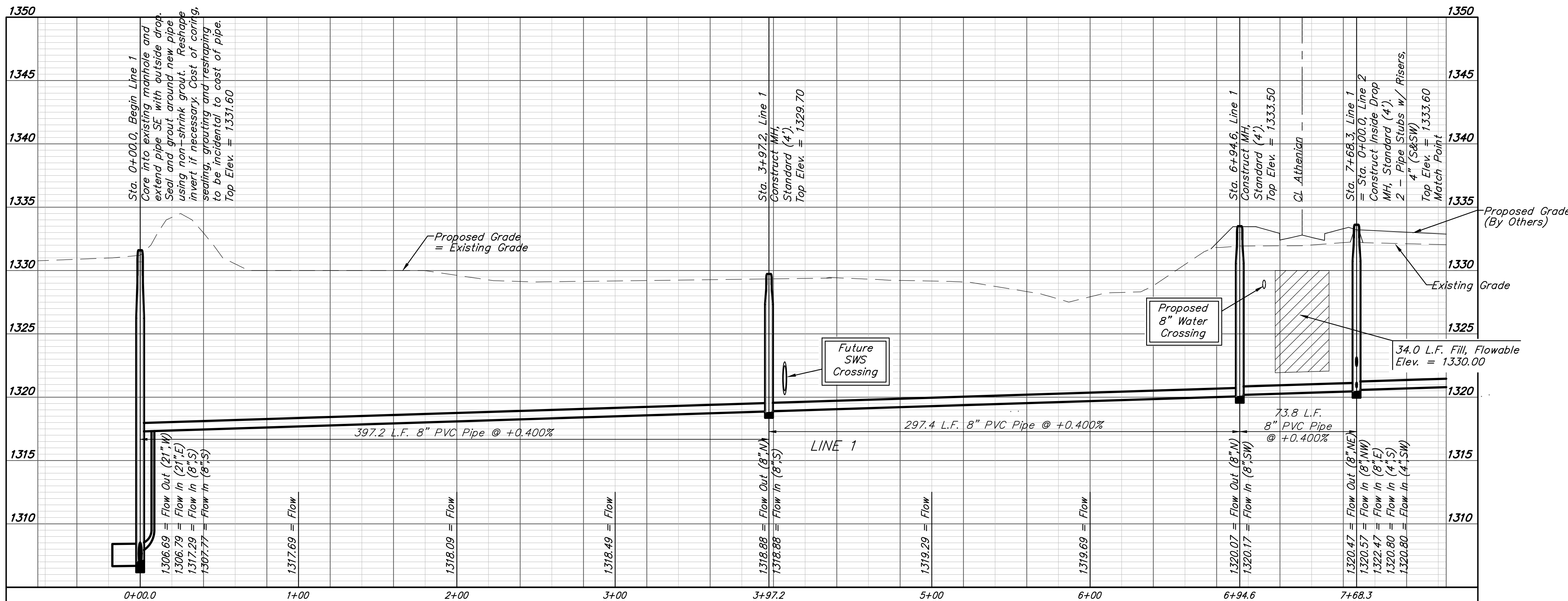
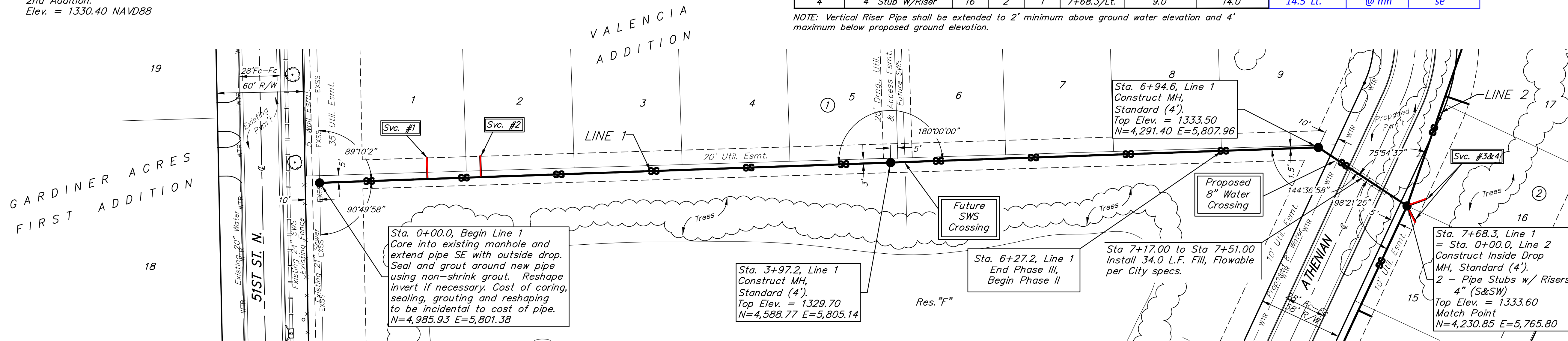
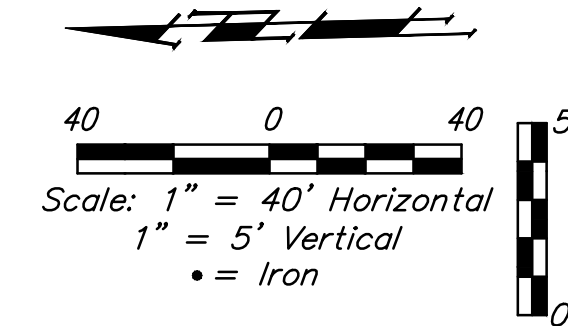
BM #2: Cross cut in sidewalk on north side of Harborlight St., near Lot 23, Block 1, Harbor Isle 2nd Addition.
Elev. = 1330.40 NAVD88

Trees to be removed by the Contractor only as necessary for sewer construction and with approval of the Engineer. Cost of tree removal to be included in bid item "Site Clearing"

SEWER SERVICE TABLE

NUMBER	TYPE	LOCATION				FOR INFORMATION ONLY		Distance from		
		LOT NO.	BLOCK NO.	LINE NO.	STATION \ DIRECTION	APPROXIMATE LENGTH 4" PIPE VERTICAL	HORIZONTAL	Main to Riser (Lt./Rt.)	Upstream MH	Downstream MH
1	8" X 4" Tee W/Riser	1	1	1	0+75.0/Lt.	8.5'	14.8'	15' Lt.	322'	75'
2	8" X 4" Tee W/Riser	2	1	1	1+12.2/Lt.	8.5'	14.4'	14.5' Lt.	281'	112'
3	4" Stub W/Riser	15	2	1	7+68.3/Lt.	9.0'	12.6'	12' Lt.	@ mh	sw
4	4" Stub W/Riser	16	2	1	7+68.3/Lt.	9.0'	14.0'	14.5' Lt.	@ mh	se

NOTE: Vertical Riser Pipe shall be extended to 2' minimum above ground water elevation and 4' maximum below proposed ground elevation.



Contractor shall verify location and depth of existing manhole prior to construction and notify Engineer of any discrepancy.

VALENCIA ADDITION - PH. II & III
LINE 1
SANITARY SEWER IMPROVEMENTS

Baughman Company, P.A.
1145 W. 48th St., Suite 100, Overland Park, KS 66204
913.661.1100
www.baughmanpa.com

REGISTERED PROFESSIONAL ENGINEER
STATE OF KANSAS
No. 21190
1-29-19

2 OF 16

BENCHMARKS:
 BM #1: "□" Cut in top of curb on north side of Athenian, near the SE corner of Lot 13, Block 1, Valencia Addition.
 Elev. = 1332.11 NAVD88

BM #2: Cross cut in sidewalk on north side of Harborlight St., near Lot 23, Block 1, Harbor Isle 2nd Addition.
 Elev. = 1330.40 NAVD88

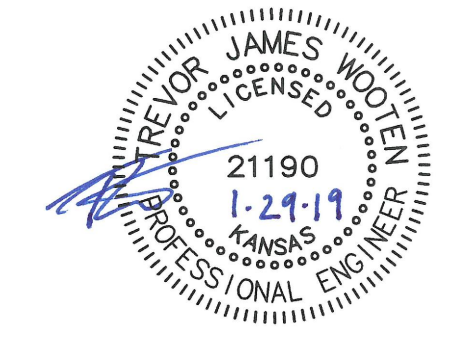
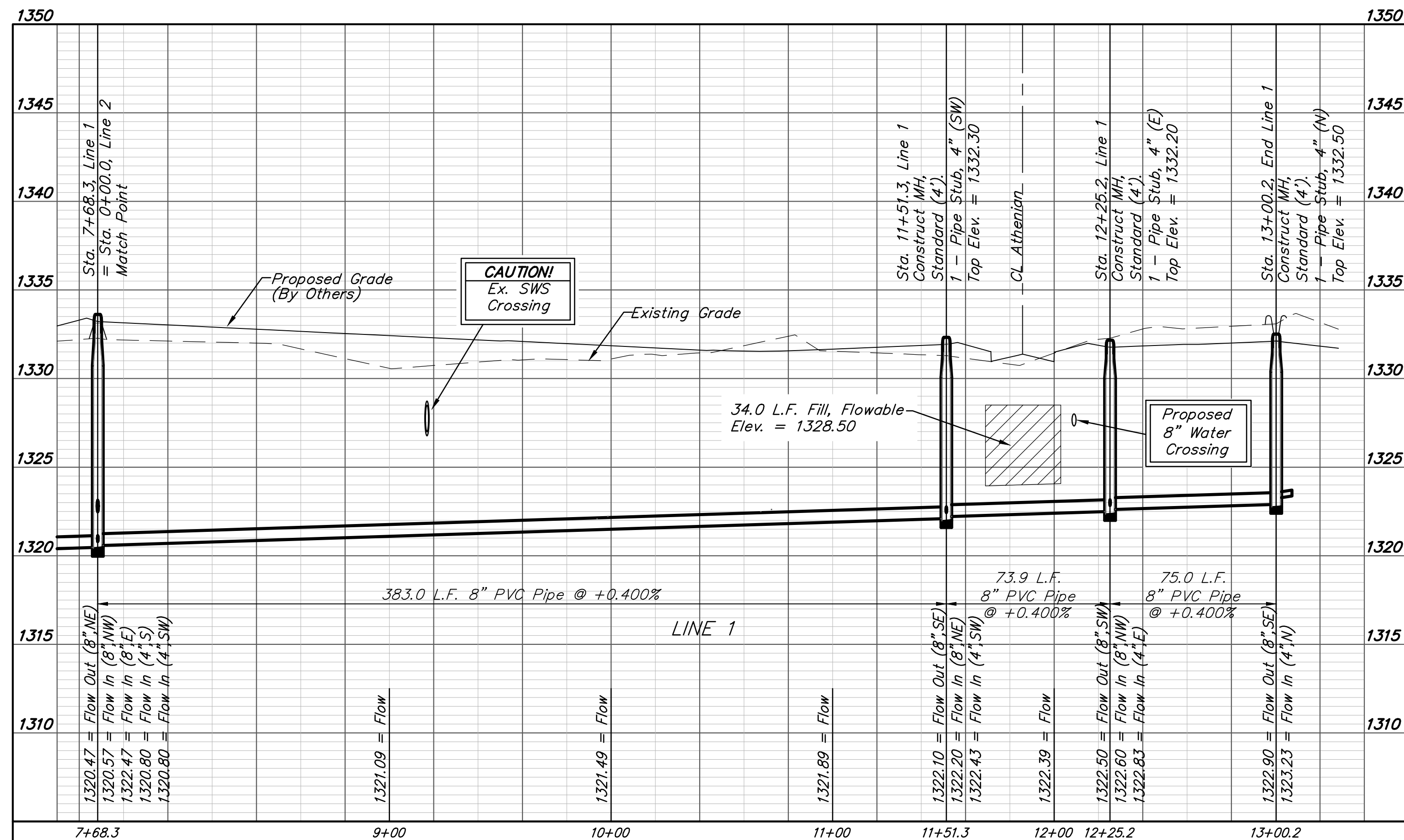
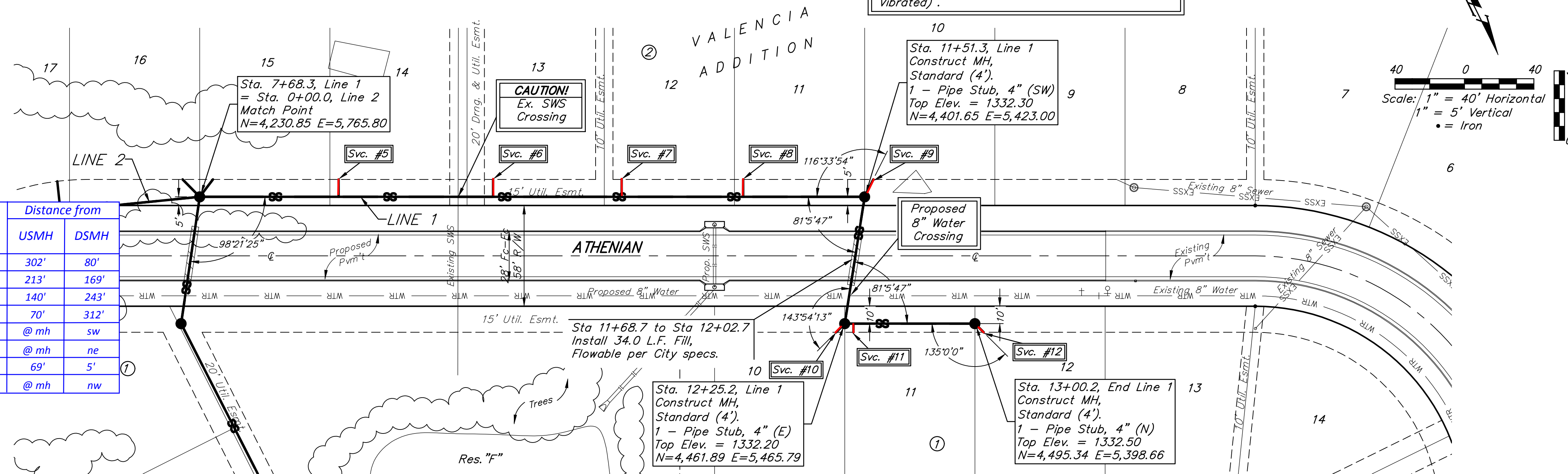
Trees to be removed by the Contractor only as necessary for sewer construction and with approval of the Engineer. Cost of tree removal to be included in bid item "Site Clearing"

All trench and manhole excavation areas from Sta. 7+68.3 to Sta. 11+51.3 and Sta. 12+25.2 to Sta. 13+00.2, Line 1 shall be backfilled with sand. The sand backfill shall be within two feet of existing grade and shall be water-jetted and vibrated during backfilling. All costs shall be paid for as L.F. "Fill, Sand (Flushed & Vibrated)".

SEWER SERVICE TABLE

NUMBER	TYPE	LOCATION			FOR INFORMATION ONLY		Distance from Main to Riser (Lt./Rt.)	Distance from		
		LOT NO.	BLOCK NO.	LINE NO.	APPROXIMATE LENGTH 4" PIPE	VERTICAL		HORIZONTAL	USMH	DSMH
5	8" X 4" Tee W/Riser	14	2	1	8+48.3/Lt.	8.0'	10.0'	10' Lt.	302'	80'
6	8" X 4" Tee W/Riser	13	2	1	9+37.3/Lt.	7.0'	10.0'	10' Lt.	213'	169'
7	8" X 4" Tee W/Riser	12	2	1	10+11.3/Lt.	6.5'	10.0'	10' Lt.	140'	243'
8	8" X 4" Tee W/Riser	11	2	1	10+81.3/Lt.	6.0'	10.0'	10' Lt.	70'	312'
9	4" Stub	10	2	1	11+51.3/Lt.	6.0'	11.2'	11' Lt.	@ mh	sw
10	4" Stub	10	1	1	12+25.2/Rt.	5.5'	7.0'	7' Rt.	@ mh	ne
11	8" X 4" Tee W/Riser	11	1	1	12+30.2/Rt.	5.5'	5.0'	5' Rt.	69'	5'
12	4" Stub	12	1	1	13+00.2/Rt.	5.0'	7.0'	7' Rt.	@ mh	nw

NOTE: Vertical Riser Pipe shall be extended to 2' minimum above ground water elevation and 4' maximum below proposed ground elevation.



BENCHMARKS:

BM #1: "□" Cut in top of curb on north side of Athenian, near the SE corner of Lot 13, Block 1, Valencia Addition.
Elev. = 1332.11 NAVD88

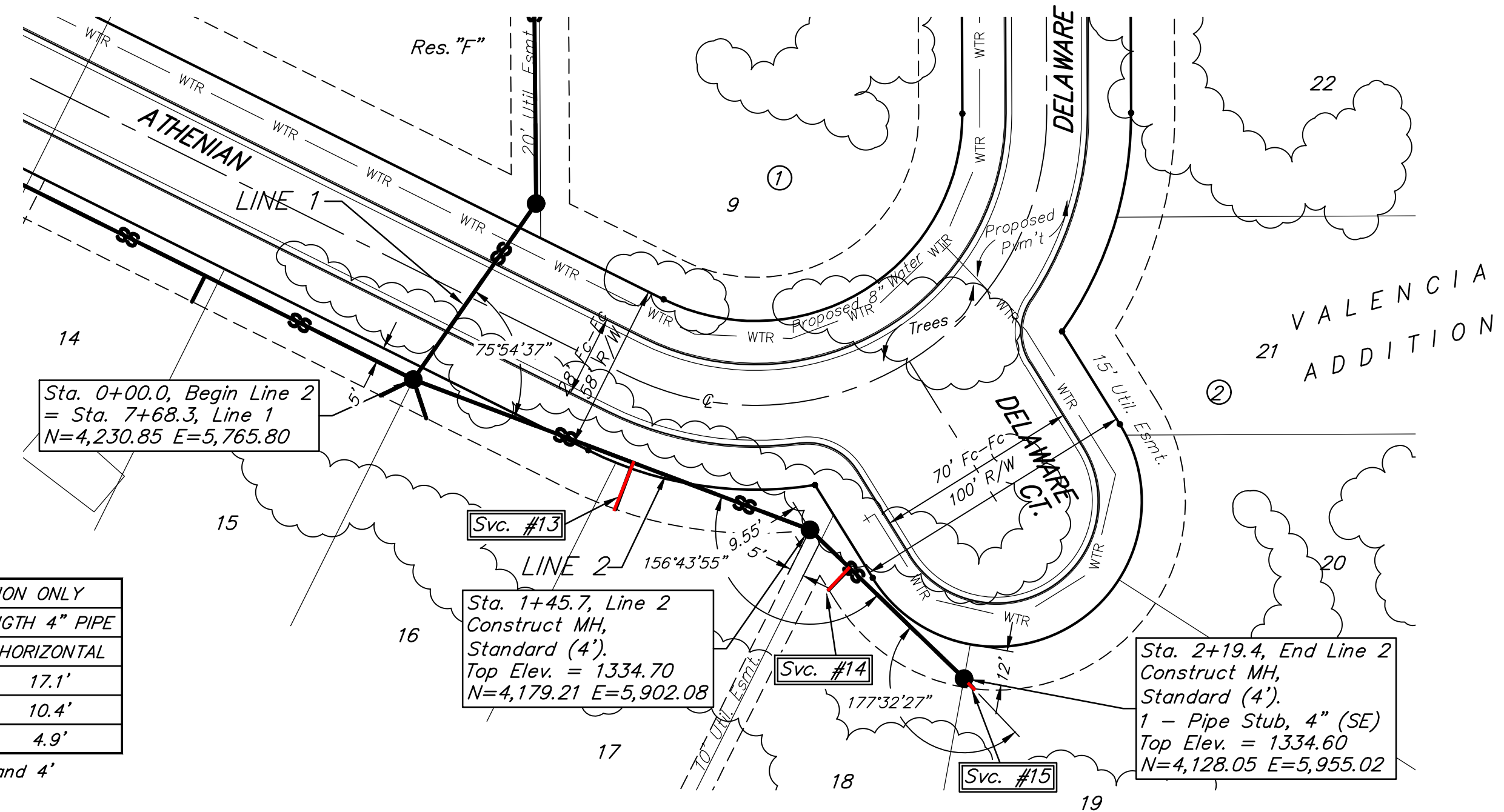
BM #2: Cross cut in sidewalk on north side of Harborlight St., near Lot 23, Block 1, Harbor Isle 2nd Addition.
Elev. = 1330.40 NAVD88

All trench and manhole excavation areas from Sta. 0+00 to Sta. 2+19.4, Line 2 shall be backfilled with sand. The sand backfill shall be within two feet of existing grade and shall be water-jetted and vibrated during backfilling. All costs shall be paid for as L.F. "Fill, Sand (Flushed & Vibrated)".

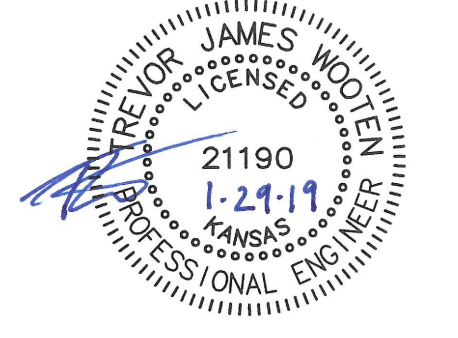
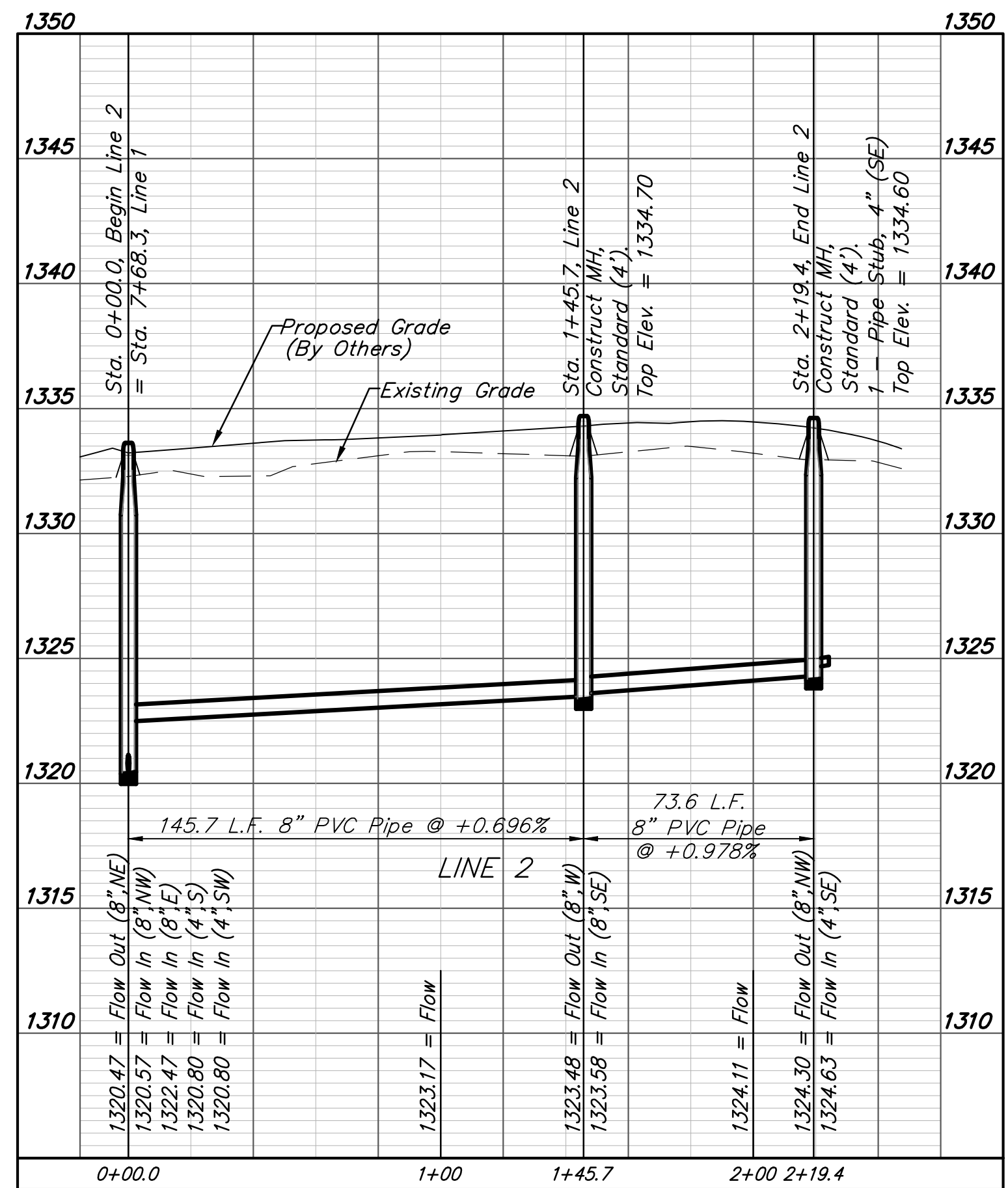
SEWER SERVICE TABLE

Distance from Main to Riser (Lt./Rt.)	Distance from		NUMBER	TYPE	LOCATION			FOR INFORMATION ONLY		
	Upstream MH	Downstream MH			LOT NO.	BLOCK NO.	LINE NO.	STATION DIRECTION	APPROXIMATE LENGTH 4" PIPE VERTICAL	HORIZONTAL
17' Rt.	65'	80'	13	8" X 4" Tee W/Riser	17	2	2	0+80.7/Rt.	8.0'	17.1'
10' Rt.	55'	18'	14	8" X 4" Tee W/Riser	18	2	2	1+64.7/Rt.	7.0'	10.4'
5' Rt.	@ mh	se	15	4" Stub	19	2	2	2+19.4/Rt.	6.0'	4.9'

NOTE: Vertical Riser Pipe shall be extended to 2' minimum above ground water elevation and 4' maximum below proposed ground elevation.



Trees to be removed by the Contractor only as necessary for sewer construction and with approval of the Engineer. Cost of tree removal to be included in bid item "Site Clearing"



BENCHMARKS:

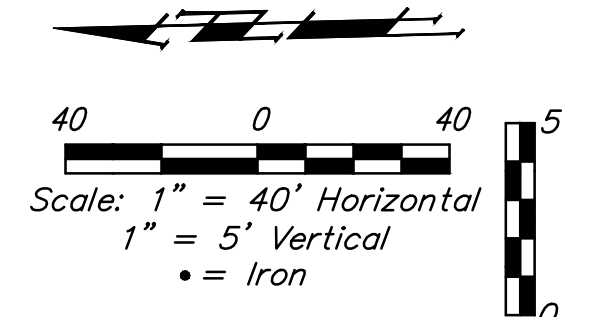
BM #1: "□" Cut in top of curb on north side of Athenian, near the SE corner of Lot 13, Block 1, Valencia Addition.
Elev. = 1332.11 NAVD88

BM #2: Cross cut in sidewalk on north side of Harborlight St., near Lot 23, Block 1, Harbor Isle 2nd Addition.
Elev. = 1330.40 NAVD88

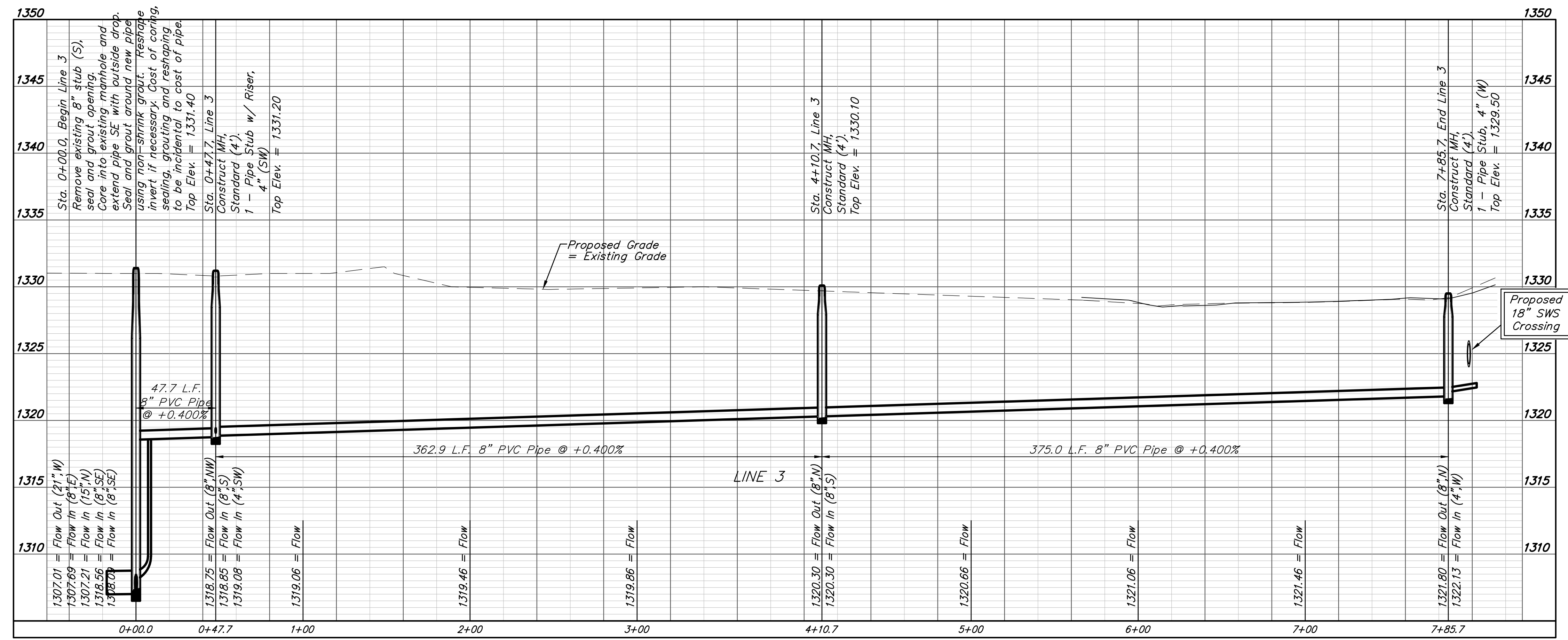
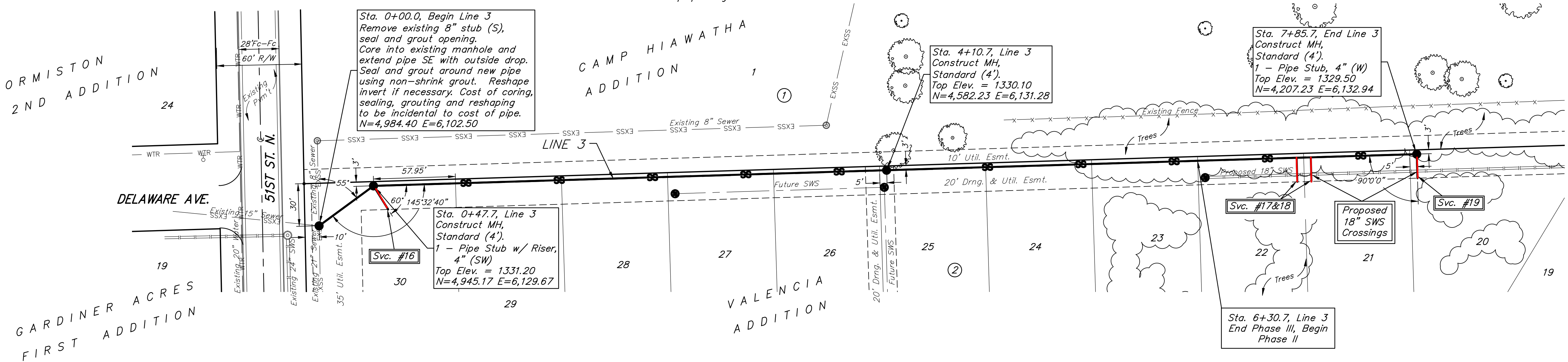
SEWER SERVICE TABLE

Distance from Main to Riser (Lt./Rt.)	Distance from		NUMBER	TYPE	LOCATION			FOR INFORMATION ONLY		
	Upstream MH	Downstream MH			LOT NO.	BLOCK NO.	LINE NO.	STATION \ DIRECTION	APPROXIMATE LENGTH 4" PIPE	VERTICAL
20' Rt.	@ mh	sw	16	4" Stub W/Riser	30	2	3	0+47.7/Rt.	8.5'	19.6'
17' Rt.	85'	290'	17	8" X 4" Tee W/Riser	22	2	3	7+00.7/Rt.	3.5'	17.0'
17' Rt.	75'	300'	18	8" X 4" Tee W/Riser	21	2	3	7+10.7/Rt.	3.5'	17.0'
17' Rt.	@ mh	w	19	4" Stub	20	2	3	7+85.7/Rt.	3.5'	17.0'

NOTE: Vertical Riser Pipe shall be extended to 2' minimum above ground water elevation and 4' maximum below proposed ground elevation.



Trees to be removed by the Contractor only as necessary for sewer construction and with approval of the Engineer. Cost of tree removal to be included in bid item "Site Clearing"



Contractor shall verify location and depth of existing manhole prior to construction and notify Engineer of any discrepancy.

Baughman Company, P.A.
Professional Engineer
1-24-19

VALENCIA ADDITION - PH. II & III
LINE 3
SANITARY SEWER IMPROVEMENTS

21190
1-24-19
JAMES WOOTEN
PROFESSIONAL ENGINEER