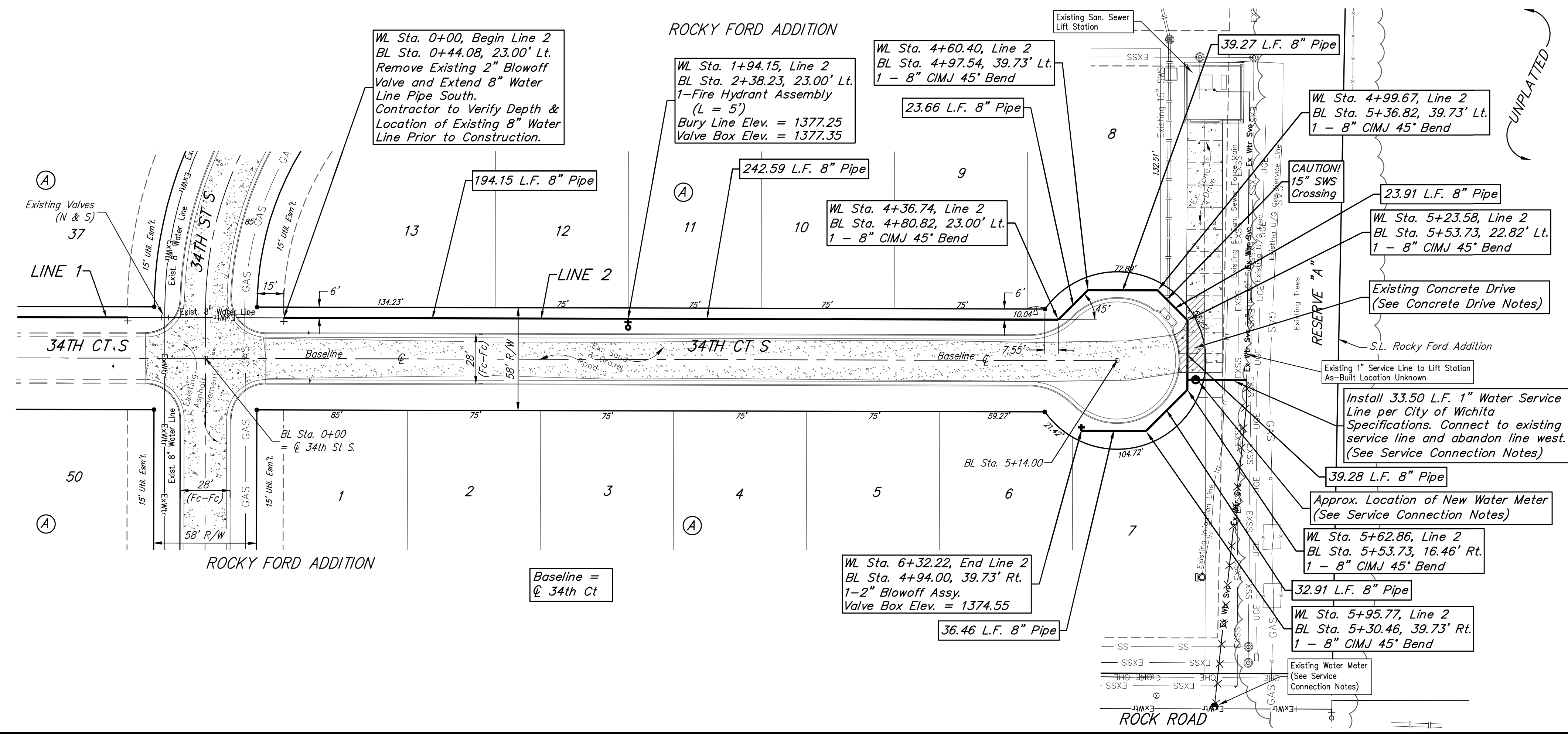
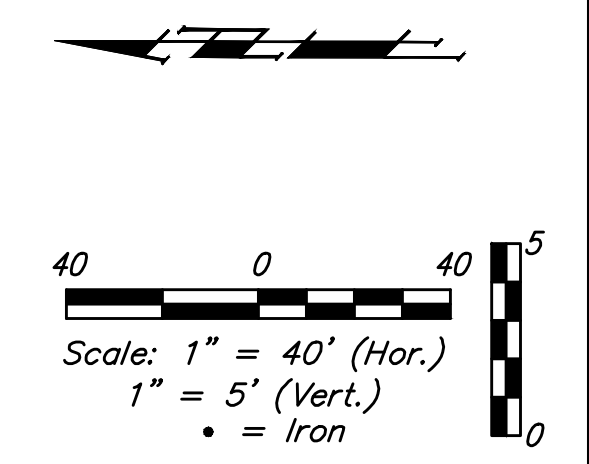


BENCHMARKS:
BM #1: "□" on Fence Footing under warning US Air Force Installation Sign West of Rock Road, 400' N. of W 1/2 Cor. Elev. = 1377.45 NAVD88
BM #2: Cross cut in top of curb West end of southwest curb return, 34th & 34th Ct. (Lots 1-13, Block A) Elev. = 1379.36 NAVD88
BM #3: Cross cut in top of curb North end of north curb return, 34th & 34th Ct. (Lots 22-36, Block A) Elev. = 1377.16 NAVD88

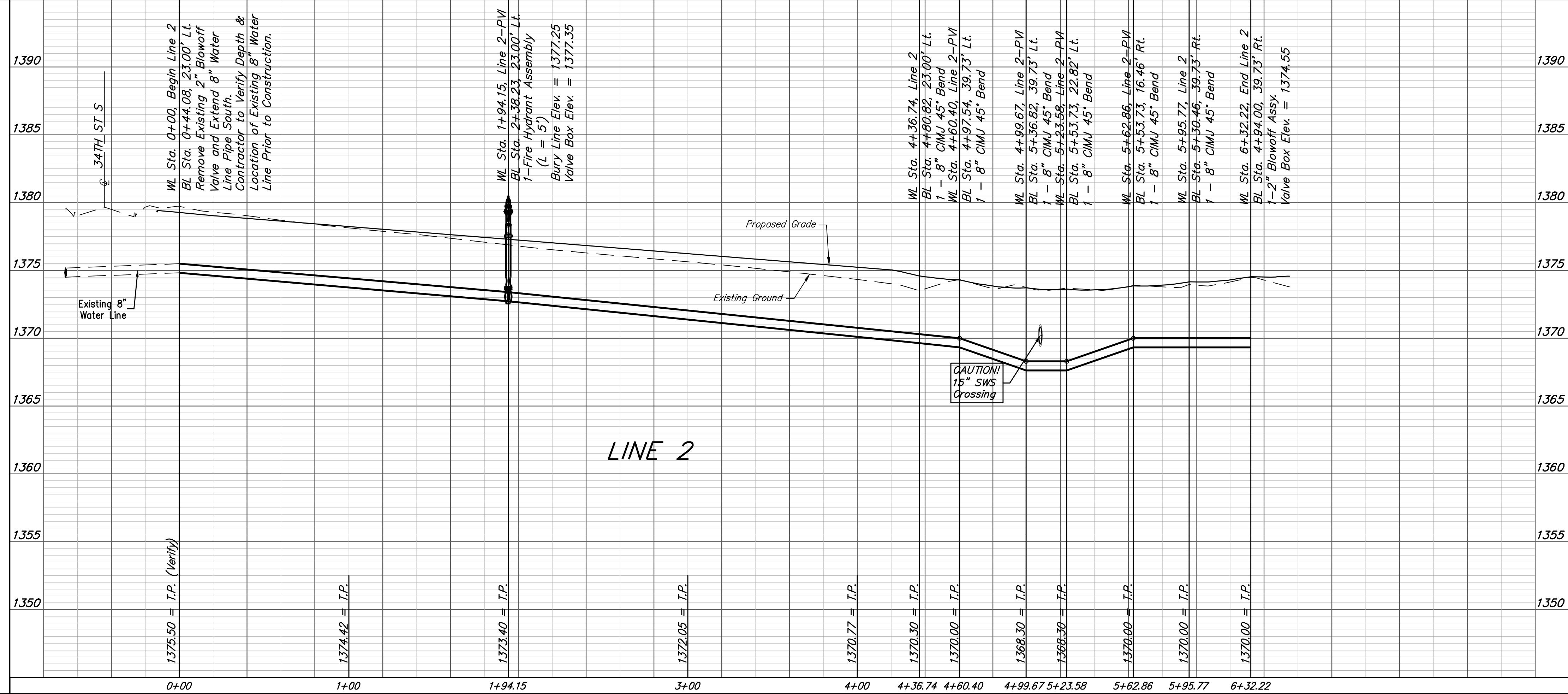


CONCRETE DRIVE NOTES:
 Remove 62 SY existing concrete drive pavement to the nearest joint for water line construction. Contractor to compact trench under drive location and install 6" of gravel/rock where drive pavement is removed for temporary access to the lift station. The concrete drive will be replaced with the paving project. Contractor may leave concrete drive in place and directional drill under the existing drive using restrained joint PVC pipe. All costs for drive removal, temporary rock/gravel access and compaction of water line trench is to be incidental to bid item, "Site Clearing."



SERVICE CONNECTION NOTES:

- Remove existing water meter, turn off and cap corp stop valve. Abandon water service line in place.
- Contractor may re-use water meter for new connection to Line 2 as shown. Connect to existing service line and abandon line west. (See Service Connection Notes)
- Contractor has the option to install new 1" service line from the new meter location and connect to existing 1" water service line near lift station.
- City of Wichita to tap existing water main for new service and install 1" service line from tap to meter.



Baughman Rocky Ford Addition - Phase II
LINE 2
 Water Distribution System

Baughman Company, P.A. 315 Ellis St. Wichita, KS 67211 P 316-262-7271 F 316-262-0149
 ENGINEERING | SURVEYING | PLANNING | LANDSCAPE ARCHITECTURE

PROJECT NUMBER: 448-90812 DESIGN: AEG DRAWN: JAK
 APPROVED: DATE: 10/23/19
 REVISIONS: SCALE: Noted SHEET: 6 OF 14

C:\Projects\Rocky Ford Addition_1606P207\Engineering\Phase 2\Wtr 1906E297\WTR PLANS.dwg