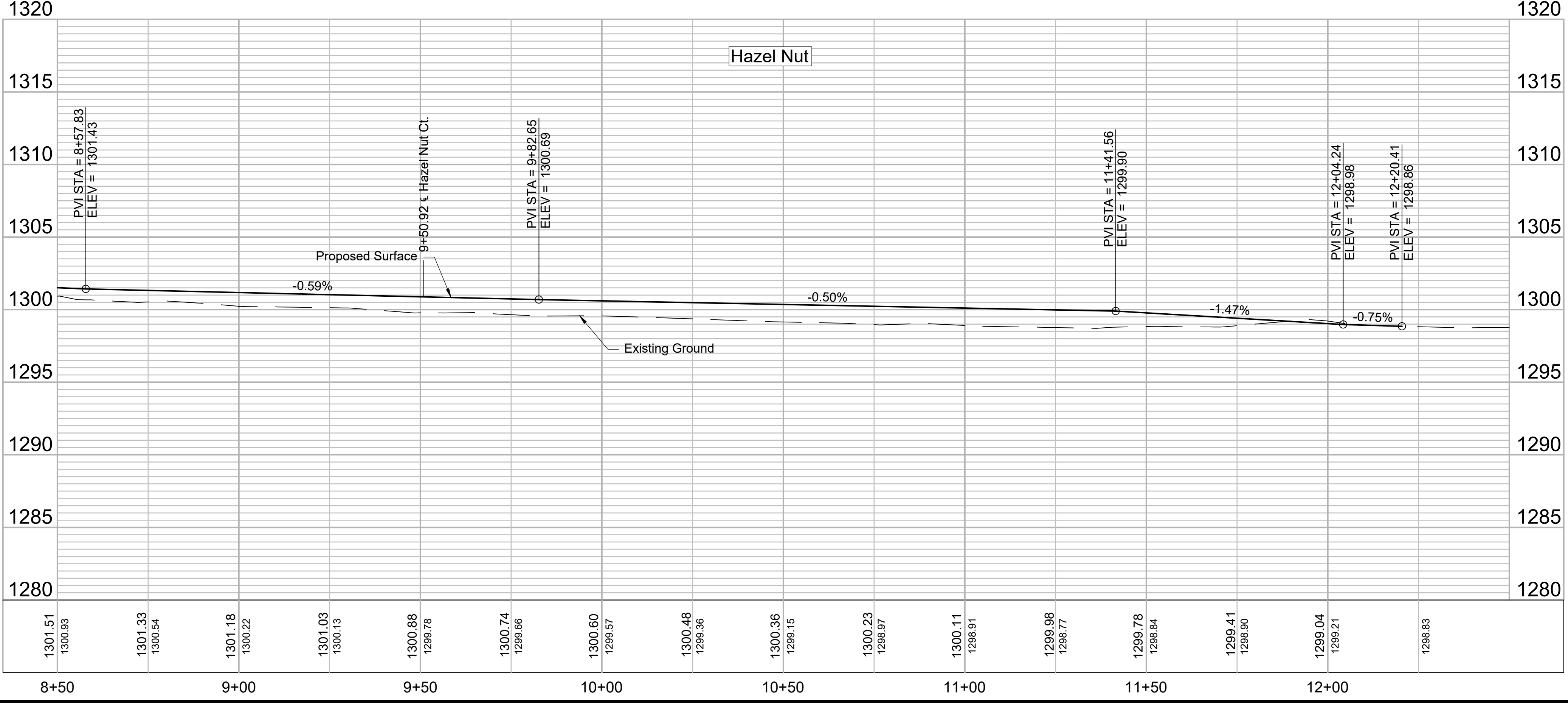
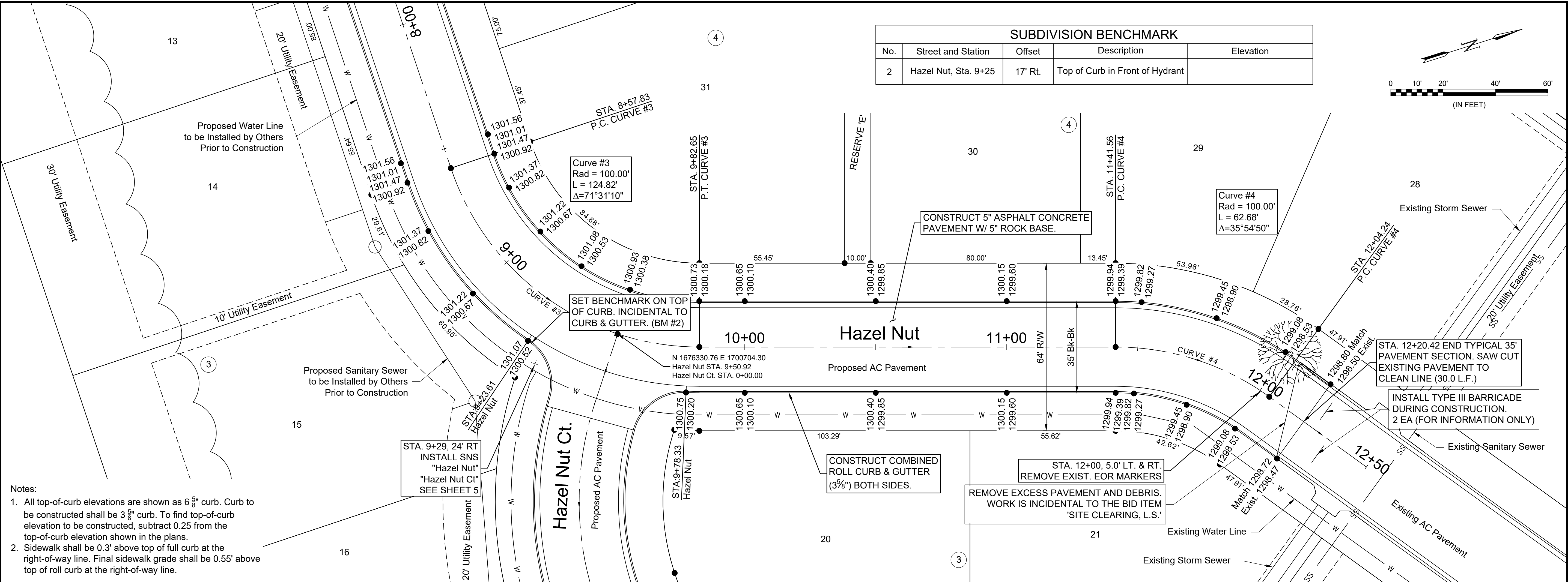
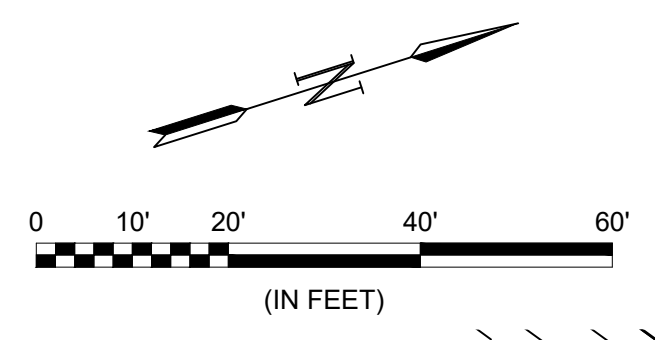




© 2019 GARVER, LLC  
 THIS DOCUMENT, ALONG WITH THE IDEAS AND DESIGNS CONVEYED HEREIN, SHALL BE CONSIDERED INSTRUMENTS OF PROFESSIONAL SERVICE AND ARE PROPERTY OF GARVER, LLC. ANY USE, REPRODUCTION, OR DISTRIBUTION OF THIS DOCUMENT, ALONG WITH THE IDEAS AND DESIGN CONTAINED HEREIN, IS PROHIBITED UNLESS AUTHORIZED IN WRITING BY GARVER, LLC OR EXPLICITLY ALLOWED IN THE GOVERNING PROFESSIONAL SERVICES AGREEMENT FOR THIS WORK.

SUBDIVISION BENCHMARK				
No.	Street and Station	Offset	Description	Elevation
2	Hazel Nut, Sta. 9+25	17' Rt.	Top of Curb in Front of Hydrant	



REV.	DATE	DESCRIPTION	BY



CITY OF WICHITA  
 WICHITA, KANSAS  
 PAVING & DRAINAGE  
 WHISPERING LAKES  
 ADDITION, PHASE 5

Hazel Nut

JOB NO.: 19T41011  
 DATE: OCT 19  
 DESIGNED BY: KWL  
 DRAWN BY: CDJ

BAR IS ONE INCH ON ORIGINAL DRAWING  
 IF NOT ONE INCH ON THIS SHEET, ADJUST SCALES ACCORDINGLY.

DRAWING NUMBER  
 -----

SHEET NUMBER **8** OF **24**

File: L:\2019\19T41011 - Whispering Lakes Phase 5\Drawings\C3D\Paving\08 - Hazel Nut.dwg Last Save: 10/28/2019 9:26 AM Last saved by: CDJurey  
 Last plotted by: Jurey, Caleb D. Plot Style: --- Plot Scale: 1:2.5849 Plot Date: 10/28/2019 10:46 AM Plotter used: None