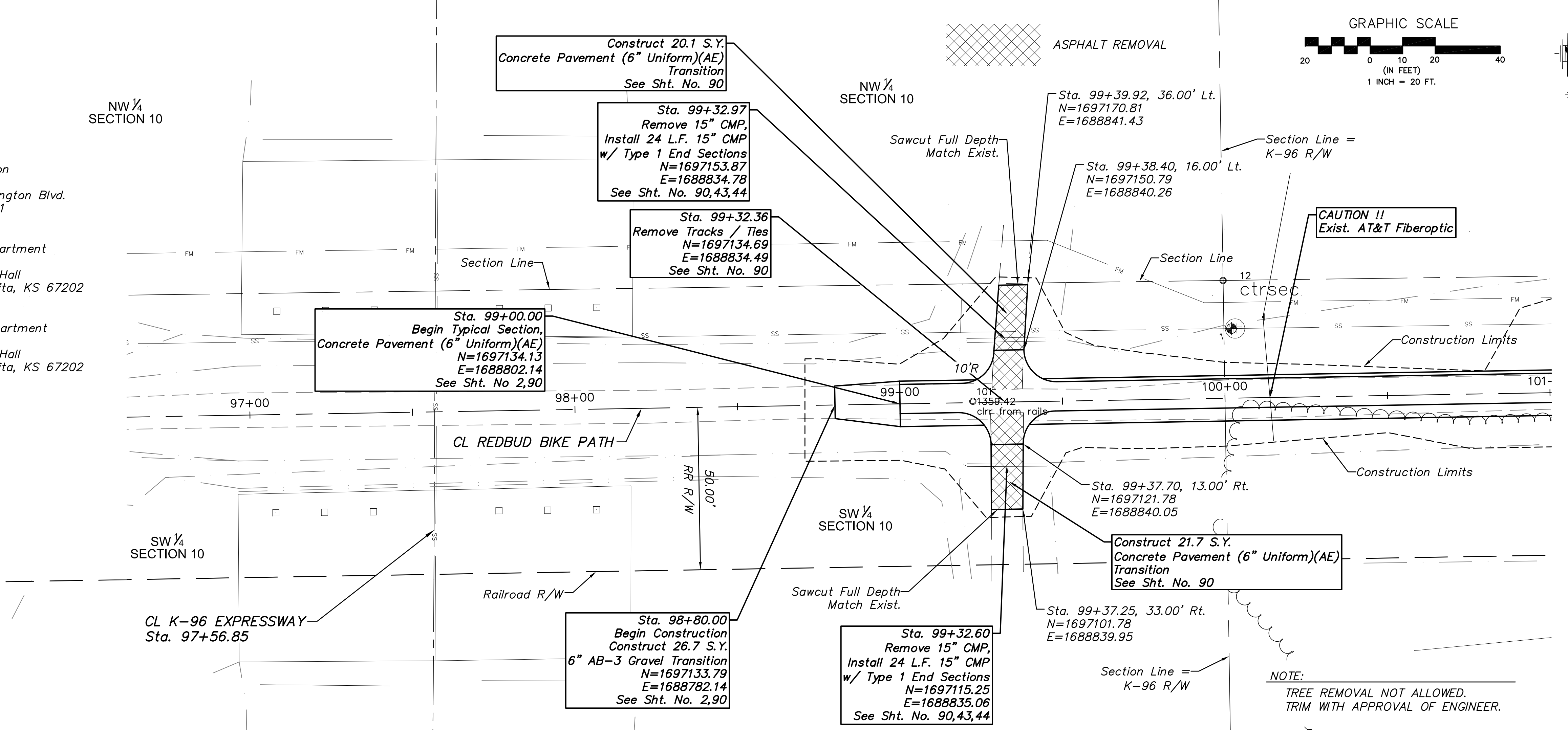
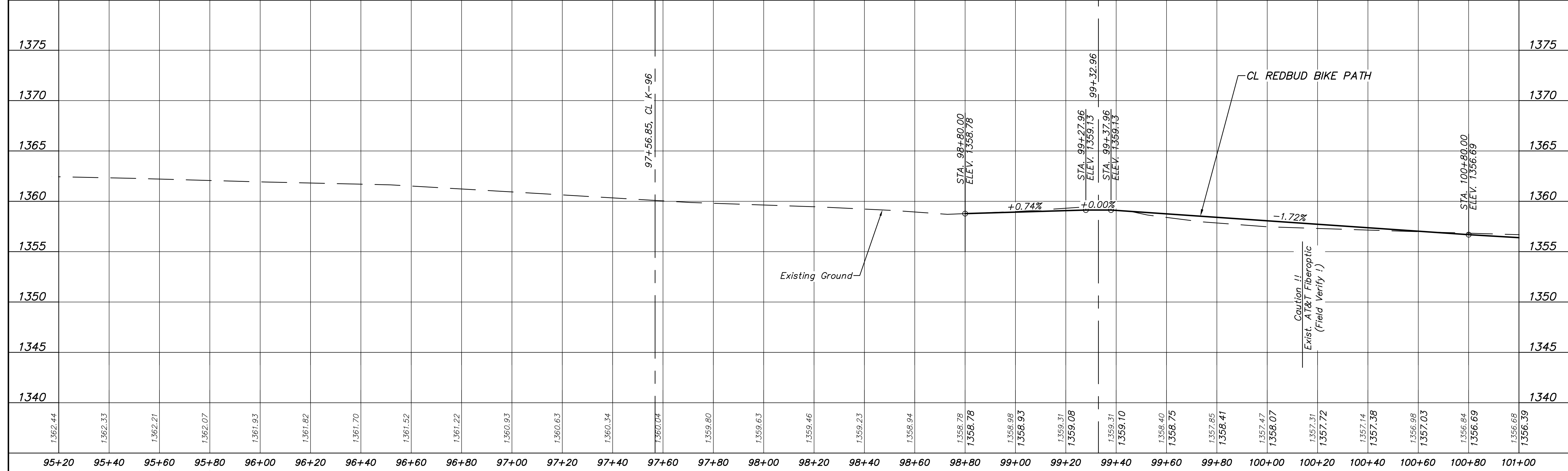


- UTILITIES**
- AT&T
Jason Edwards
154 N. Broadway, Rm 210
Wichita, KS 67202
(316)268-2008
 - Cox Communication
James Walburn
901 George Washington Blvd.
Wichita, KS 67211
(316)260-7491
 - Westar Energy (Transmission)
Greg Roy
P.O. Box 208
Wichita, KS 67214
Office (785) 575-8167
Cell (785) 554-5489
 - Wichita Water Department
Greg Lolley
8th Floor - City Hall
455 N. Main Wichita, KS 67202
(316) 268-4555
 - Westar Energy (Distribution)
Shane Price
P.O. Box 208
Wichita, KS 67214
(316) 261-6315
 - Wichita Sewer Department
LaDonna Lawrenz
8th Floor - City Hall
455 N. Main Wichita, KS 67202
(316)268-4501
 - Kansas Gas Service
Joe Bridgewater
1021 E. 26th Street N.
Wichita, KS 67219
(316) 832-3158
 - Zayo Fiber
Jeff Capps
(316) 847-7970
 - Black Hills Energy
Suzette Wilson
(316)941-1631
 - Phillips 66
Kevin Kent
(316)618-2415



NOTE:
TREE REMOVAL NOT ALLOWED.
TRIM WITH APPROVAL OF ENGINEER.



REDBUD BIKE PATH
K-96 TO 159TH STREET EAST

PLAN & PROFILE

CITY OF WICHITA, KANSAS
CARY JANZEN, P.E. - CITY ENGINEER
C.O.N. Project #472-85360, O.C.A. #707125

POE & ASSOCIATES, INC.
CONSULTING ENGINEERS
544 West Douglas Avenue
Wichita, KS 67203
Phone 316/685-4114 FAX 316/685-4444

PROFESSIONAL ENGINEER
24211
KANSAS

Engineer: T. EVANS
Designer: J. UNRUH
Dwg: P:\02127 Redbud Wichita\DWG\02127-BASE-tal grade.dwg
Poe Job No: 102127
Date: SEPTEMBER 2018

Sheet of 222