

GENERAL NOTES:

1. Contractor will be required to provide notice to utility companies a minimum of seventy-two (72) hours prior to any excavation, as follows:

Kansas One-Call 687-2470

The Contractor must notify the following in case of an emergency:

AT&T 1-800-246-8464
 Black Hills Energy 1-800-694-8989
 City of Wichita Water & Sewer 1-316-219-8921
 City of Wichita Stormwater 1-316-268-4090
 City of Wichita Traffic 1-316-268-4034
 Cox Communications 1-888-249-3530
 Kansas Gas Service 1-888-482-4950
 Westar Energy 1-800-544-4857

2. Utility service lines, poles, etc. are to be adjusted as necessary by others prior to construction unless the plans specifically call for their adjustment by the Contractor or unless the plans specifically identify a utility to be adjusted by its owner during construction. Existing utilities and their location, as shown on the plans, represent the best information obtainable for design. The Contractor will be required to work around existing utilities within the right-of-way which do not conflict with proposed construction.

3. Rubble from the removal of miscellaneous structures and excess excavation which is to be wasted shall be disposed of on sites to be provided by the Contractor. These sites shall be approved by the Engineer as to suitability, appearance and site location. Locations, in the opinion of the Engineer, that will leave an unsightly appearance will not be approved. All disposal sites must be approved by the Kansas Department of Health and Environment. Material either stockpiled or disposed of in a flood plain will require a Kansas State Board of Agriculture permit. Any material dumped in waters of the United States or wetlands is subject to U.S. Corps of Engineers permitting regulations. Any material buried or stockpiled beyond approved construction limits will require additional archaeological investigations unless buried in a previously approved borrow location.

4. Trees and shrubs in public right-of-way which are in direct conflict with proposed new construction shall be removed by the Contractor with the City Engineer's approval. Trees and shrubs which are not in direct conflict with proposed new construction shall be saved and protected from damage.

5. The Contractor shall give all property owners and/or tenants of developed property abutting the construction of this project a minimum of ten (10) days notice prior to start of construction.

6. The Contractor shall be responsible for preserving property irons. The Contractor will be required to re-establish any property irons which are damaged or destroyed by his construction operations. Such irons shall be re-established by a licensed land surveyor in accordance with state laws.

7. All elevations shown are NAVD 88.

8. All areas disturbed during construction that will not be under proposed pavement shall be restored to match existing conditions.

9. Opening and closing of water valves shall be done slowly to prevent damage to the water distribution system from water hammer. All valves closed by the contractor must be reopened as new construction permits. The project inspector must ascertain that any valve closed by the Contractor is reopened. The contractor will be permitted to operate water valves only when the project inspector assigned to the project is present.

10. The Contractor shall lay a Tracer Wire and Set Test Stations along all water pipe installed in accordance with City Specifications and Tracer Wire Detail on detail sheet WL-101, cost is subsidiary to pipe installation.

11. The Contractor shall protect from damage and support existing utilities through construction as approved by the utility owner and the Engineer at the contractor's expense.

12. Contractor shall limit the extent of trench openings overnight and weekends to less than 50 feet.

13. All existing and proposed erosion control measures including silt fencing, erosion control mat, straw bales, inlet barriers, and const. entrance shall be maintained throughout construction by the contractor and until project is accepted by the City of Wichita. The on-site engineer shall complete weekly reports on the status of erosion control measures. The contractor shall be required to comply with maintenance and/or replacement of erosion control measures as determined by the on-site engineer until project is accepted by City of Wichita. Maintenance and/or replacement of erosion control measures to be paid by L.S. bid item "Maintain Existing BMPs".

14. All areas disturbed by construction are to be seeded as follows:

Seed -- Rye grass; 5 lbs./1000 Sq. Ft.

All costs associated with seeding including mobilization, preparation of ground, seeding, fertilizing, mulching, etc. shall be included in the L.S. bid item "Seeding".

15. The developer for this project is Ritchie Development, Kevin Mullen, (316)684-7300.

16. Mass grading, SWS construction and water line construction may begin while sanitary sewer project is active. Contractors will be expected to coordinate simultaneous construction activities.

17. CONSTRUCTION SEQUENCE & PHASING

The intent of the construction schedule is to complete the sewer, water, storm sewer, and grading that serve Lots 49-64, Blk D and Lots 28-33, Blk E as soon as possible. After the construction is complete for those lots and adjacent right-of-way, paving/sws construction will begin.

Recommended Construction Sequence

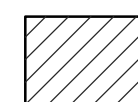
- Sanitary Sewer Line 1, Line 3 Sta 0+00 to Sta 6+62.4, Line 4 & Line 5 may be constructed in any order except for sanitary sewer service #1.
- Complete mass grading of lots and adjacent street right-of-ways for Lots 49-64, Blk D and Lots 28-33, Blk E.
- Install storm sewer and water line that serve Lots 49-64, Blk D and Lots 28-33, Blk E
- The remaining sewer lines & services, and mass grading may be constructed in any order the contractor desires.

Benchmarks

BM#1: RR spike in high line pole, 40' west and 30' south of Lot 60, Block D, Firefly Way Addition.
 Elev. = 1399.54 NAVD88

BM#2: Benchmark disc in top of curb, adjacent to fire hydrant 15' south of SE corner of Lot 2, Block C, Firefly Way Addition.
 Elev. = 1396.95 NAVD88

Benefit District



WATER DISTRIBUTION SYSTEM to serve **FIREFLY WAY ADD. Ph. 6**

CITY OF WICHITA, KANSAS

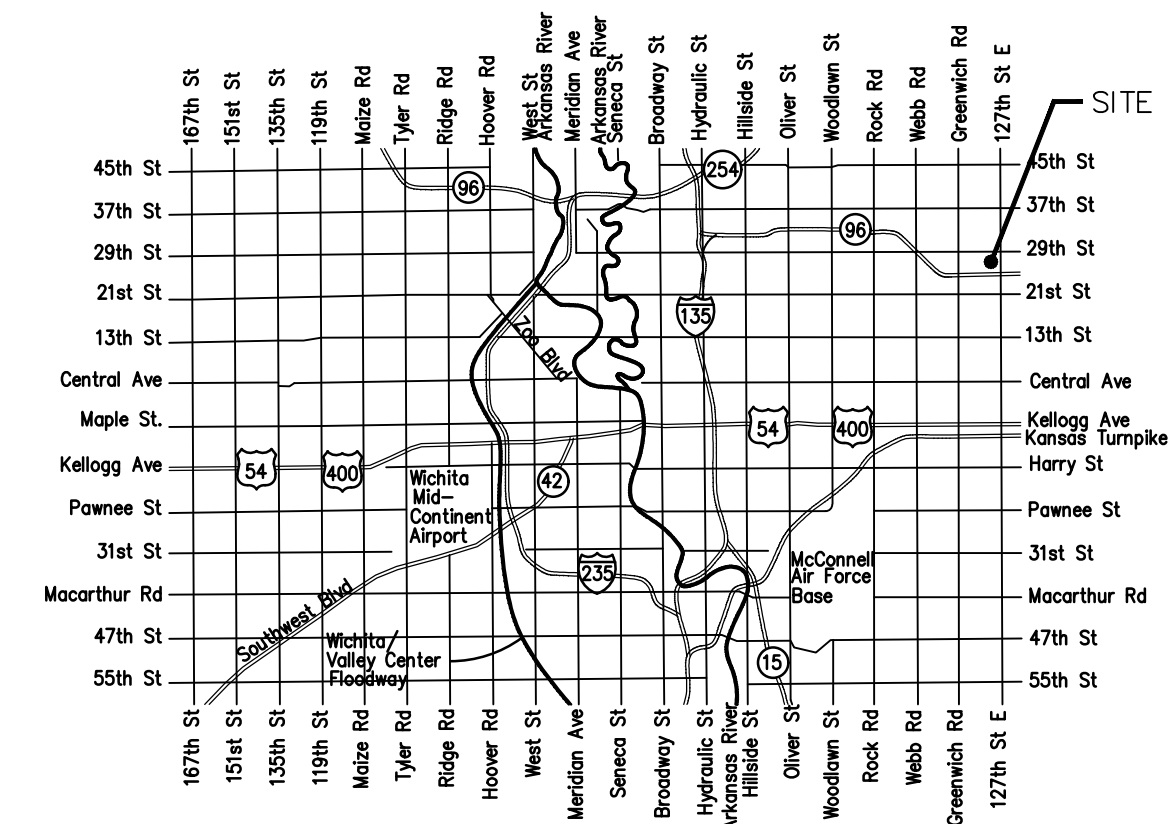
Gary Janzen, P.E. City Engineer

Project Number

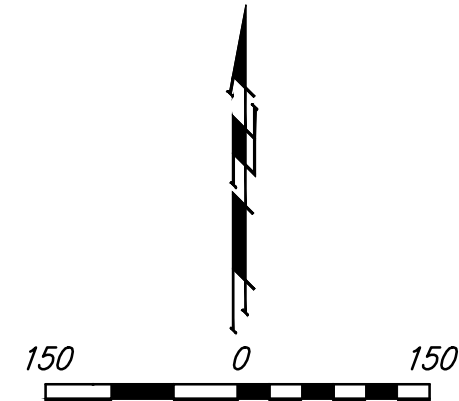
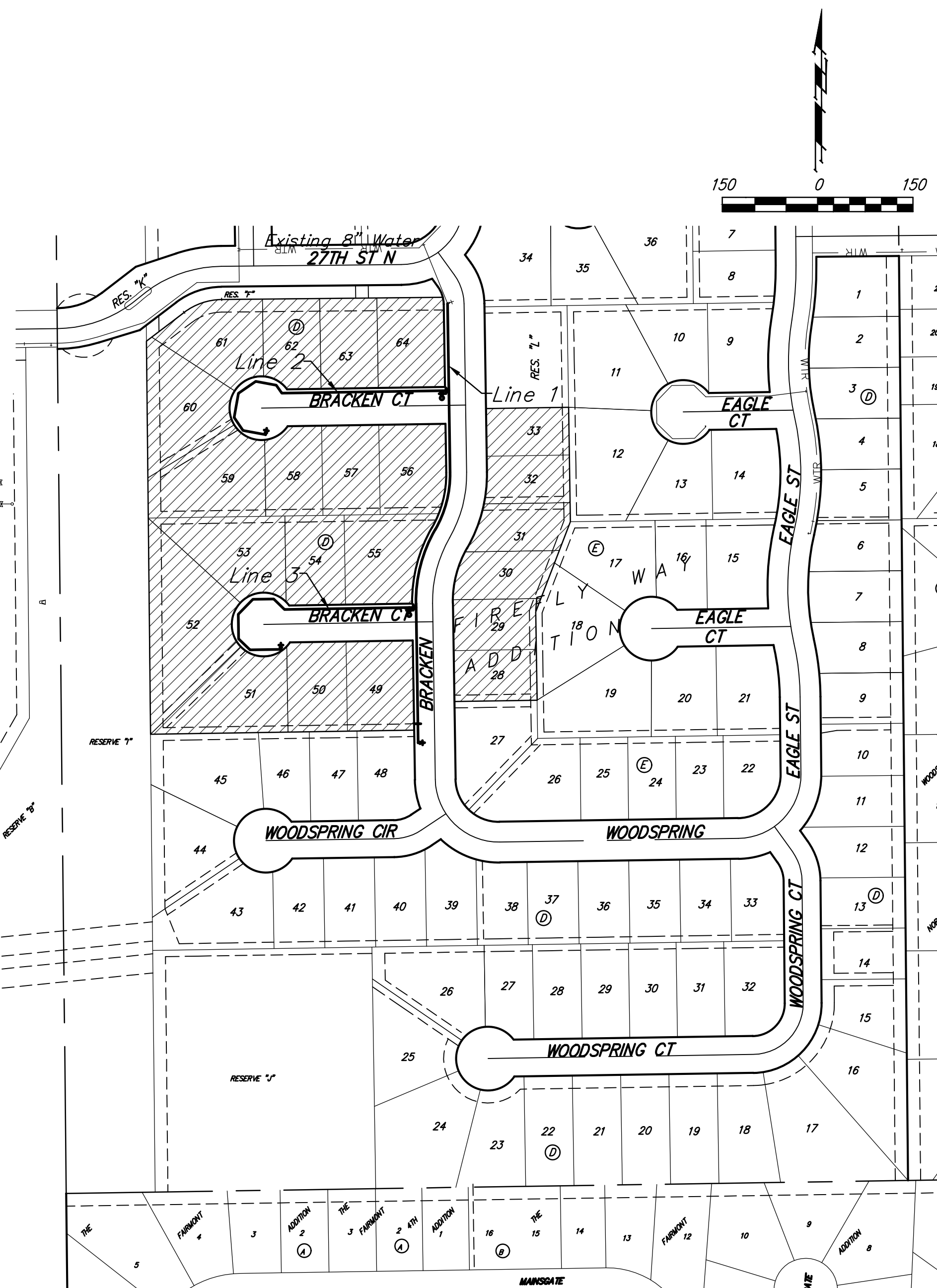
448-90798

O.C.A. Number

735648



Vicinity Map



Sheet Index

Title Sheet	1
Line 1	2
Line 2	3
Line 3	4
Erosion Control Plan	5
Std. Water Assembly Detail	6
Miscellaneous Water Details	7
Erosion Control BMP Details	8-12
Coordinate Sheet	13
Copy of Plat	14



November 2019



Baughman Company, P.A. 315 Ellis St. Wichita, KS 67211 P 316-262-7271 F 316-262-0145
 ENGINEERING | SURVEYING | PLANNING | LANDSCAPE ARCHITECTURE