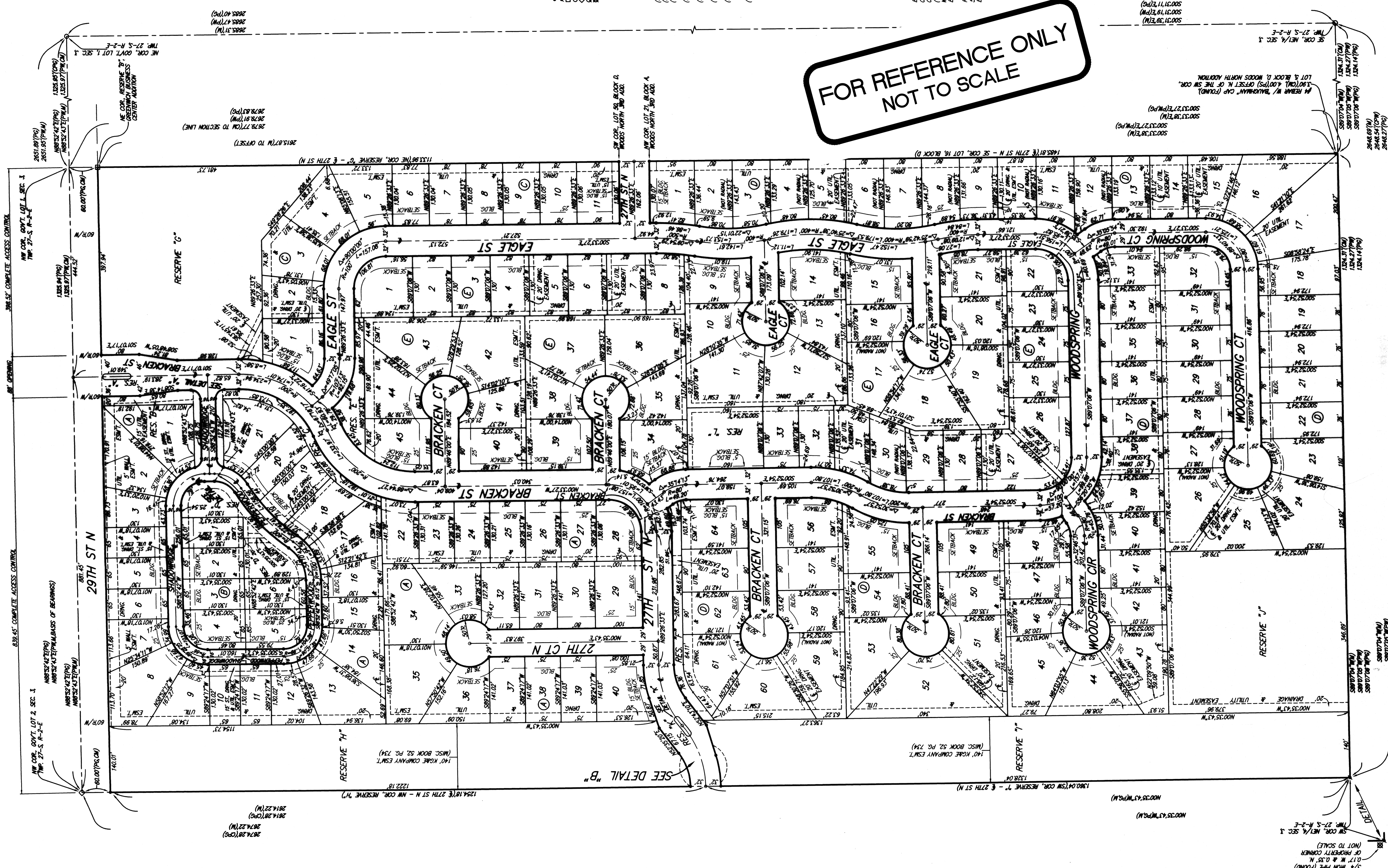


FIREFLY WAY AN ADDITION TO WICHITA, SEDGWICK COUNTY, KANSAS



- (M) = MEASURED
- (PS) = PREVIOUS SURVEY
- (CM) = CALLED AND MEASURED
- (PF) = PLATTED AND FOUND
- (PM) = THE FURNISH PER
- (CPM) = CALCULATED INTO PER
- (PS) = PLATTED AND FOUND
- (CPM) = CALCULATED INTO PER
- (PS) = PLATTED AND FOUND
- (CPM) = CALCULATED INTO PER
- (PS) = PLATTED AND FOUND
- (CPM) = CALCULATED INTO PER

LOT	BLOCK	ELEVATION
1-4	C	1305.5
24-26	D	1307.8
41-43	D	1307.8

BENCHMARK:
CITY OF WICHITA BENCHMARK DISC 1307.7 E. & 146.6 N.
OF THE COR. LOT 1, BLOCK D, FIREFLY WAY, LOT 2, BLOCK A,
WOODSOUTH ADDITION, NE COR. LOT 21, BLOCK A,
ELEV. = 1307.69 WINDERS
RAILROAD SPINE IN E. FACE OF E. 7¹/₂ POLE 39.9' W. &
S&A S. OF NE COR. RESERVE 7, FIREFLY WAY,
ELEV. = 1309.54 WINDERS

FOR REFERENCE ONLY
NOT TO SCALE

NOTE:
A drainage plan has been developed for the site and
shown on sheet 20 of this plat. The drainage plan
shows the location of all sanitary sewer lines and
manholes and is to be used in conjunction with the
sanitary sewer improvement plan. The drainage plan
is subject to the approval of the applicable City or County Engineer and
is not to be used for any other purpose without the
written consent of the engineer.