

PLOTTED: Tuesday, September 03, 2019 @ 11:47 AM

- W 1/4 COR. SEC. 9, T27S, R1E  
 STA. 20+00.00, 0.00' RT.  
 1. FND 3/4" PIPE IN THIMBLE  
 2. CITY OF WICHITA BENCHMARK DISC IN TRAFFIC SIGNAL BASE  
 3. CHISELED "+" ON SE COR. OF SIDEWALK  
 4. CHISELED "+" ON NW COR. CONC. SIGN BASE  
 5. CHISELED "+" ON SW COR. OF CURB INLET  
 6. IN CENTER OF INTERSECTION OF 17TH ST. N. AND BROADWAY  
 7. N=1696478.742, E=1649341.575

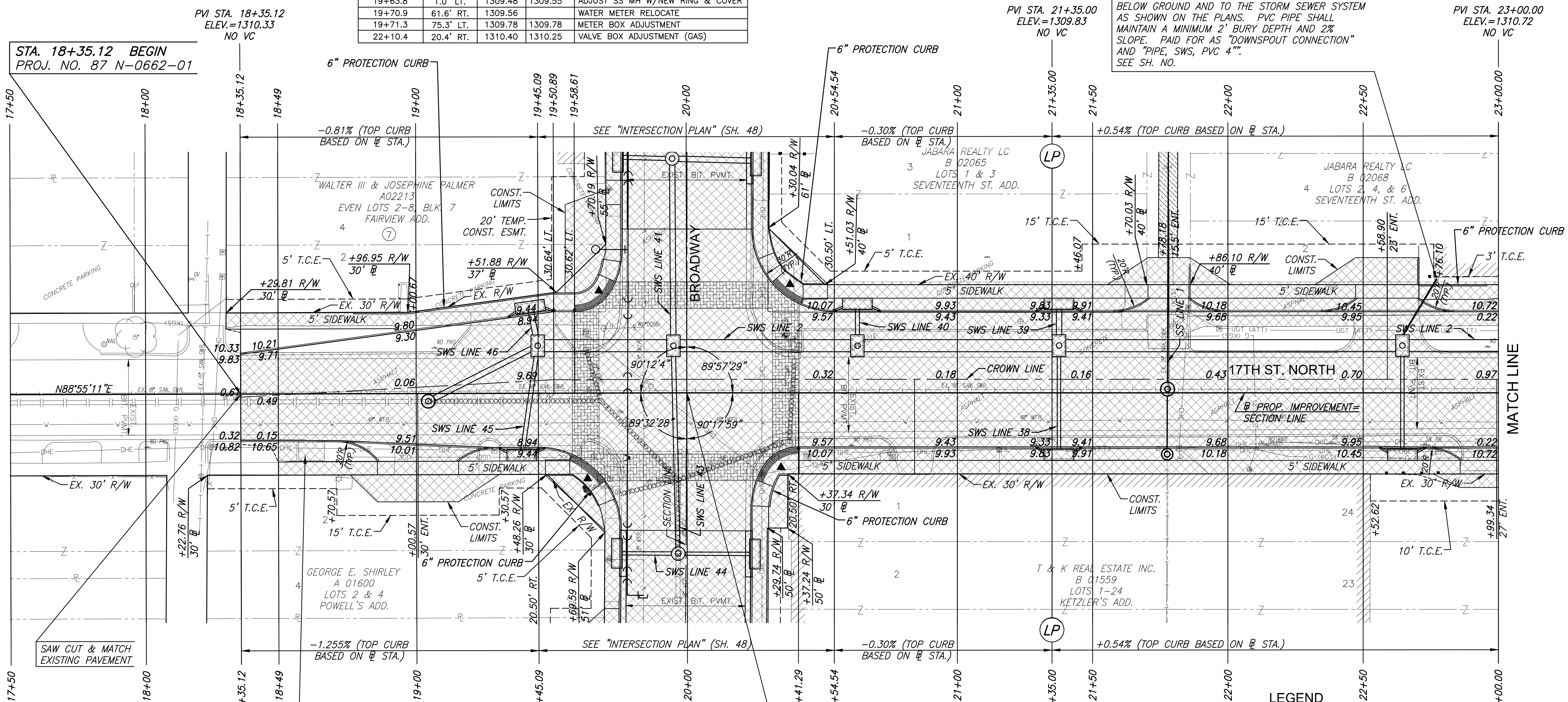
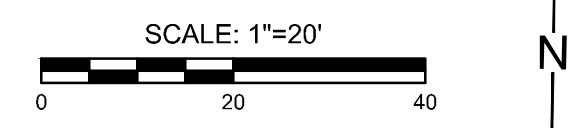
PROTECTION CURB				
STATION TO STATION	SIDE	QUANTITY	REMARKS	
18+76.99 TO 19+69.44	LT.	100.5'	AT NW COR. OF INTERSECTION	
19+47.64 TO 16+67.04	RT.	36.3'	AT SW COR. OF INTERSECTION	
20+30.29 TO 20+37.34	RT.	16.0'	AT SE COR. OF INTERSECTION	
20+30.40 TO 20+51.98	LT.	69.8'	AT NE COR. OF INTERSECTION	
22+70.62 TO 22+95.62	LT.	25.0'		

UTILITY ADJUSTMENTS				
STATION	OFFSET	EXIST. ELEV.	PROP. ELEV.	REMARKS
19+63.8	1.0' LT.	1309.48	1309.55	ADJUST SS MH W/NEW RING & COVER
19+70.9	61.6' RT.	1309.56		WATER METER RELOCATE
19+71.3	75.3' LT.	1309.78	1309.78	METER BOX ADJUSTMENT
22+10.4	20.4' RT.	1310.40	1310.25	VALVE BOX ADJUSTMENT (GAS)

P.O.T. STA. 17+50.00 17TH ST. N  
 1. N=1696474.028, E=1649091.620

P.I. STA. 20+00.00 17TH ST. N  
 1. N=1696478.742, E=1649341.575

STATE	PROJECT NO.	YEAR	SHEET NO.	TOTAL SHEETS
KANSAS	87 N-0662-01	2019	5	194



REMOVAL OF EXISTING PIPES AND STRUCTURES		
STATION TO STATION	SIDE	ITEM
19+04.4 TO 19+68.2	2.9' RT.	63.8' OF 18" VCP
19+62.7	16.5' LT.	CURB INLET
19+62.7 TO 19+68.2	16.5' TO 2.9' LT.	19.1' OF 15" CMP
19+68.2	2.9' LT.	SWS MANHOLE
19+68.2 TO 19+96.7	2.9' LT. TO 32.2' RT.	40.9' OF 18" RCP
19+74.4	36.5' RT.	CURB INLET
19+74.4 TO 19+96.7	36.5' TO 32.2' RT.	22.2' OF 15" RCP
19+96.7	32.2' RT.	SWS MANHOLE
19+96.7 TO 20+38.1	32.2' TO 18.0' RT.	43.7' OF 15" CMP
19+96.7	32.2' TO 62.2' RT.	30.0' OF 18" VCP
20+38.1	18.0' RT.	CURB INLET
20+38.1 TO 20+39.9	18.0' RT. TO 13.8' LT.	31.8' OF 15" CMP
20+39.9	13.8' LT.	CURB INLET

BM #1 CHISELED SQUARE ON TOP OF WEST CURB OF MARKET STREET, 7' S OF SOUTH END OF SW CURB RETURN AT 17TH ST. N. & MARKET, IN FRONT OF FIRE HYDRANT  
 STA. 16+12.08, 39.64' RT. ELEV. 1311.97 (NAVD 88)

BM #2 CITY OF WICHITA BENCHMARK DISC ON NE COR. 17TH ST. N. & BROADWAY IN SW COR. OF TRAFFIC SIGNAL POLE BASE.  
 STA. 20+36.12, 21.14' LT. ELEV. 1309.77 (NAVD 88)

- LEGEND**
- PAVEMENT REMOVAL
  - CONSTRUCT WHEELCHAIR RAMP SEE SH. NO. 66
  - BRICK PAVERS
  - AGGREGATE HOOKUP
  - 8" SIDEWALK
  - STORM SEWER REMOVAL
  - PAVEMENT REMOVED AND REPLACED, SEE SH. NO. 85
  - PROPOSED WESTAR POLE

STREET IMPROVEMENTS FOR  
**17TH ST - BROADWAY TO I-135**  
 FROM BROADWAY TO I-135

©2019 MKEC Engineering All Rights Reserved  
 These drawings and their contents, including, but not limited to, all concepts, designs, & ideas are the exclusive property of MKEC Engineering (MKEC), and may not be used or reproduced in any way without the express consent of MKEC.

**17TH ST. PAVING PLAN STA. 17+50 TO STA. 23+00**

PROJECT NO.	87 N-0662-01	
DATE	8/30/2019	
SCALE	1"=20'	
DESIGNED	DRAWN	CHECKED
GN	RAM	JRA

NO.	REVISION	DATE