

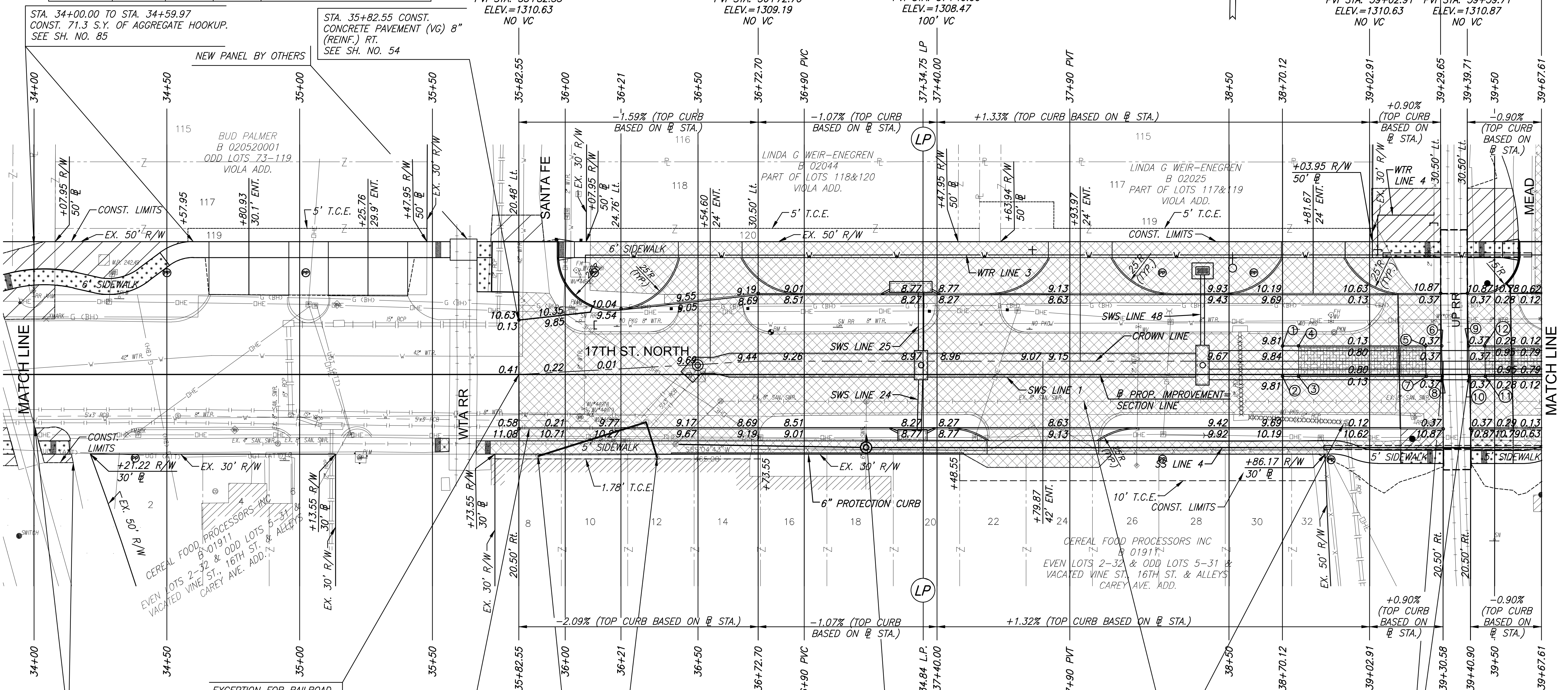
PLOTTED: Tuesday, September 03, 2019 @ 11:50AM
 J:\CIVIL\177\DWG\PAV\177-EPAL.DWG

UTILITY ADJUSTMENTS				
STATION	OFFSET	EXIST. ELEV.	PROP. ELEV.	REMARKS
36+05.4	38.8' LT		1310.23	VALVE BOX ADJUSTMENT (WTR)
36+05.5	16.1' RT.	1310.15	1310.11	WATER METER ADJUSTMENT
36+05.7	36.7' LT.		1310.27	VALVE BOX ADJUSTMENT (WTR)
36+07.2	12.9' RT.		1310.08	VALVE BOX ADJUSTMENT (WTR)
36+08.7	14.6' RT		1310.05	VALVE BOX ADJUSTMENT (WTR)
36+10.31	14.9' RT.		1310.01	VALVE BOX ADJUSTMENT (WTR)
36+30.5	18.0' RT.	1310.27	1309.59	ADJUST SWS MH
36+41.5	26.3' RT.	1310.33	1310.55	ADJUST SS MH
38+94.3	18.0' RT.	1310.02	1310.01	ADJUST SS MH W/NEW RING & COVER

REMOVAL OF EXISTING PIPES AND STRUCTURES			
STATION TO STATION	SIDE	ITEM	REMARKS
36+46.5	0.2' RT.	12" OF 5"X3" RCB 45° BEND	
37+34.00	19.1' LT.	5' OF 8" PIPE	
38+40.00	19.4' LT.	5' OF 8" PIPE	
38+54.1	17.1' LT.	CURB INLET	
38+54.1 TO 38+54.6	17.1' LT. TO 16.2' RT.	33.4' OF 12" RCB	
38+54.6	16.2' RT.	CURB INLET	
38+54.6 TO 38+94.2	16.2' TO 18.0' RT.	39.7' OF 12" RCP	

PROTECTION CURB			
STATION TO STATION	SIDE	QUANTITY	REMARKS
36+40.00 TO 37+50.00	RT.	110.0	

STATE	PROJECT NO.	YEAR	SHEET NO.	TOTAL SHEETS
KANSAS	87 N-0662-01	2019	8	194



MEDIAN POINTS				
POINT NO.	STATION	OFFSET	TOP CURB ELEVATION	FLOWLINE ELEVATION
1	38+70.12	10.75' LT.	1309.81	1309.81
2	38+70.12	0.75' RT.	1309.81	1309.81
3	38+76.12	0.75' RT.	1310.53	1309.86
4	38+76.12	10.75' LT.	1340.53	1309.86
5	39+24.01	10.75' LT.	1310.99	1310.32
6	39+30.01	10.75' LT.	1310.37	1310.37
7	39+24.23	0.75' RT.	1310.99	1310.32
8	39+30.23	0.75' RT.	1310.37	1310.37
9	39+40.18	10.75' LT.	1310.37	1310.37
10	39+40.45	0.75' RT.	1310.37	1310.37
11	39+46.45	0.75' RT.	1310.99	1310.32
12	39+46.18	10.75' LT.	1310.99	1310.32

STA. 35+89.72, 30.7' RT. CONST. "DOWNSPOUT CONNECTION" AND 44.8' OF 6" PVC PIPE (SDR-35) AND CONNECT TO THE EXISTING STORM SEWER MANHOLE STACK. CONNECTIONS SHALL INCLUDE PIPE, FITTINGS AND ADAPTORS TO ROUTE THE DOWNSPOUT DRAINAGE BELOW GROUND AND TO THE STORM SEWER SYSTEM AS SHOWN ON THE PLANS. PVC PIPE SHALL MAINTAIN A MINIMUM 2' BURY DEPTH AND 2% SLOPE. PAID FOR AS "DOWNSPOUT CONNECTION", "PIPE, SWS, PVC 6" AND "CONNECTION TO EXISTING STRUCTURE". SEE SH. NO.

STA. 36+34.65, 31.4' RT. CONST. "DOWNSPOUT CONNECTION" AND 16.1' OF 6" PVC PIPE (SDR-35) AND CONNECT TO THE EXISTING STORM SEWER MANHOLE STACK. CONNECTIONS SHALL INCLUDE PIPE, FITTINGS AND ADAPTORS TO ROUTE THE DOWNSPOUT DRAINAGE BELOW GROUND AND TO THE STORM SEWER SYSTEM AS SHOWN ON THE PLANS. PVC PIPE SHALL MAINTAIN A MINIMUM 2' BURY DEPTH AND 2% SLOPE. PAID FOR AS "DOWNSPOUT CONNECTION", "PIPE, SWS, PVC 6" AND "CONNECTION TO EXISTING STRUCTURE". SEE SH. NO.

STA. 38+94.2, 18.0' RT. PLUG HOLE IN MANHOLE (W). COST OF PLUG IS SUBSIDIARY TO PIPE REMOVED.

ABANDON 15.3 L.F. OF 6" SANITARY SEWER PIPE IN PLACE. ABANDON PER CITY SPECIFICATIONS.

LEGEND

- PAVEMENT REMOVAL
- CONSTRUCT WHEELCHAIR RAMP SEE SH. NO. 66
- BRICK PAVERS
- AGGREGATE HOOKUP
- 8" SIDEWALK
- STORM SEWER REMOVAL
- PAVEMENT REMOVED AND REPLACED, SEE SH. NO. 85
- PROPOSED WESTAR POLE

STREET IMPROVEMENTS FOR
17TH ST - BROADWAY TO I-135
 FROM BROADWAY TO I-135

©2019 MKEC Engineering All Rights Reserved
 These drawings and their contents, including, but not limited to, all concepts, designs, & fees are the exclusive property of MKEC Engineering (MKEC), and may not be used or reproduced in any way without the express consent of MKEC.

17TH ST. PAVING PLAN STA. 34+00 TO STA. 39+67.61		
PROJECT NO.	87 N-0662-01	
DATE	8/30/2019	
SCALE	1"=20'	
DESIGNED	GN	
DRAWN	RAM	
CHECKED	JRA	
NO.	REVISION	DATE
SHEET NO. 8 OF 194		