

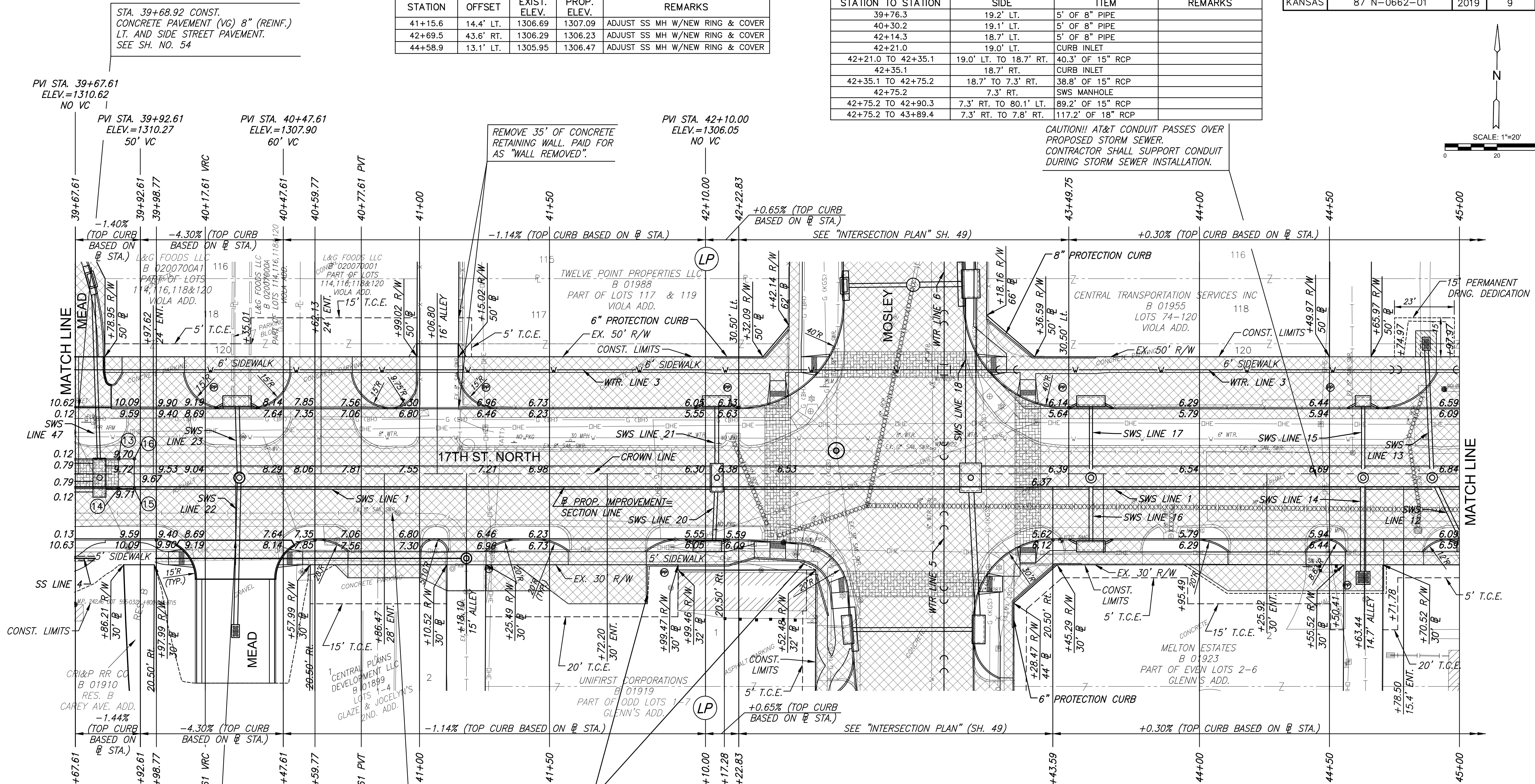
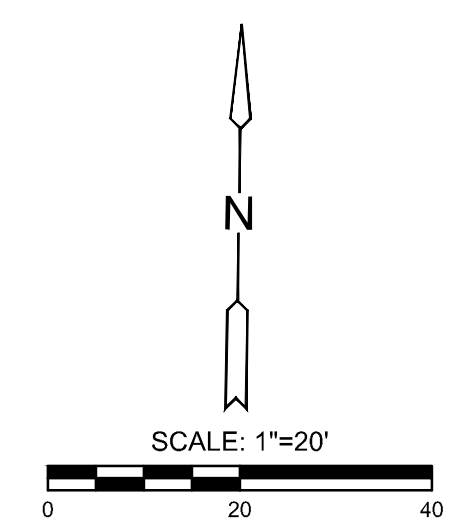
PLOTTED: Tuesday, September 03, 2019 @ 11:51 AM

J:\CIVIL\17\1706\PAV\1717-EPREV.DWG

UTILITY ADJUSTMENTS				
STATION	OFFSET	EXIST. ELEV.	PROP. ELEV.	REMARKS
41+15.6	14.4' LT.	1306.69	1307.09	ADJUST SS MH W/NEW RING & COVER
42+69.5	43.6' RT.	1306.29	1306.23	ADJUST SS MH W/NEW RING & COVER
44+58.9	13.1' LT.	1305.95	1306.47	ADJUST SS MH W/NEW RING & COVER

REMOVAL OF EXISTING PIPES AND STRUCTURES			
STATION TO STATION	SIDE	ITEM	REMARKS
39+76.3	19.2' LT.	5' OF 8" PIPE	
40+30.2	19.1' LT.	5' OF 8" PIPE	
42+14.3	18.7' LT.	5' OF 8" PIPE	
42+21.0	19.0' LT.	CURB INLET	
42+21.0 TO 42+35.1	19.0' LT. TO 18.7' RT.	40.3' OF 15" RCP	
42+35.1	18.7' RT.	CURB INLET	
42+35.1 TO 42+75.2	18.7' TO 7.3' RT.	38.8' OF 15" RCP	
42+75.2	7.3' RT.	SWS MANHOLE	
42+75.2 TO 42+90.3	7.3' RT. TO 80.1' LT.	89.2' OF 15" RCP	
42+75.2 TO 43+89.4	7.3' RT. TO 7.8' RT.	117.2' OF 18" RCP	

STATE	PROJECT NO.	YEAR	SHEET NO.	TOTAL SHEETS
KANSAS	87 N-0662-01	2019	9	194



STA. 39+68.92 CONST.
CONCRETE PAVEMENT (VG) 8" (REINF.)
LT. AND SIDE STREET PAVEMENT.
SEE SH. NO. 54

REMOVE 35' OF CONCRETE
RETAINING WALL. PAID FOR
AS "WALL REMOVED".

CAUTION!! AT&T CONDUIT PASSES OVER
PROPOSED STORM SEWER.
CONTRACTOR SHALL SUPPORT CONDUIT
DURING STORM SEWER INSTALLATION.

PROTECTION CURB				
STATION TO STATION	SIDE	QUANTITY	REMARKS	
41+87.20 TO 42+58.99	RT.	99.6'	AT SW COR. OF INTERSECTION	
42+13.51 TO 42+42.08	LT.	33.4'	AT NW COR. OF INTERSECTION	
43+18.15 TO 43+60.06	LT.	47.0'	AT NE COR. OF INTERSECTION	
43+27.93 TO 43+54.52	RT.	42.1'	AT SE COR. OF INTERSECTION	

MEDIAN POINTS				
POINT NO.	STATION	OFFSET	TOP CURB ELEVATION	FLOWLINE ELEVATION
13	39+84.31	10.75' LT.	1310.51	1309.84
14	39+84.31	0.75' RT.	1310.51	1309.84
15	39+90.31	0.75' RT.	1309.71	1309.71
16	39+90.31	10.75' LT.	1309.70	1309.70

REMOVAL OF EXISTING PIPES AND STRUCTURES (CONT.)			
STATION TO STATION	SIDE	ITEM	REMARKS
42+97.0	77.8' LT.	5' OF 8" PIPE	
42+97.4	3.5' LT.	12' OF 8" PIPE	
43+12.0	18.5' LT.	5' OF 6" PIPE	
43+58.3	18.5' LT.	5' OF 6" PIPE	
43+89.0	19.1' RT.	CURB INLET	
43+89.0 TO 43+89.4	19.1' RT. TO 7.8' RT.	11.2' OF 18" RCP	
43+89.4	7.8' RT.	SWS MANHOLE	
43+89.4 TO 44+84.6	7.8' TO 8.8' RT.	95.2' OF 18" RCP	
44+62.9	18.2' LT.	5' OF 6" PIPE	
44+84.6	8.8' RT.	SWS MANHOLE	
44+84.6 TO 44+80.6	8.8' RT. TO 16.9' LT.	25.9' OF 12" RCP	
44+84.6 TO 44+84.0	8.8' RT. TO 16.7' RT.	8.0' OF 12" RCP	
44+84.6 TO 45+00.0	7.8' TO 8.8' RT.	15.4' OF 18" RCP	
44+80.6	16.9' LT.	CURB INLET	
44+80.6 TO 44+86.1	16.9' TO 37.6' LT.	21.4' OF 12" RCP	
44+86.1	37.6' LT.	CURB INLET	
44+84.0	16.7' RT.	DRIVE INLET	
44+88.9	18.2' LT.	5' OF 6" PIPE	

- LEGEND**
- PAVEMENT REMOVAL
 - CONSTRUCT WHEELCHAIR RAMP SEE SH. NO. 66
 - BRICK PAVERS
 - AGGREGATE HOOKUP
 - 8" SIDEWALK
 - STORM SEWER REMOVAL
 - PAVEMENT REMOVED AND REPLACED, SEE SH. NO. 85
 - PROPOSED WESTAR POLE

STREET IMPROVEMENTS FOR
17TH ST - BROADWAY TO I-135
FROM BROADWAY TO I-135

©2019 MKEC Engineering All Rights Reserved
These drawings and their contents, including, but not limited to, all concepts, designs, & ideas are the exclusive property of MKEC Engineering (MKEC), and may not be used or reproduced in any way without the express consent of MKEC.

17TH ST. PAVING
PLAN STA. 39+67.61
TO STA. 45+00

PROJECT NO.	87 N-0662-01	
DATE	8/30/2019	
SCALE	1"=20'	
DESIGNED	DRAWN	CHECKED
GN	RAM	JRA

NO.	REVISION	DATE