

CENTER SEC. COR. 9, T27S, R1E
 STA. 46+35.65, 0.00' RT.
 1. N=1696521.119, E=1651976.886

P.I. STA. 46+35.65, 17TH ST. N.
 1. N=1696521.119, E=1651976.886

UTILITY ADJUSTMENTS				
STATION	OFFSET	EXIST. ELEV.	PROP. ELEV.	REMARKS
45+47.9	34.6' LT.	1307.68		WATER METER RELOCATE
47+79.7	19.9' RT.	1306.43		WATER METER RELOCATE
48+04.3	5.8' RT.	1305.82	1306.02	ADJUST SS MH W/NEW RING & COVER

STATE	PROJECT NO.	YEAR	SHEET NO.	TOTAL SHEETS
KANSAS	87 N-0662-01	2019	10	194



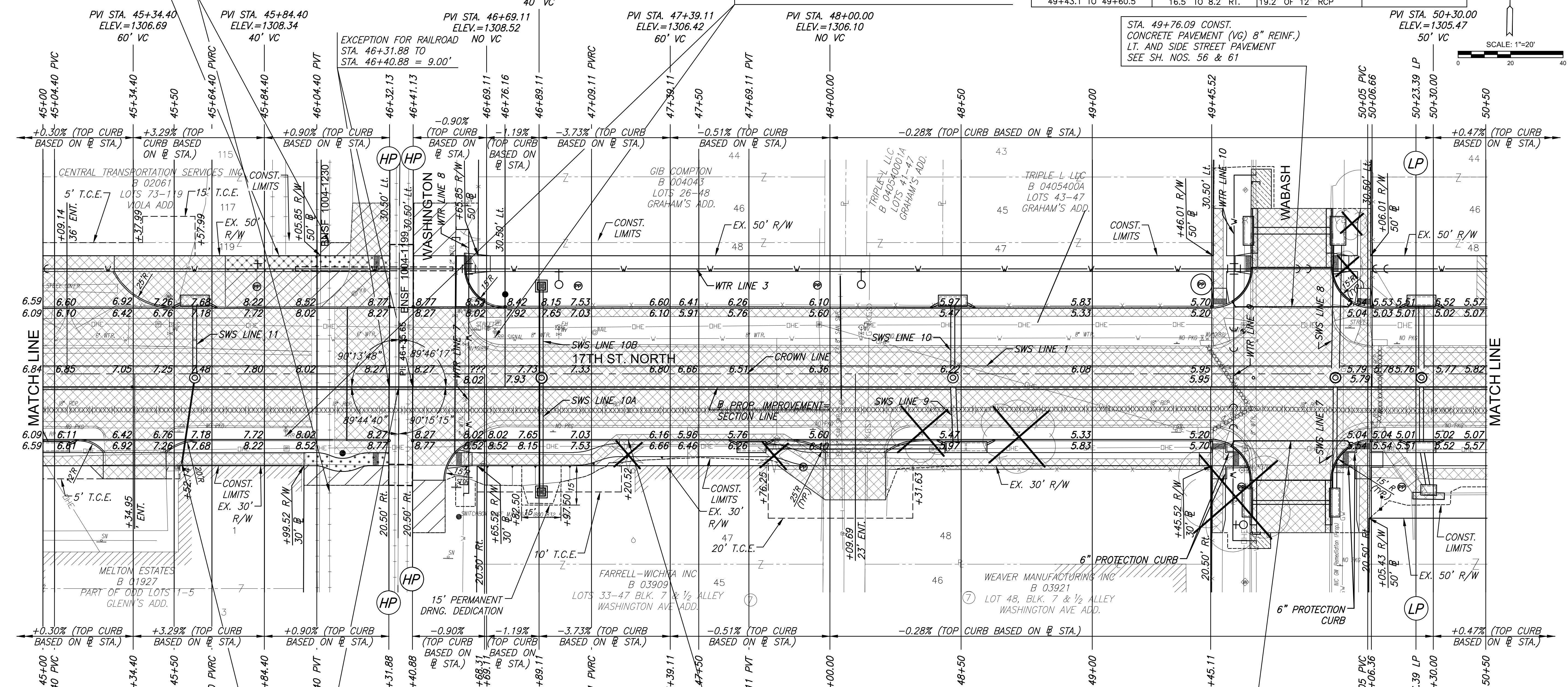
STA. 45+89.95, 50' LT. INSTALL "END OF TRACK DEVICE" AT THE LOCATION DIRECTED BY THE ENGINEER. MATERIALS AND INSTALLATION SHALL BE IN ACCORDANCE WITH BNSF STANDARD SPECIFICATIONS FOR INDUSTRIAL TRACK.

STA. 46+09.18, 55' LT. TO 40' RT. REMOVE 95 L.F. OF EXISTING RAIL TIES AND CROSSING. PAID FOR AS "RAILROAD TRACK REMOVED." INSTALL "END OF TRACK DEVICE" AT EACH END OF REMAINING TRACK. "END OF TRACK DEVICE" PAID FOR SEPARATELY. MATERIALS AND INSTALLATION SHALL BE IN ACCORDANCE WITH BNSF STANDARD SPECIFICATIONS FOR INDUSTRIAL TRACK.

STA. 46+72.25, 18.88' LT. AND STA. 45+92.51 18.70' RT. REMOVE EXISTING RAILROAD SIGNALS. PROTECT AND STORE SIGNALS AS DIRECTED BY THE ENGINEER. PAID FOR AS "RAILROAD SIGNAL REMOVED" PER EACH REMOVAL.

REMOVAL OF EXISTING PIPES AND STRUCTURES			
STATION TO STATION	SIDE	ITEM	REMARKS
45+00.0 TO 49+60.5	8.8' TO 8.2' RT.	460.4' OF 18" RCP	
45+57.8	18.2' LT.	5' OF 6" PIPE	
46+90.0	18.3' LT.	5' OF 8" PIPE	
48+46.8	18.6' LT.	5' OF 8" PIPE	
49+43.1	16.5' RT.	CURB INLET	
49+43.1 TO 49+60.5	16.5' TO 8.2' RT.	19.2' OF 12" RCP	

STA. 49+76.09 CONST. CONCRETE PAVEMENT (VG) 8" REINF. LT. AND SIDE STREET PAVEMENT SEE SH. NOS. 56 & 61



STA. 45+52.92, 29.1' RT. CONST. "DOWNSPOUT CONNECTION" AND 35.0' OF 4" PVC PIPE (SDR-35) AND CONNECT TO STORM SEWER SYSTEM. CONNECTIONS SHALL INCLUDE PIPE, FITTINGS AND ADAPTORS TO ROUTE THE DOWNSPOUT DRAINAGE BELOW GROUND AND TO THE STORM SEWER SYSTEM AS SHOWN ON THE PLANS. PVC PIPE SHALL MAINTAIN A MINIMUM 2' BURY DEPTH AND 2% SLOPE. PAID FOR AS "DOWNSPOUT CONNECTION" AND "PIPE, SWS, PVC 4\"

STA. 46+35.65, 0.00' RT. CENTER COR. SEC. 9, T27S, R1E

STA. 47+23.0, 20.5' RT. CONST. NEENAH R-3262-3 OR EQUIVALENT CURB CASTING AT END OF EXISTING PIPE. TRANSITION CURB 2' ON EITHER SIDE TO MATCH CASTING SHAPE. CONFIRM PIPE SIZE PRIOR TO ORDERING FROM MANUFACTURER. PAID FOR AS "CURB CASTING 6\"

PROTECTION CURB			
STATION TO STATION	SIDE	QUANTITY	REMARKS
49+50.75 TO 49+59.06	RT.	21.8'	AT SW COR. OF INTERSECTION
49+92.40 TO 50+10.76	RT.	41.5'	AT SE COR. OF INTERSECTION

REMOVAL OF EXISTING PIPES AND STRUCTURES (CONT.)			
STATION TO STATION	SIDE	ITEM	REMARKS
49+43.6	16.8' LT.	CURB INLET	
49+43.6 TO 49+60.5	16.8' LT. TO 8.2' RT.	30.2' OF 12" RCP	
49+60.5	8.2' RT.	SWS MANHOLE	
49+60.5 TO 50+09.2	8.2' TO 8.9' RT.	48.8' OF 18" RCP	
49+62.4	59.5' LT.	5' OF 8" PIPE	
49+62.5	3.5' LT.	12' OF 8" PIPE	
49+62.5	44.0' RT.	5' OF 8" PIPE	
50+09.0	16.2' RT.	CURB INLET	
50+09.0 TO 50+09.2	16.2' TO 8.9' RT.	7.3' OF 12" RCP	
50+09.2 TO 50+09.7	8.9' RT. TO 16.8' LT.	25.8' OF 12" RCP	
50+09.2	8.9' RT.	SWS MANHOLE	
50+09.7	16.8' LT.	CURB INLET	
50+09.2 TO 50+50.0	8.9' TO 9.0' RT.	40.8' OF 24" RCP	

- LEGEND**
- PAVEMENT REMOVAL
 - CONSTRUCT WHEELCHAIR RAMP SEE SH. NO. 66
 - BRICK PAVERS
 - AGGREGATE HOOKUP
 - 8" SIDEWALK
 - STORM SEWER REMOVAL
 - PAVEMENT REMOVED AND REPLACED, SEE SH. NO. 85
 - PROPOSED WESTAR POLE

STREET IMPROVEMENTS FOR
17TH ST - BROADWAY TO I-135
 FROM BROADWAY TO I-135

©2019 MKEC Engineering All Rights Reserved
 These drawings and their contents, including, but not limited to, all concepts, designs, & ideas are the exclusive property of MKEC Engineering (MKEC), and may not be used or reproduced in any way without the express consent of MKEC.

17TH ST. PAVING PLAN STA. 45+00 TO STA. 50+50

PROJECT NO.	87 N-0662-01	
DATE	8/30/2019	
SCALE	1"=20'	
DESIGNED	GN	
DRAWN	RAM	
CHECKED	JRA	
NO.	REVISION	DATE
SHEET NO.		