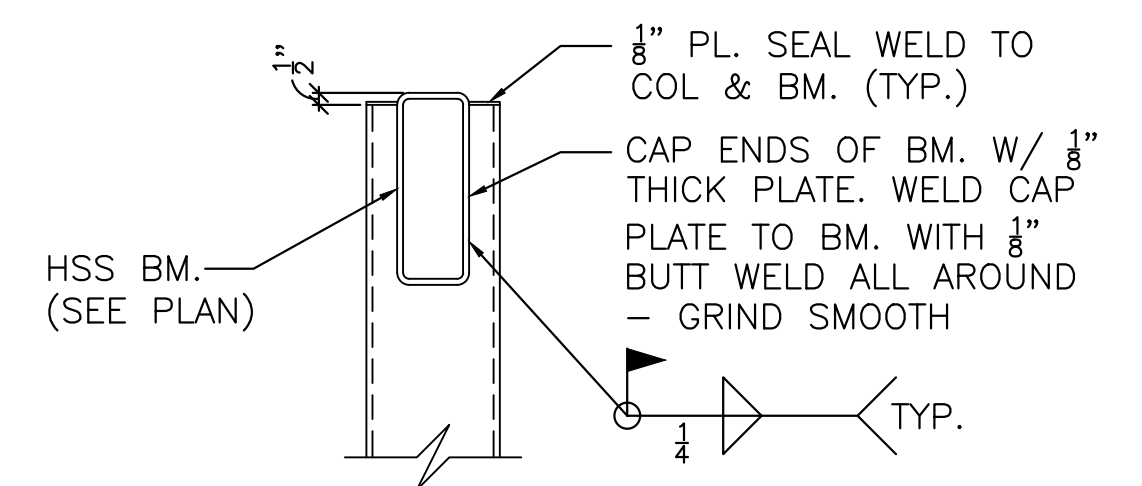


STATE	PROJECT NO.	YEAR	SHEET NO.	TOTAL SHEETS
KANSAS	87 N-0662-01	2019	127	194



### STEEL COLUMN SCHEDULE

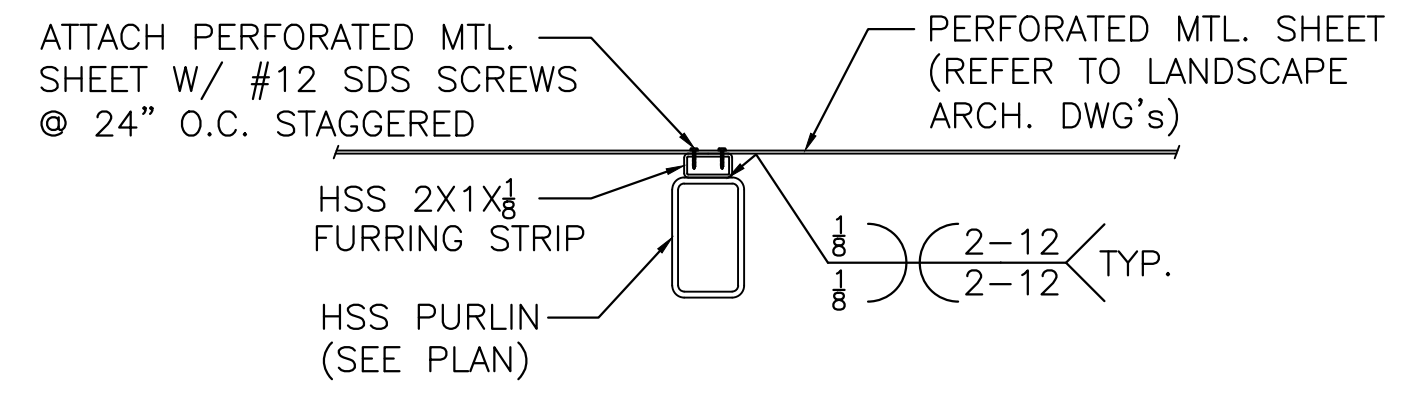
MARK	SIZE	BASE PL. SIZE	ANCHOR BOLTS	ADHESIVE ANCHOR OPTION	DIAGRAM
C1	HSS 5"Ø X 0.312"	12"x2"x1'-0"	(4) 3/4"Ø X 1'-5" TACK WELD BOT. NUT	(4) 3/4"Ø x 1'-3" DRILL & ANCHOR 10" INTO CONC. w/ HILTI HY200	
C2	HSS 5"Ø X 0.500"	12"x2"x1'-0"	(4) 3/4"Ø X 1'-5" TACK WELD BOT. NUT	(4) 3/4"Ø x 1'-3" DRILL & ANCHOR 10" INTO CONC. w/ HILTI HY200	



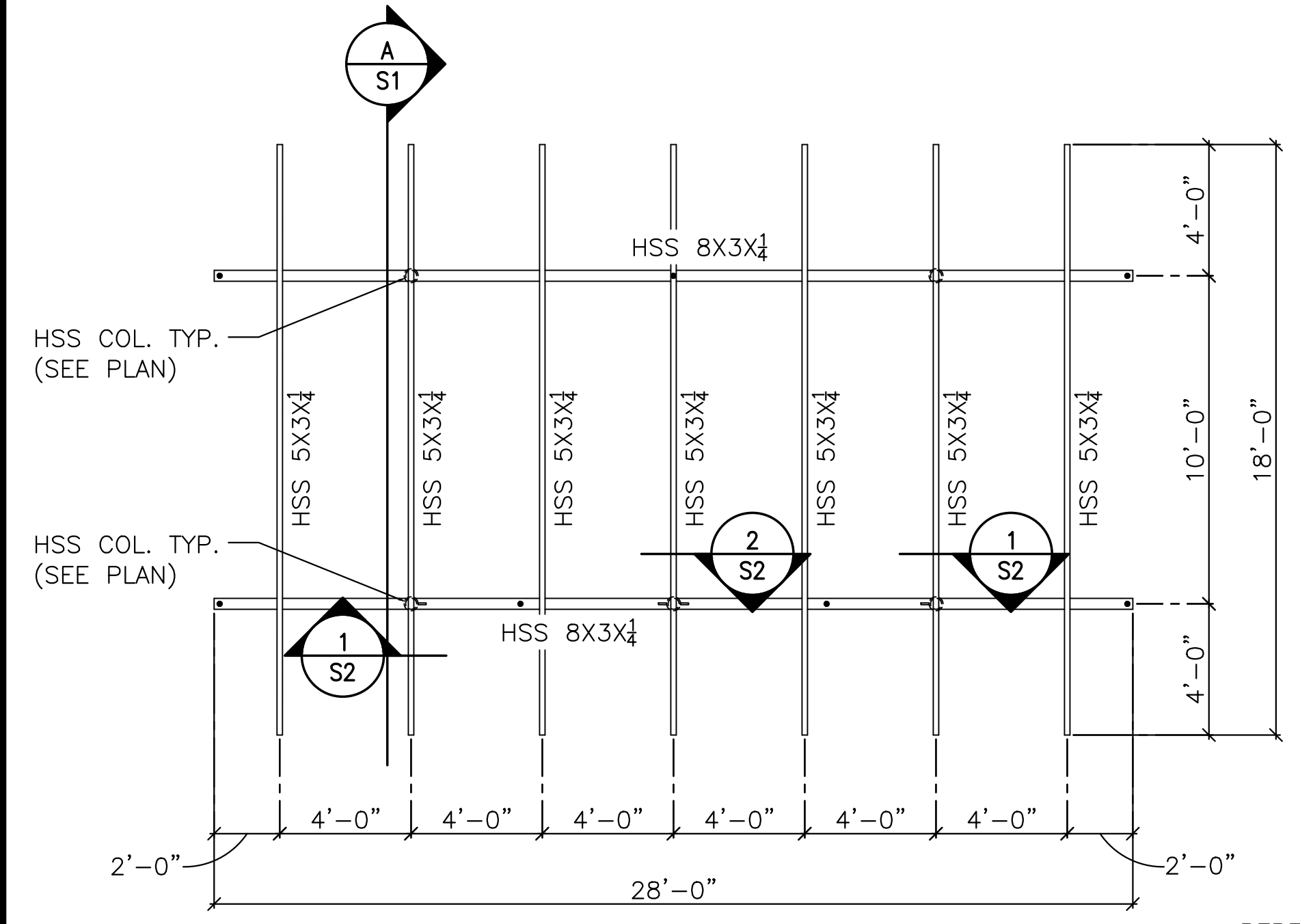
**1 S1**  
SCALE: 1-1/2" = 1'-0"

### PAD FOOTING SCHEDULE

MARK	SIZE	REINF.
(A)	3'-8" SQ. X 2'-8" DP. MIN.	(4) #4 EA. WAY TOP & BOT.

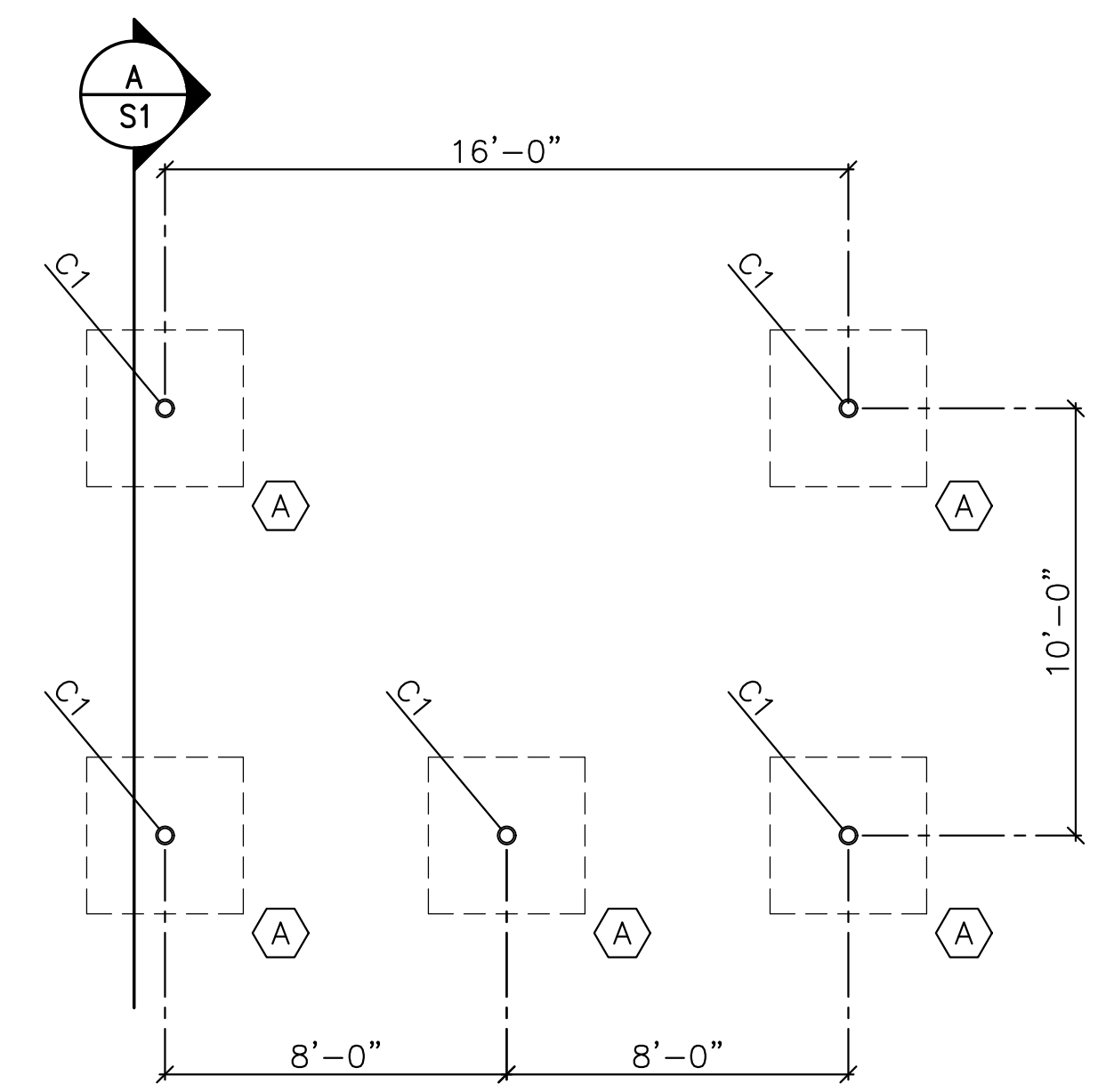


**2 S1**  
SCALE: 1-1/2" = 1'-0"



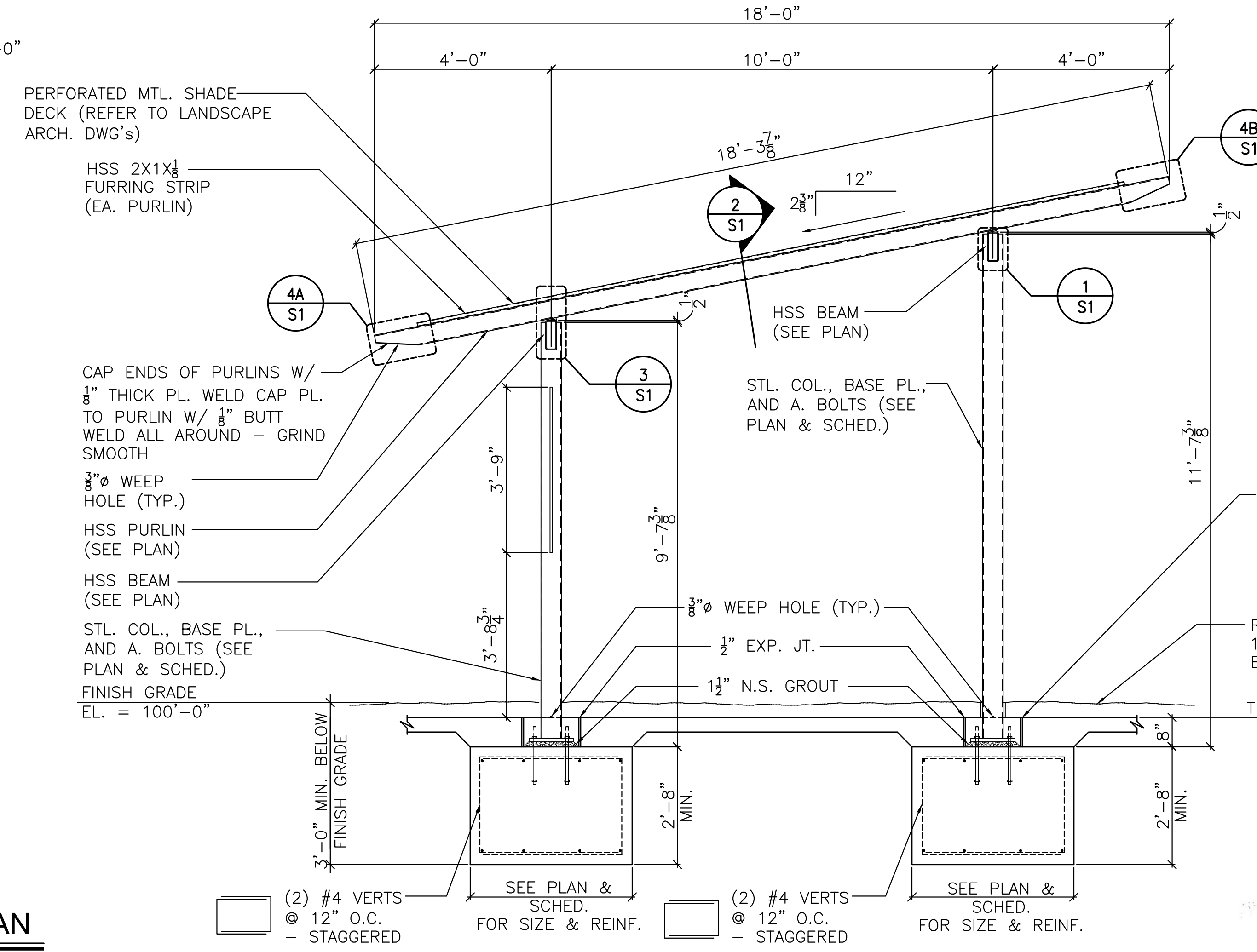
**LARGE SHADE STRUCTURE FRAMING PLAN**

- SCALE: 1/4" = 1'-0"
- NOTES:
1.  $\phi$  WEEP HOLE IN BOTTOM OF BEAM.
  2. REFER TO SHEET 111 FOR LOCATION.
  3. INSTALL BIRD-X NARROW STAINLESS STEEL BIRD SPIKES OR APPROVED EQUAL ON TOP OF BEAMS BETWEEN PURLINS. INSTALL PER MANUFACTURER'S RECOMMENDATIONS.

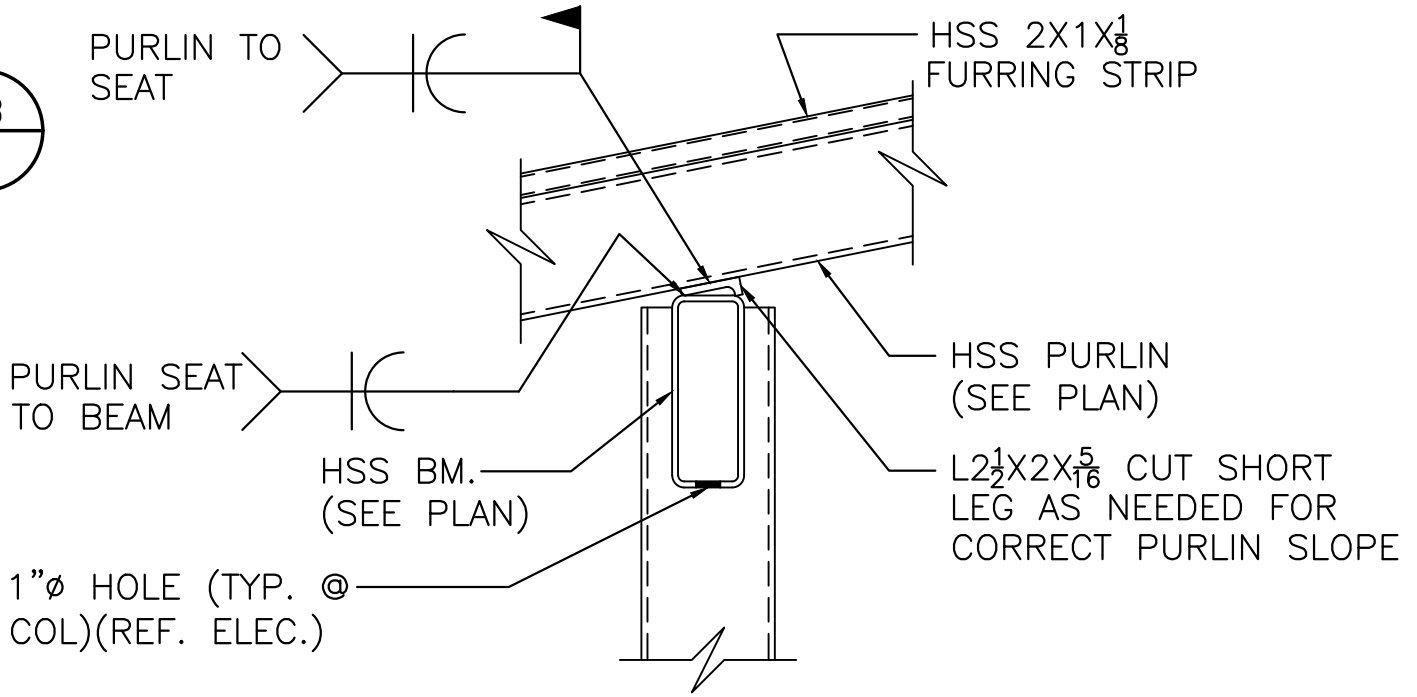


**LARGE SHADE STRUCTURE FTG. & FNDN. PLAN**

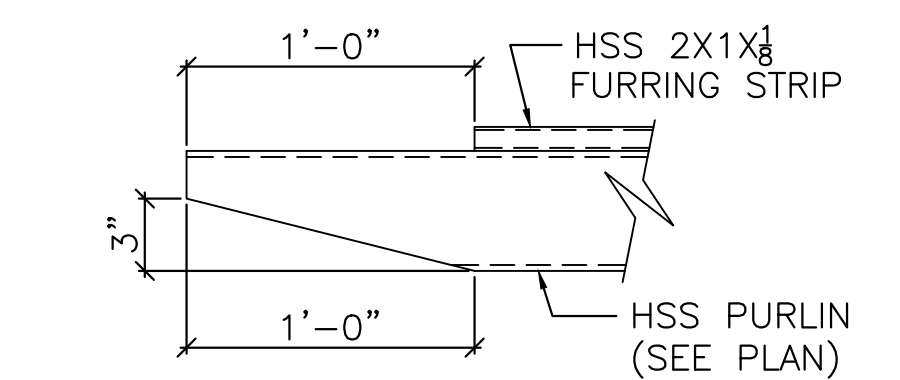
SCALE: 1/4" = 1'-0"



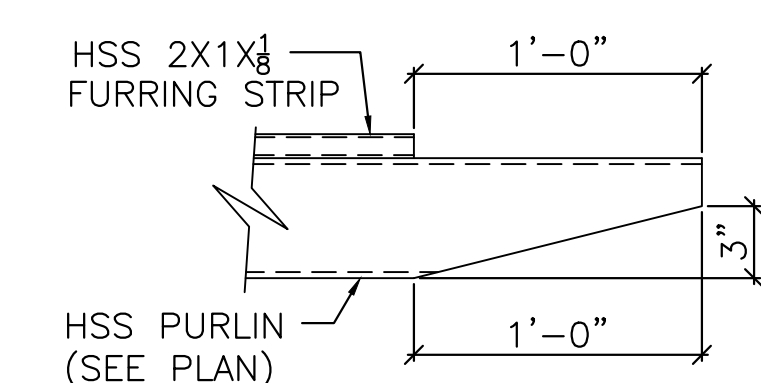
**A S1**  
SCALE: 1/2" = 1'-0"



**3 S1**  
SCALE: 1-1/2" = 1'-0"



**4A S1**  
SCALE: 1-1/2" = 1'-0"



**4B S1**  
SCALE: 1-1/2" = 1'-0"



STREET IMPROVEMENTS FOR  
**17TH ST - BROADWAY TO I-135**  
FROM BROADWAY TO I-135

©2016 MKEC Engineering All Rights Reserved www.mkec.com  
These drawings and their contents, including, but not limited to, all concepts, designs, & ideas are the exclusive property of MKEC Engineering (MKEC), and may not be used or reproduced in any way without the express consent of MKEC.

**LARGE SHADE STRUCTURE DETAILS - S1**

PROJECT NO.	87 N-0662-01	
DATE	8/30/2019	
SCALE	AS SHOWN	
DESIGNED	WH	
DRAWN	MLC	
CHECKED	RR	
NO.	REVISION	DATE