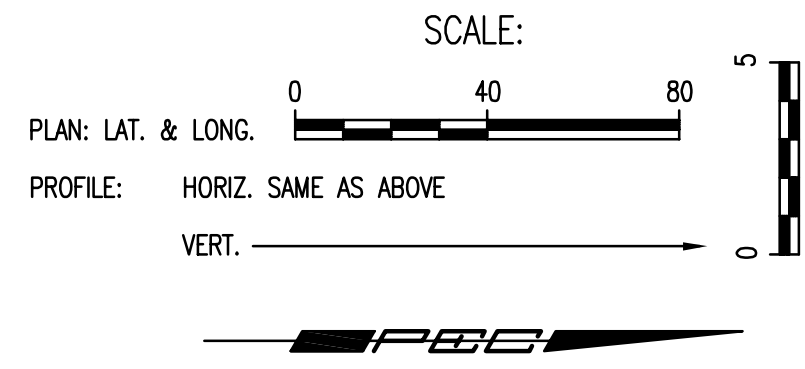
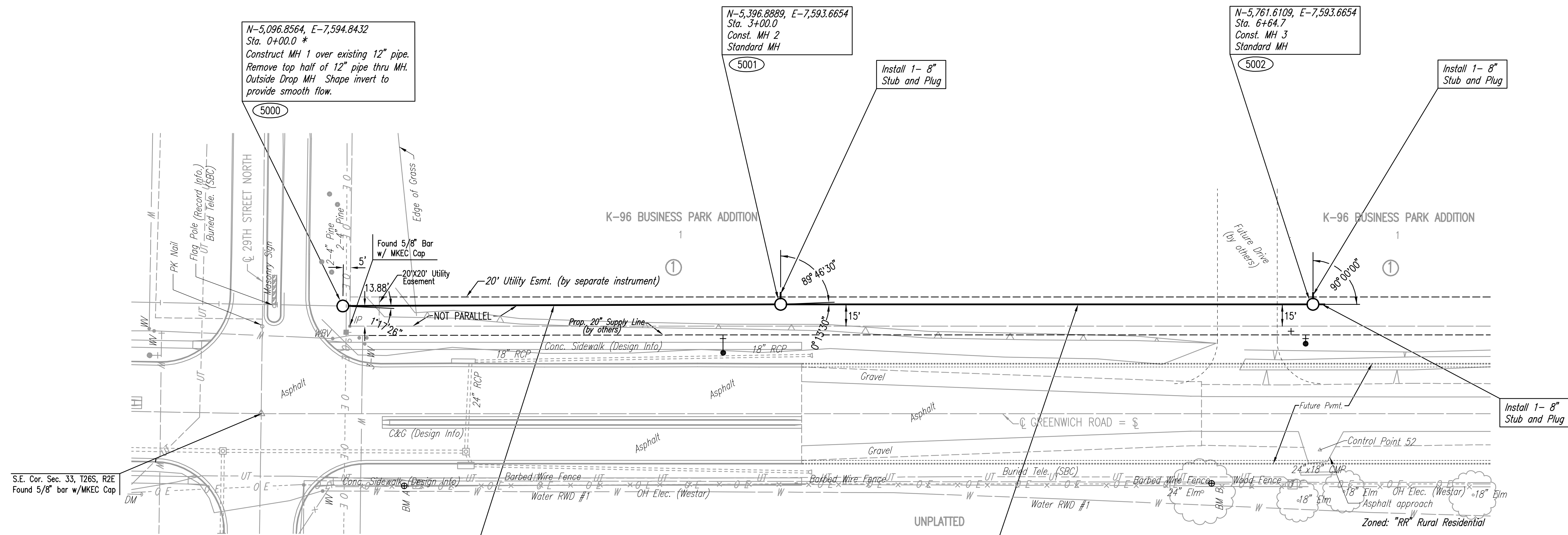


PLAN	CHECKED	CHECKED
BY		
DATE		

PROFILE	CHECKED	CHECKED
BY		
DATE		

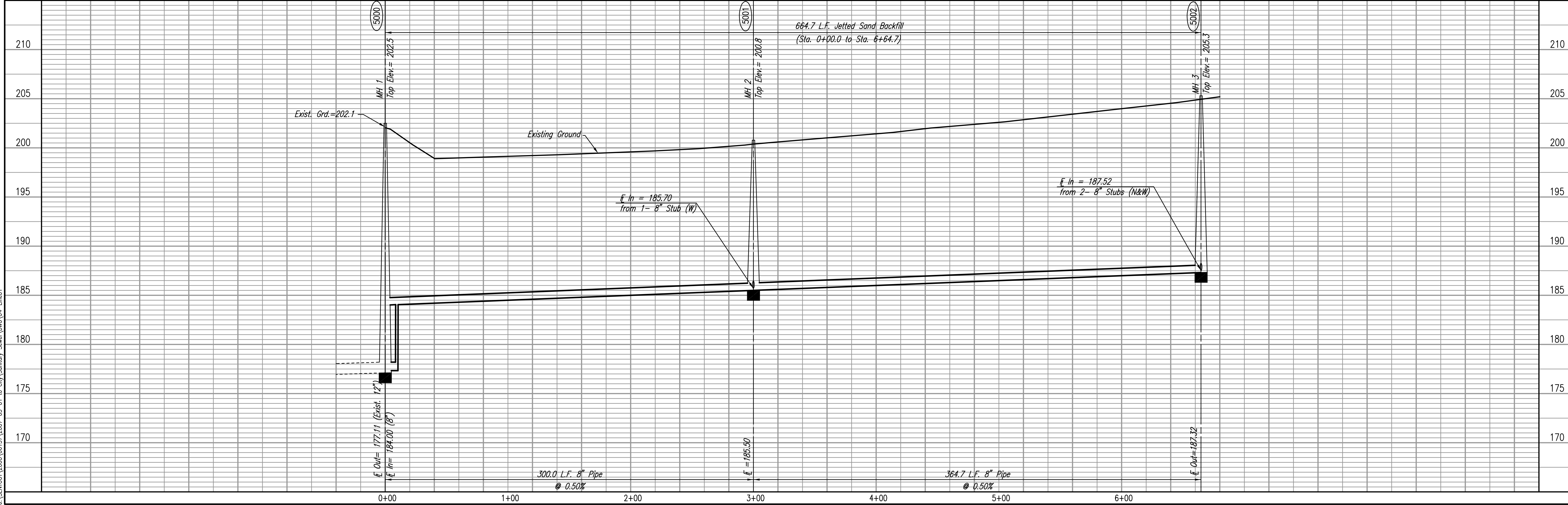


COORDINATE LIST		
POINT	NORTH	EAST
5000	5,096.8564	7,594.8432
5001	5,396.8889	7,593.6654
5002	5,761.6109	7,593.6654

5001 = COORDINATE POINT NO.

* PRIOR TO BEGINNING CONSTRUCTION, THE CONTRACTOR SHALL EXCAVATE THE EXISTING 12" PIPE AT SANITARY SEWER STATION 0+00.0 TO VERIFY ITS HORIZONTAL AND VERTICAL LOCATION. THE PIPE LOCATION SHALL BE REPORTED TO THE ENGINEER SO THAT ANY NECESSARY PLAN MODIFICATIONS CAN BE MADE. ANY ADDITIONAL LABOR OR MATERIALS NECESSARY TO COMPLETE THE CONNECTION SHALL BE CONSIDERED SUBSIDIARY TO THE PROJECT.

SANITARY SEWER LINE NO. 1



Drawn 04-27-2007 3:14:48 PM by JAW
 Plot Scale 1:40 04-30-2007 6:14:56 PM by BEJ
 J:\SEN\01\2006\06137\2007-05-01 to City\Sanitary Sewer\DWG 04-Line01

Professional Engineering Consultants, P.A.
 803 S. TOPICKA AVENUE, WICHITA, KANSAS 67202
 316-262-2691 • FAX 316-262-3008

Designed By MDK
 Drawn By TLS

Job No. 35-06137-000-042
 Date April 2006

K-96 BUSINESS PARK
 LATERAL 8, MAIN 26 OF THE
 WAR INDUSTRIES SEWER

SANITARY SEWER LINE NO. 1

JAMES L. ARMOUR, P.E. - ACTING CITY ENGINEER
 CITY OF WICHITA PROJECT NO. 488-84155

Sheet 4 of 11