

**GENERAL NOTES**

- THE CONTRACTOR SHALL COMPLY WITH ALL APPLICABLE SAFETY REGULATIONS. ALL CONSTRUCTION SHALL BE COMPLETED FOLLOWING CURRENT CITY STANDARD SPECIFICATIONS AND SPECIAL PROVISIONS.
- CONTRACTOR WILL BE REQUIRED TO PROVIDE NOTICE TO UTILITY COMPANIES A MINIMUM OF SEVENTY-TWO (72) HOURS PRIOR TO ANY EXCAVATION, AS FOLLOWS:  
 KANSAS ONE-CALL 687-2470  
 THE CONTRACTOR MUST NOTIFY THE FOLLOWING IN CASE OF AN EMERGENCY:  
 AT&T 1-316-246-8464  
 BLACK HILLS ENERGY (GAS) 1-800-694-8989  
 CITY OF WICHITA WATER & SEWER 1-316-219-8921  
 CITY OF WICHITA STORMWATER 1-316-268-4090  
 CITY OF WICHITA TRAFFIC 1-316-268-4034  
 COX COMMUNICATIONS 1-888-249-3530  
 KANSAS GAS SERVICE 1-888-482-4950  
 EVERGY 1-800-544-4857
- UTILITY SERVICE LINES, POLES, ETC. ARE TO BE ADJUSTED AS NECESSARY BY OTHERS PRIOR TO CONSTRUCTION UNLESS THE PLANS SPECIFICALLY CALL FOR THEIR ADJUSTMENT BY THE CONTRACTOR OR UNLESS THE PLANS SPECIFICALLY IDENTIFY A UTILITY TO BE ADJUSTED BY ITS OWNER DURING CONSTRUCTION. EXISTING UTILITIES AND THEIR LOCATION, AS SHOWN ON THE PLANS, REPRESENT THE BEST INFORMATION OBTAINABLE FOR DESIGN. THE CONTRACTOR WILL BE REQUIRED TO WORK AROUND EXISTING UTILITIES WITHIN THE RIGHT-OF-WAY WHICH DO NOT CONFLICT WITH PROPOSED CONSTRUCTION.
- RUBBLE FROM THE REMOVAL OF MISCELLANEOUS STRUCTURES AND EXCESS EXCAVATION WHICH IS TO BE WASTED SHALL BE DISPOSED OF ON SITES TO BE PROVIDED BY THE CONTRACTOR. THESE SITES SHALL BE APPROVED BY THE ENGINEER AS TO SUITABILITY, APPEARANCE AND SITE LOCATION. LOCATIONS, IN THE OPINION OF THE ENGINEER, THAT WILL LEAVE AN UNSIGHTLY APPEARANCE WILL NOT BE APPROVED. ALL DISPOSAL SITES MUST BE APPROVED BY THE KANSAS DEPARTMENT OF HEALTH AND ENVIRONMENT. MATERIAL EITHER STOCKPILED OR DISPOSED OF IN A FLOOD PLAIN WILL REQUIRE A KANSAS STATE BOARD OF AGRICULTURE PERMIT. ANY MATERIAL DUMPED IN WATERS OF THE UNITED STATES OR WETLANDS IS SUBJECT TO U.S. CORPS OF ENGINEERS PERMITTING REGULATIONS. ANY MATERIAL BURIED OR STOCKPILED BEYOND APPROVED CONSTRUCTION LIMITS WILL REQUIRE ADDITIONAL ARCHAEOLOGICAL INVESTIGATIONS UNLESS BURIED IN A PREVIOUSLY APPROVED BORROW LOCATION.
- TREES AND SHRUBS IN PUBLIC RIGHT-OF-WAY WHICH ARE IN DIRECT CONFLICT WITH PROPOSED NEW CONSTRUCTION SHALL BE REMOVED BY THE CONTRACTOR WITH THE CITY ENGINEER'S APPROVAL. TREES AND SHRUBS WHICH ARE NOT IN DIRECT CONFLICT WITH PROPOSED NEW CONSTRUCTION SHALL BE SAVED AND PROTECTED FROM DAMAGE.
- THE CONTRACTOR SHALL GIVE ALL PROPERTY OWNERS AND/OR TENANTS OF DEVELOPED PROPERTY ADJUTING THE CONSTRUCTION OF THIS PROJECT A MINIMUM OF TEN (10) DAYS NOTICE PRIOR TO START OF CONSTRUCTION.
- THE CONTRACTOR SHALL BE RESPONSIBLE FOR PRESERVING PROPERTY IRONS. THE CONTRACTOR WILL BE REQUIRED TO RE-ESTABLISH ANY PROPERTY IRONS WHICH ARE DAMAGED OR DESTROYED BY HIS CONSTRUCTION OPERATIONS. SUCH IRONS SHALL BE RE-ESTABLISHED BY A LICENSED LAND SURVEYOR IN ACCORDANCE WITH STATE LAWS.
- THE ENGINEERING DIVISION SHALL FIELD LOCATE WATER VALVES ONE TIME DURING CONSTRUCTION WHEN REQUESTED BY THE CONTRACTOR. IT SHALL BE THE CONTRACTOR'S RESPONSIBILITY TO PRESERVE SUCH FIELD LOCATIONS DURING THE CONSTRUCTION PROCESS. WATER VALVES, VALVE BOXES OR FIRE HYDRANTS DAMAGED DURING CONSTRUCTION SHALL BE REPAIRED BY CONTRACTOR AT HIS OWN EXPENSE. VALVE BOXES AND WATER METERS WITHIN THE PROJECT LIMITS SHALL BE ADJUSTED TO MATCH FIELD GRADES BY THE CONTRACTOR.
- THE CONTRACTOR SHALL NOTIFY THE INSPECTING ENGINEER WITH THE CITY OF WICHITA WITH THE ANTICIPATED CONSTRUCTION START DATE AND NOTIFY THEM OF PROJECT COMPLETION. STAKING AND INSPECTION FOR THIS PROJECT WILL BE THE RESPONSIBILITY OF THE CONTRACTOR.
- IF TRAFFIC WILL BE IMPACTED BY CONSTRUCTION, A TRAFFIC CONTROL PLAN MUST BE SUBMITTED AND APPROVED BY THE CITY TRAFFIC ENGINEER, AT [traffic@wichita.gov](mailto:traffic@wichita.gov) BEFORE CONSTRUCTION CAN BEGIN. THE CONTRACTOR SHALL BE RESPONSIBLE FOR ALL TRAFFIC CONTROL MEASURES TO FACILITATE CONSTRUCTION. ALL CONSTRUCTION ZONE MARKINGS AND SIGNAGE SHALL CONFORM TO THE LATEST VERSION OF THE MANUAL ON UNIFORM TRAFFIC CONTROL DEVICES (MUTCD) AS PUBLISHED BY THE US DEPT. OF TRANSPORTATION, FEDERAL HIGHWAY ADMINISTRATION. ALL COSTS ASSOCIATED WITH CONSTRUCTION MARKINGS AND SIGNAGE SHALL BE THE CONTRACTOR'S RESPONSIBILITY.
- ALL AREAS DISTURBED DURING CONSTRUCTION THAT WILL NOT BE UNDER PROPOSED PAVEMENT SHALL BE SEEDED AND MULCHED. COST SHALL BE CONSIDERED SUBSIDIARY TO PROJECT SEEDING.
- CONTRACTOR SHALL LIMIT THE EXTENT OF TRENCH OPEN OVERNIGHT AND WEEKENDS TO LESS THAN 90 FEET.
- EXISTING UTILITIES AND THEIR LOCATION, AS SHOWN ON THE PLANS REPRESENT THE BEST INFORMATION OBTAINABLE FOR DESIGN. LOCATION INFORMATION HAS BEEN OBTAINED FROM THE VARIOUS COMPANIES AND IS EITHER FROM COMPANY UTILITY DRAWINGS OR COMPANY PROVIDED FIELD LOCATIONS. THE PLAN LOCATIONS SHOWN ARE NOT GUARANTEED. ADDITIONAL EXISTING UTILITIES MAY ALSO BE ENCOUNTERED.
- ALL TRAFFIC CONTROL DEVICES IN THE WORK ZONE (INCLUDING MARKINGS AND SIGNS) AND THEIR INSTALLATION AND MAINTENANCE SHALL COMPLY WITH THE LATEST EDITION OF THE MANUAL ON UNIFORM TRAFFIC CONTROL DEVICES (MUTCD). ALL TRAFFIC CONTROL DEVICES IN THE TRAVELED WAY OR CLEAR ZONE SHALL BE CRASHWORTHY (NCHRP REPORT 350 OR MASH COMPLIANT). [https://safety.fhwa.dot.gov/roadway\\_dept/countermeasures/roadway\\_crash\\_severity/](https://safety.fhwa.dot.gov/roadway_dept/countermeasures/roadway_crash_severity/)
- ALL CONSTRUCTION EQUIPMENT, INCLUDING VEHICLES, MATERIALS, AND DEBRIS, SHALL BE STORED OUTSIDE OF THE CLEAR ZONE. WHERE THIS CANNOT BE ACHIEVED THE CONTRACTOR SHALL PLACE APPROPRIATE SIGNS, OBJECT IDENTIFIERS, AND/OR BARRICADES IN COMPLIANCE WITH MUTCD.
- EXCEPT WHEN REQUIRED FOR SAFETY, TRAFFIC CONTROL SHALL NOT BLOCK ANY LANES OR SIDEWALKS WHEN WORK IS NOT BEING PERFORMED.
- THIS PROJECT INCLUDES A CERTAIN AMOUNT OF ROLL TYPE CURB CONSTRUCTION. ROLL CURBS SHALL BE DEPRESSED THROUGH ALL DRIVEWAY OPENINGS WHEN SUCH DRIVES ARE CONSTRUCTED AS A PART OF THE PROJECT. CURBS THAT DRIVES 20 FEET IN WIDTH OR EQUIVALENT COMBINATIONS THEREOF ARE TO BE CONSTRUCTED WITH THIS PROJECT.
- TRANSITION CURB FROM FULL HEIGHT COMBINATION CURB AND GUTTER TO ROLL TYPE COMBINATION CURB AND GUTTER IS TO BE PAID AS BID FOR LINEAL FEET COMBINED CURB AND GUTTER (3 5/8" ROLL).
- A SAW CUT OF AT LEAST ONE-HALF THE DEPTH OF THE EXISTING SURFACE COURSES OR ONE-FOURTH THE DEPTH OF THE EXISTING TOTAL PAVEMENT THICKNESS SHALL BE PROVIDED AT LOCATIONS WHERE PROPOSED CONSTRUCTION ABUTS AN EXISTING SURFACE OR PAVEMENT FOR WHICH PARTIAL REMOVAL OF THAT SURFACE OR PAVEMENT IS REQUIRED. SAW JOINT TO FACILITATE REMOVAL WITHIN THREE (3) FEET OF EXISTING JOINTS WILL NOT BE PERMITTED AND FOR SUCH INSTANCES THE LIMITS OF REMOVAL SHALL EXTEND TO THE EXISTING JOINT. SUCH SAW CUTS WILL NOT BE PAID FOR DIRECTLY AND THIS COST SHALL BE CONSIDERED AS SUBSIDIARY TO THE REMOVAL OF SURFACE OR PAVEMENT.
- FOLLOW THE LINK BELOW FOR CONSTRUCTION DETAILS ON SPECIFIC CITY OF WICHITA STANDARD DETAILS: <http://www.wichita.gov/PWU/Pages/Regulations.aspx>
- DEVELOPER FOR THIS PROJECT IS:  
SCHELLENBERG PROPERTIES, LLC  
7926 WEST 21ST STREET  
WICHITA, KANSAS 67205  
MARVIN L. SCHELLENBERG, MEMEBER  
316-721-2153

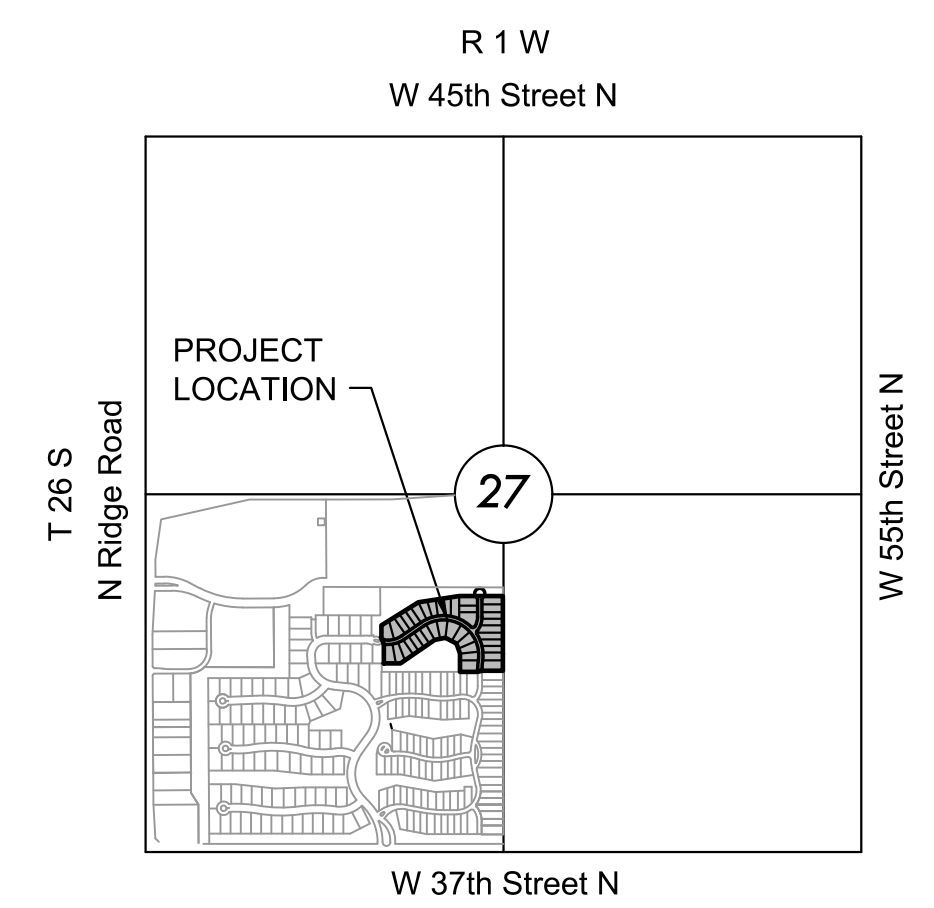
PAVING & INCIDENTAL DRAINAGE FOR  
**ESTANCIA 2ND ADDITION**

PROJECT NO. 472-2019-085560

AN ADDITION TO THE CITY OF WICHITA, SEDGWICK COUNTY, KANSAS  
 GARY JANZEN, P.E. - CITY ENGINEER

OCA NO. 766480

LOTS 6 THROUGH 20, BLOCK 1;  
 LOTS 1 THROUGH 24, BLOCK 2



VICINITY MAP  
 No Scale

**INDEX TO DRAWINGS**

SHEET NO.	DESCRIPTION
01	TITLE
02-07	PAVING DETAILS
08-09	SWS DETAILS
10-13	PAVING PLANS
14-15	SWS LINES 1B & 2B
16	EROSION CONTROL PLAN
17-18	BUBBLE MAP
19-23	BMPS
24-28	CROSS SECTIONS
29	FINAL PLAT

**BENCHMARKS**

**DATUM:**  
 THE HORIZONTAL DATUM IS BASED ON THE KANSAS COORDINATE SYSTEM OF 1983(2011), SOUTH ZONE. COORDINATES SHOWN HAVE BEEN MODIFIED TO THE GROUND USING A COMBINED ADJUSTMENT FACTOR OF 1.0001200144. STATE PLANE COORDINATES CAN BE CALCULATED BY MULTIPLYING THE SHOWN VALUES BY 0.99988.

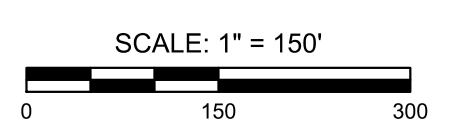
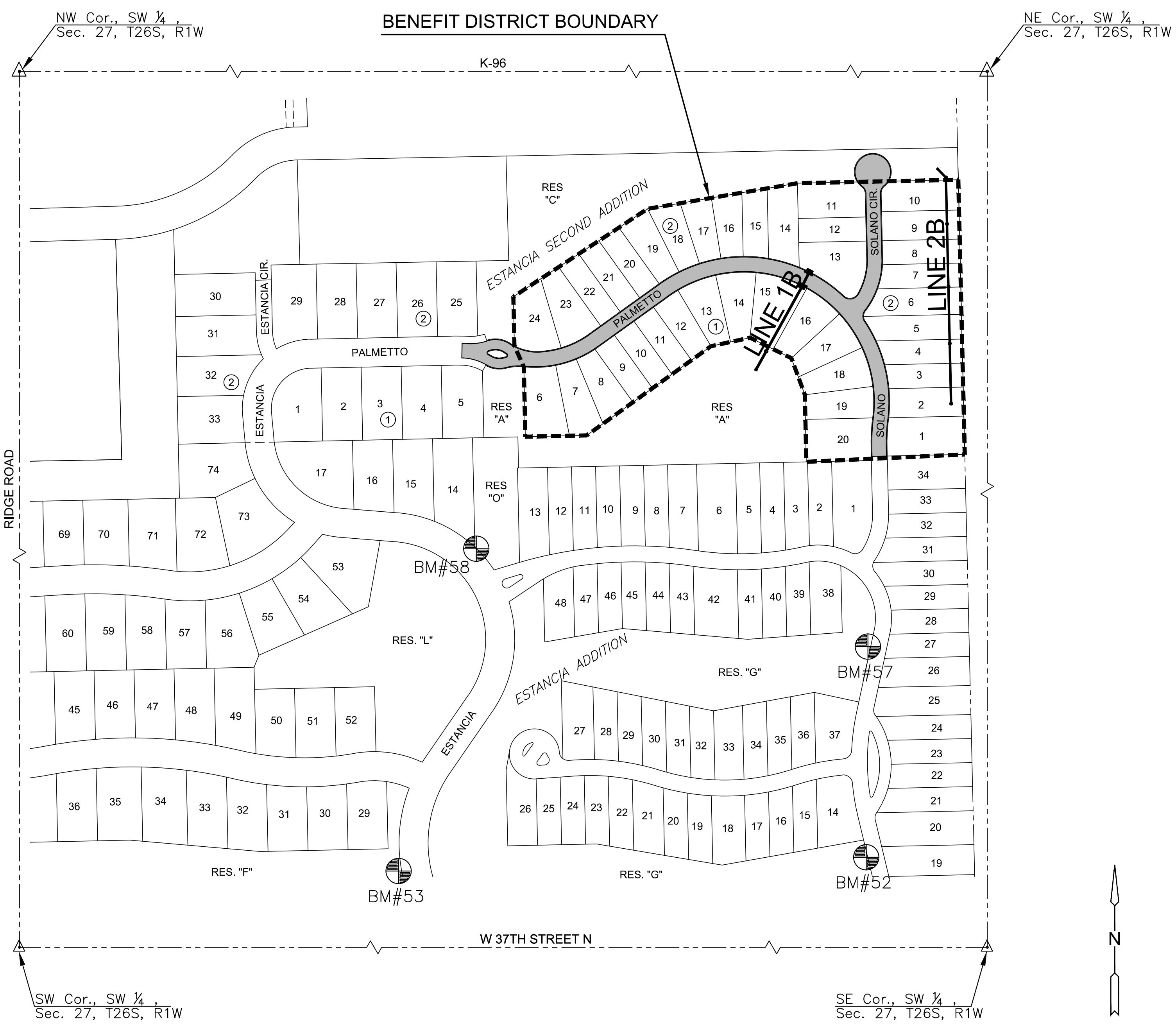
ALL ELEVATIONS SHOWN ARE BASED ON THE NAVD 88 VERTICAL DATUM.

**BM#52** PLUS CUT/SQUARE CUT AT SOUTHWEST CORNER OF CURB INLET WEST SIDE OF SOLANO ST. 600 FEET NORTH OF 37<sup>TH</sup> ST. N., 28 FEET NORTH OF NORTH EDGE OF PARKING STALLS.  
 NORTHING = 1710171.016 EASTING = 1625356.019  
 ELEV. = 1334.12' NAVD 88

**BM#53** PLUS CUT ON CITY OF WICHITA DISC AT TOP OF CURB, WEST SIDE OF ESTANCIA STREET, THREE FEET SOUTH OF CURB INLET, 600 FEET NORTH OF MAIN ENTRANCE AT 37TH ST. N.  
 NORTHING = 1710142.067 EASTING = 1624443.448  
 ELEV. 1333.50' NAVD 88

**BM#57** PKN AND WASHER DRILLED INTO TOP OF CURB AT NORTHWEST CORNER OF 8 CAR PARKING BAY ON EAST SIDE OF CLUB HOUSE WEST SIDE OF SOLANO ST.  
 NORTHING = 1710607.21 EASTING = 1625354.12  
 ELEV. 1334.48' NAVD 88

**BM#58** PKN AND WASHER DRILLED INTO NORTHEAST CORNER OF CURB INLET, EAST SIDE OF ESTANCIA ST., 70 FEET NORTH OF COLLINA ST.  
 NORTHING = 1710769.55 EASTING = 1624579.04  
 ELEV. 1333.63' NAVD 88



**PROJECT LENGTH**

PALMETTO	860 L.F.
SOLANO	300 L.F.
SOLANO CIRCLE	300 L.F.



PAVING & INCIDENTAL DRAINAGE FOR  
**ESTANCIA 2ND ADDITION**  
 PHASE 1

©2019 MKEC Engineering All Rights Reserved  
 These drawings and their contents, including, but not limited to, all concepts, designs, & ideas are the exclusive property of MKEC Engineering (MKEC), and may not be used or reproduced in any way without the express consent of MKEC.

**TITLE**

PROJECT NO.	472-2019-085560	
DATE	DEC 2019	
SCALE	1" = 150'	
DESIGNED	DRAWN	CHECKED
DFL	JWC	GJA

NO.	REVISION	DATE

SHEET NO.  
 01 OF 29

J:\PROJECTS\2019\1910010238\_ESTANCIA\_SECOND\_19338\_CAD\SHS\05 CIVIL\PAV\PH1\19338-05-5000.DWG  
 PLOTTED: Friday, December 20, 2019 @ 03:41PM