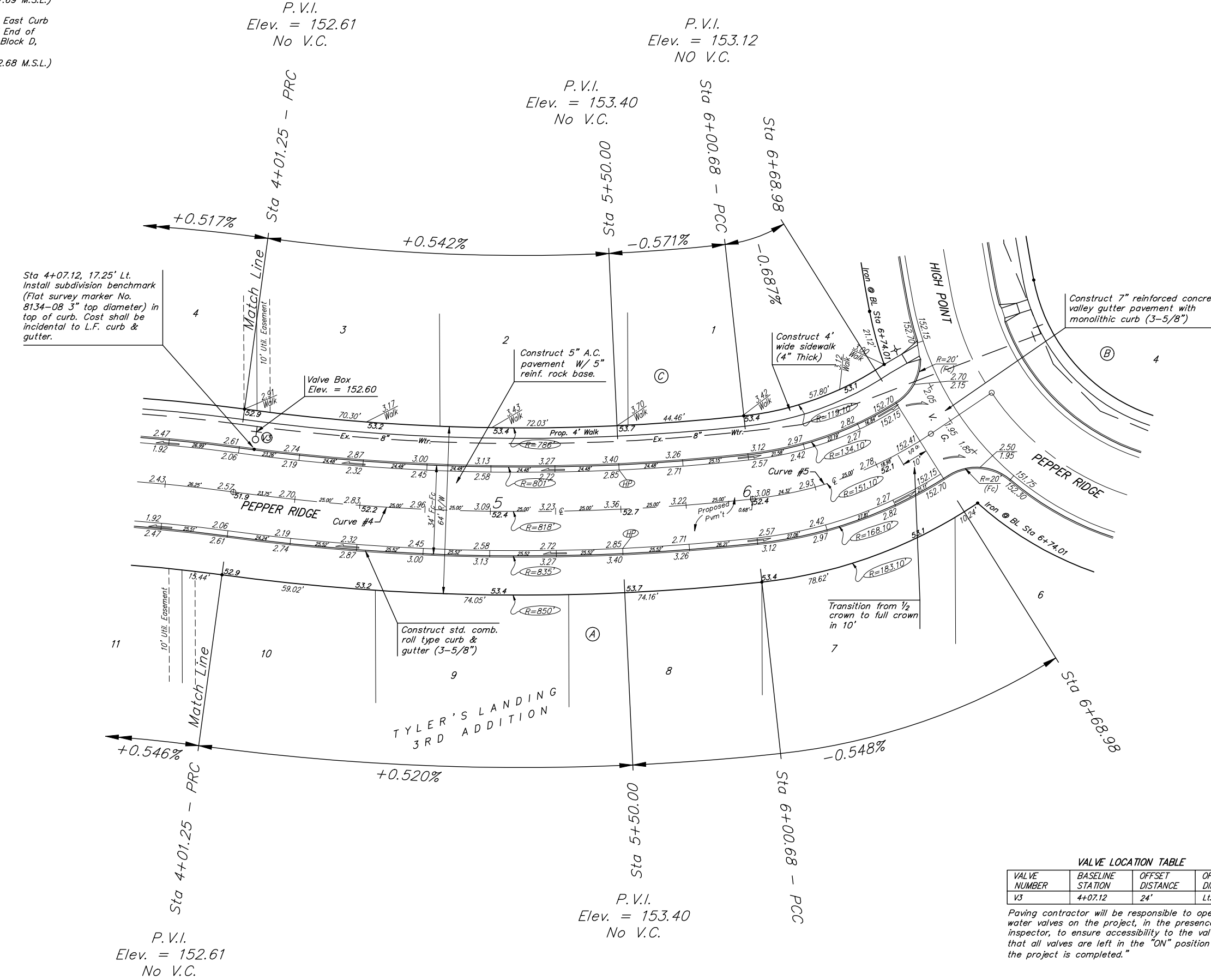


Benchmarks:
 BM #1: "□" Cut in Middle of Curb
 Inlet Top, North Curb of Convey,
 Adjacent to SW Corner of Lot 14,
 Block A, Tyler's Landing 3rd Addition.
 Elev. = 150.29 (1337.69 M.S.L.)

BM #2: "□" Cut in Top of East Curb
 of High Point, 10' South of End of
 Return. Adjacent to Lot 1, Block D,
 Tyler's Landing Addition.
 Elev. = 155.28 (1342.68 M.S.L.)

Scale: 1" = 20'
 • = Iron



Curve #4
 Curve Data Based on Centerline
 Rad. = 818' Delta = 133°08' Tangent = 100.21'
 Arc = 199.43' L.C. = 198.94' Def./Ft. = 2.10132 Min.

| Station | Arc | Face Chord Lengths | | Defl. | Total Defl. |
|---------|--------|--------------------|----------|----------|-------------|
| | | B' Left | B' Right | | |
| 4+01.25 | - | - | - | 0'00"00" | 0'00"00" |
| 4+25.00 | 23.75' | 23.02' | 24.48' | 0'49"54" | 0'49"54" |
| 4+50.00 | 25.00' | 24.24' | 25.76' | 0'52"32" | 1'42"26" |
| 4+75.00 | 25.00' | 24.24' | 25.76' | 0'52"32" | 2'34"58" |
| 5+00.00 | 25.00' | 24.24' | 25.76' | 0'52"32" | 3'27"30" |
| 5+25.00 | 25.00' | 24.24' | 25.76' | 0'52"32" | 4'20"02" |
| 5+50.00 | 25.00' | 24.24' | 25.76' | 0'52"32" | 5'12'34" |
| 5+75.00 | 25.00' | 24.24' | 25.76' | 0'52"32" | 6'05'06" |
| 6+00.00 | 25.00' | 24.24' | 25.76' | 0'52"32" | 6'57'38" |
| 6+00.68 | 0.68' | 0.66' | 0.70' | 0'01"26" | 6'59'04" |

Curve #5
 Curve Data Based on Centerline
 Rad. = 151.1' Delta = 253°51' Tangent = 34.74'
 Arc = 68.30' L.C. = 67.72' Def./Ft. = 11.37518 Min.

| Station | Arc | Face Chord Lengths | | Defl. | Total Defl. |
|---------|--------|--------------------|----------|----------|-------------|
| | | B' Left | B' Right | | |
| 6+00.68 | - | - | - | 0'00"00" | 0'00"00" |
| 6+25.00 | 24.32' | 20.27' | 28.31' | 4'36"39" | 4'36"39" |
| 6+50.00 | 25.00' | 20.84' | 29.10' | 4'44"22" | 9'21"01" |
| 6+68.98 | 18.98' | 15.83' | 22.10' | 3'35"55" | 12'56"56" |

NOTE: ROLL TYPE CURB & GUTTER TO BE CONSTRUCTED ON THE PAVEMENT SHOWN ON THIS SHEET. TOP OF CURB ELEVATIONS ARE GIVEN FOR FULL HEIGHT CURB.

VALVE LOCATION TABLE

| VALVE NUMBER | BASELINE STATION | OFFSET DISTANCE | OFFSET DIRECTION |
|--------------|------------------|-----------------|------------------|
| V3 | 4+07.12 | 24' | Lt. |

Paving contractor will be responsible to operate all water valves on the project, in the presence of the inspector, to ensure accessibility to the valves, and that all valves are left in the "ON" position when the project is completed.

Baughman Tyler's Landing 3rd Addition - Phase 2
Pepper Ridge
 STA 4+01.25 TO STA 6+68.98

PROJECT NUMBER: 472-84262
 DESIGN: RDM/ABG
 DRAWN: RDM
 APPROVED: ABG
 DATE: 4-25-07
 SCALE: Noted
 SHEET: 7 OF 22

Tyler's Landing 3rd Phase 2\STR\STR1.dwg 06-01-E454