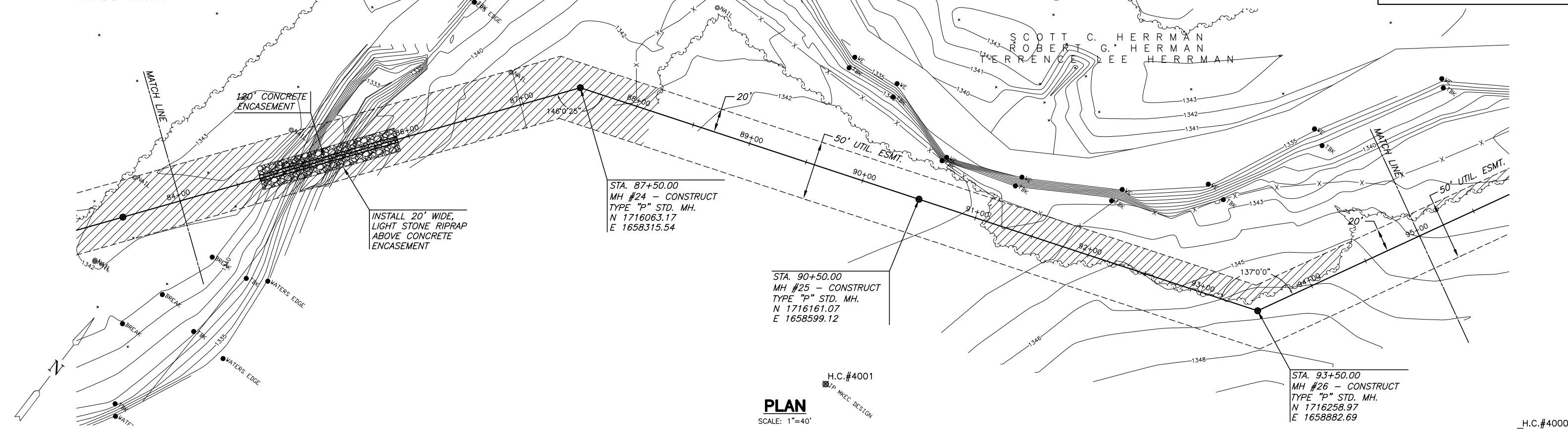


H.C.#4000 5/8" Bar with Red "MKEC Design Point" Cap
N=1716252.43 E=1659217.15

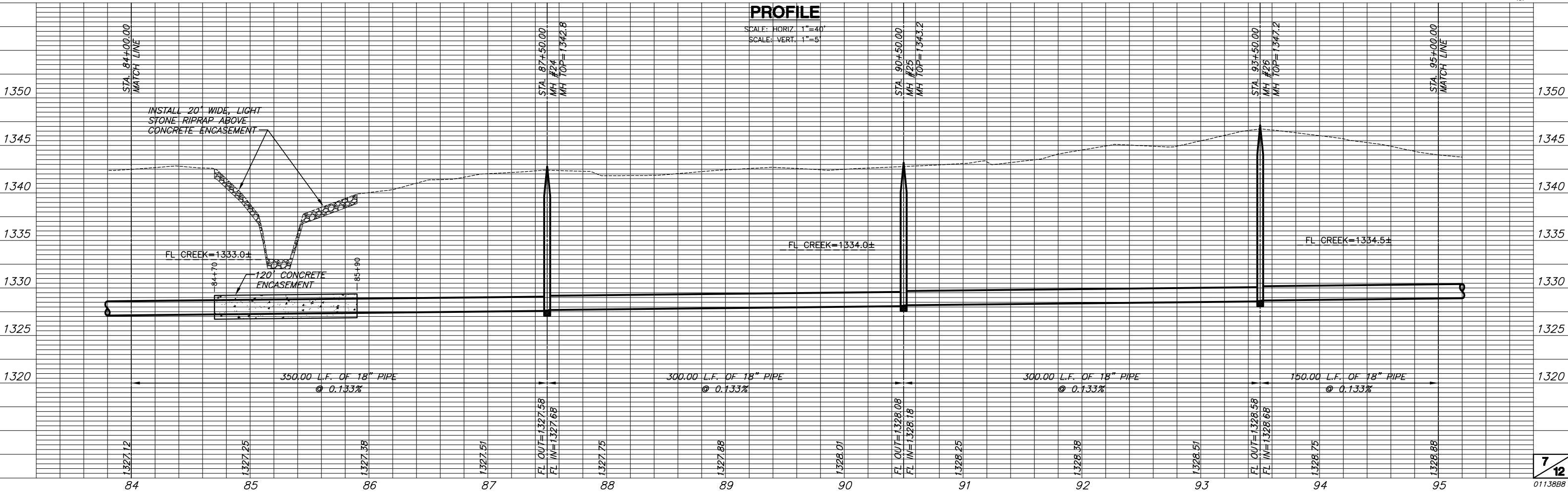
H.C.#4001 5/8" Bar with Red "MKEC Design Point" Cap
N=1715989.82 E=1658630.93

REMOVE TREES AS NECESSARY
WITH ENGINEER'S APPROVAL

**MAIN 13, SS #23
(PHASE 2)
PLAN & PROFILE**



PLAN
SCALE: 1"=40'



PROFILE
SCALE: HORIZ. 1"=40'
SCALE: VERT. 1"=5'

H.C.#4000