

FOUR CORNER PLAN
PRAIRIE POINTE
 AN ADDITION TO WICHITA, SEDGWICK COUNTY, KANSAS

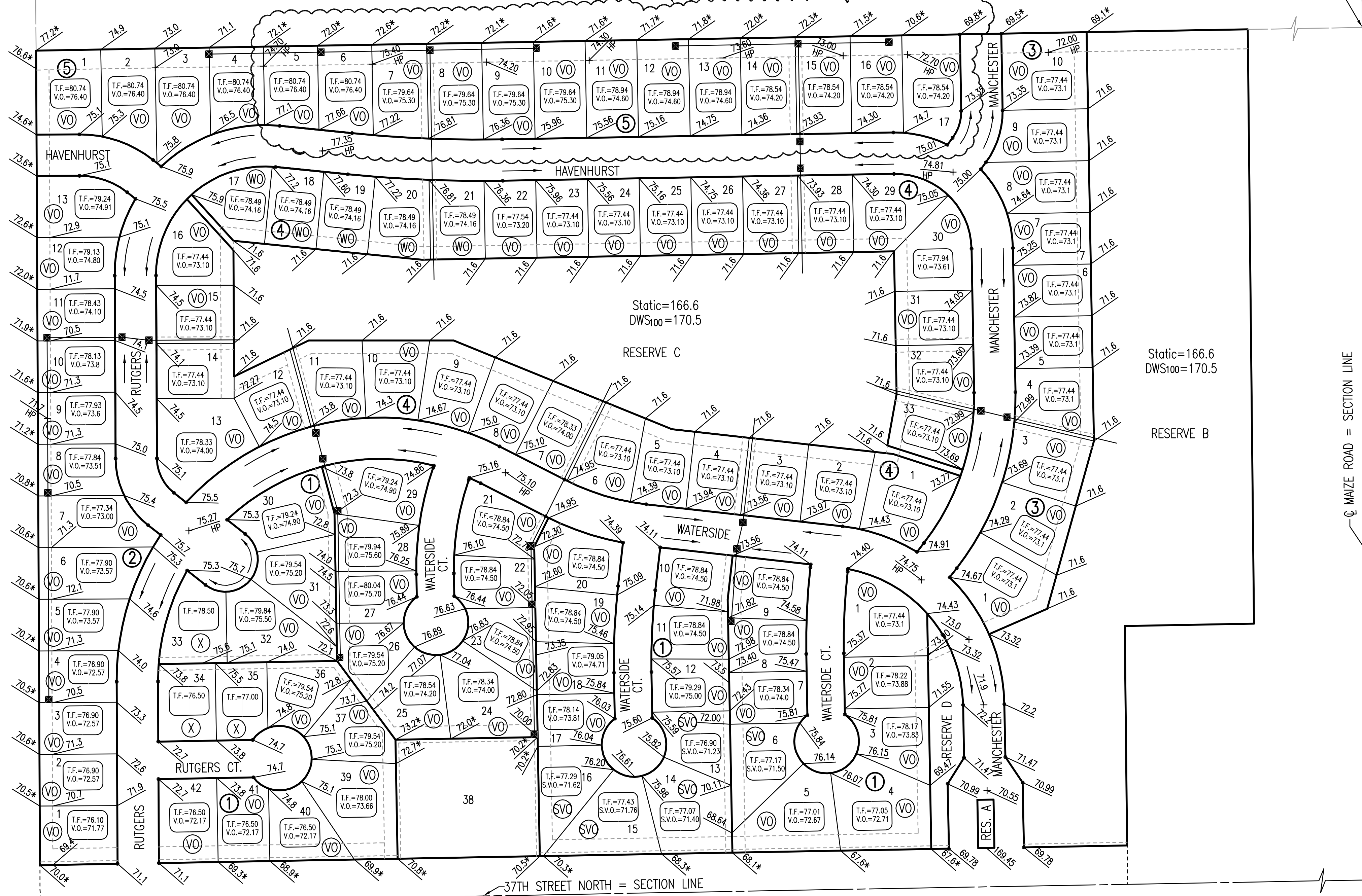
Center of
 Sec. 30, T26S, R1W
 Found Stone 30" Deep
 Reset 3/4" Pipe
 w/PEC Cap

AREA REPLATTED AS:
 PRAIRIE POINTE 2ND, AN ADDITION TO
 WICHITA, SEDGWICK COUNTY, KANSAS.

E 1/4 Corner, Sec. 30
 Twp. 26S, R1W
 Found #4 Bar w/ Moehring
 Cap

N.E. Cor., SE 1/4, SE 1/4
 Sec. 30, T26S, R1W
 No Monument Found

| BLOCK | ELEVATION (N.G.V.D.) | CITY DATUM |
|------------------------|----------------------|------------|
| BLOCK 1 | | |
| LOTS 4-6, 13-16, 40-42 | 1359.0 | 171.6 |
| LOT 39 | 1360.0 | 172.6 |
| LOTS 1-3, 7, 17, 24 | 1360.5 | 173.1 |
| LOTS 8-12, 18-23 | 1361.9 | 174.5 |
| LOT 25 | 1361.6 | 174.2 |
| LOTS 28-30 | 1362.3 | 174.9 |
| LOTS 26-27, 31-37 | 1362.6 | 175.2 |
| BLOCK 2 | | |
| LOTS 1-6 | 1359.0 | 171.6 |
| LOTS 7-10 | 1360.0 | 172.6 |
| LOTS 11-12 | 1361.0 | 173.6 |
| BLOCK 3 | | |
| LOTS 1-10 | 1360.5 | 173.1 |
| BLOCK 4 | | |
| LOTS 1-33 | 1360.5 | 173.1 |
| BLOCK 5 | | |
| LOTS 14-17 | 1361.6 | 174.2 |
| LOTS 11-13 | 1362.0 | 174.6 |
| LOTS 7-10 | 1362.7 | 175.3 |
| LOTS 1-6 | 1363.8 | 176.4 |



- LEGEND**
- (X) STD. BASEMENT
 - (WO) WALK-OUT BASEMENT
 - (VO) VIEW-OUT BASEMENT
 - STORM WATER FLOW
 - 158.0 SPOT ELEVATION (PROPOSED)
 - 158.0* SPOT ELEVATION (MATCH EXISTING)
 - W.O. WALK-OUT
 - V.O. VIEW-OUT
 - T.F. TOP OF FOUNDATION

SCALE: 1" = 100'

REVISED NOVEMBER 14, 2006
 REVISED JULY 13, 2005
 REVISED JUNE 7, 2005
 REVISED MAY 1, 2007

Sowed 05-01-2007 2:07:16 PM by BEJ
 Plot Scale 1:100 05-02-2007 12:19:31 PM by BEJ
 J:\SENYOU\2006\06563\2007-05-01 to City Street\DWG\05-4CORNER

S.W. Cor. SE1/4 of
 Sec. 30, Twp. 26S, R1W
 Found 1" Iron Pipe

S.E. Corner
 Sec. 30, T26S, R1W
 Found 1/2" Rebar
 w/ Moehring Cap

| No. | Revision | By | Date |
|--|----------|---------|---------------|
| PRAIRIE POINTE-PHASE 3 | | | |
| 4-CORNER LOT GRADING PLAN | | | |
| (FOR INFORMATION ONLY) | | | |
| JAMES L. ARMOUR, P.E.-CITY ENGINEER CITY OF WICHITA PROJECT NO. 472-84043 | | | |
| Professional Engineering Consultants, P.A. | | | |
| 303 S. TOPKA • WICHITA, KANSAS 67202 316-262-2691 • FAX 316-262-3003 | | | |
| Designed by | BDB, BMM | Job No. | 35-06563-000 |
| Drawn by | BJS, TAT | Date | October 2006 |
| | | | Sheet 5 of 56 |

