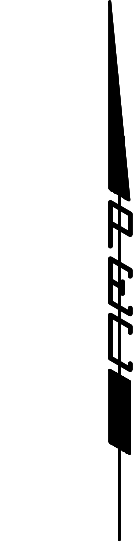
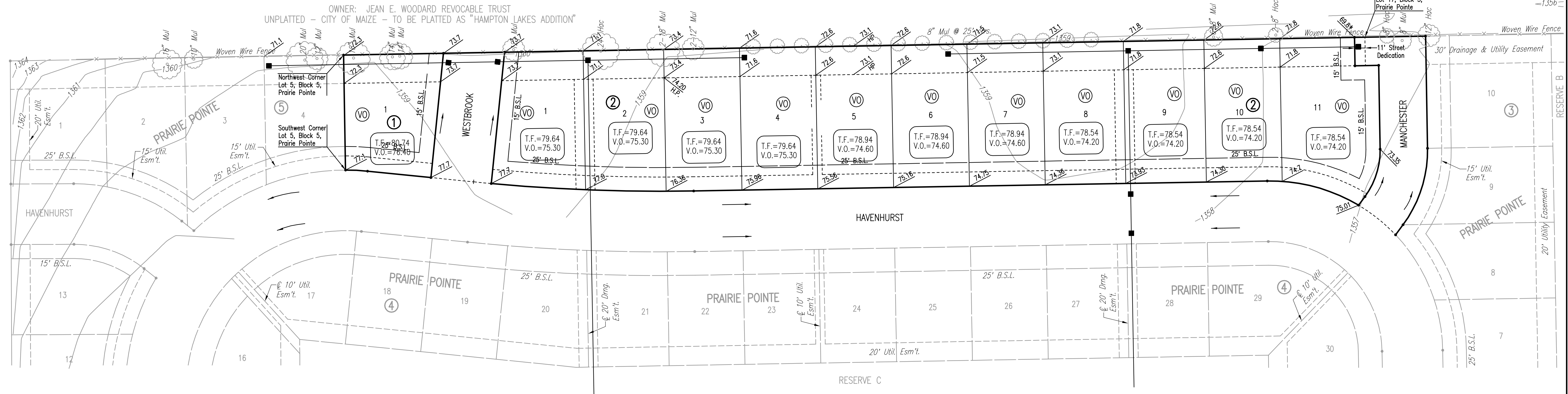


FOUR-CORNER PLAN PRAIRIE POINTE 2ND

AN ADDITION TO WICHITA, SEDGWICK COUNTY, KANSAS

OWNER: JEAN E. WOODARD REVOCABLE TRUST
UNPLATTED - CITY OF MAIZE - TO BE PLATTED AS "HAMPTON LAKES ADDITION"

OWNER: JEAN E. WOODARD REVOCABLE TRUST
UNPLATTED - CITY OF MAIZE - TO BE PLATTED AS "HAMPTON LAKES ADDITION"



SCALE: 1" = 50'
• = 1/2" REBAR WITH PEC CAP UNLESS OTHERWISE NOTED
B.S.L. = BUILDING SETBACK LINE

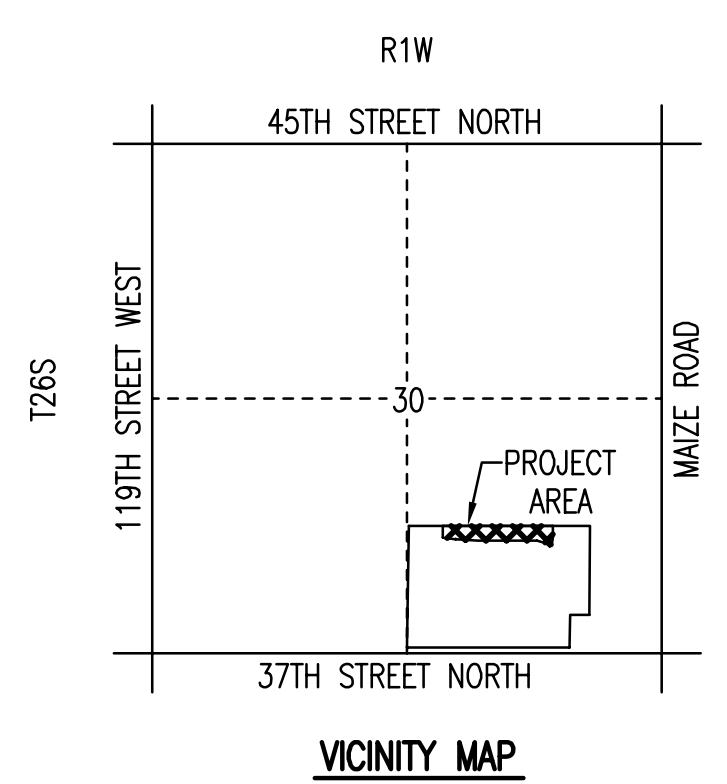
- BENCHMARKS:**
- BM 21-A CHISELED SQUARE ON NORTH END 30"x19" RCP ON WEST SIDE OF TRIPLE PIPE AT THE NORTHWEST CORNER OF 37TH ST. NORTH AND MAIZE ROAD. ELEV. = 1354.18 N.G.V.D. (166.78 CITY DATUM)
 - BM 21-C STEP NAILS ON NORTH FACE OF CORNER POST ON SOUTH SIDE OF 37TH ST. NORTH 950± WEST OF 37TH ST. NORTH AND MAIZE ROAD. ELEV. = 1356.24 N.G.V.D. (168.84 CITY DATUM)
 - BM 21-D CHISELED SQUARE ON CONCRETE BASE OF BRICK FENCE POST ON SOUTH SIDE OF 37TH ST. NORTH 1070± EAST OF 1/2 MILE LINE. ELEV. = 1355.56 N.G.V.D. (168.16 CITY DATUM)
 - BM 21-E CHISELED SQUARE ON CONCRETE BASE OF BRICK FENCE POST ON SOUTH SIDE OF 37TH ST. NORTH 440± EAST OF 1/2 MILE LINE. ELEV. = 1357.01 N.G.V.D. (169.61 CITY DATUM)

MINIMUM PAD ELEVATIONS (LOWEST OPENING) SHALL BE AS FOLLOWS:

BLOCK	ELEVATION (N.G.V.D.)	City Datum
BLOCK 1		
LOT 1	1363.8	176.4
BLOCK 2		
LOTS 1-4	1362.7	175.3
LOTS 5-7	1362.0	174.6
LOTS 8-11	1361.6	174.2

- LEGEND**
- (V.O.) VIEW-OUT BASEMENT
 - STORM WATER FLOW
 - 136.0 SPOT ELEVATION (PROPOSED)
 - V.O. VIEW-OUT
 - T.F. TOP OF FOUNDATION

VO OR WO WAS CONSIDERED ACCEPTABLE IF THE TOP OF FOUNDATION WAS 5' OR LESS ABOVE THE PROPOSED FINISH GRADE LINE.



Saved: 05-01-2007 7:52:20 AM by: REJ
 Plot Scale: 1/50 05-02-2007 12:19:02 PM by: REJ
 J:\SENTOUT\2006\06563\2007-05-01 to City\Street\DWG\06-4-CORNER REPLAT

No.	Revision	By	Date
PRAIRIE POINTE-PHASE 3			
4-CORNER LOT GRADING PLAN			
(FOR INFORMATION ONLY)			
JAMES L. ARMOUR, P.E.-CITY ENGINEER CITY OF WICHITA PROJECT NO. 472-84043			
Professional Engineering Consultants, P.A.			
303 S. TOPEKA • WICHITA, KANSAS 67202 316-262-2691 • FAX 316-262-3003			
Designed by	BDB, BMM	Job No.	35-06563-000
Drawn by	BJS, TAT	Date	October 2006
			Sheet 6 of 56