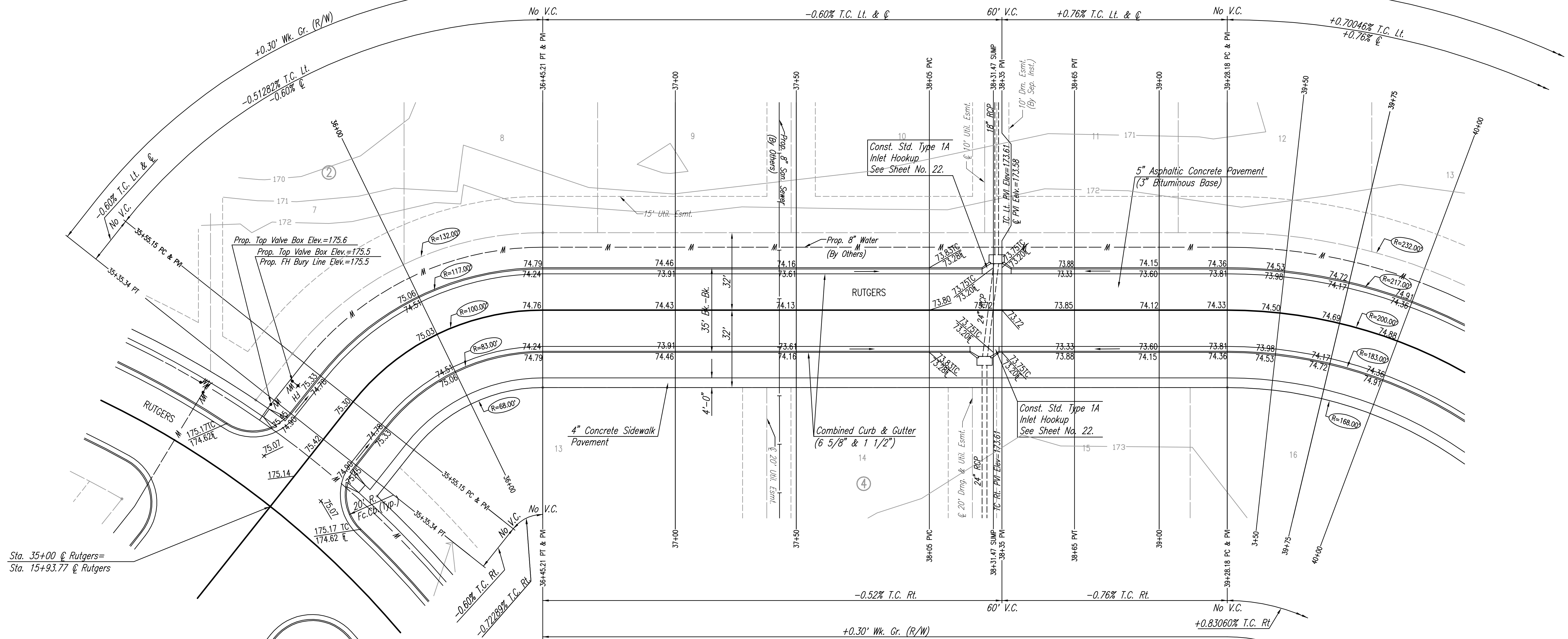


WATER VALVE BOX ELEVATIONS			
STREET	STATION	OFFSET	PROPOSED ELEVATION
RUTGERS	35+33.17	26.0' Lt.	175.6
RUTGERS	35+46.20	25.0' Lt.	175.5



+0.30' Wk. Gr. (R/W)



Sta. 35+00 @ Rutgers=
Sta. 15+93.77 @ Rutgers

Q CURVE DATA
A=51°36'4"R D=57' 17" 44.8" R=100.00' L=90.06' T=48.34' E=11.02'
CURVE DATA BASED ON Q radius Δ/2= 25° 48' 2"

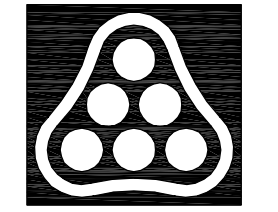
Q STATION	Q ARC LENGTH	FACE CURB LENGTH		CHORD LENGTH		DEFLECTION ANGLE	Q TOTAL DEFLECTION
		LEFT CURB	RIGHT CURB	8' OFF LEFT FACE CURB	8' OFF RIGHT FACE CURB		
35+55.15	19.85'	23.22'	16.48'	24.77'	14.86'	0°00'00.0"	0°00'00.0"
35+75.00	25.00'	29.25'	20.75'	31.17'	18.70'	0°09'43.1"	12°50'54.9"
36+00.00	25.00'	29.25'	20.75'	31.17'	18.70'	0°09'43.1"	20°00'38.0"
36+45.21	20.21'	23.65'	16.78'	25.22'	15.13'	05°47'23.1"	25°48'02.1"
TOTAL	90.06'	105.37'	74.75'				

Defl./ft. = 17.188734 min.

Q CURVE DATA
A=96°2'32"R D=28' 38" 52.4" R=200.00' L=335.25' T=222.29' E=99.02'
CURVE DATA BASED ON Q radius Δ/2= 48° 1' 16"

Q STATION	Q ARC LENGTH	FACE CURB LENGTH		CHORD LENGTH		DEFLECTION ANGLE	Q TOTAL DEFLECTION
		LEFT CURB	RIGHT CURB	8' OFF LEFT FACE CURB	8' OFF RIGHT FACE CURB		
39+28.18						0°00'00.0"	0°00'00.0"
39+50.00	21.82'	23.67'	19.97'	24.54'	19.08'	03°07'31.8"	03°07'31.8"
39+75.00	25.00'	27.12'	22.88'	28.11'	21.86'	03°34'51.6"	06°42'23.3"
40+00.00	25.00'	27.12'	22.88'	28.11'	21.86'	03°34'51.6"	10°17'14.9"
40+25.00	25.00'	27.12'	22.88'	28.11'	21.86'	03°34'51.6"	13°52'06.4"
40+32.09	7.09'	7.69'	6.49'	7.98'	6.20'	01°00'56.0"	14°53'02.5"
40+50.00	17.91'		16.39'		15.67'	02°33'55.5"	17°26'58.0"
40+63.44	13.44'		12.30'		11.76'	01°53'30.5"	19°22'28.5"
40+75.00	11.56'		10.58'		10.11'	01°39'21.1"	21°01'49.6"
40+94.78	19.78'		18.10'		17.30'	02°49'59.8"	23°51'49.4"
41+00.00	5.22'	5.66'	4.78'	5.87'	4.57'	00°44'51.8"	24°36'41.1"
41+25.00	25.00'	27.12'	22.88'	28.11'	21.86'	03°34'51.6"	28°11'32.7"
41+50.00	25.00'	27.12'	22.88'	28.11'	21.86'	03°34'51.6"	31°46'24.2"
41+75.00	25.00'	27.12'	22.88'	28.11'	21.86'	03°34'51.6"	35°21'15.8"
42+00.00	25.00'	27.12'	22.88'	28.11'	21.86'	03°34'51.6"	38°56'07.4"
42+25.00	25.00'	27.12'	22.88'	28.11'	21.86'	03°34'51.6"	42°30'58.9"
42+50.00	25.00'	27.12'	22.88'	28.11'	21.86'	03°34'51.6"	46°05'50.5"
42+63.43	13.43'	14.57'	12.29'	15.11'	11.75'	01°55'25.3"	48°01'16.1"
TOTAL	335.25'	295.67'	306.75'				

Defl./ft. = 8.594367 min.



No.	Revision	By	Date
PRAIRIE POINTE—PHASE 3 RUTGERS STA. 35+00 TO STA. 40+00 JAMES L. ARMOUR, P.E.—CITY ENGINEER CITY OF WICHITA PROJECT NO. 472-84043 Professional Engineering Consultants, P.A. 303 S. TOPEKA • WICHITA, KANSAS 67202 316-262-2691 • FAX 316-262-3003			
Designed by	BDB, BMM	Job No.	35-06563-000
Drawn by	BJS, TAT	Date	October 2006
			Sheet 12 of 56

Sowed 05-01-2007 6:10:14 PM by BEJ
 Plot Scale 1:20 05-02-2007 12:16:41 PM by BEJ
 J:\SEN\001\2006\06563\2007-05-01 to City\Street\DWG\12-STR RUTGERS