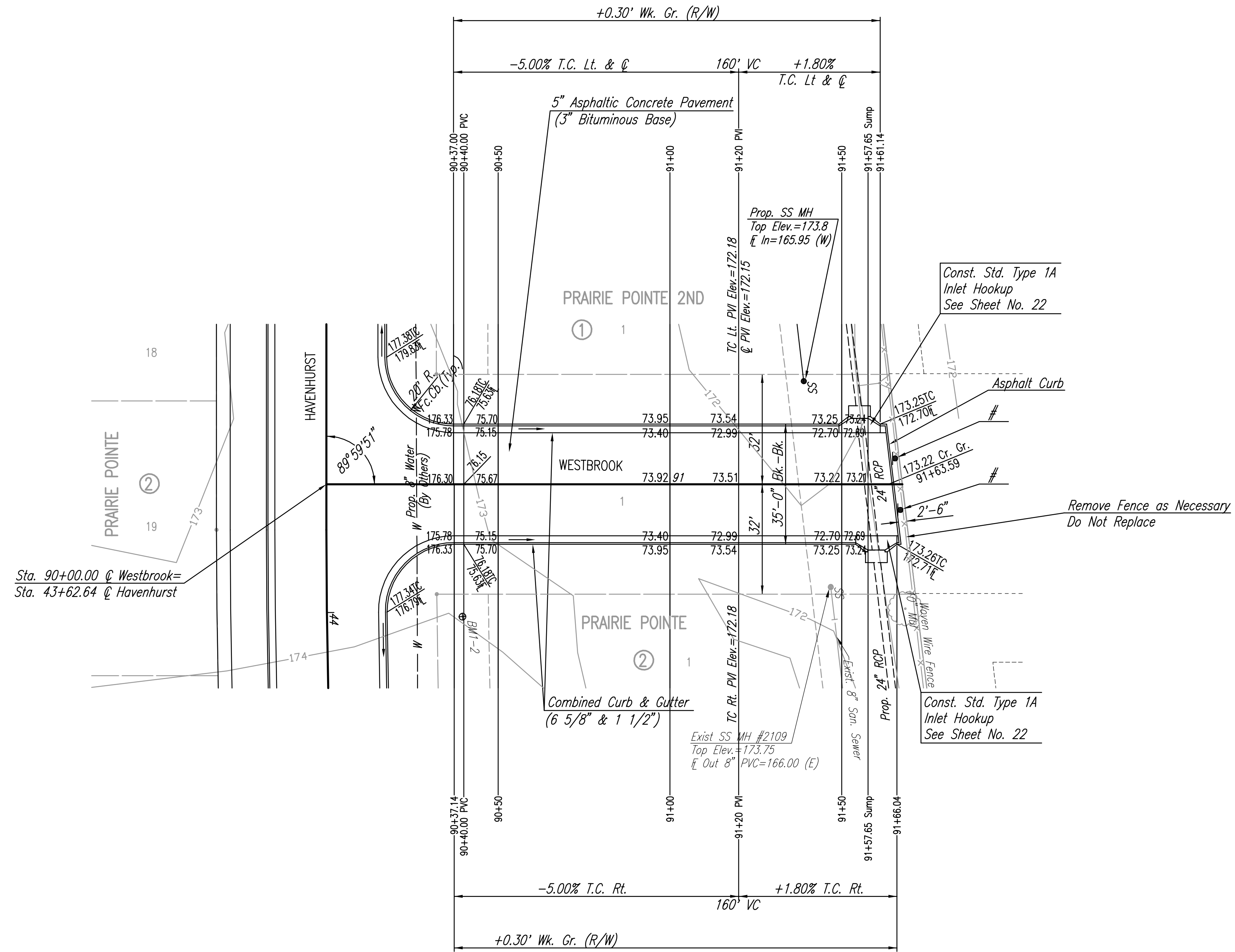


Saved: 05-01-2007 6:16:52 PM by BJS
 Plot Scale: 1:20 05-02-2007 12:14:57 PM by BEJ
 J:\SEN\001\2006\06563\2007-05-01 to City\Street\DWG\16-STR WESTBROOK



No.	Revision	By	Date
PRAIRIE POINTE-PHASE 3 WESTBROOK STA. 90+00.00 TO STA. 91+66.04 JAMES L. ARMOUR, P.E.-CITY ENGINEER CITY OF WICHITA PROJECT NO. 472-84043 Professional Engineering Consultants, P.A. 303 S. TOPEKA • WICHITA, KANSAS 67202 316-262-2691 • FAX 316-262-3003			
Designed by	BDB, BMM	Job No.	35-06563-000
Drawn by	BJS, TAT	Date	October 2006
			Sheet 16 of 56