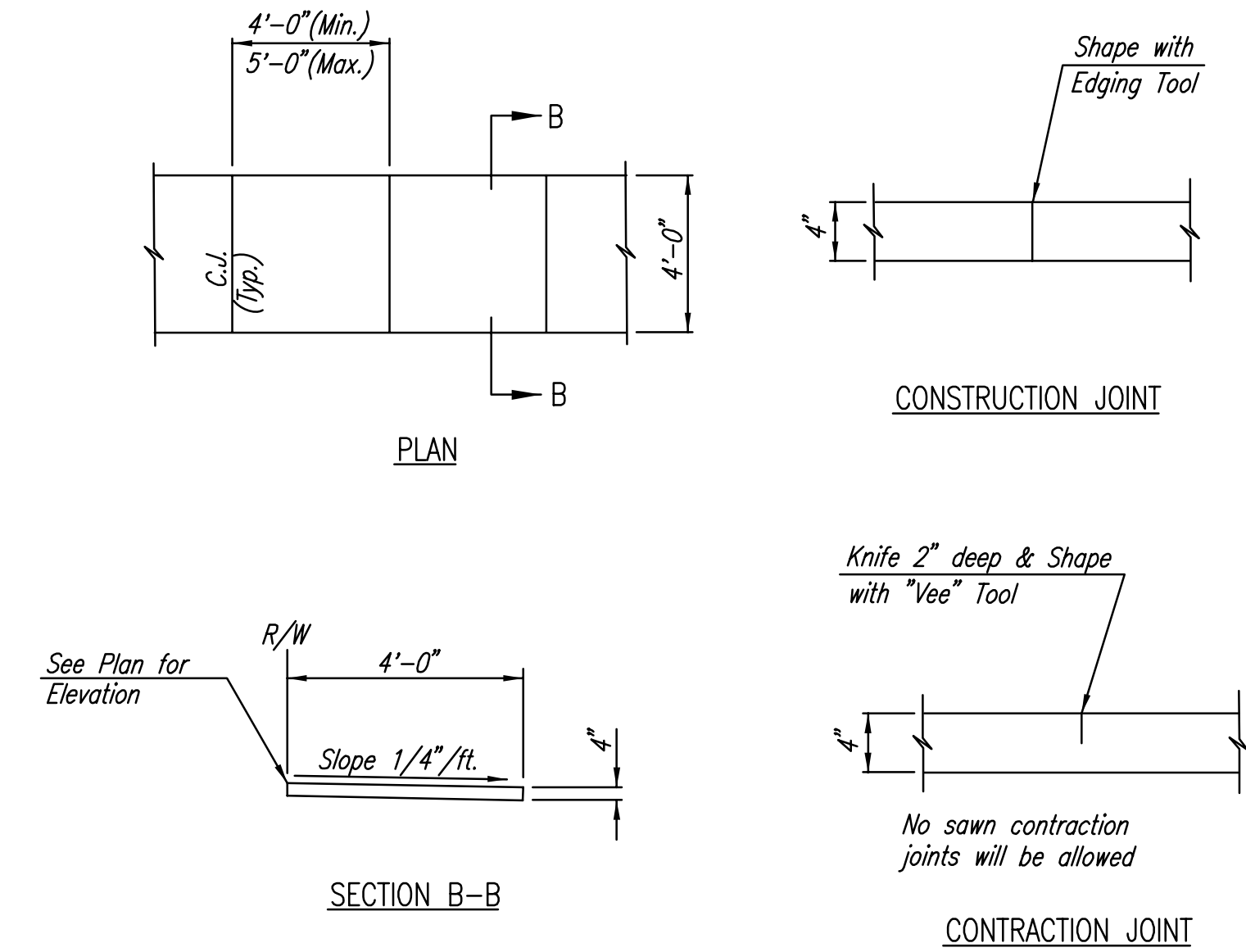
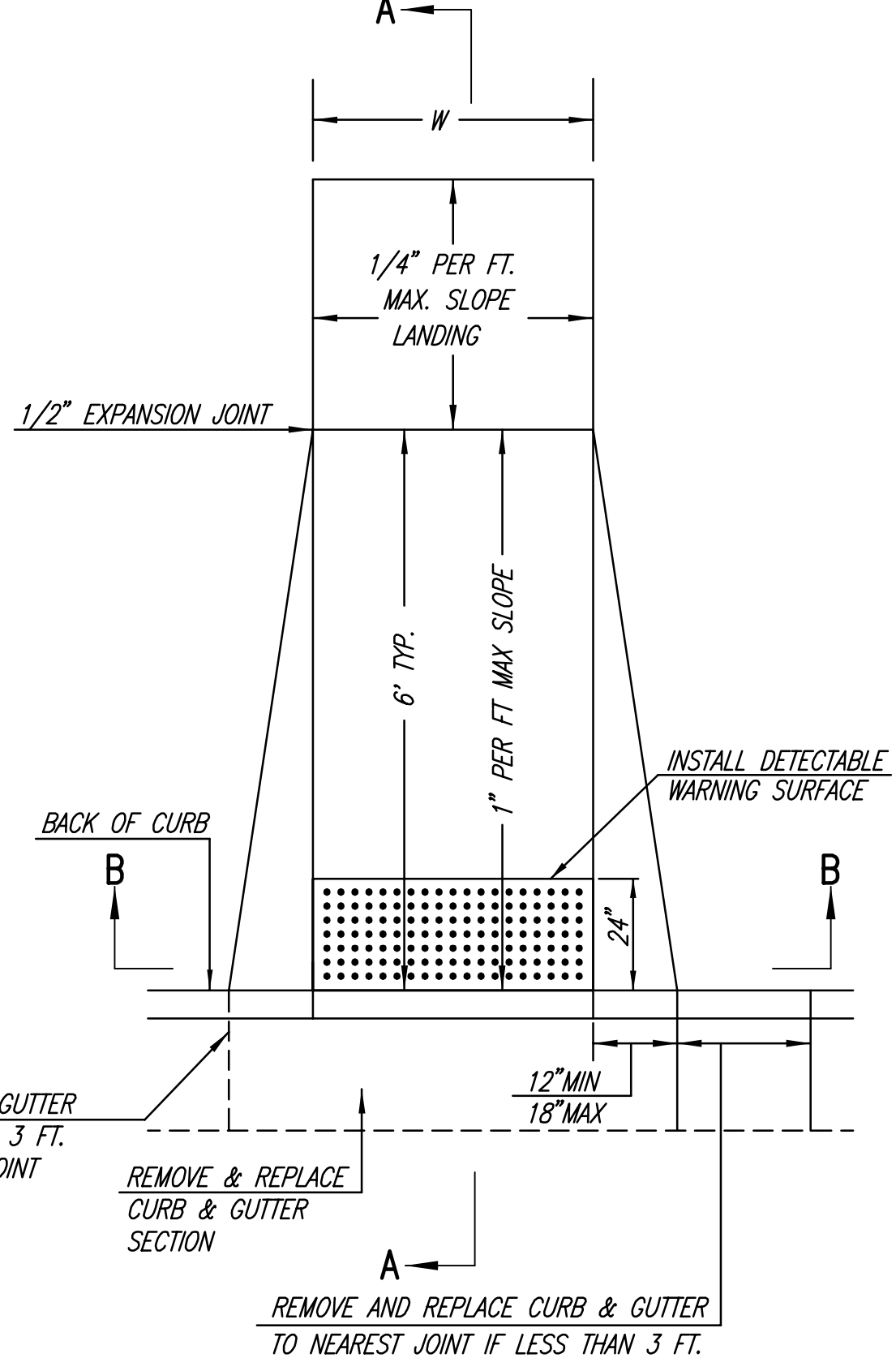


COMPACTED FILL DETAIL
WHERE SIDEWALK IS CONSTRUCTED
(See Plan Sheets for Locations)

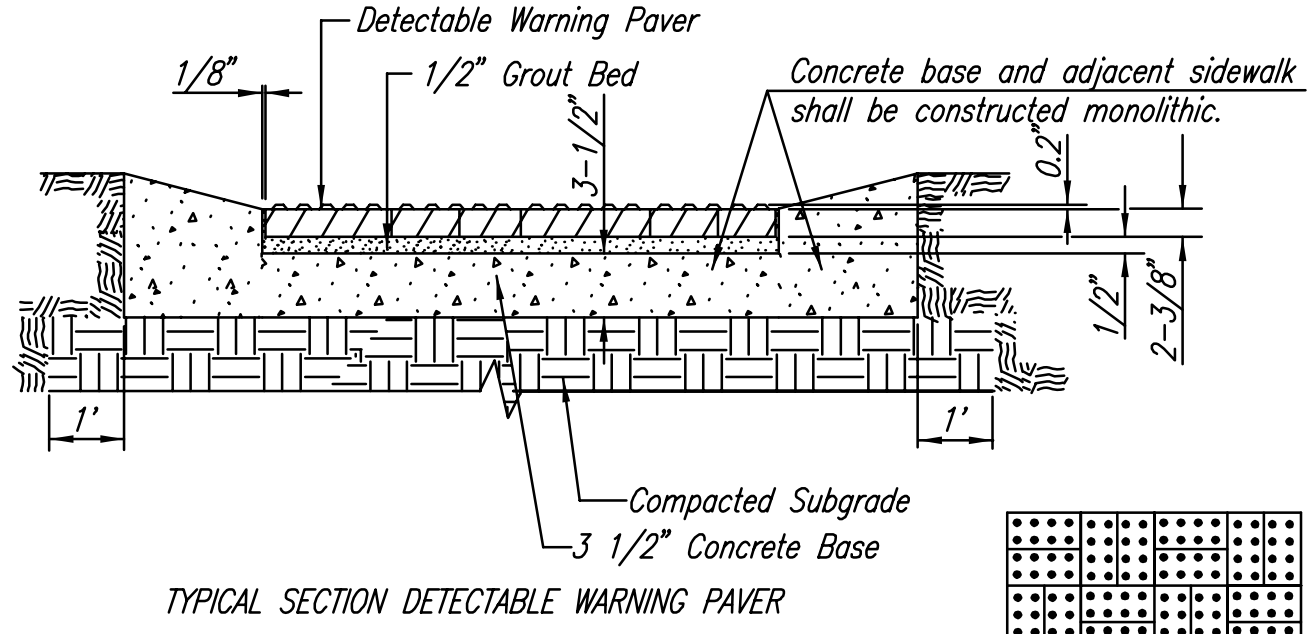


4" WALK DETAILS

W= 4'-0" FOR STANDARD RAMP
W= 5'-0" FOR RAMPS AT SCHOOL CROSSWALKS
(OR TO MATCH EXISTING)

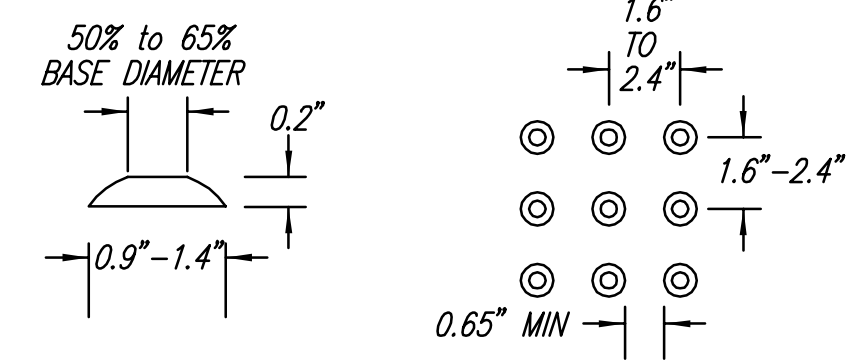


(TYPE A)
STANDARD WHEELCHAIR RAMP
WITH DETECTABLE WARNING
CONSTRUCTION DETAIL FOR STREETS
WITH COMBINED CURB & GUTTER

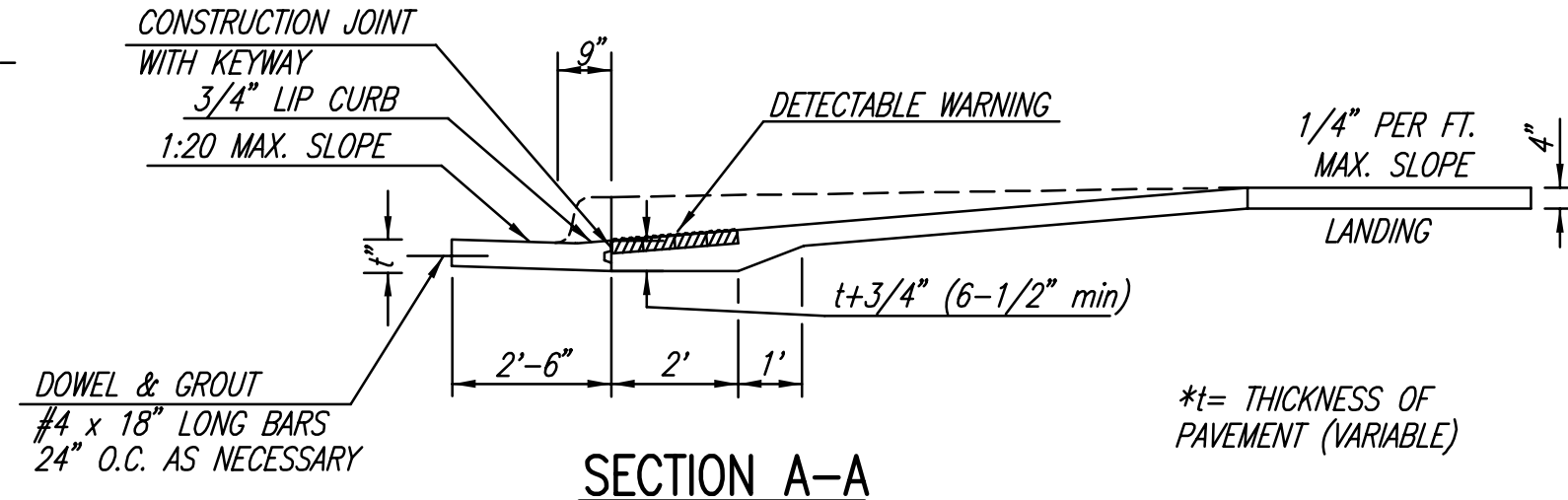


TYPICAL SECTION DETECTABLE WARNING PAVER
NOTE: RAMPS TO COMPLY WITH LATEST ADAAG GUIDELINES. PAVESTONE DETECTABLE WARNING PAVERS (OR AN APPROVED EQUAL) SHALL BE USED IN ALL WHEELCHAIR RAMPS. THE RED PAVER SHALL BE INSTALLED USING A BASKET WEAVE/PARQUET PATTERN. OTHER PATTERNS MAY BE USED WITH APPROVAL OF ENGINEER. SAND FILL JOINTS. ALIGN DOMES IN THE DIRECTION OF PEDESTRIAN TRAVEL.

SECTION B-B



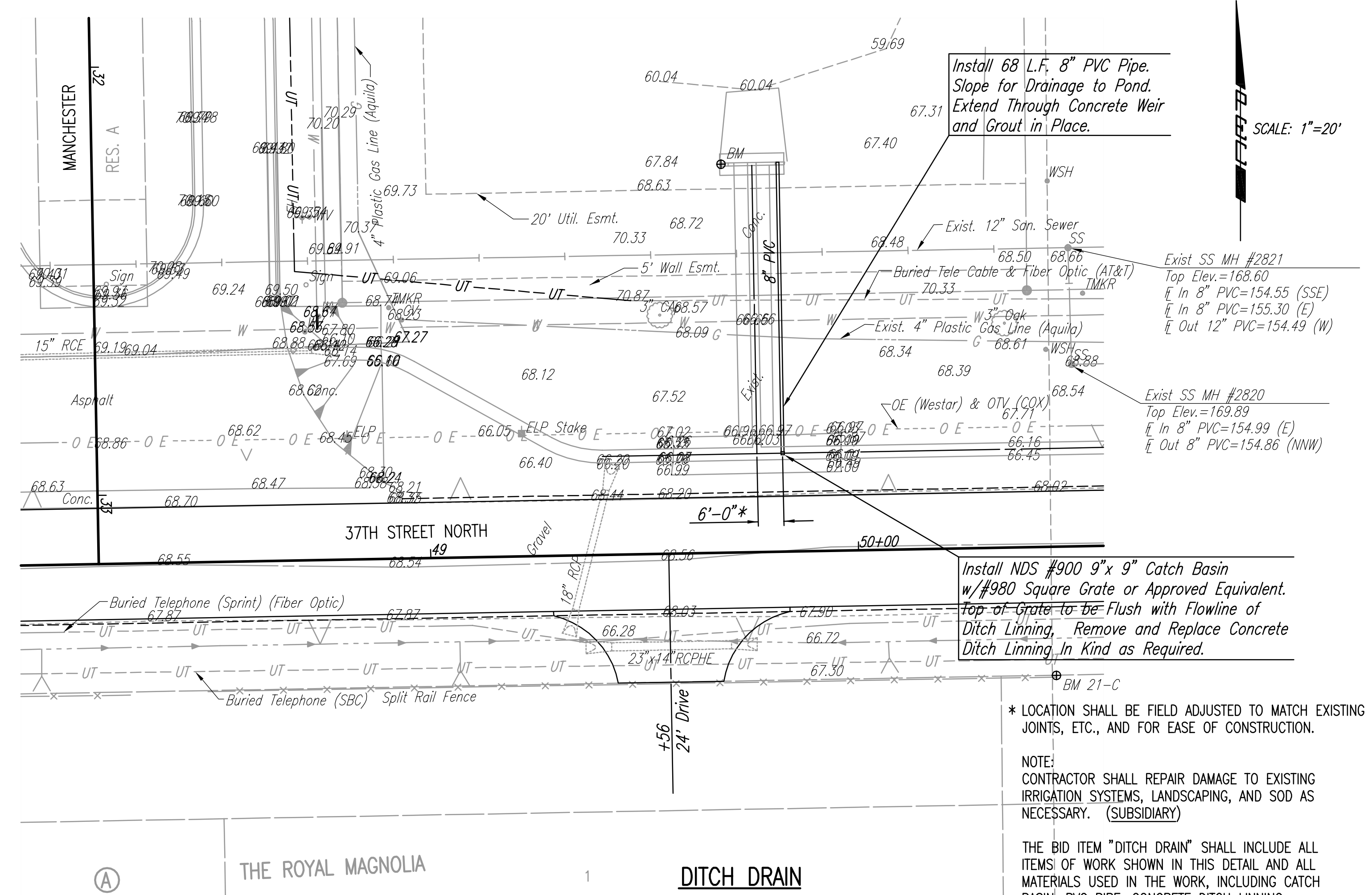
DOME DETAIL



TYPICAL WHEELCHAIR RAMP DETAILS

*t= THICKNESS OF PAVEMENT (VARIABLE)

AUGUST 4, 2003



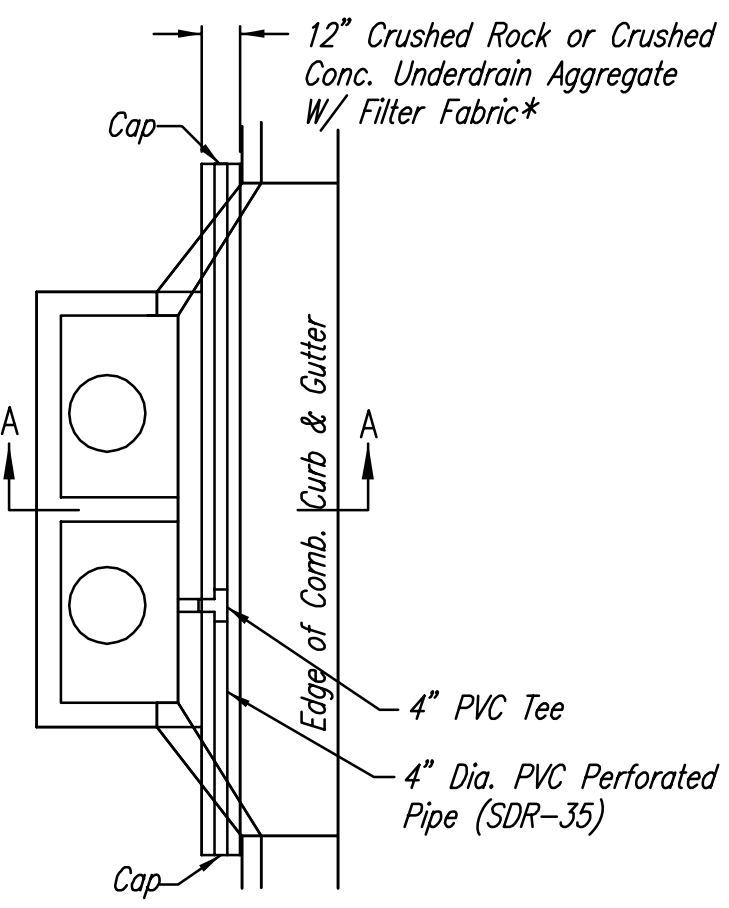
Install 68 L.F. 8" PVC Pipe.
Slope for Drainage to Pond.
Extend Through Concrete Weir
and Grout in Place.

Install NDS #900 9" x 9" Catch Basin
w/ #980 Square Grate or Approved Equivalent.
Top of Grate to be Flush with Flowline of
Ditch Lining. Remove and Replace Concrete
Ditch Lining in Kind as Required.

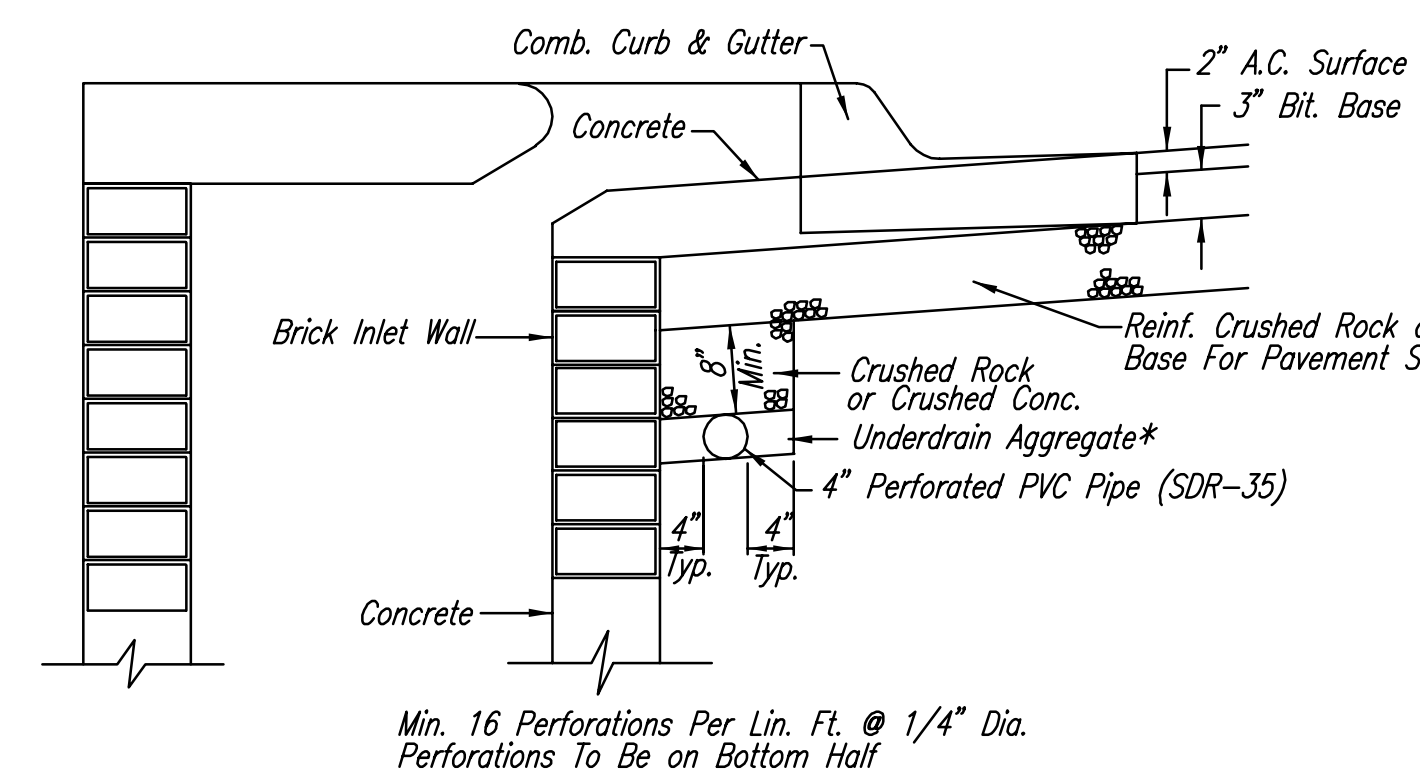
* LOCATION SHALL BE FIELD ADJUSTED TO MATCH EXISTING JOINTS, ETC., AND FOR EASE OF CONSTRUCTION.

NOTE: CONTRACTOR SHALL REPAIR DAMAGE TO EXISTING IRRIGATION SYSTEMS, LANDSCAPING, AND SOD AS NECESSARY. (SUBSIDIARY)

THE BID ITEM "DITCH DRAIN" SHALL INCLUDE ALL ITEMS OF WORK SHOWN IN THIS DETAIL AND ALL MATERIALS USED IN THE WORK, INCLUDING CATCH BASIN, PVC PIPE, CONCRETE DITCH LINING, LANDSCAPING RESTORATION, AND BORING THROUGH WEIR.



PLAN



SECTION A-A

PAVEMENT UNDERDRAIN DETAIL

NOTE: PLACE 4" PVC PERFORATED PIPE AT ALL DRAINAGE SUMP LOCATIONS.
COST OF UNDERDRAIN SYSTEM TO BE INCIDENTAL TO THE REINFORCED CRUSHED ROCK OR REINFORCED CRUSHED CONCRETE BASE.
INLET TYPE MAY VARY FROM THAT SHOWN.

* UNDERDRAIN AGGREGATE PERCENT OF AGGREGATE RETAINED

1"	0
3/4"	0-10
3/8"	45-80
#4	90-100
#8	95-100

ROCK QUALITY SHALL CONFORM TO THE REQUIREMENTS SPECIFIED BY THE KDOT 1990 EDITION STANDARD SPECIFICATION SUBSECTION 1102 FOR DURABILITY CLASS I.

PAVEMENT UNDERDRAIN LOCATIONS

STREET	STATION	SIDE
RUTGERS	38+31.47	LT. & RT.
WESTBROOK	91+57.65	LT. & RT.

MISCELLANEOUS PAVING DETAILS

JAMES L. ARMOUR, P.E.—CITY ENGINEER
CITY OF WICHITA PROJECT NO. 472-84043

Professional Engineering Consultants, P.A.
303 S. TOPEKA • WICHITA, KANSAS 67202
316-262-2691 • FAX 316-262-3003

Designed by	BDB, BMM	Job No.	35-06563-000	Sheet	18 of 56
Drawn by	BJS, TAT	Date	October 2006		

Sowed: 05-01-2007 10:34:02 AM by BJS
 Plot Scale: 1:20 05-02-2007 12:14:00 PM by BEJ
 J:\SENTOUT\2006\06563\2007-05-01 to City\Street\DWG\18-MISC PAVING DTL