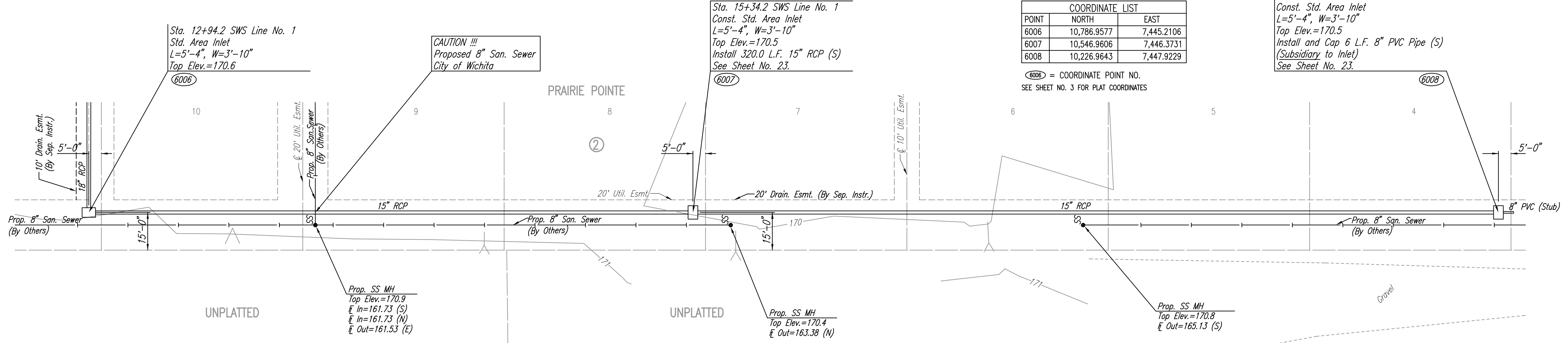
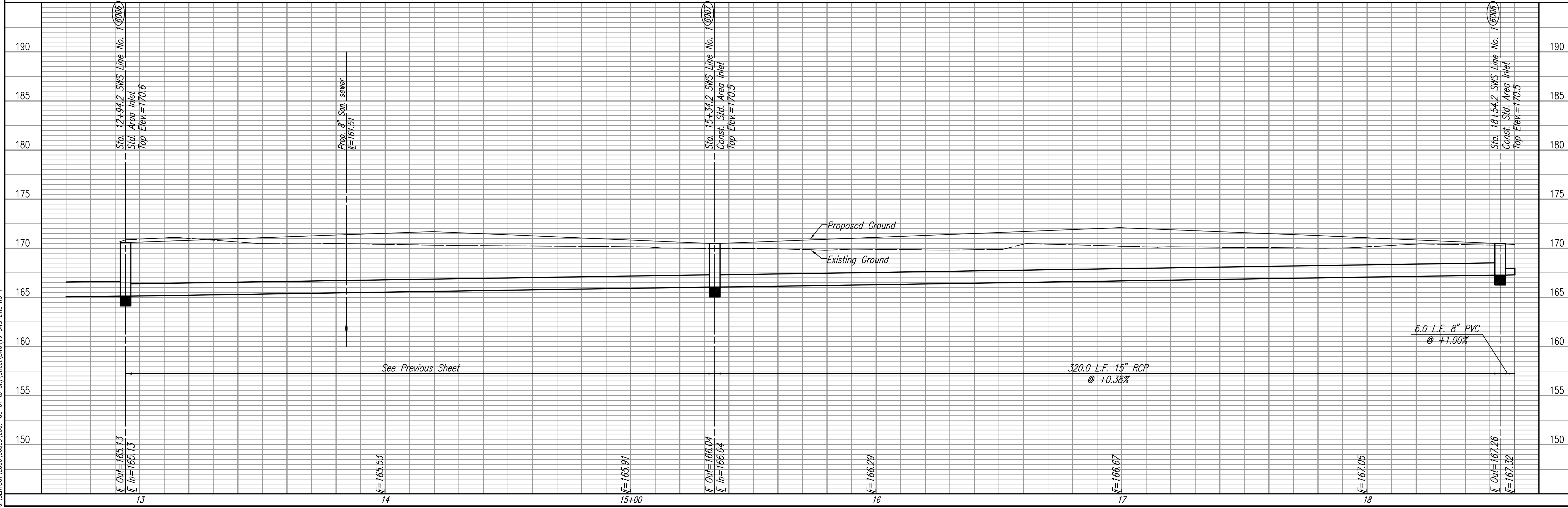


PLAN	CHECKED	CHECKED
BY		
DATE		

PROFILE	CHECKED	CHECKED
BY		
DATE		

S:\05-02-2007\121324_Plan by REFJ
 Plot Scale 1:20 05-02-2007 12:13:36 PM by REFJ
 J:\SEN\01\2006\06563\2007-05-01 to City\Street\DWG\19-SWS LINE NO 1



COORDINATE LIST		
POINT	NORTH	EAST
6006	10,786.9577	7,445.2106
6007	10,546.9606	7,446.3731
6008	10,226.9643	7,447.9229

6006 = COORDINATE POINT NO.
 SEE SHEET NO. 3 FOR PLAT COORDINATES

Sta. 18+54.2 SWS Line No. 1
 Const. Std. Area Inlet
 L=5'-4", W=3'-10"
 Top Elev.=170.5
 Install and Cap 6 L.F. 8" PVC Pipe (S)
 (Subsidiary to Inlet)
 See Sheet No. 23.

SCALE: 1"=20'
 P.B.G.

Professional Engineering Consultants, P.A.
 303 S. TORREY, WICHITA, KANSAS 67202
 316-262-2291 • FAX 316-262-3063

Designed By: BDB, BMM
 Drawn By: BUS, TAT

Job No. 35-06563-000
 Date: October 2006

PRAIRIE POINTE—PHASE 3
SWS LINE NO. 1
 JAMES L. ARMOUR, P.E.—CITY ENGINEER
 CITY OF WICHITA PROJECT NO. 472-84043

Sheet 20 of 56