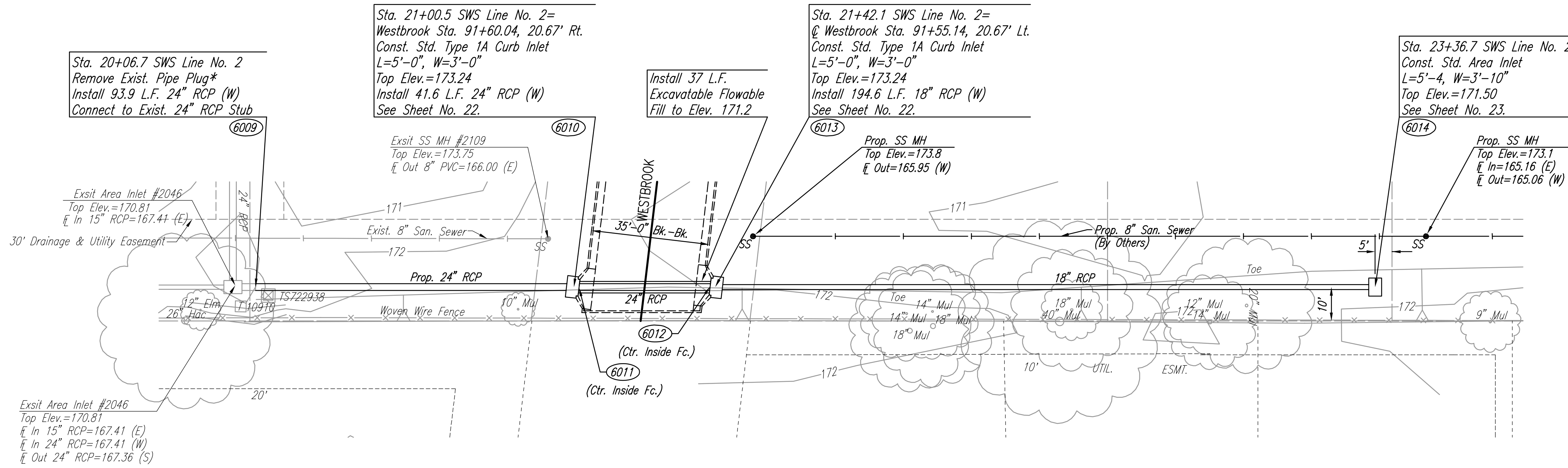


PLAN	CHECKED	DATE
	CHECKED	

PROFILE	CHECKED	DATE
	CHECKED	

Saved: 05-01-2007 7:56:56 AM by BJS
 Plot Scale: 1:20 05-02-2007 12:12:23 PM by REFJ
 J:\SENTOUT\2006\065663\2007-05-01 to city\Street\DWG\21-SWS LINE NO 2

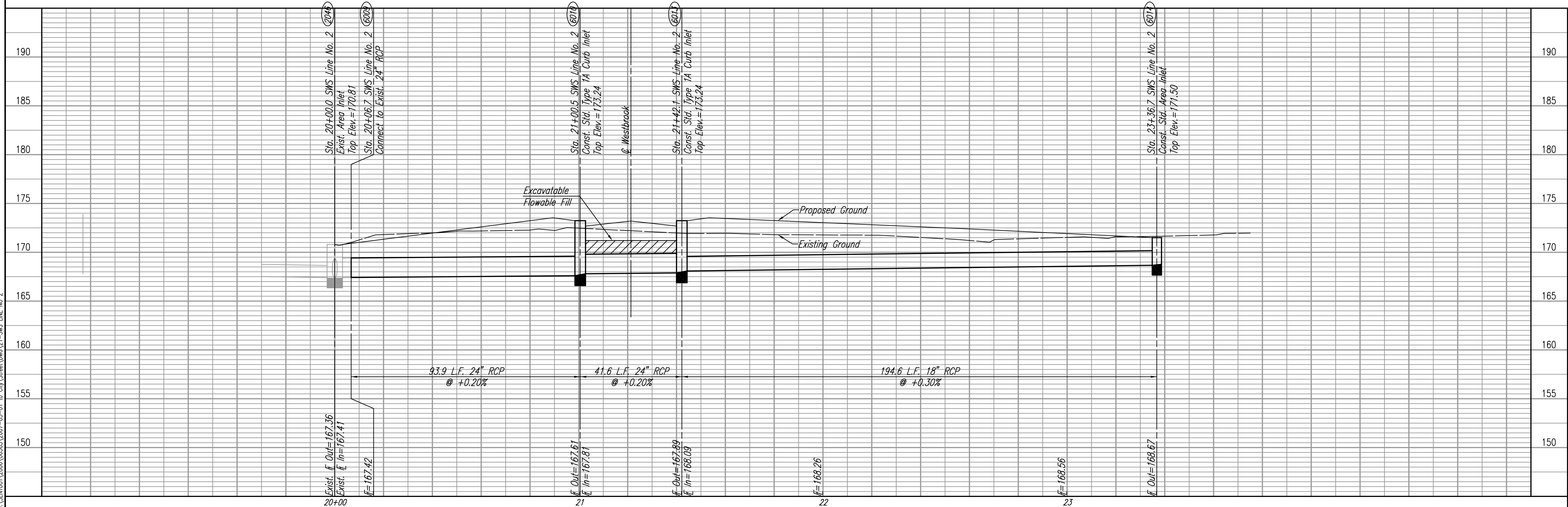


SCALE: 1"=20'

POINT	NORTH	EAST
2046	11,231.3533	8,037.0231
6009	11,231.7412	8,031.0236
6010	11,230.0952	7,937.1817
6011	11,230.2458	7,935.6893
6012	11,229.2153	7,897.0506
6013	11,229.3652	7,895.5581
6014	11,225.9528	7,701.0123

(2046) = COORDINATE POINT NO.
 SEE SHEET NO. 3 FOR PLAT COORDINATES

* PRIOR TO BEGINNING CONSTRUCTION, THE CONTRACTOR SHALL EXCAVATE THE EXISTING 24" RCP AT STATION 20+06.7 TO VERIFY PIPE SIZE, TYPE, AND HORIZONTAL AND VERTICAL LOCATION. THE CONTRACTOR SHALL REPORT HIS FINDINGS TO THE ENGINEER SO THAT ANY NECESSARY PLAN MODIFICATIONS MAY BE MADE. ANY ADDITIONAL LABOR OR MATERIALS NECESSARY TO COMPLETE THE CONNECTION SHALL BE CONSIDERED SUBSIDIARY TO THE PROJECT.



PRAIRIE POINTE—PHASE 3
SWS LINE NO. 2

JAMES L. ARMOUR, P.E.—CITY ENGINEER
 CITY OF WICHITA PROJECT NO. 472-84043

Professional Engineering Consultants, P.A.
 303 S. TORNSA WICHITA, KANSAS 67202
 316-262-2691 • FAX 316-262-3003

Designed By: BDB, BMM
 Drawn By: BJS, TAT
 Job No.: 35-06563-000
 Date: October 2006