

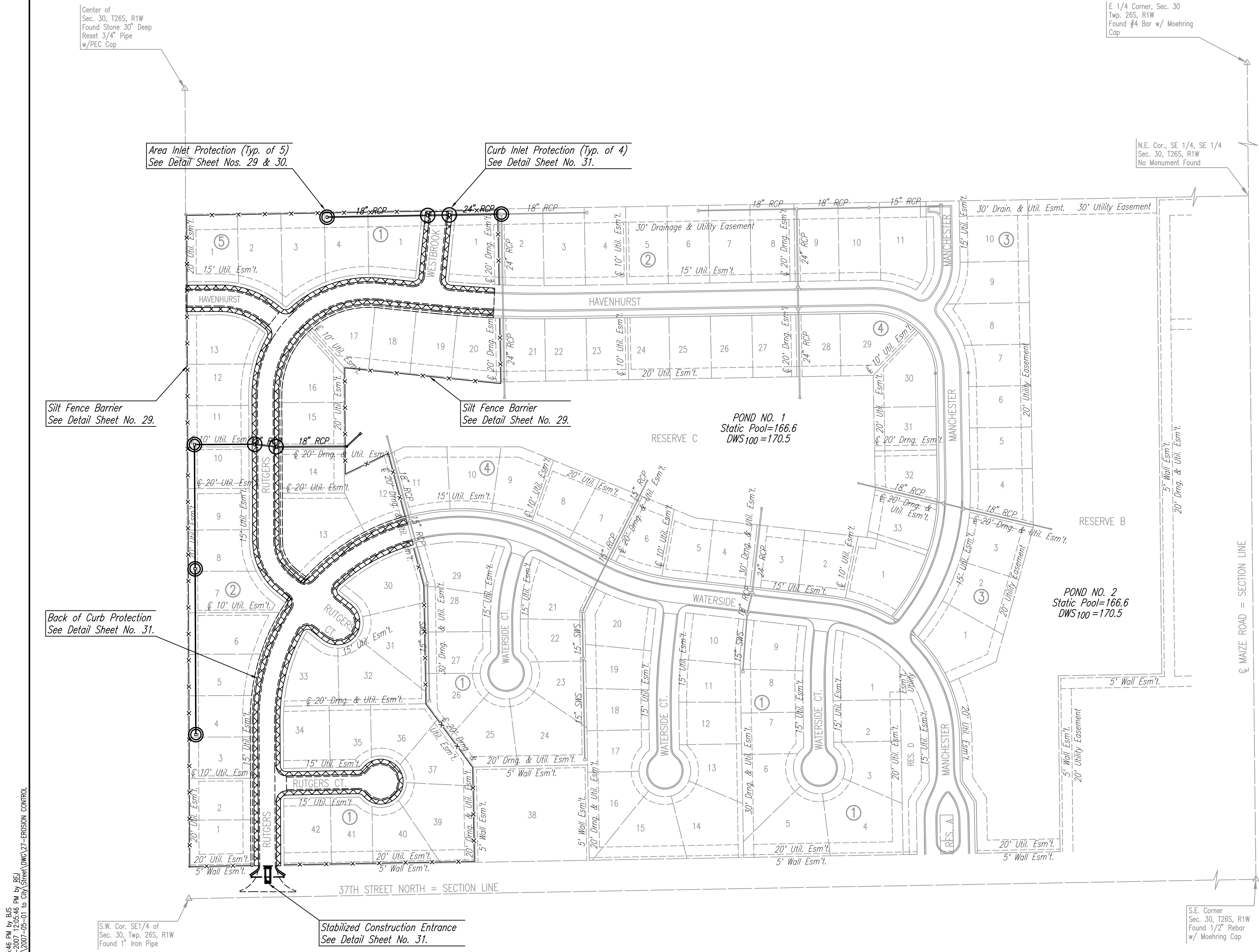
GENERAL NOTES

1. THE EROSION CONTROL DEVICES SHOWN ON THIS SHEET ARE CONSIDERED MINIMUM STANDARDS. WHENEVER SEDIMENT ENTERS THE STREETS, STORM SEWERS, DITCHES, OR PONDS, CONTRACTOR WILL INSTALL ADDITIONAL DEVICES, AS NEEDED, TO CORRECT THE PROBLEM.
2. THE EROSION CONTROL DEVICES SHOWN HEREON MUST BE IN PLACE AT ALL TIMES DURING CONSTRUCTION UNTIL SUCH TIME AS THE SITE IS REESTABLISHED WITH PAVING OR GRASS. TEMPORARY OR PERMANENT SEED AND MULCH WILL BE INSTALLED WHEN EARTHWORK ACTIVITIES CEASE IN AN AREA FOR 14 DAYS OR MORE.
3. BACK OF CURB PROTECTION: AS SHOWN ON CITY STANDARD DETAILS. THESE DEVICES MUST REMAIN IN PLACE UNTIL THE AREA BETWEEN THE CURB AND RIGHT-OF-WAY LINE HAS BEEN PERMANENTLY STABILIZED.
4. ANY MUD INADVERTENTLY TRACKED ONTO ANY STREET WILL BE CLEANED UP BY THE CONTRACTOR, AT THE END OF EACH DAY'S WORK.
5. CONTRACTOR TO FURNISH A TRUCK WASH-OUT PIT TO BE PLACED AT A CONVENIENT LOCATION THAT DOES NOT CONFLICT WITH CONSTRUCTION. CONTRACTOR SHALL CLEAN OUT AND BACKFILL PIT PRIOR TO FINAL INSPECTION.

LEGEND

- x— Silt Fence Barrier
- ⊙ Area Inlet Protection
- Curb Inlet Protection
- ▨ Back of Curb Protection

SCALE: 1"=100'



Center of Sec. 30, T26S, R1W Found Stone 3/4" Deep Reset 3/4" Pipe w/PEC Cap

E 1/4 Corner, Sec. 30, Twp. 26S, R1W Found #4 Bar w/ Moehring Cap

N.E. Cor., SE 1/4, SE 1/4 Sec. 30, T26S, R1W No Monument Found

S.E. Corner Sec. 30, T26S, R1W Found 1/2" Rebar w/ Moehring Cap

Area Inlet Protection (Typ. of 5) See Detail Sheet Nos. 29 & 30.

Curb Inlet Protection (Typ. of 4) See Detail Sheet No. 31.

Silt Fence Barrier See Detail Sheet No. 29.

Silt Fence Barrier See Detail Sheet No. 29.

Back of Curb Protection See Detail Sheet No. 31.

Stabilized Construction Entrance See Detail Sheet No. 31.

S.W. Cor. SE1/4 of Sec. 30, Twp. 26S, R1W Found 1" Iron Pipe

Sowed 04-30-2007 2:25:46 PM by BJS
 Plot Scale 1:100 05-02-2007 12:05:18 PM by BEJ
 J:\SEN\001\2006\06563\2007-05-01 to City\Street\DWG\27-EROSION CONTROL

No.	Revision	By	Date
PRAIRIE POINTE-PHASE 3			
EROSION CONTROL (BMP) PLAN			
JAMES L. ARMOUR, P.E.—CITY ENGINEER CITY OF WICHITA PROJECT NO. 472-84043 Professional Engineering Consultants, P.A. 303 S. TOPEKA • WICHITA, KANSAS 67202 316-262-2691 • FAX 316-262-3003			
Designed by	BDB, BMM	Job No.	35-06563-000
Drawn by	BJS, TAT	Date	October 2006
			Sheet 27 of 56

