

**BENCHMARKS:**  
 135th St. W. & 13th St. N. - City of Wichita Disc at Southwest Corner of Intersection, 30.00'± S. of C of 13th St. N. 35.00'± W. of C of 135th St. W.  
 Elev. = 1355.65 MSL

"□" Cut in Top of Curb 10' South of end of Existing Pavement, East Curb adjacent to Lot 12, Block D, Copper Gate North Addition.  
 Elev. = 1362.13 MSL

BM Disc in top Curb adjacent to Fire Hydrant at E. End of N. Curb Return of Kiwi & Decker, adjacent to Lot 16, Block D, Copper Gate North Addition.  
 Elev. = 1361.04 MSL

**\*NOTE:**  
 The lower connection (Elev. = 1322.91) and the 10" riser pipe has been installed with 24" Sewer Main. The existing 10" riser pipe from the lower connection extends up 15' minimum from base of manhole. Contractor for this project shall install PVC Cross, 8" Riser Pipe, Restraining Assy's, Clean-out Riser Box, and additional 10" Pipe as necessary to connect to the existing 10" Riser Pipe. Contractor shall core into the manhole to install the upper connection (Elev. = 1340.80) and seal and grout around 10" pipe, thus creating an outside drop connection per detail, Sheet 10. This Work Shall be incidental to Project Cost.

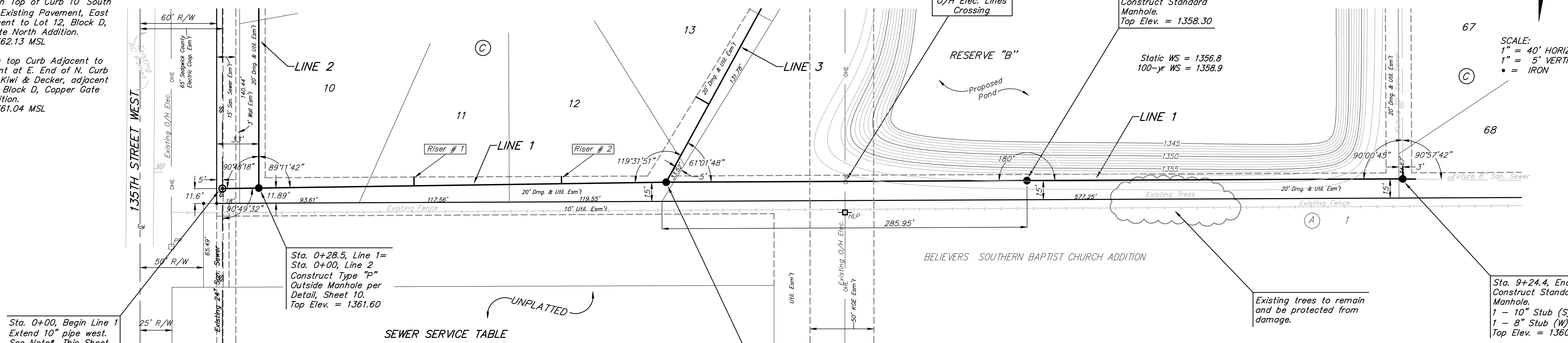
**SILVERTON ADDITION**

**CAUTION!**  
 O/H Elec. Lines Crossing

Sta. 6+30.1, Line 1  
 Construct Standard Manhole.  
 Top Elev. = 1358.30

Static WS = 1356.8  
 100-yr WS = 1358.9

**SCALE:**  
 1" = 40' HORIZONTAL  
 1" = 5' VERTICAL  
 • = IRON

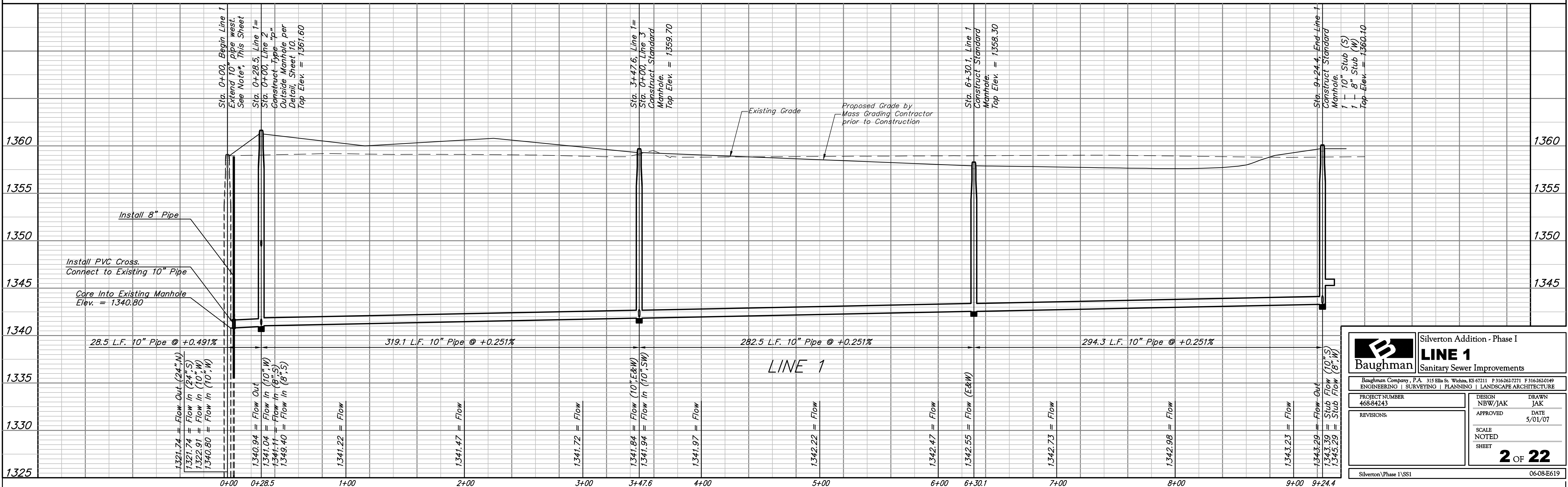


**SEWER SERVICE TABLE**

NUMBER	TYPE	LOCATION			FOR INFORMATION ONLY	
		LOT NO.	BLOCK NO.	LINE NO.	STATION/DIRECTION	APPROXIMATE LENGTH 4" PIPE
1	10" X 4" Tee	11	C	1	1+50/Lt.	13' 7"
2	10" X 4" Tee	12	C	1	2+65/Lt.	13' 6"

**NOTE:** Vertical Riser Pipe shall be extended to 2' minimum above ground water elevation and 4' maximum below proposed ground elevation.

**CONSTRUCTION SEQUENCE NOTE:**  
 The Contractor shall Complete Line 1 from Sta. 0+00 to Sta. 3+47.6 and Line 3 from Sta. 0+00 to Sta. 16+95.9 before proceeding to any other part of the project.



**Baughman** Sanitary Sewer Improvements  
 Silverton Addition - Phase I  
**LINE 1**

PROJECT NUMBER: 468-84243  
 DESIGN: NBW/JAK  
 DRAWN: JAK  
 APPROVED: DATE 5/01/07  
 SCALE: NOTED  
 SHEET: **2 OF 22**

Silvertown Phase I\SS1 06-08-E619