

BENCHMARKS:
 135th St. W. & 13th St. N. - City of Wichita Disc at Southwest Corner of Intersection, 30.00'± S. of C of 13th St. N. 35.00'± W. of C of 135th St. W.
 Elev. = 1355.65 MSL

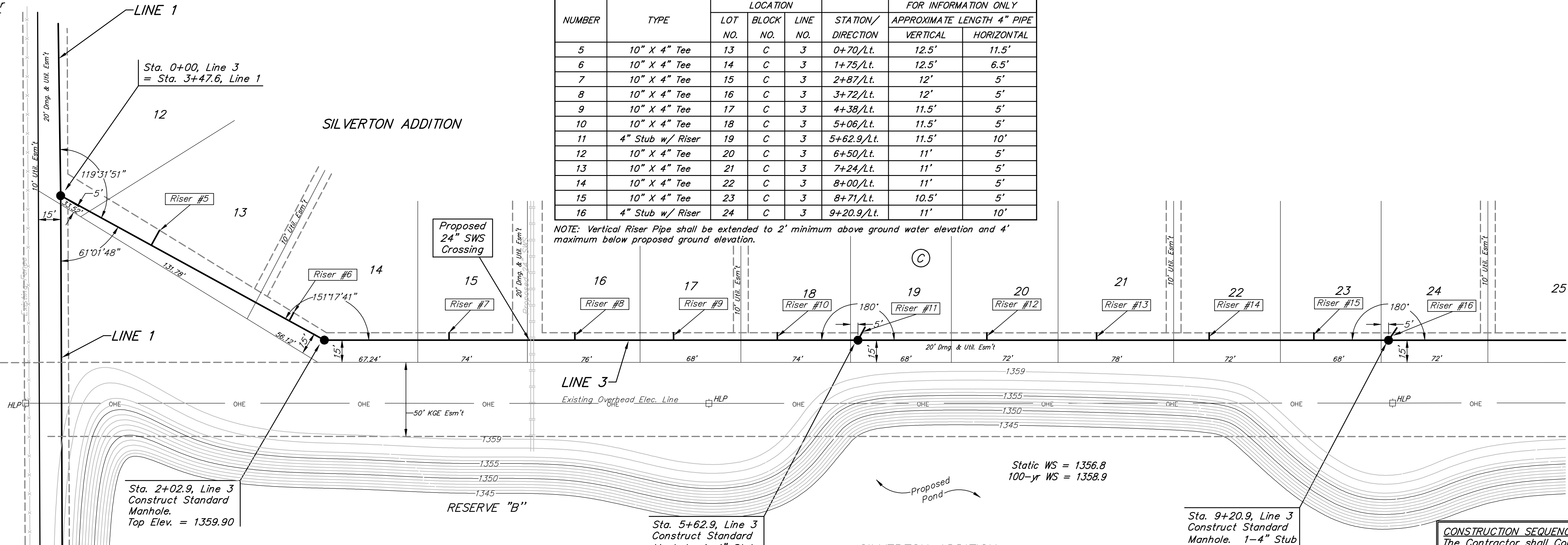
"□" Cut in Top of Curb 10' South of end of Existing Pavement, East Curb adjacent to Lot 12, Block D, Copper Gate North Addition.
 Elev. = 1362.13 MSL

BM Disc in top Curb adjacent to Fire Hydrant at E. End of N. Curb Return of Kiwi & Decker, adjacent to Lot 16, Block D, Copper Gate North Addition.
 Elev. = 1361.04 MSL

UNPLATTED

(A) 1

BELIEVERS SOUTHERN BAPTIST CHURCH ADDITION



SEWER SERVICE TABLE

NUMBER	TYPE	LOCATION			FOR INFORMATION ONLY	
		LOT NO.	BLOCK NO.	LINE NO. / STATION / DIRECTION	APPROXIMATE LENGTH 4" PIPE VERTICAL	HORIZONTAL
5	10" X 4" Tee	13	C	3 0+70/Lt.	12.5'	11.5'
6	10" X 4" Tee	14	C	3 1+75/Lt.	12.5'	6.5'
7	10" X 4" Tee	15	C	3 2+87/Lt.	12'	5'
8	10" X 4" Tee	16	C	3 3+72/Lt.	12'	5'
9	10" X 4" Tee	17	C	3 4+38/Lt.	11.5'	5'
10	10" X 4" Tee	18	C	3 5+06/Lt.	11.5'	5'
11	4" Stub w/ Riser	19	C	3 5+62.9/Lt.	11.5'	10'
12	10" X 4" Tee	20	C	3 6+50/Lt.	11'	5'
13	10" X 4" Tee	21	C	3 7+24/Lt.	11'	5'
14	10" X 4" Tee	22	C	3 8+00/Lt.	11'	5'
15	10" X 4" Tee	23	C	3 8+71/Lt.	10.5'	5'
16	4" Stub w/ Riser	24	C	3 9+20.9/Lt.	11'	10'

NOTE: Vertical Riser Pipe shall be extended to 2' minimum above ground water elevation and 4' maximum below proposed ground elevation.

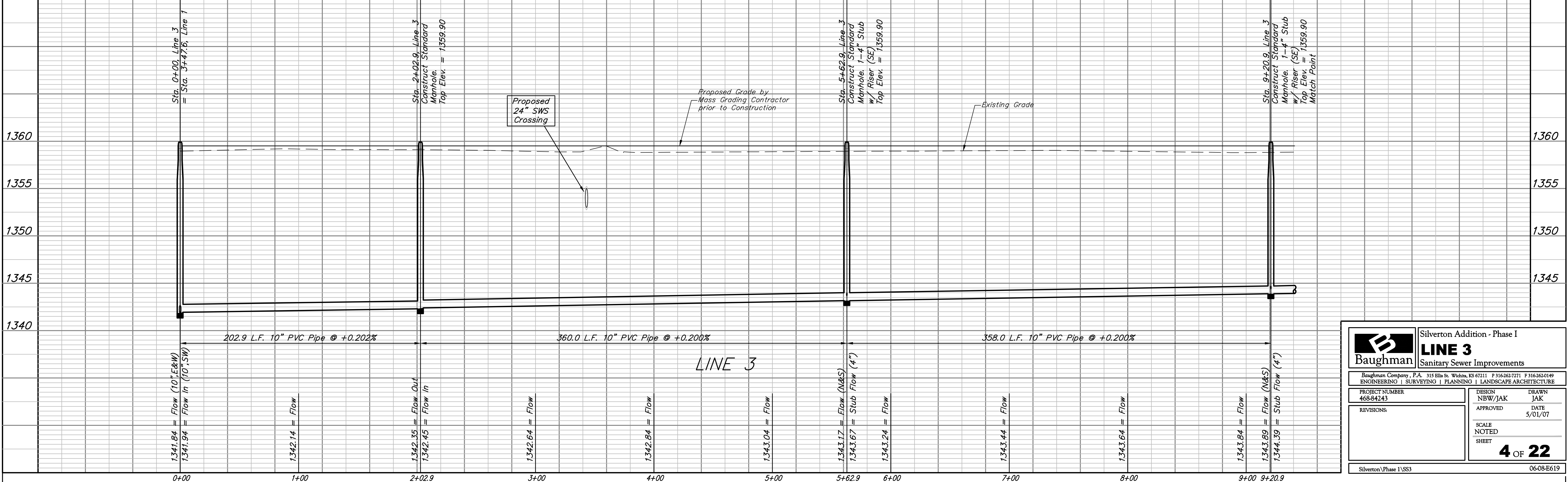
SCALE:
 1" = 40' HORIZONTAL
 1" = 5' VERTICAL
 • = IRON

Sta. 2+02.9, Line 3
 Construct Standard Manhole.
 Top Elev. = 1359.90

Sta. 5+62.9, Line 3
 Construct Standard Manhole. 1-4" Stub w/ Riser (SE)
 Top Elev. = 1359.90

Static WS = 1356.8
 100-yr WS = 1358.9

CONSTRUCTION SEQUENCE NOTE:
 The Contractor shall Complete Line 1 from Sta. 0+00 to Sta. 3+47.6 and Line 3 from Sta. 0+00 to Sta. 16+95.9 before proceeding to any other part of the project.



		Silverton Addition - Phase I	
		LINE 3 Sanitary Sewer Improvements	
PROJECT NUMBER 468-84243		DESIGN DRAWN NBW/JAK JAK	
REVISIONS:		APPROVED DATE 5/01/07	
SCALE NOTED SHEET		4 OF 22	
Silverton Phase I\SS3		0608-E619	