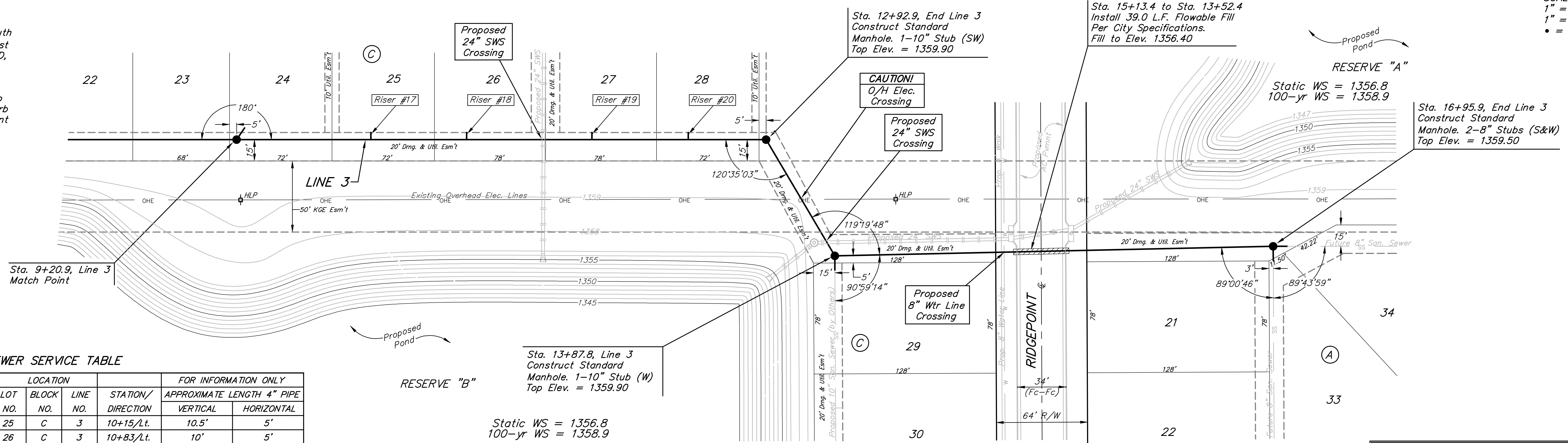


BENCHMARKS:
 135th St. W. & 13th St. N. - City of Wichita Disc at Southwest Corner of Intersection, 30.00'± S. of C of 13th St. N. 35.00'± W. of C of 135th St. W.
 Elev. = 1355.65 MSL

"□" Cut in Top of Curb 10' South of end of Existing Pavement, East Curb adjacent to Lot 12, Block D, Copper Gate North Addition.
 Elev. = 1362.13 MSL

BM Disc in top Curb adjacent to Fire Hydrant at E. End of N. Curb Return of Kiwi & Decker, adjacent to Lot 16, Block D, Copper Gate North Addition.
 Elev. = 1361.04 MSL

SCALE:
 1" = 40' HORIZONTAL
 1" = 5' VERTICAL
 • = IRON

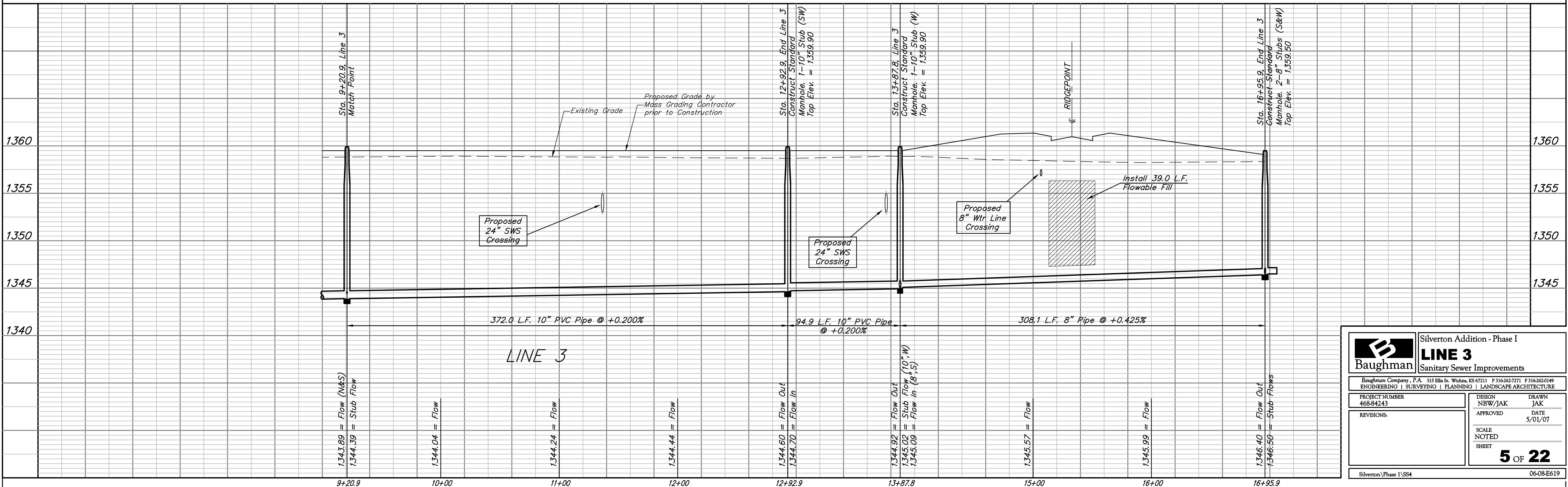


SEWER SERVICE TABLE

NUMBER	TYPE	LOCATION				FOR INFORMATION ONLY	
		LOT NO.	BLOCK NO.	LINE NO.	STATION/DIRECTION	APPROXIMATE LENGTH 4" PIPE VERTICAL	HORIZONTAL
17	10" X 4" Tee	25	C	3	10+15/Lt.	10.5'	5'
18	10" X 4" Tee	26	C	3	10+83/Lt.	10'	5'
19	10" X 4" Tee	27	C	3	11+71/Lt.	10'	5'
20	10" X 4" Tee	28	C	3	12+38/Lt.	10'	5'

NOTE: Vertical Riser Pipe shall be extended to 2' minimum above ground water elevation and 4' maximum below proposed ground elevation.

CONSTRUCTION SEQUENCE NOTE:
 The Contractor shall Complete Line 1 from Sta. 0+00 to Sta. 3+47.6 and Line 3 from Sta. 0+00 to Sta. 16+95.9 before proceeding to any other part of the project.



		Silverton Addition - Phase I LINE 3 Sanitary Sewer Improvements	
		PROJECT NUMBER: 468-84243 REVISIONS:	
DESIGN: NBW/JAK DRAWN: JAK APPROVED: DATE 5/01/07		SCALE: NOTED SHEET: 5 OF 22	
Silverton Phase I\SS4		0608-E619	