

BENCHMARKS:
 135th St. W. & 13th St. N. - City of Wichita Disc at Southwest Corner of Intersection, 30.00'± S. of C of 13th St. N. 35.00'± W. of C of 135th St. W.
 Elev. = 1355.65 MSL

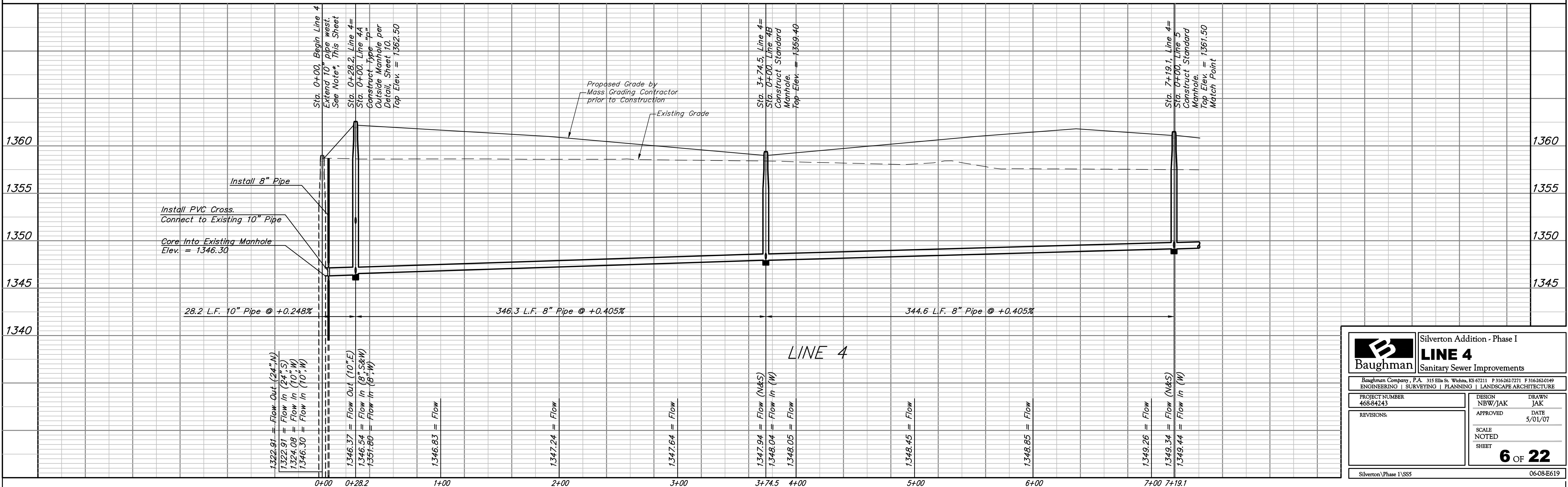
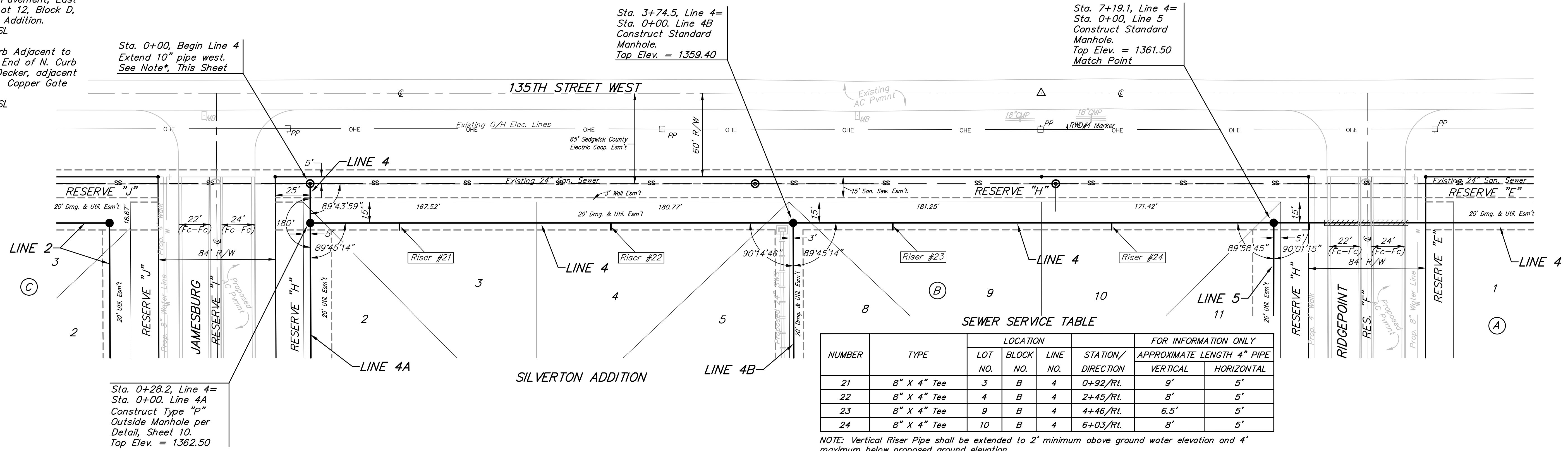
"□" Cut in Top of Curb 10' South of end of Existing Pavement, East Curb adjacent to Lot 12, Block D, Copper Gate North Addition.
 Elev. = 1362.13 MSL

BM Disc in top Curb adjacent to Fire Hydrant at E. End of N. Curb Return of Kiwi & Decker, adjacent to Lot 16, Block D, Copper Gate North Addition.
 Elev. = 1361.04 MSL

***NOTE:**

The lower connection (Elev. = 1324.08) and the 10" riser pipe has been installed with 24" Sewer Main. The existing 10" riser pipe from the lower connection extends up 15' minimum from base of manhole. Contractor for this project shall install PVC Cross, 8" Riser Pipe, Restraining Assys, Clean-out Riser Box, and additional 10" Pipe as necessary to connect to the existing 10" Riser Pipe. Contractor shall core into the manhole to install the upper connection (Elev. = 1346.30) and seal and grout around 10" pipe, thus creating an outside drop connection per detail, Sheet 10. This Work Shall be Incidental to Project Cost.

SCALE:
 1" = 40' HORIZONTAL
 1" = 5' VERTICAL
 • = IRON



Baughman Sanitary Sewer Improvements

Silverton Addition - Phase I
LINE 4

PROJECT NUMBER: 468-84243
 REVISIONS:

DESIGN: NBW/JAK
 DRAWN: JAK
 APPROVED: DATE 5/01/07
 SCALE: NOTED
 SHEET: **6 OF 22**

Silverton\Phase I\SS5 06-08-E619