

BENCHMARKS:
 135th St. W. & 13th St. N. - City of Wichita Disc at Southwest Corner of Intersection, 30.00'± S. of C of 13th St. N. 35.00'± W. of C of 135th St. W.
 Elev. = 1355.65 MSL

"□" Cut in Top of Curb 10' South of end of Existing Pavement, East Curb adjacent to Lot 12, Block D, Copper Gate North Addition.
 Elev. = 1362.13 MSL

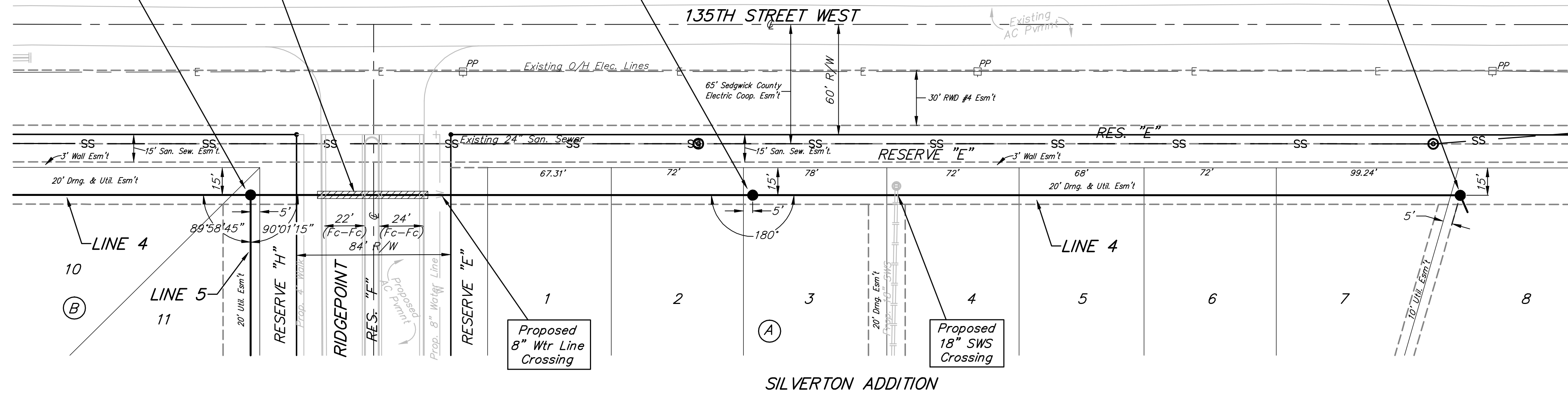
BM Disc in top Curb adjacent to Fire Hydrant at E. End of N. Curb Return of Kiwi & Decker, adjacent to Lot 16, Block D, Copper Gate North Addition.
 Elev. = 1361.04 MSL

Sta. 7+55.5 to Sta. 8+15.5
 Install 60.0 L.F. Flowable Fill Per City Specifications.
 Fill to Elev. 1307.00

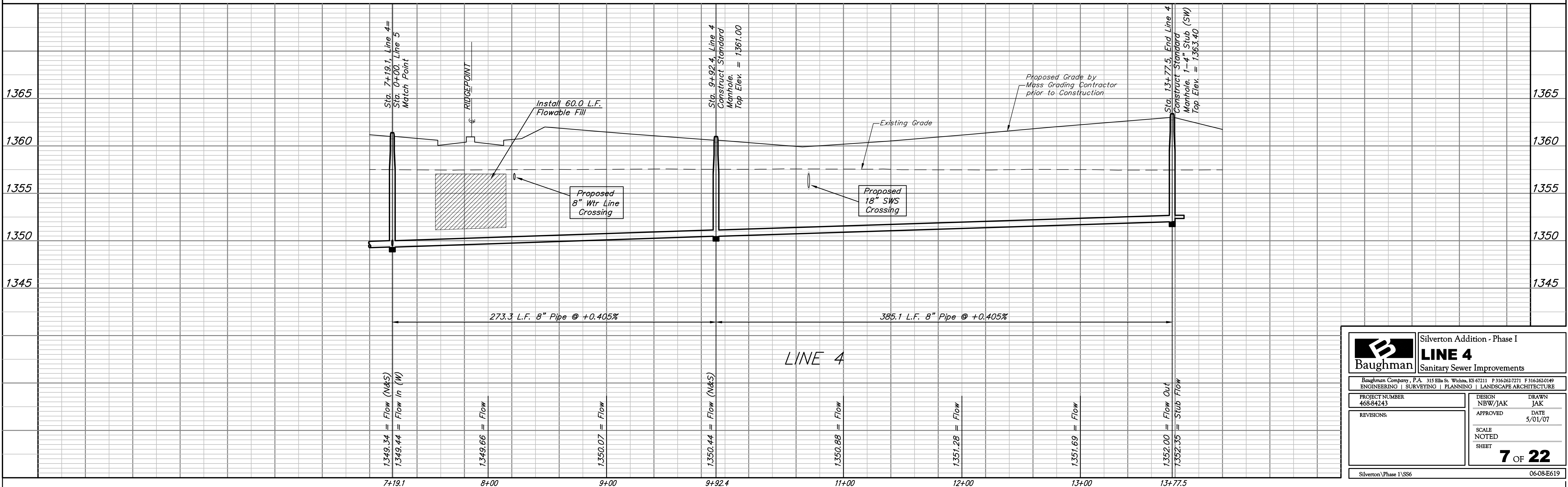
Sta. 7+19.1, Line 4=
 Sta. 0+00, Line 5
 Match Point

Sta. 9+92.4, Line 4
 Construct Standard Manhole.
 Top Elev. = 1361.00

Sta. 13+77.5, End Line 4
 Construct Standard Manhole. 1-4" Stub (SW)
 Top Elev. = 1363.40



SCALE:
 1" = 40' HORIZONTAL
 1" = 5' VERTICAL
 • = IRON



		Silverton Addition - Phase I LINE 4 Sanitary Sewer Improvements	
		<small>Baughman Company, P.A. 315 Ellis St. Wichita, KS 67211 P 316-262-7271 F 316-262-0149 ENGINEERING SURVEYING PLANNING LANDSCAPE ARCHITECTURE</small>	
PROJECT NUMBER 468-84243	DESIGN NBW/JAK	DRAWN JAK	DATE 5/01/07
REVISIONS:	SCALE NOTED	SHEET 7 OF 22	
<small>Silverton\Phase I\SS6</small>		<small>06-08-E619</small>	