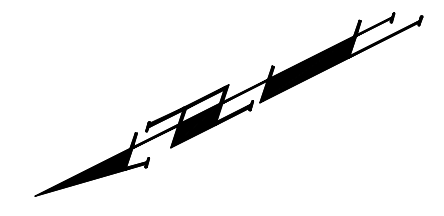
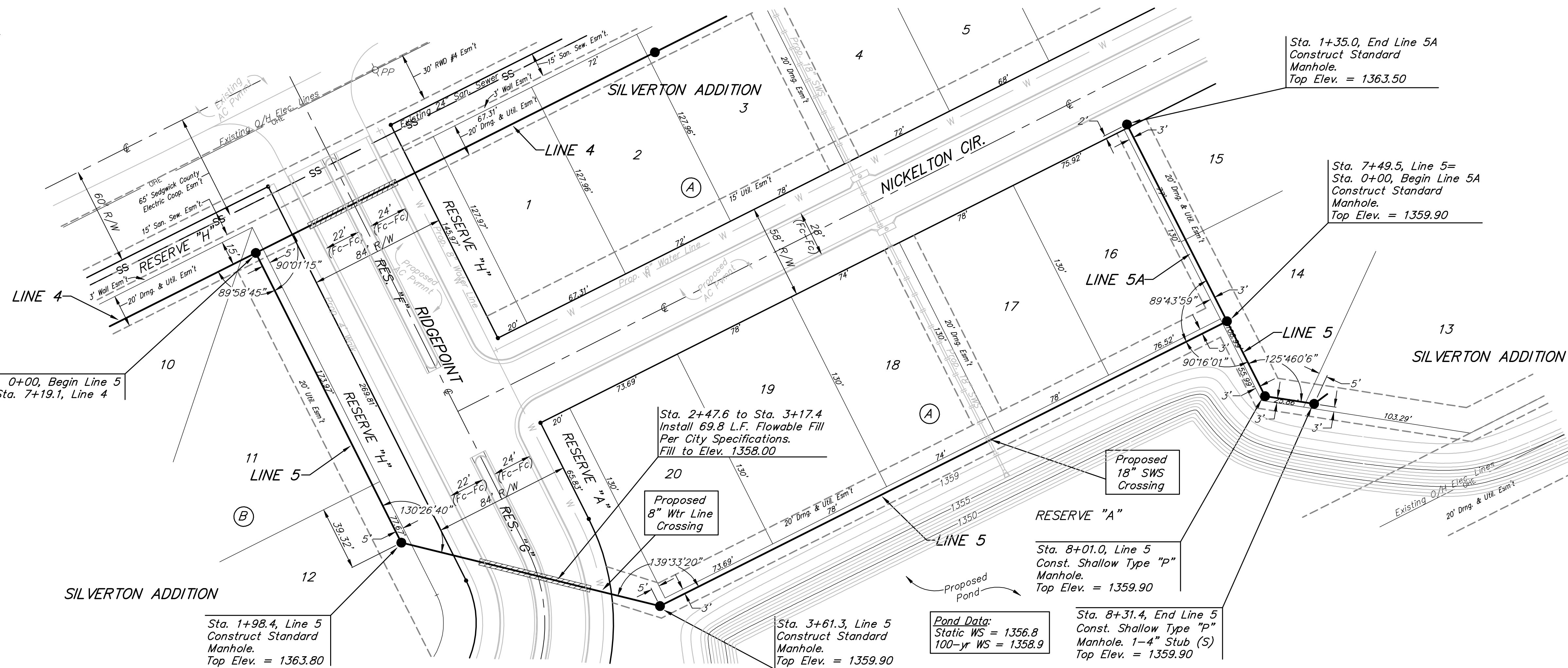


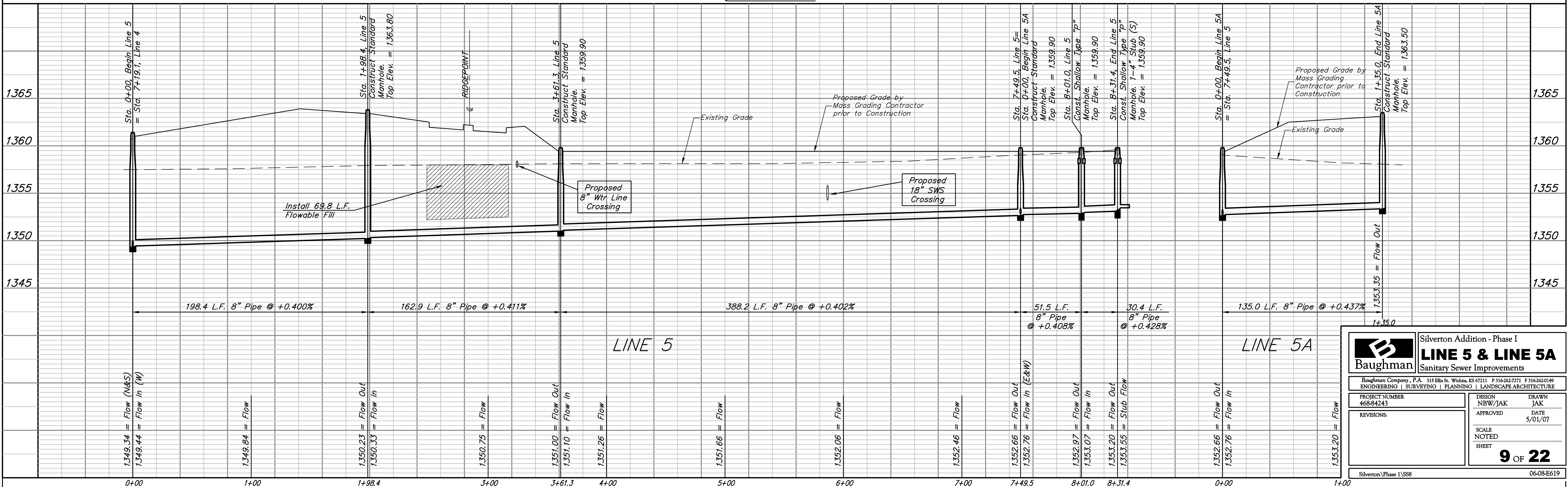
BENCHMARKS:
 135th St. W. & 13th St. N. - City of Wichita Disc at Southwest Corner of Intersection, 30.00'± S. of C of 13th St. N. 35.00'± W. of C of 135th St. W.
 Elev. = 1355.65 MSL

"□" Cut in Top of Curb 10' South of end of Existing Pavement, East Curb adjacent to Lot 12, Block D, Copper Gate North Addition.
 Elev. = 1362.13 MSL

BM Disc in top Curb adjacent to Fire Hydrant at E. End of N. Curb Return of Kiwi & Decker, adjacent to Lot 16, Block D, Copper Gate North Addition.
 Elev. = 1361.04 MSL



SCALE:
 1" = 40' HORIZONTAL
 1" = 5' VERTICAL
 • = IRON



		Silvertown Addition - Phase I LINE 5 & LINE 5A Sanitary Sewer Improvements	
		PROJECT NUMBER: 468-84243 DESIGN: NBW/JAK DRAWN: JAK APPROVED: DATE 5/01/07 SCALE: NOTED SHEET: 9 OF 22	
REVISIONS:		PROJECT INFORMATION: Baughman Company, P.A. 315 Ellis St. Wichita, KS 67211 P 316-262-7271 F 316-262-0149 ENGINEERING SURVEYING PLANNING LANDSCAPE ARCHITECTURE	
Silvertown Phase I\SSS		0608-E619	