

J:\PROJECTS\2019\10\10483\_COW\_WHEATLAND\_PLACE\_XXXXXX\CAD\SHOTS\06 CIVIL\PAV1\0483\_05\_2024.DWG  
 PLOTTED: Saturday, August 03, 2019 @ 10:35PM

PAVING & INCIDENTAL DRAINAGE FOR  
**WHEATLAND PLACE**  
 WICHITA, KANSAS

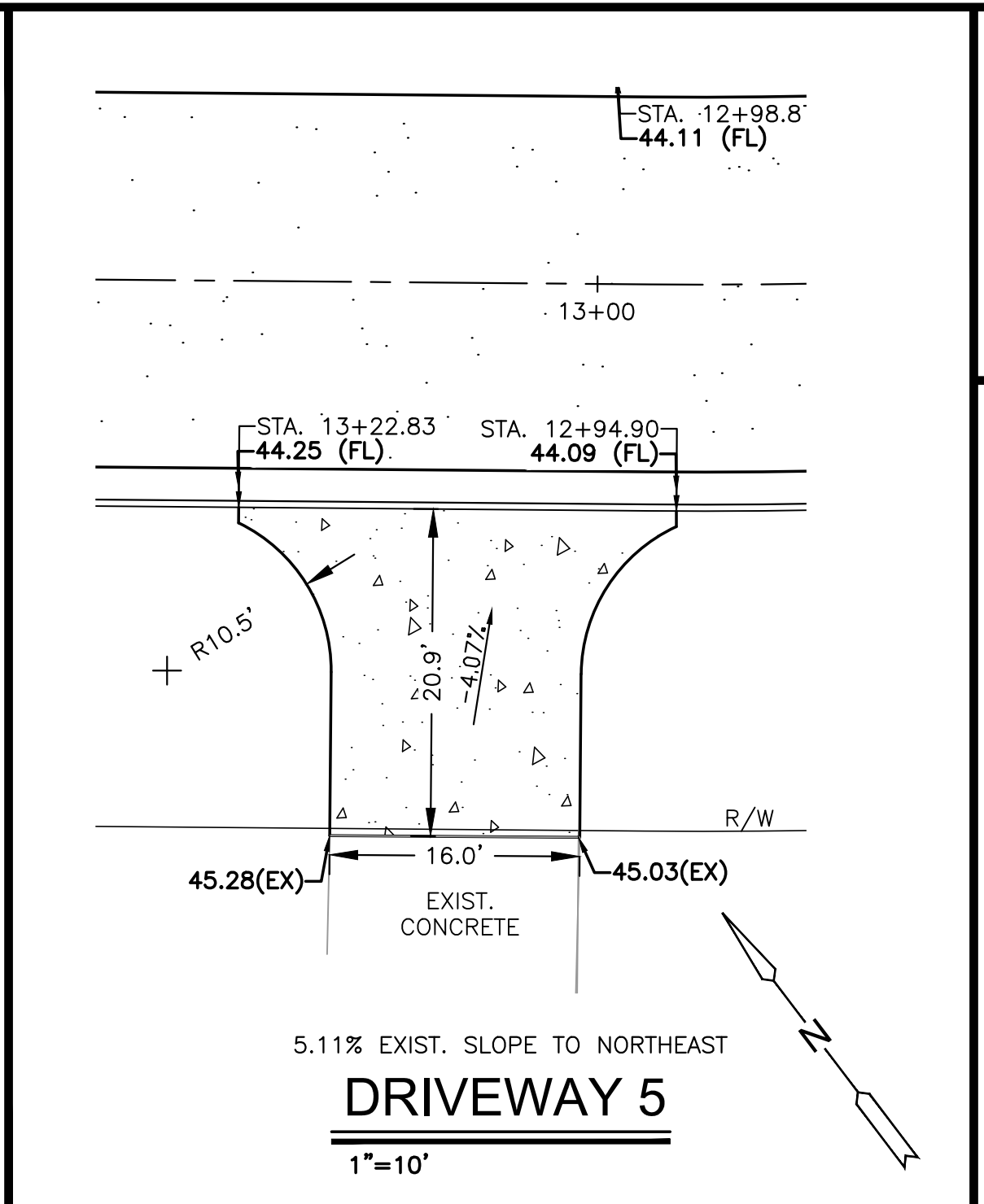
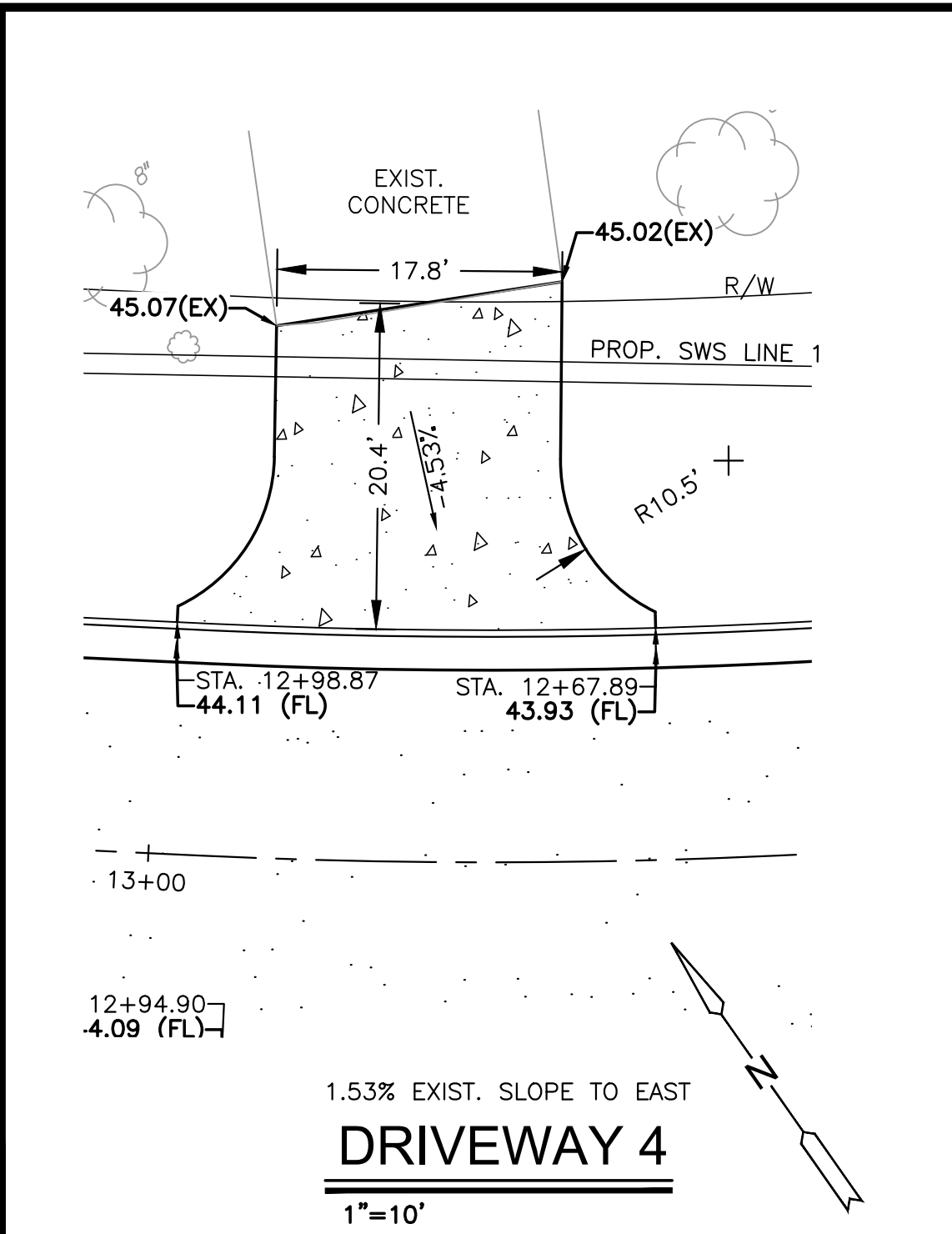
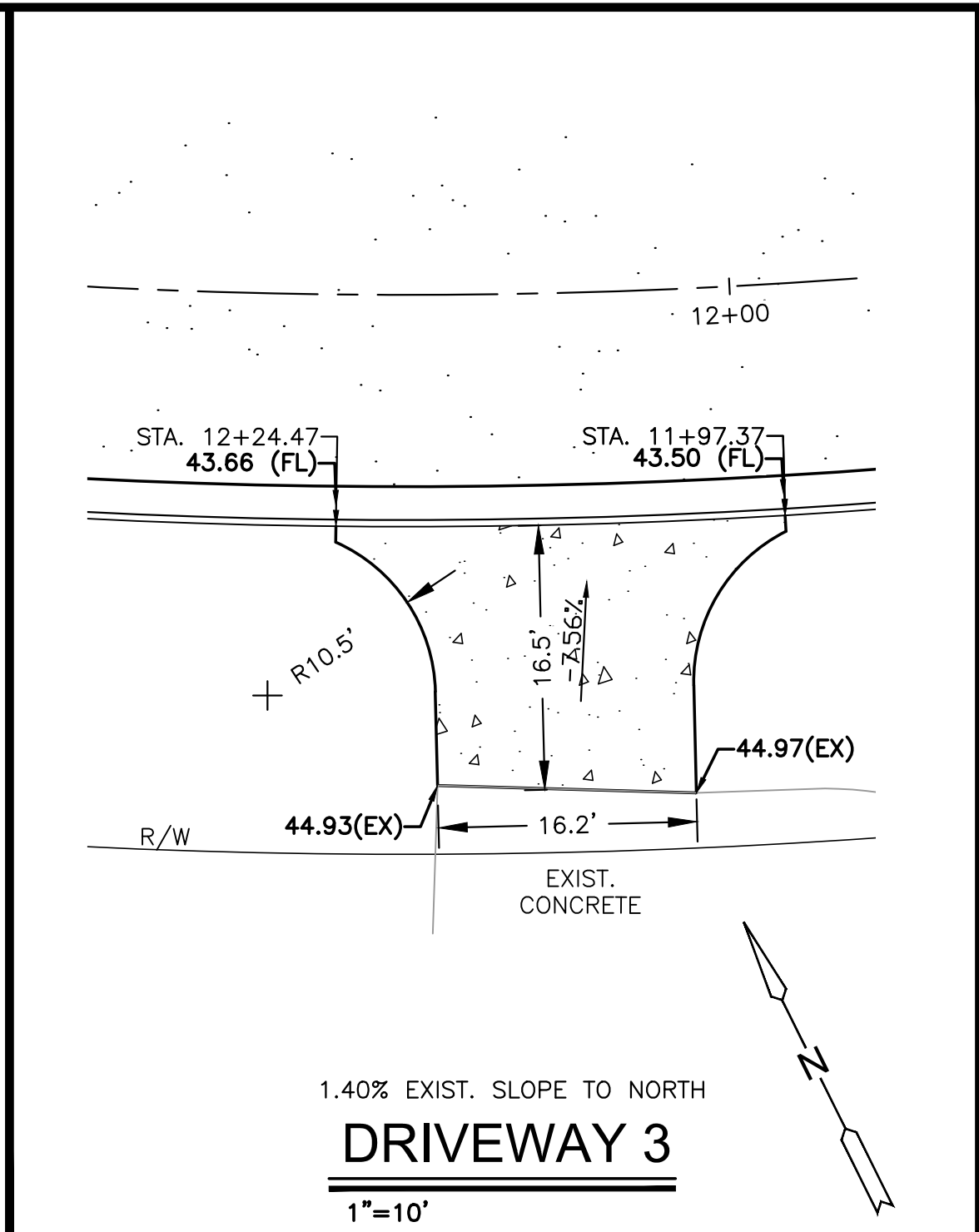
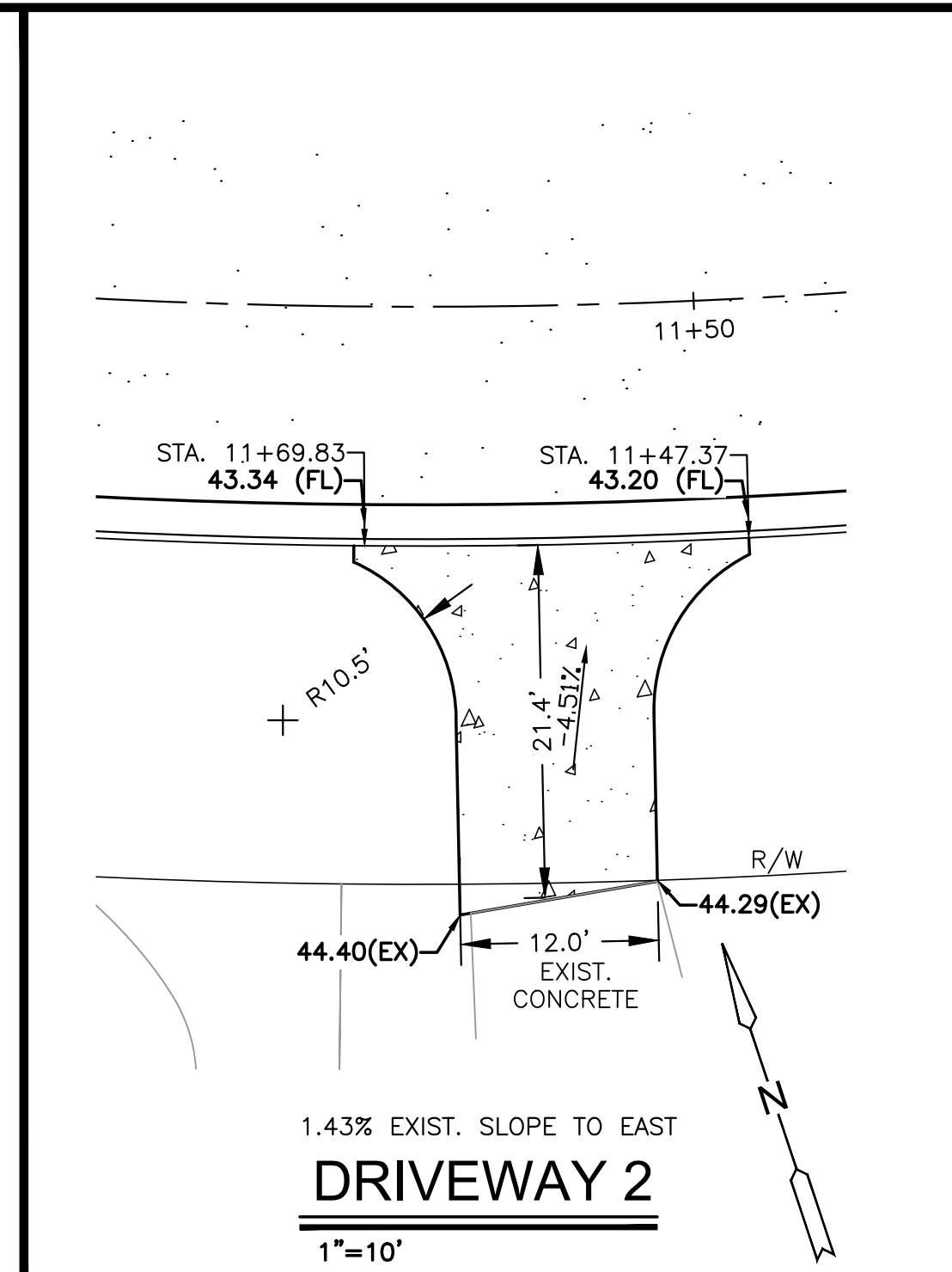
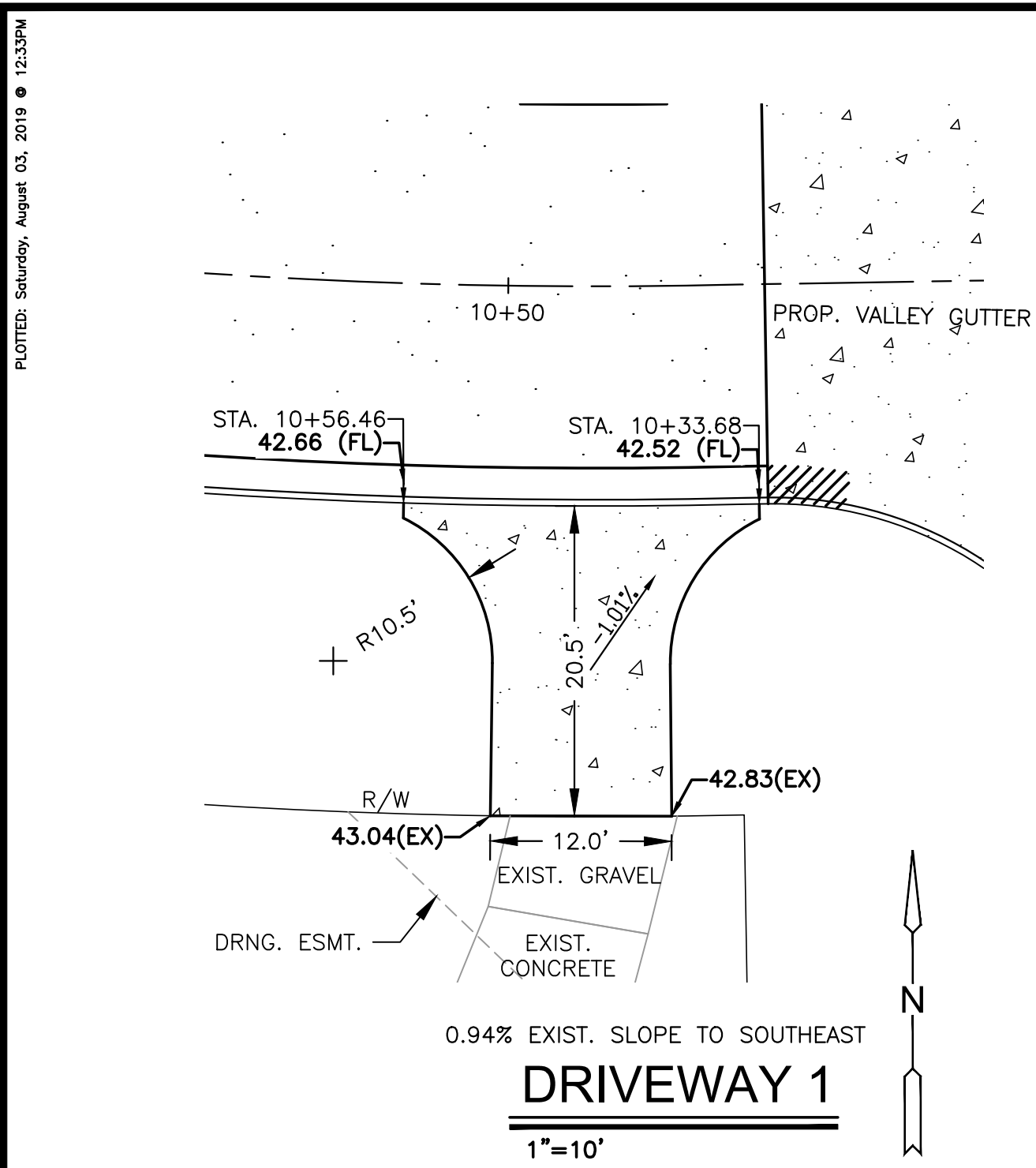
©2019  
 MKEC Engineering  
 All Rights Reserved  
 www.mkec.com  
 These drawings and their contents, including, but not limited to, all concepts, designs, & ideas are the exclusive property of MKEC Engineering (MKEC), and may not be used or reproduced in any way without the express consent of MKEC.

**DRIVEWAY DETAILS 1**

PROJECT NO.	472-2019-085544
DATE	AUG. 2019
SCALE	AS SHOWN
DESIGNED	CRM
DRAWN	CRM
CHECKED	KA

NO.	REVISION	DATE

SHEET NO. 11 OF 43



- NOTE:
- CONST. ALL 6" CONCRETE DRIVEWAYS PER C.O.W. DETAIL TO LIMITS SHOWN ON SHEETS 11-13.
  - PROP. SLOPES SHOWN ARE FROM EXIST. TO PROP. FLOW LINE
  - SEE NOTE 17 ON SHEET 1 FOR CURB AND GUTTER THROUGH DRIVEWAYS.
  - CONTRACTOR TO DELIVER AND HAVE ALL HOMEOWNERS SIGN "DRIVEWAY REQUEST FORM" BEFORE CONSTRUCTION BEGINS. CONTRACTOR SHALL CONTACT C.O.W IF UNABLE TO GET ALL THE HOMEOWNERS SIGNATURES.

