

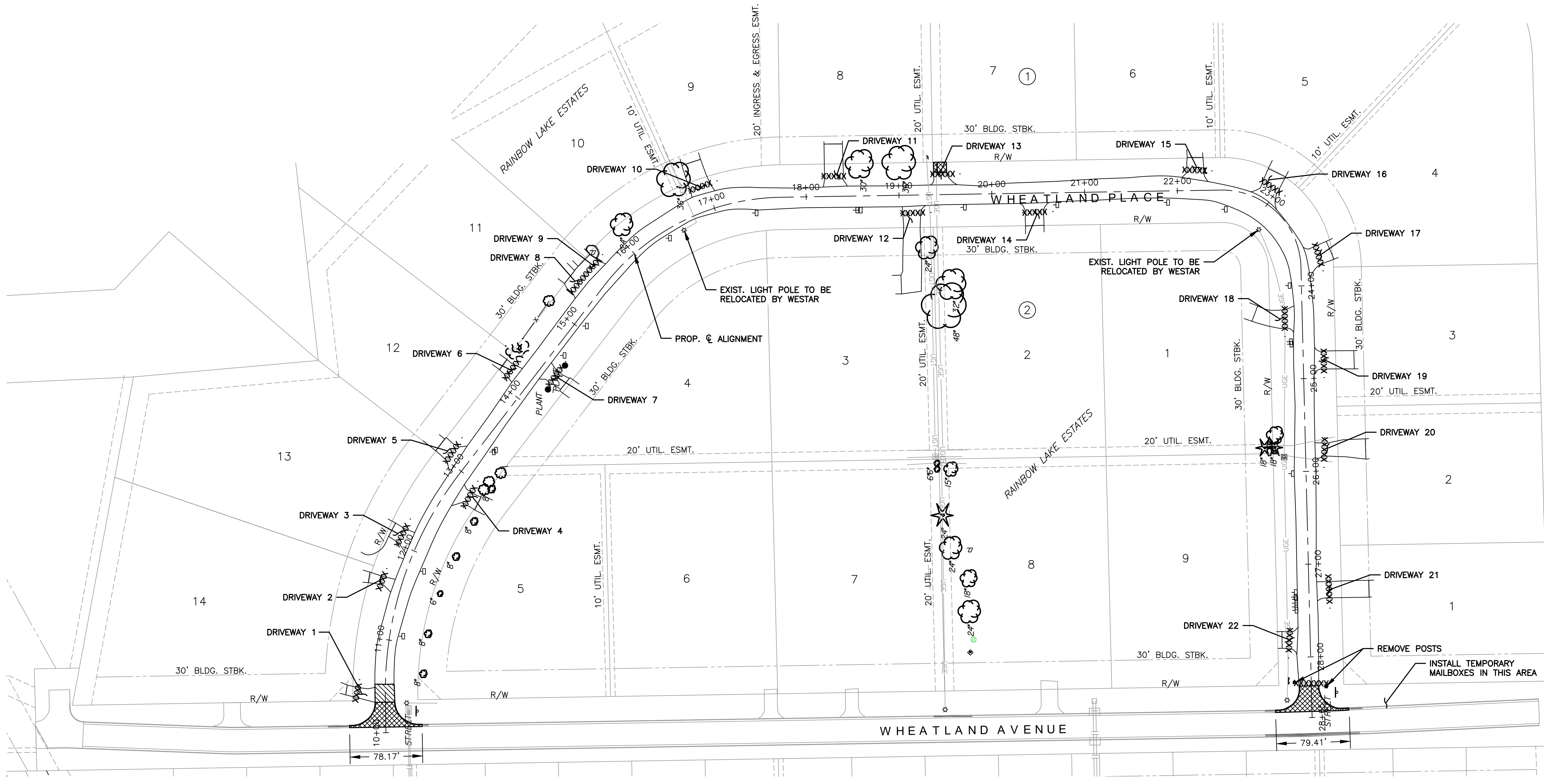
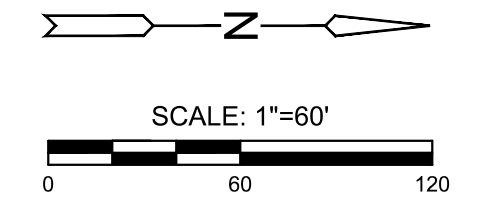
PLOTTED: Saturday, August 03, 2019 @ 12:50PM

J:\PROJECTS\2019\19010483_COW_WHEATLAND_PLACE_XXXXXX\CAD\SHOTS\6 CIVIL\PAV19483_05_2019.DWG

LEGEND

- STORMWATER SEWER
- UGE UNDERGROUND ELECTRICAL
- G GAS LINE
- UGT UNDERGROUND TELEPHONE
- XXXXXXXXXXXXXXXXXXXXX EXIST. SWS REMOVAL (INCLUDING HEADWALLS)
- [Hatched Box] ASPHALT REMOVAL
- [Cross-hatched Box] CONCRETE REMOVAL

- NOTE:**
- MAILBOXES TO BE RELOCATED TO TEMPORARY MAIL SERVICE AREA OR AREA APPROVED BY C.O.W. TO ENSURE CONSTANT MAIL SERVICE. CONTRACTOR TO RE-INSTALL MAIL BOXES ALONG "BLOCK 2" (INSIDE) BACK OF CURB DURING RESTORATION. IF MAILBOXES CAN'T BE RE-USED, CONTRACTOR TO REPLACE WITH SAME SIZE, STYLE, AND MATERIAL AS EXIST.
 - HOMEOWNERS ARE DIRECTED TO REMOVAL ALL LANDSCAPE TO BE SAVED BEFORE CONSTRUCTION UNLESS NOTED ON PLANS.
 - SAND ON EXIST. ROAD SHALL BE HAULED OFF AND BASE MATERIAL CAN BE USED TO FILL DITCHES. SEE NOTE 3 ON SHEET 14.



PAVING & INCIDENTAL DRAINAGE FOR
WHEATLAND PLACE
 WICHITA, KANSAS

©2019 MKEC Engineering All Rights Reserved www.mkec.com
 These drawings and their contents, including, but not limited to, all concepts, designs, & ideas are the exclusive property of MKEC Engineering (MKEC), and may not be used or reproduced in any way without the express consent of MKEC.

DEMOLITION PLAN

PROJECT NO.	472-2019-085544
DATE	AUG. 2019
SCALE	1"=60'
DESIGNED	CRM
DRAWN	CRM
CHECKED	KA

NO.	REVISION	DATE