

PLOTTED: Wednesday, December 11, 2019 @ 01:10:59 PM  
 J:\PROJECTS\2016\1501010491\_COW\_13TH STREET AT COWSKIN\_150491\_CAD\SHOTS\05-CIVIL\SWR\15491NTR1.DWG

**GENERAL NOTES**

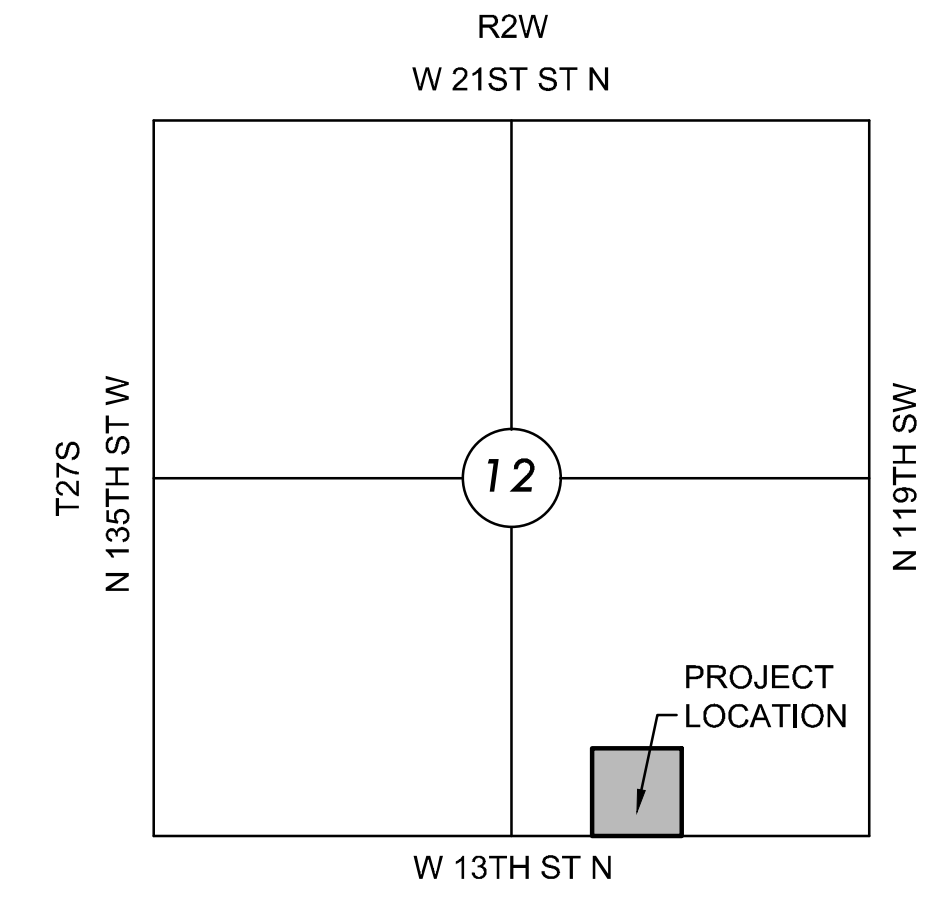
- THE CONTRACTOR SHALL COMPLY WITH ALL APPLICABLE SAFETY REGULATIONS. ALL CONSTRUCTION SHALL BE COMPLETED FOLLOWING CURRENT CITY STANDARD SPECIFICATIONS AND SPECIAL PROVISIONS.
- THE CONTRACTOR WILL BE REQUIRED TO PROVIDE NOTICE TO UTILITY COMPANIES A MINIMUM OF SEVENTY-TWO (72) HOURS PRIOR TO ANY EXCAVATION, AS FOLLOWS:  
 KANSAS ONE-CALL 687-2470  
 THE CONTRACTOR MUST NOTIFY THE FOLLOWING IN CASE OF AN EMERGENCY:  
 AT&T 1-316-246-8464  
 BLACK HILLS ENERGY (GAS) 1-800-694-8989  
 CITY OF WICHITA WATER 1-316-268-4555  
 CITY OF WICHITA SEWER 1-316-268-4073  
 CITY OF WICHITA STORMWATER 1-316-268-4090  
 CITY OF WICHITA TRAFFIC 1-316-268-4034  
 COX COMMUNICATIONS 1-888-249-3530  
 KANSAS GAS SERVICE 1-888-482-4950  
 WESTAR ENERGY 1-800-544-4857
- UTILITY SERVICE LINES, POLES, ETC. ARE TO BE ADJUSTED AS NECESSARY BY OTHERS PRIOR TO CONSTRUCTION UNLESS THE PLANS SPECIFICALLY CALL FOR THEIR ADJUSTMENT BY ITS OWNER DURING CONSTRUCTION. EXISTING UTILITIES AND THEIR LOCATION, AS SHOWN ON THE PLAN, REPRESENT THE BEST INFORMATION OBTAINABLE FOR DESIGN. THE CONTRACTOR WILL BE REQUIRED TO WORK AROUND EXISTING UTILITIES WITHIN THE RIGHT-OF-WAY WHICH DO NOT CONFLICT WITH PROPOSED CONSTRUCTION.
- RUBBLE FROM THE REMOVAL OF MISCELLANEOUS STRUCTURES AND EXCESS EXCAVATION WHICH IS TO BE WASTED SHALL BE DISPOSED OF ON SITES TO BE PROVIDED BY THE CONTRACTOR. THESE SITES SHALL BE APPROVED BY THE ENGINEER AS TO SUITABILITY, APPEARANCE AND SITE LOCATION. LOCATIONS, IN THE OPINION OF THE ENGINEER, THAT WILL LEAVE AN UNSIGHTLY APPEARANCE WILL NOT BE APPROVED. ALL DISPOSAL SITES MUST BE APPROVED BY THE KANSAS DEPARTMENT OF HEALTH AND ENVIRONMENT. MATERIAL EITHER STOCKPILED OR DISPOSED OF IN A FLOOD PLAIN WOULD REQUIRE A KANSAS STATE BOARD OF AGRICULTURE PERMIT. ANY MATERIAL DUMPED IN WATERS OF THE UNITED STATES OR WETLANDS IS SUBJECT TO U.S. CORPS OF ENGINEERS PERMITTING REGULATIONS. ANY MATERIAL BURIED OR STOCKPILED BEYOND APPROVED CONSTRUCTION LIMITS WOULD REQUIRE ADDITIONAL ARCHAEOLOGICAL INVESTIGATIONS UNLESS BURIED IN A PREVIOUSLY APPROVED BORROW LOCATION.
- TREES AND SHRUBS IN THE CONSTRUCTION AREA WHICH ARE IN DIRECT CONFLICT WITH PROPOSED NEW CONSTRUCTION SHALL BE REMOVED BY THE CONTRACTOR WITH THE ENGINEER'S APPROVAL. TREES AND SHRUBS WHICH ARE NOT IN DIRECT CONFLICT WITH PROPOSED NEW CONSTRUCTION SHALL BE SAVED AND PROTECTED FROM DAMAGE.
- THE CONTRACTOR SHALL GIVE ALL PROPERTY OWNERS AND/OR TENANTS OF PROPERTY ADJUTING THE CONSTRUCTION OF THIS PROJECT A MINIMUM OF TEN (10) DAYS NOTICE PRIOR TO START OF CONSTRUCTION.
- THE CONTRACTOR SHALL BE RESPONSIBLE FOR PRESERVING PROPERTY IRONS. THE CONTRACTOR WILL BE REQUIRED TO RE-ESTABLISH ANY PROPERTY IRONS WHICH ARE DAMAGED OR DESTROYED BY HIS CONSTRUCTION OPERATIONS. SUCH IRONS SHALL BE RE-ESTABLISHED BY A LICENSED LAND SURVEYOR IN ACCORDANCE WITH STATE LAWS.
- THE WATER DISTRIBUTION DIVISION SHALL FIELD LOCATE WATER VALVES ONE TIME DURING CONSTRUCTION WHEN REQUESTED BY THE CONTRACTOR. IT SHALL BE THE CONTRACTOR'S RESPONSIBILITY TO PRESERVE SUCH FIELD LOCATIONS DURING THE CONSTRUCTION PROCESS. WATER VALVES, VALVE BOXES OR FIRE HYDRANTS DAMAGED DURING CONSTRUCTION SHALL BE REPAIRED BY CONTRACTOR AT HIS OWN EXPENSE. VALVE BOXES AND WATER METERS WITHIN THE PROJECT LIMITS SHALL BE ADJUSTED TO MATCH FIELD GRADES.
- THE CONTRACTOR SHALL BE RESPONSIBLE FOR ALL TRAFFIC CONTROL MEASURES TO FACILITATE CONSTRUCTION. ALL CONSTRUCTION ZONE MARKINGS AND SIGNAGE SHALL CONFORM TO THE LATEST VERSION OF THE MANUAL ON UNIFORM TRAFFIC CONTROL DEVICES (MUTCD) AS PUBLISHED BY THE US DEPT. OF TRANSPORTATION, FEDERAL HIGHWAY ADMINISTRATION. ALL COSTS ASSOCIATED WITH CONSTRUCTION MARKINGS AND SIGNAGE SHALL BE THE CONTRACTOR'S RESPONSIBILITY.
- ALL AREAS DISTURBED DURING CONSTRUCTION THAT WILL NOT BE UNDER PROPOSED PAVEMENT SHALL BE SEEDED AND MULCHED. COST SHALL BE CONSIDERED SUBSIDIARY TO PROJECT SEEDING.
- EXISTING UTILITIES AND THEIR LOCATION, AS SHOWN ON THE PLANS REPRESENT THE BEST INFORMATION OBTAINABLE FOR DESIGN. LOCATION INFORMATION HAS BEEN OBTAINED FROM THE VARIOUS COMPANIES AND IS EITHER FROM COMPANY UTILITY DRAWINGS OR COMPANY PROVIDED FIELD LOCATIONS. THE PLAN LOCATIONS SHOWN ARE NOT GUARANTEED. ADDITIONAL EXISTING UTILITIES MAY ALSO BE ENCOUNTERED.

STORM WATER SEWER #697  
 TO SERVE  
**COWSKIN CREEK AT 13TH ST. N.**

PROJECT NO. 468-85055

THE CITY OF WICHITA, KANSAS  
 GARY JANZEN, P.E. - CITY ENGINEER

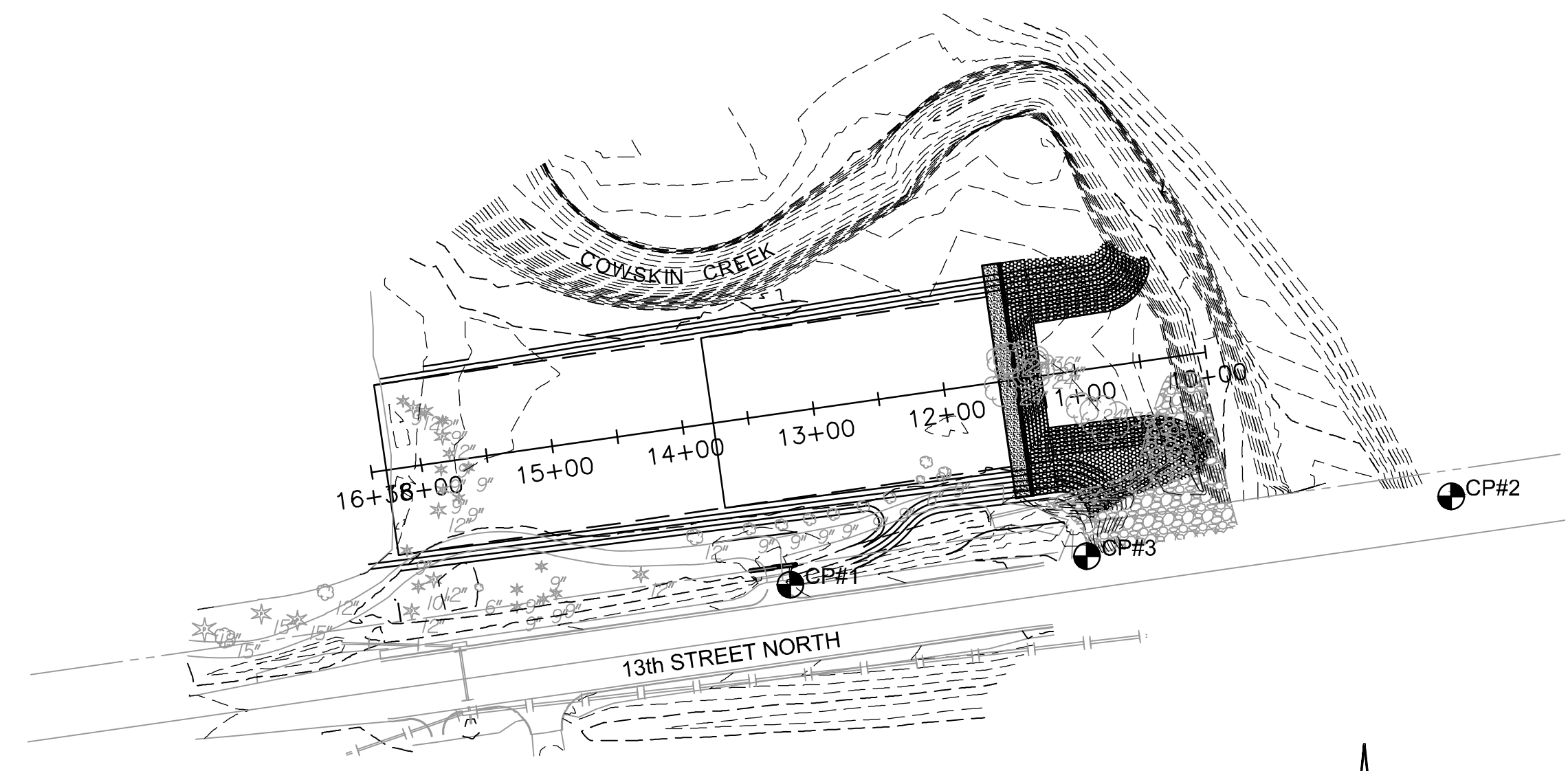
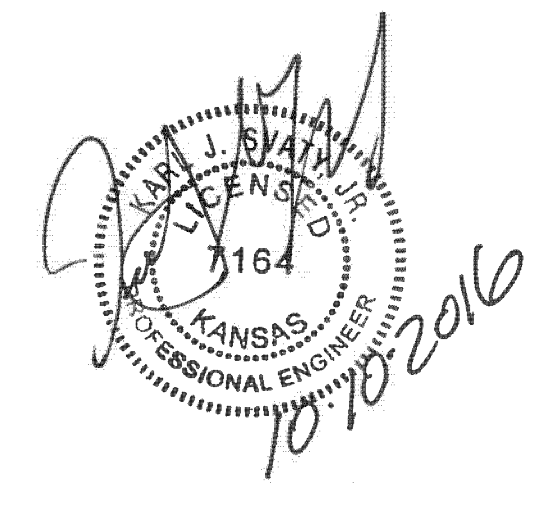
OCA NO. 706913  
**SWS-697**



**VICINITY MAP**  
 No Scale

**INDEX TO DRAWINGS**

SHEET NO.	DESCRIPTION
01	TITLE SHEET
02	CHANNEL PLAN AND PROFILE
03	WEIR DETAILS
04	GRADING PLAN
05	PIPE ACCESS GATE DETAIL
06	SIGNAGE DETAILS
07	TRAFFIC CONTROL PLAN
08-10	TRAFFIC CONTROL DETAILS
11	SITE RESTORATION PLAN
12	EROSION CONTROL PLAN
13-17	BMPs



**PROJECT CONTROL & INFORMATION**

DATUM:  
 1) THE PROJECT HORIZONTAL DATUM IS BASED ON THE NAD83, KANSAS STATE PLANE COORDINATE SYSTEM, SOUTH ZONE, (US SURVEY FEET DEFINITION), WITH A COMBINED ADJUSTMENT FACTOR (CAF) OF 1.000120014. ALL COORDINATE AND DIMENSIONS SHOWN ON THESE PLANS ARE MODIFIED TO GROUND VALUES.

THE FOLLOWING EQUATIONS CAN BE USED FOR CONVERSION:  
 GROUND COORDINATES TO STATE PLANE COORDINATES = GROUND X 1/CAF  
 STATE PLANE COORDINATES TO GROUND COORDINATES = STATE PLANE X CAF

2) THE VERTICAL DATUM USED IS NAVD88.

**CONTROL:**

**HORIZONTAL**

PT. NO.	NORTH	EAST	ELEV.	DESCRIPTION
CP#1	1693378.804	1605657.636	1338.076	CHISELED "X"
CP#2	1693445.780	1606158.091	1341.417	CHISELED "X"
CP#3	1693400.287	1605882.310	1342.538	BM (DESCRIPTION BELOW)
CP#4	1693557.908	1607148.801	1349.880	SE COR SEC 12
CP#100	1693181.972	1604606.208	1338.460	PK-NAIL
CP#101	1693061.474	1604632.138	1342.278	PK-NAIL

**VERTICAL**

BM - CHISELED SQUARE ON GUARD RAIL WALL AT THE NORTHWEST CORNER OF THE 13TH STREET BRIDGE OVER THE COWSKIN CREEK.  
 ELEVATION = 1342.53 (NAVD 88)

**UTILITIES:**

THE UNDERGROUND UTILITIES SHOWN HEREON WERE MARKED IN THE FIELD BY THE UTILITY OWNERS IN RESPONSE TO KANSAS ONE CALL TICKET NUMBER: 15367761 THE SURVEYOR MAKES NO GUARANTEE THAT THE UNDERGROUND UTILITIES SHOWN COMPRISE ALL SUCH UTILITIES IN THE AREA, EITHER IN SERVICE OR ABANDONED. THE SURVEYOR FURTHER DOES NOT WARRANT THAT THE UNDERGROUND UTILITIES SHOWN ARE IN THE EXACT LOCATION INDICATED ALTHOUGH HE DOES CERTIFY THAT THEY ARE LOCATED AS ACCURATELY AS POSSIBLE FROM INFORMATION AVAILABLE. THE SURVEYOR HAS NOT PHYSICALLY LOCATED THE UNDERGROUND UTILITIES.



STORM WATER SEWER PLAN FOR  
**COWSKIN CREEK AT 13TH ST. N.**  
 WICHITA, KANSAS

©2016 MKEC Engineering All Rights Reserved  
 www.mkec.com  
 These drawings and their contents, including, but not limited to, all concepts, designs, & ideas are the exclusive property of MKEC Engineering (MKEC), and may not be used or reproduced in any way without the express consent of MKEC.

**TITLE SHEET**

PROJECT NO.	468-85055	
DATE	OCT. 2016	
SCALE	AS SHOWN	
DESIGNED	DRAWN	CHECKED
BLB	LES	BLB

0	ISSUED FOR CONST.	10/10/16
NO.	REVISION	DATE

SHEET NO.