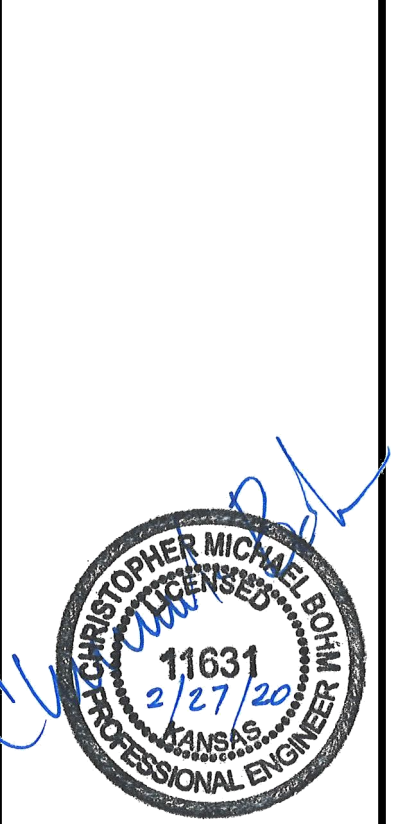




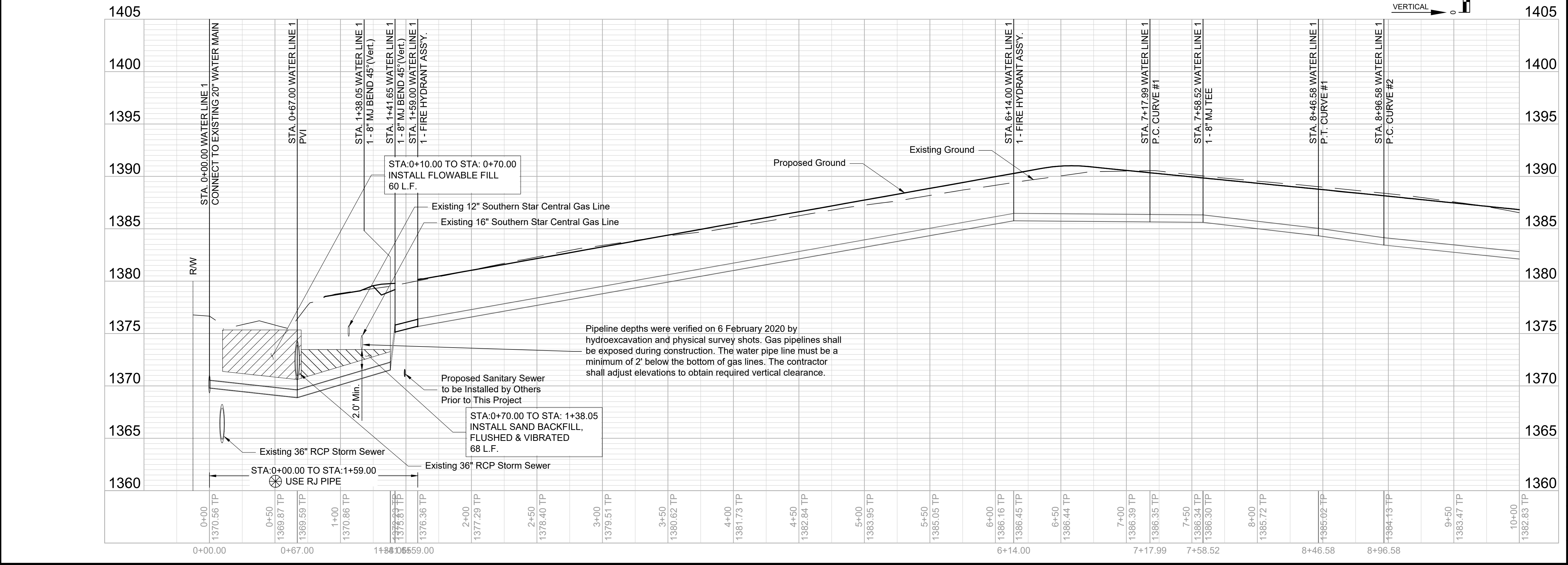
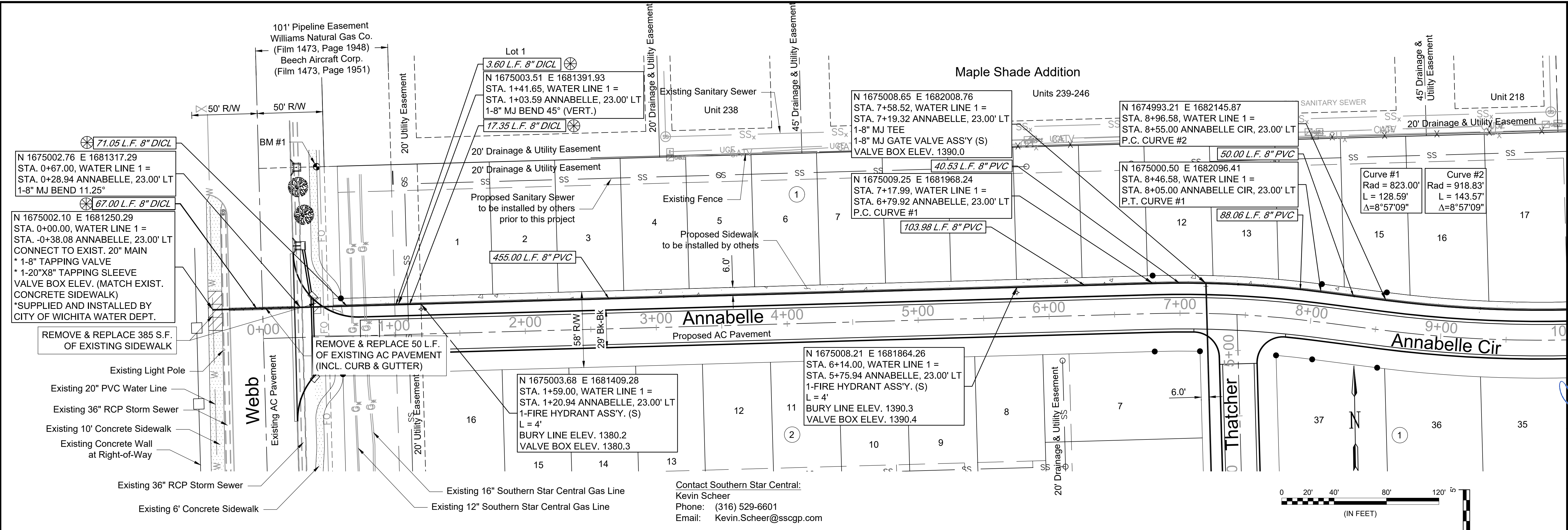
© 2020 GARVER, LLC
 THIS DOCUMENT, ALONG WITH THE IDEAS AND DESIGNS CONVEYED HEREIN, SHALL BE CONSIDERED INSTRUMENTS OF PROFESSIONAL SERVICE AND ARE PROPERTY OF GARVER, LLC. ANY USE, REPRODUCTION, OR DISTRIBUTION OF THIS DOCUMENT, ALONG WITH THE IDEAS AND DESIGN CONTAINED HEREIN, IS PROHIBITED UNLESS AUTHORIZED IN WRITING BY GARVER, LLC OR EXPLICITLY ALLOWED IN THE GOVERNING PROFESSIONAL SERVICES AGREEMENT FOR THIS WORK.



REV.	DATE	DESCRIPTION	BY
1	03/02/20	Moved bends, changed material for Sta.0+00-1+59	CDJ
2	04/14/20	Showed new entryway	CDJ



CITY OF WICHITA
 WICHITA, KS
 WATER LINE 1
 JOB NO.: 19T41021
 DATE: FEB 2019
 DESIGNED BY: CMB
 DRAWN BY: CDJ
 BAR IS ONE INCH ON ORIGINAL DRAWING
 IF NOT ONE INCH ON THIS SHEET, ADJUST SCALES ACCORDINGLY.
 DRAWING NUMBER
 SHEET NUMBER **3** OF 15



File: L:\2019\19T41021 - VCR Improvements\Drawings\C3DWATER\WATER LINE 1.dwg Last Save: 4/14/2020 1:38 PM Last saved by: Cdjurey
 Last plotted by: Jurey, Caleb D. Plot Date: 4/14/2020 1:38 PM Plotter used: None

Contact Southern Star Central:
 Kevin Scheer
 Phone: (316) 529-6601
 Email: Kevin.Scheer@sscgp.com

Pipeline depths were verified on 6 February 2020 by hydroexcavation and physical survey shots. Gas pipelines shall be exposed during construction. The water pipe line must be a minimum of 2' below the bottom of gas lines. The contractor shall adjust elevations to obtain required vertical clearance.