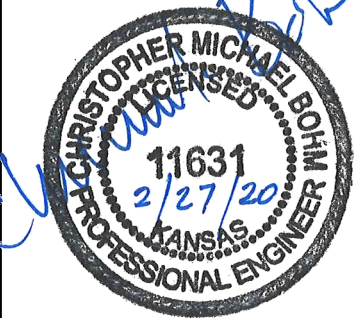
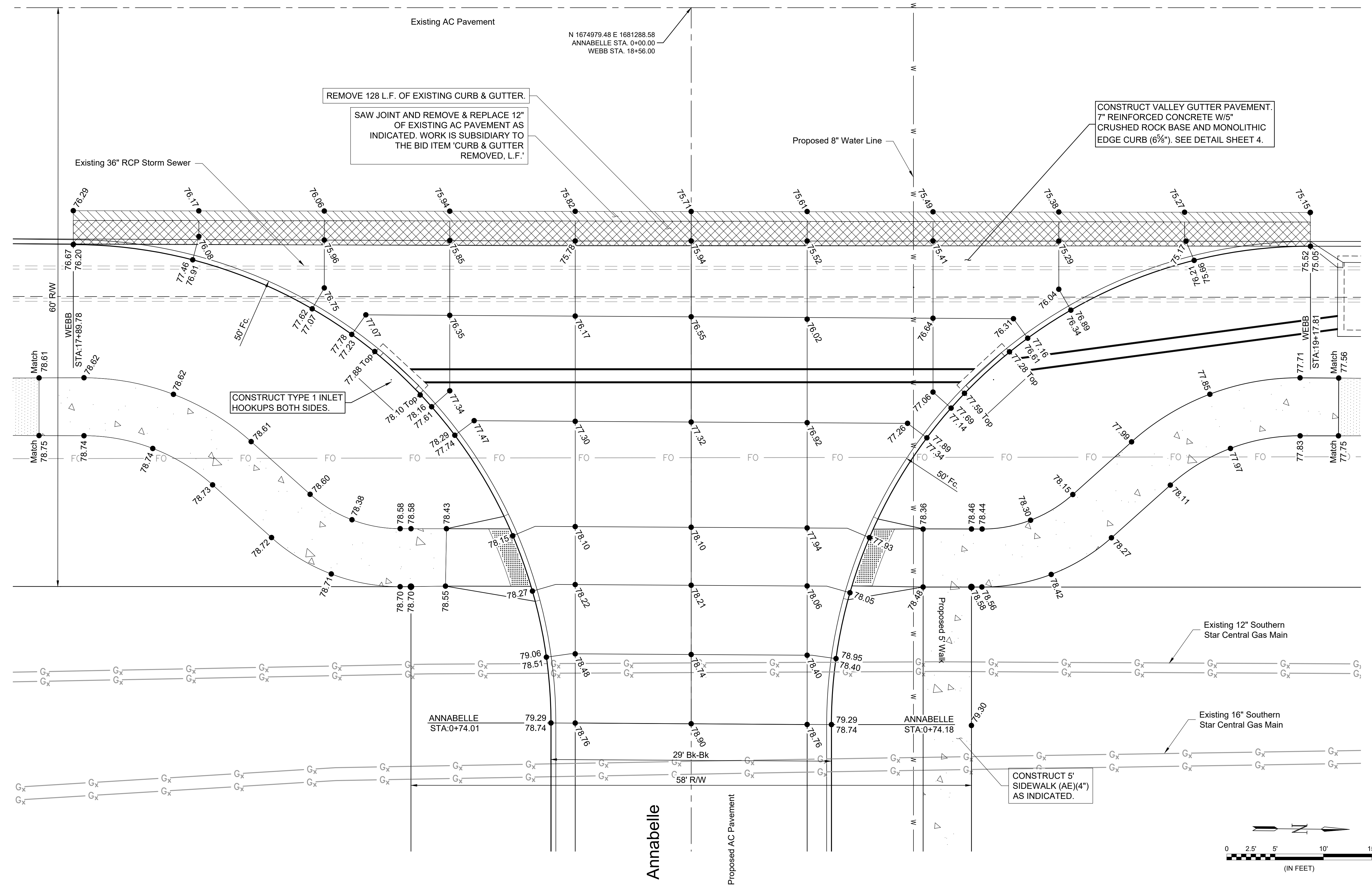




© 2020 GARVER, LLC  
 THIS DOCUMENT, ALONG WITH THE IDEAS AND DESIGNS CONVEYED HEREIN, SHALL BE CONSIDERED INSTRUMENTS OF PROFESSIONAL SERVICE AND ARE PROPERTY OF GARVER, LLC. ANY USE, REPRODUCTION, OR DISTRIBUTION OF THIS DOCUMENT, ALONG WITH THE IDEAS AND DESIGN CONTAINED HEREIN, IS PROHIBITED UNLESS AUTHORIZED IN WRITING BY GARVER, LLC OR EXPLICITLY ALLOWED IN THE GOVERNING PROFESSIONAL SERVICES AGREEMENT FOR THIS WORK.



# Webb Road

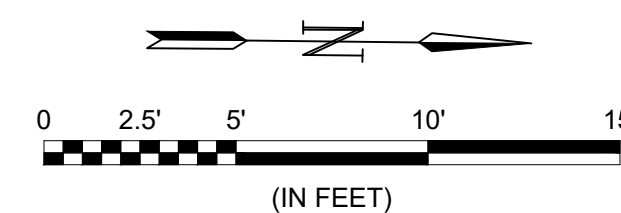


REMOVE 128 L.F. OF EXISTING CURB & GUTTER.  
 SAW JOINT AND REMOVE & REPLACE 12" OF EXISTING AC PAVEMENT AS INDICATED. WORK IS SUBSIDIARY TO THE BID ITEM 'CURB & GUTTER REMOVED, L.F.'

CONSTRUCT VALLEY GUTTER PAVEMENT. 7" REINFORCED CONCRETE W/5" CRUSHED ROCK BASE AND MONOLITHIC EDGE CURB (6%). SEE DETAIL SHEET 4.

CONSTRUCT TYPE 1 INLET HOOKUPS BOTH SIDES.

CONSTRUCT 5' SIDEWALK (AE)(4") AS INDICATED.



File: L:\2019\19T41021 - VCRC Improvements\Drawings\C3D\PAVING, DRAINAGE\ENTRYWAY & INTERSECTIONS.dwg Last Save: 4/6/2020 11:22 AM Last saved by: CjJurey  
 Last plotted by: Jurey, Caleb D. Plot Date: 4/6/2020 1:56 PM Plotter used: None

REV.	DATE	DESCRIPTION	BY
1	03/05/20	Steepened Annabelle slope. Altered walk alignment.	CDJ
2	04/06/20	Changed radii to 50'. Altered walk alignment.	CDJ

CITY OF WICHITA  
 WICHITA, KANSAS  
 CHALET RIDGE ADDITION  
 WICHITA, KS  
 PAVING

## INTERSECTION GRADING

JOB NO.: 19T41021  
 DATE: FEB 2020  
 DESIGNED BY: CMB  
 DRAWN BY: CDJ

BAR IS ONE INCH ON ORIGINAL DRAWING  
 IF NOT ONE INCH ON THIS SHEET, ADJUST SCALES ACCORDINGLY.  
 DRAWING NUMBER  
 SHEET NUMBER **17A** OF **47**