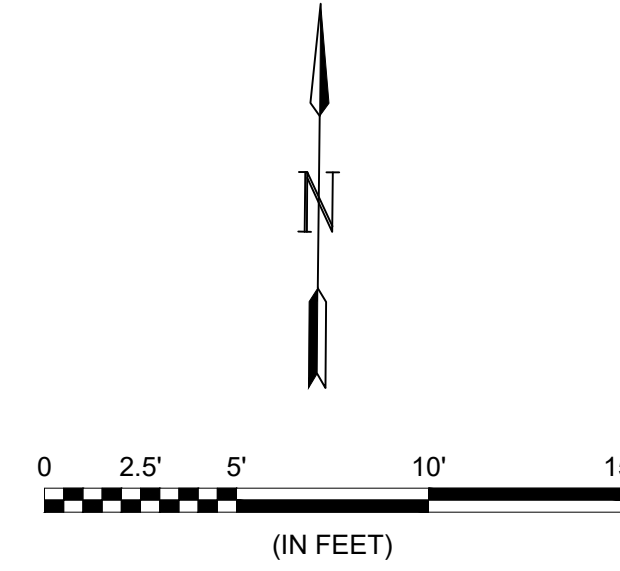
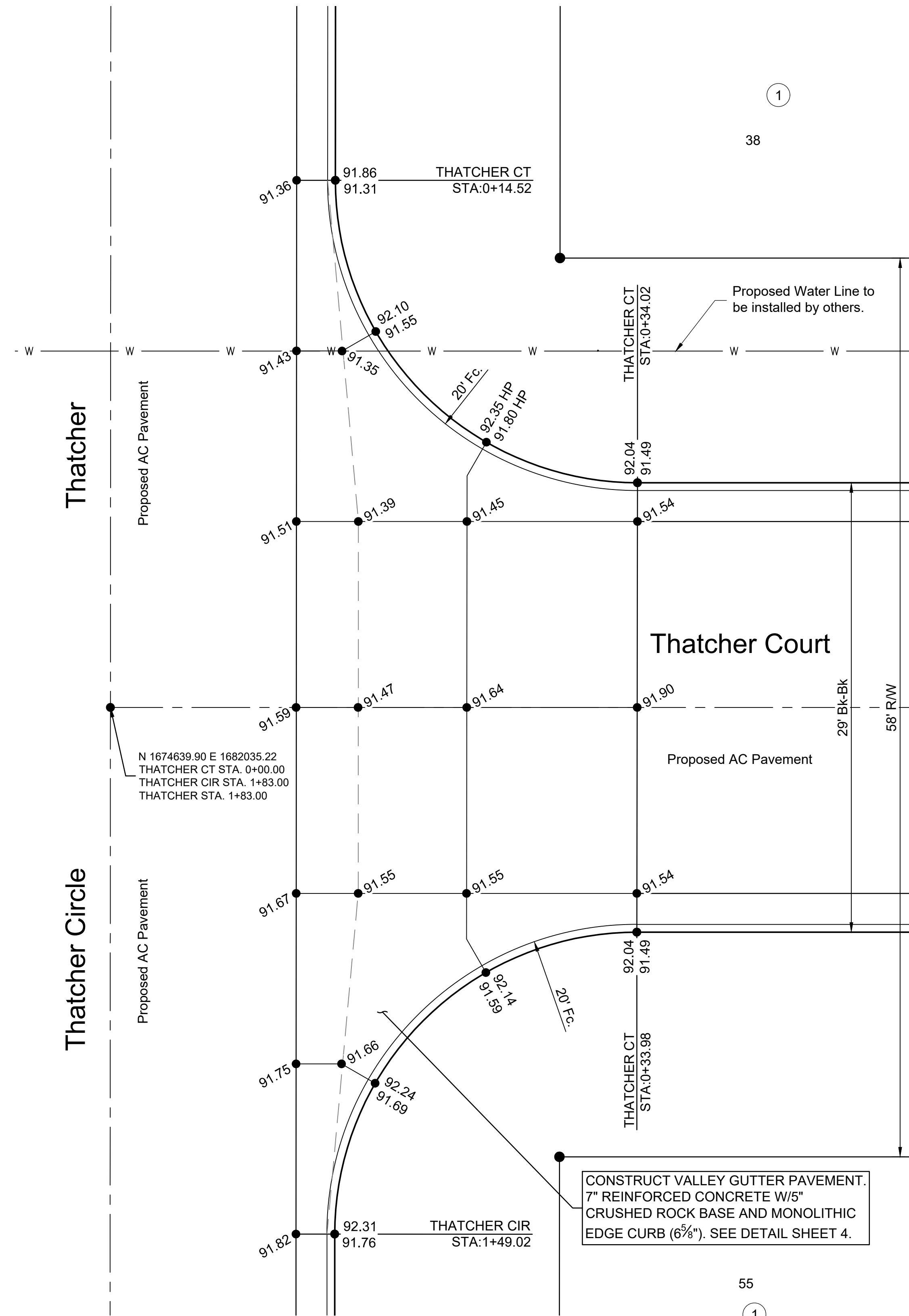


File: L:\2019\19141021 - VCRC Improvements\Drawings\C3D\PAVING\_DRAINAGE\ENTRYWAY & INTERSECTIONS.dwg Last Save: 4/2/2020 11:28 AM Last saved by: CjJurey  
 Last plotted by: Jurey, Caleb D. Plot Style: --- Plot Scale: 1:2,565 Plot Date: 4/2/2020 11:55 AM Plotter used: None



© 2020 GARVER, LLC  
 THIS DOCUMENT, ALONG WITH THE IDEAS AND DESIGNS CONVEYED HEREIN, SHALL BE CONSIDERED INSTRUMENTS OF PROFESSIONAL SERVICE AND ARE PROPERTY OF GARVER, LLC. ANY USE, REPRODUCTION, OR DISTRIBUTION OF THIS DOCUMENT, ALONG WITH THE IDEAS AND DESIGN CONTAINED HEREIN, IS PROHIBITED UNLESS AUTHORIZED IN WRITING BY GARVER, LLC OR EXPLICITLY ALLOWED IN THE GOVERNING PROFESSIONAL SERVICES AGREEMENT FOR THIS WORK.



REV.	DATE	DESCRIPTION	BY
1	03/05/20	Steepened Annabelle slope. Altered walk alignment.	CDJ
2	04/02/20	Separated Annabelle and Thatcher sheets	CDJ



CITY OF WICHITA  
 WICHITA, KANSAS  
 CHALET RIDGE ADDITION  
 PAVING

**INTERSECTION GRADING**

JOB NO.: 19T41021  
 DATE: FEB 2020  
 DESIGNED BY: CMB  
 DRAWN BY: CDJ

BAR IS ONE INCH ON ORIGINAL DRAWING  
 IF NOT ONE INCH ON THIS SHEET, ADJUST SCALES ACCORDINGLY.

DRAWING NUMBER  
 -----

SHEET NUMBER **17B** OF **47**