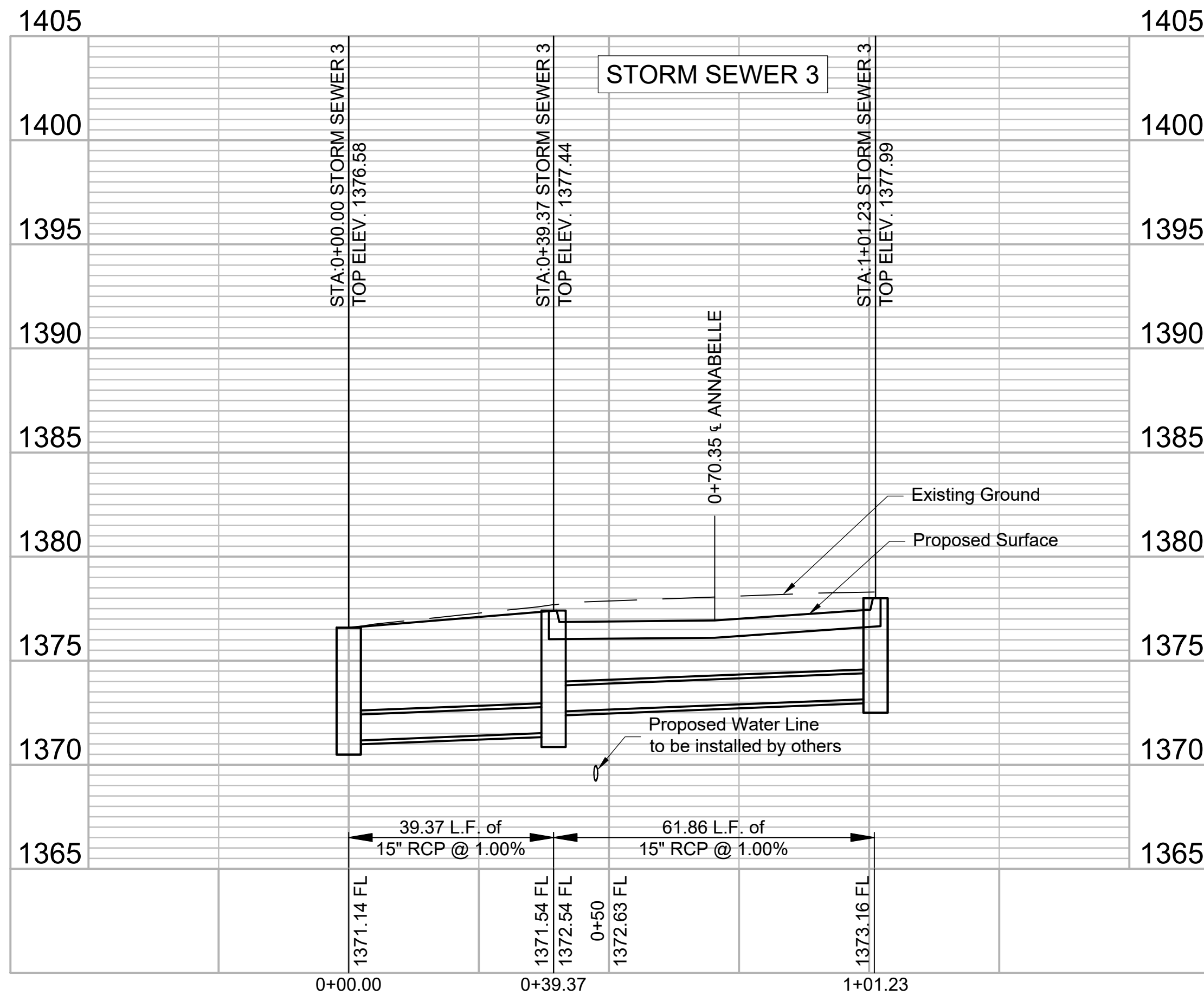
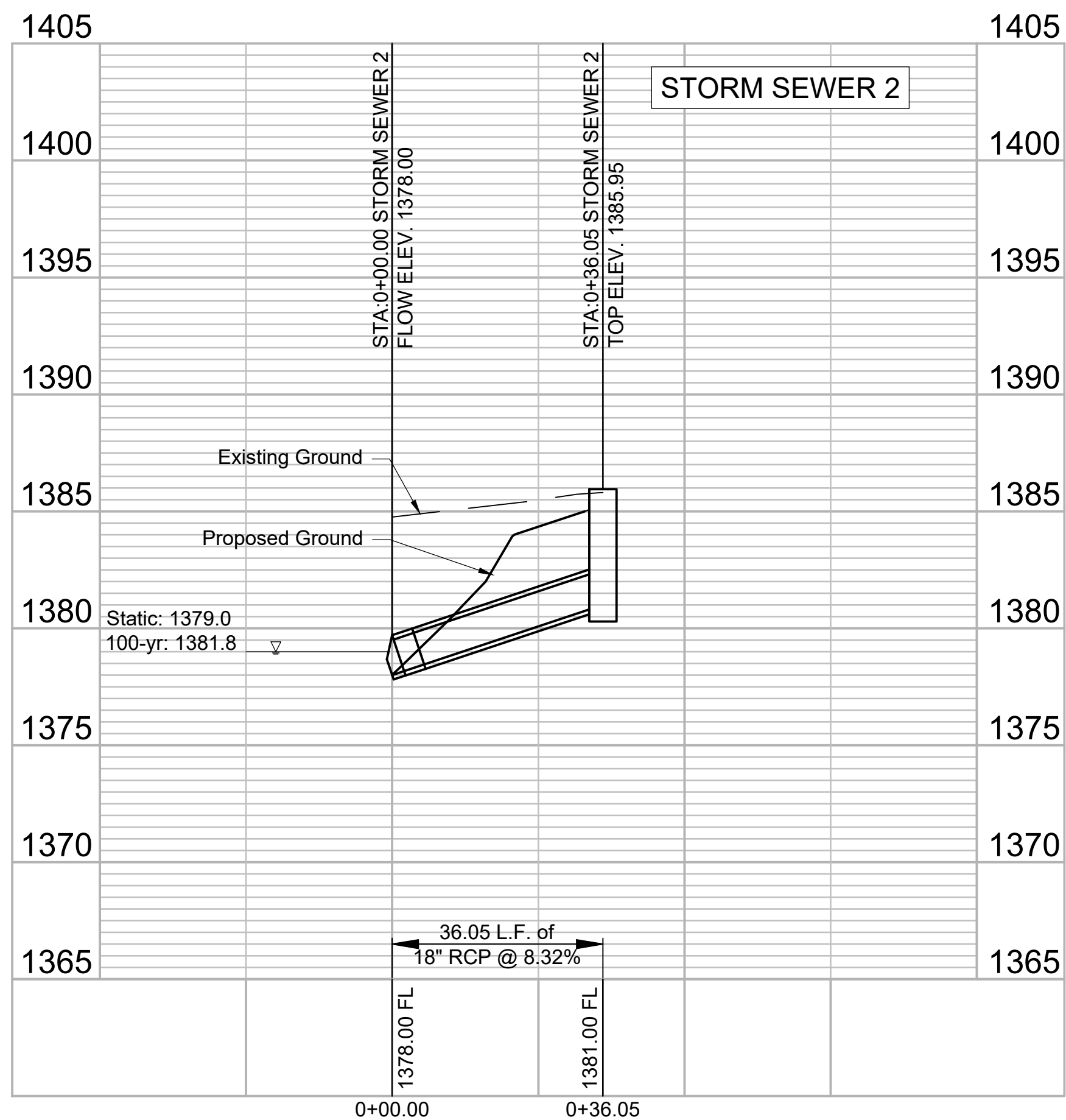
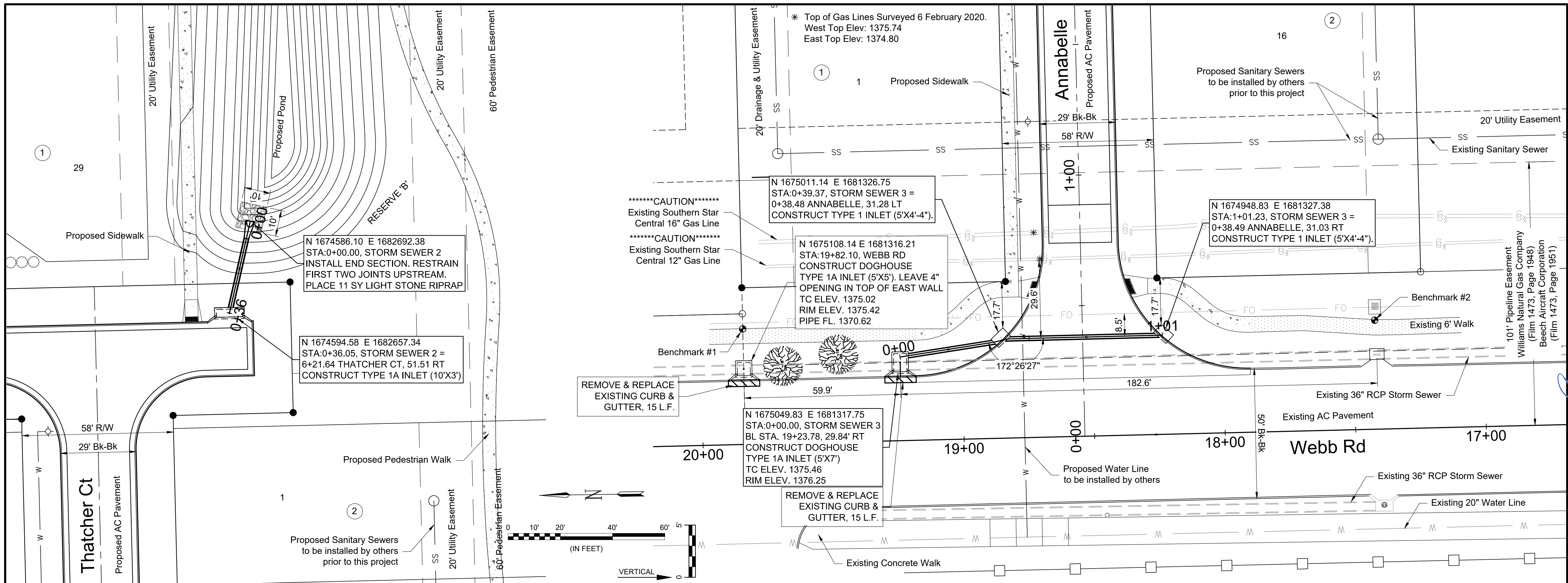




File: L:\2019\19141021 - VCRC Improvements\Drawings\C3DPAVING_DRAINAGE\STORM SEWER 3.dwg Last Save: 4/14/2020 11:59 AM Last saved by: Cdjurey
 Last plotted by: Jurey, Caleb D. Plot Date: 4/14/2020 11:59 AM Plotter Used: None




CAUTION!!!
 Southern Star Central Gas Mains are in the vicinity. Contact Kevin Scheer to coordinate construction.
 Phone: (316) 529-6601
 E-mail: Kevin.Scheer@sscgp.com



© 2020 GARVER, LLC
 THIS DOCUMENT, ALONG WITH THE IDEAS AND DESIGNS CONVEYED HEREIN, SHALL BE CONSIDERED INSTRUMENTS OF PROFESSIONAL SERVICE AND ARE PROPERTY OF GARVER, LLC. ANY USE, REPRODUCTION, OR DISTRIBUTION OF THIS DOCUMENT, ALONG WITH THE IDEAS AND DESIGN CONTAINED HEREIN, IS PROHIBITED UNLESS AUTHORIZED IN WRITING BY GARVER, LLC OR EXPLICITLY ALLOWED IN THE GOVERNING PROFESSIONAL SERVICES AGREEMENT FOR THIS WORK.



REV.	DATE	DESCRIPTION	BY
1	02/28/20	Shifted pipe west 10'	CDJ
2	03/05/20	Moved SWS 15' from gas line	CDJ
3	04/06/20	Changed SWS 3, rotated N direction	CDJ



CITY OF WICHITA
 WICHITA, KANSAS
 CHALET RIDGE ADDITION
 DRAINAGE

STORM SEWERS 2 & 3

JOB NO.: 19T41021
 DATE: FEB 2020
 DESIGNED BY: CMB
 DRAWN BY: CDJ

BAR IS ONE INCH ON ORIGINAL DRAWING
 IF NOT ONE INCH ON THIS SHEET, ADJUST SCALES ACCORDINGLY.

DRAWING NUMBER: *****

SHEET NUMBER **28** OF **47**