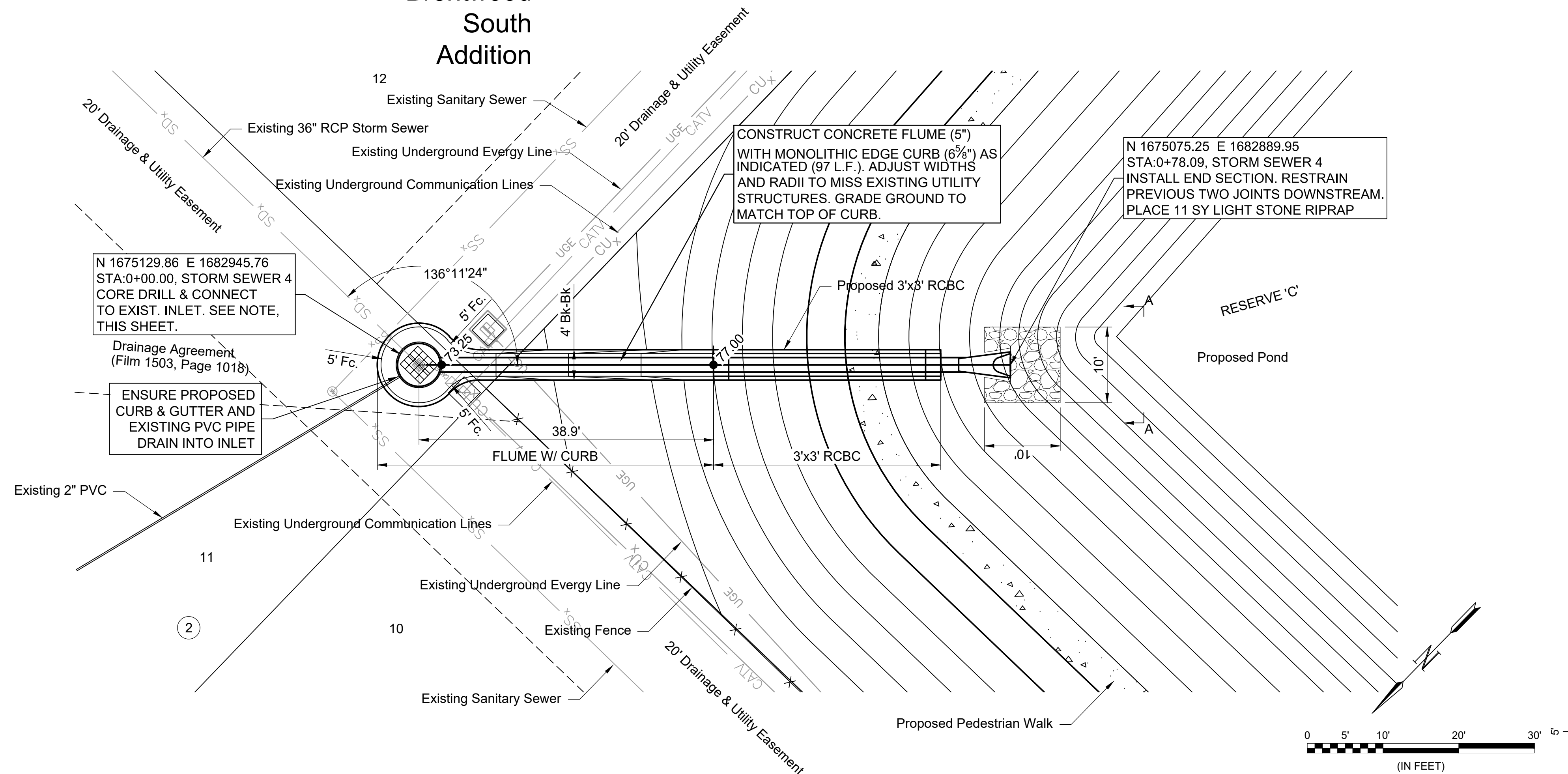
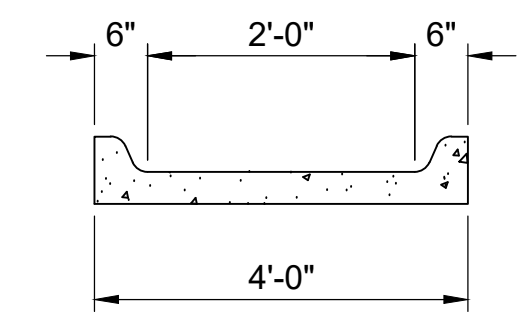


Brentwood South Addition

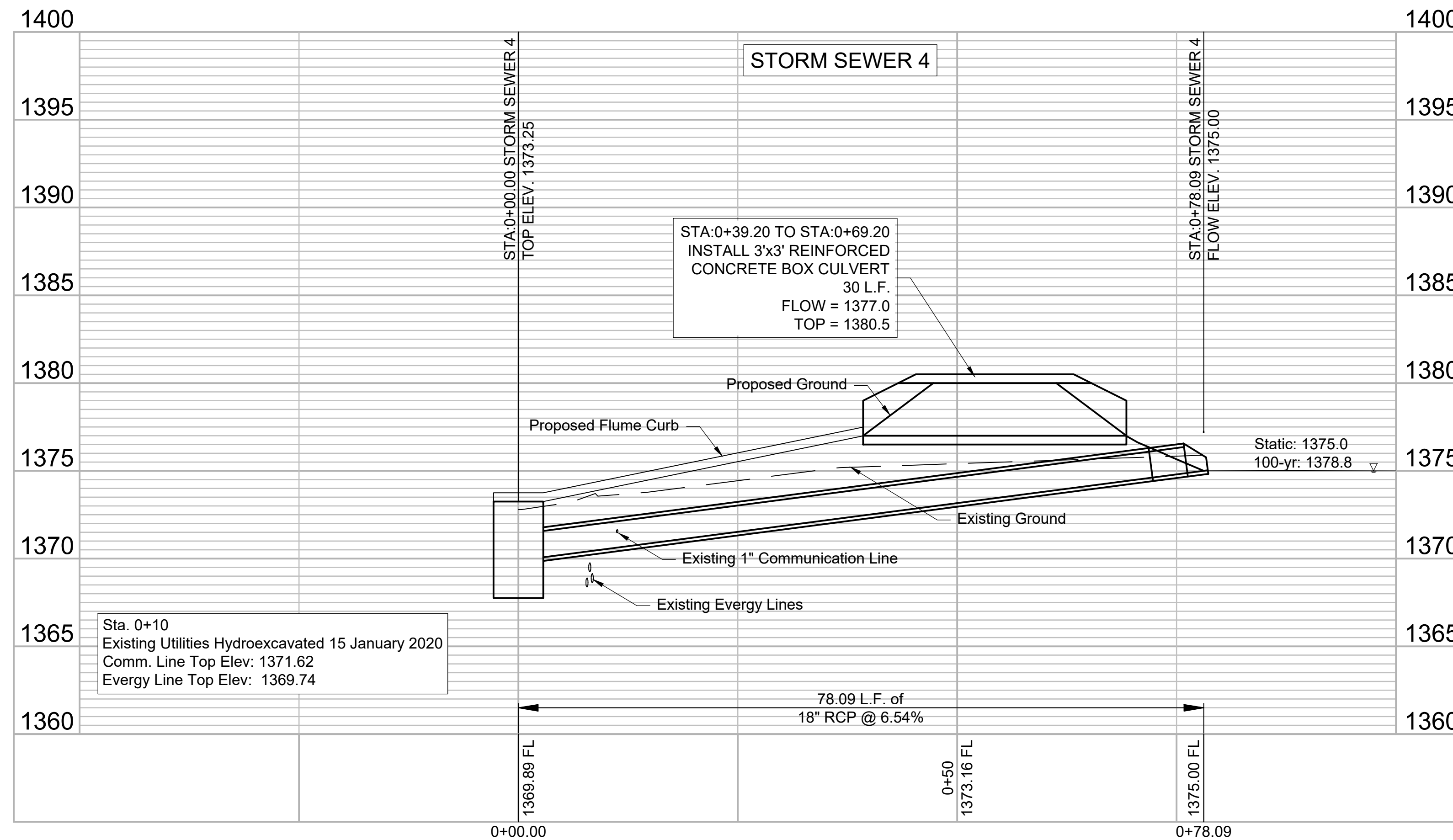


Note:
The contractor shall coordinate with Evergy prior to installation of Storm Sewer 4. Evergy requires a minimum of three (3) full weeks advance notice prior to construction. Evergy will remove and reset the existing transformer at their own expense. This construction activity will allow the contractor a window of time to connect to the existing inlet. This window of time is seven (7) hours, and shall not exceed one (1) full business day. If the contractor fails to coordinate with Evergy, give sufficient advance notice, or connect to the inlet in a timely manner, all associated costs shall be the contractor's responsibility.

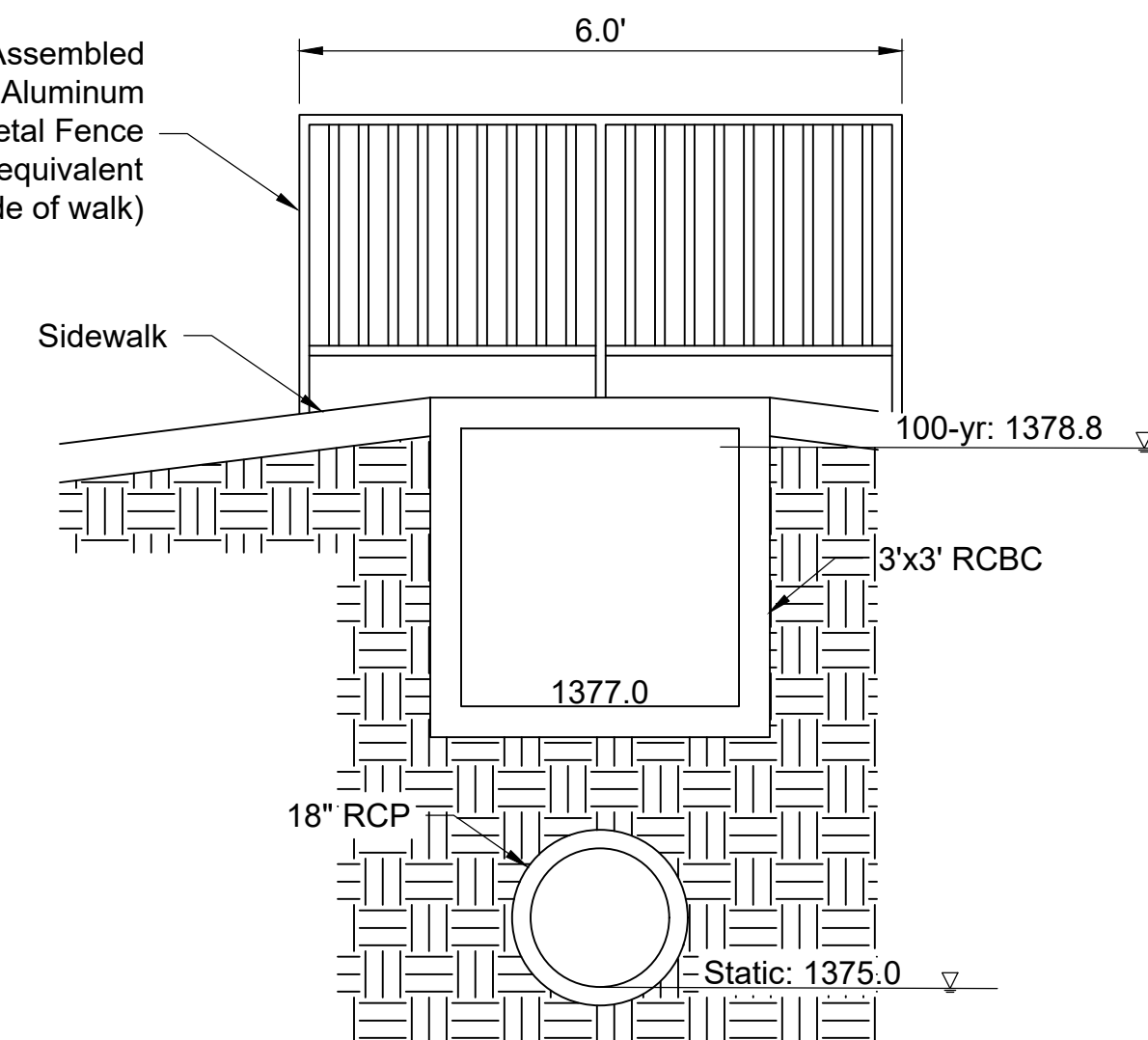
Contact information:
Kevin Rieschick
Office Phone: (316) 261-6217
Cell Phone: (785) 410-2986
E-mail: kevin.rieschick@evergy.com



Concrete Flume Detail



Lowe's Freedom Pre-Assembled New Haven Black Aluminum Flat-Top Decorative Metal Fence Panel or approved equivalent (Installed on each side of walk)



Section A-A



© 2020 GARVER, LLC
THIS DOCUMENT, ALONG WITH THE IDEAS AND DESIGNS CONVEYED HEREIN, SHALL BE CONSIDERED INSTRUMENTS OF PROFESSIONAL SERVICE AND ARE PROPERTY OF GARVER, LLC. ANY USE, REPRODUCTION, OR DISTRIBUTION OF THIS DOCUMENT, ALONG WITH THE IDEAS AND DESIGN CONTAINED HEREIN, IS PROHIBITED UNLESS AUTHORIZED IN WRITING BY GARVER, LLC OR EXPLICITLY ALLOWED IN THE GOVERNING PROFESSIONAL SERVICES AGREEMENT FOR THIS WORK.



REV.	DATE	DESCRIPTION	BY



CITY OF WICHITA
WICHITA, KANSAS
CHALET RIDGE ADDITION
DRAINAGE

STORM SEWER 4

JOB NO.: 19T41021
DATE: FEB 2020
DESIGNED BY: CMB
DRAWN BY: CDJ

BAR IS ONE INCH ON ORIGINAL DRAWING
IF NOT ONE INCH ON THIS SHEET, ADJUST SCALES ACCORDINGLY.

DRAWING NUMBER

SHEET NUMBER **29** OF **47**