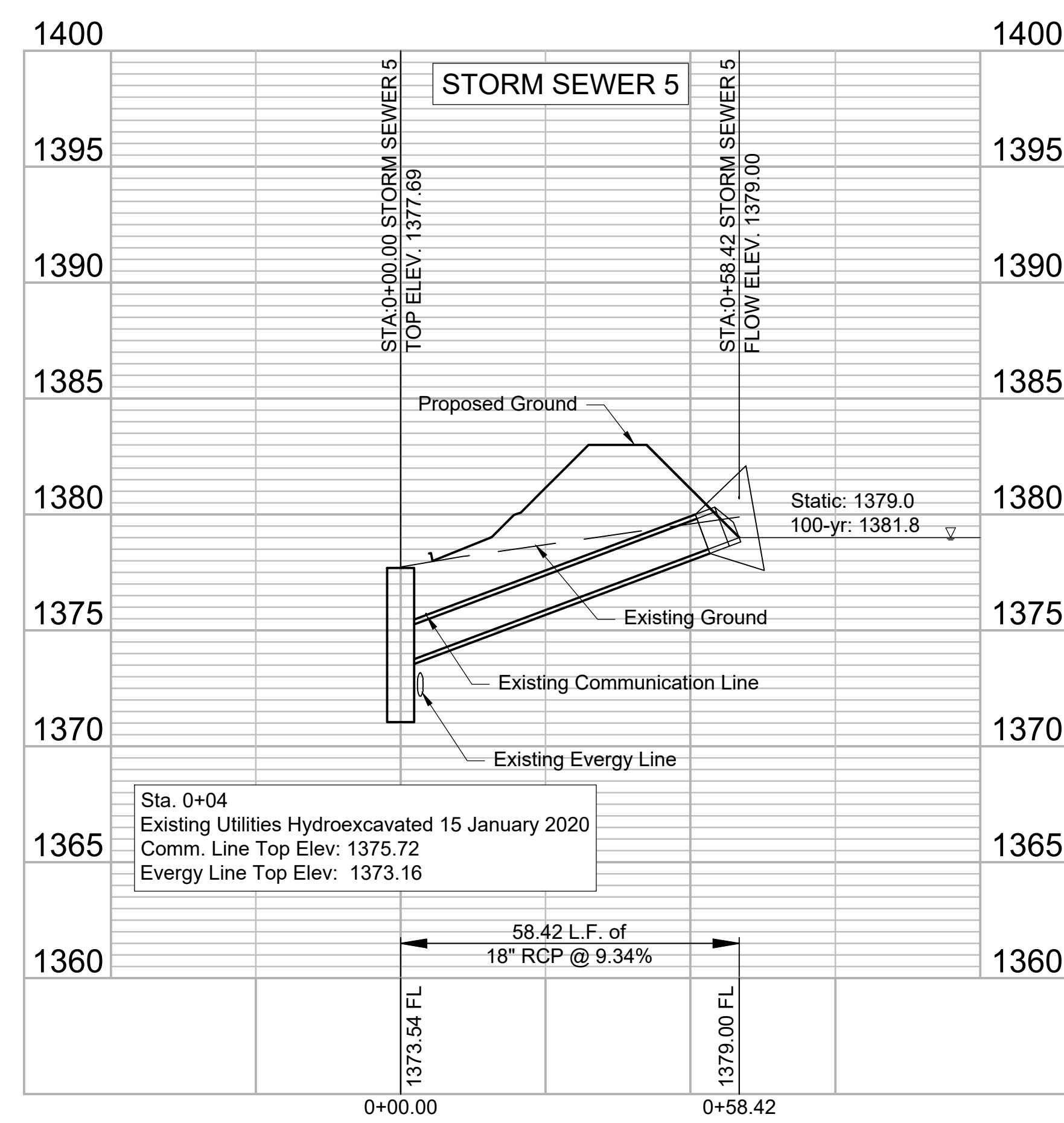
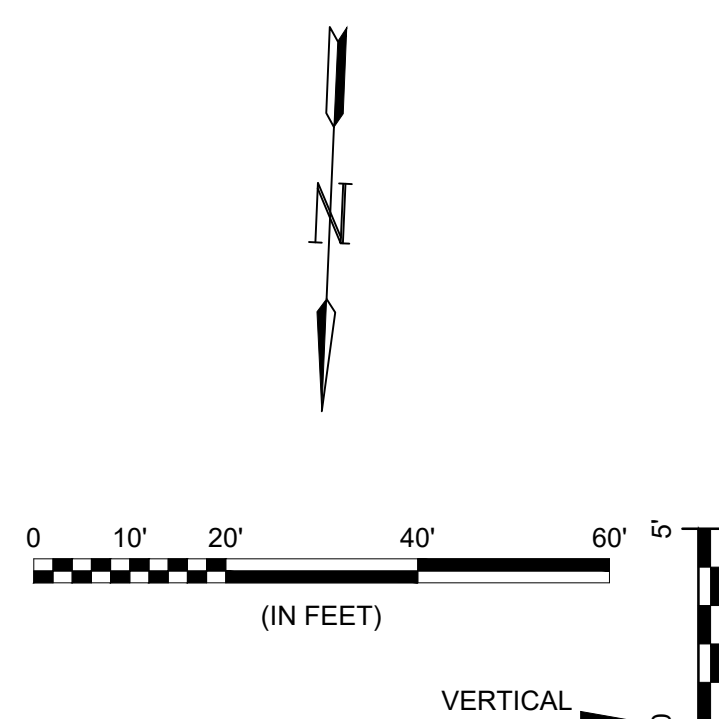
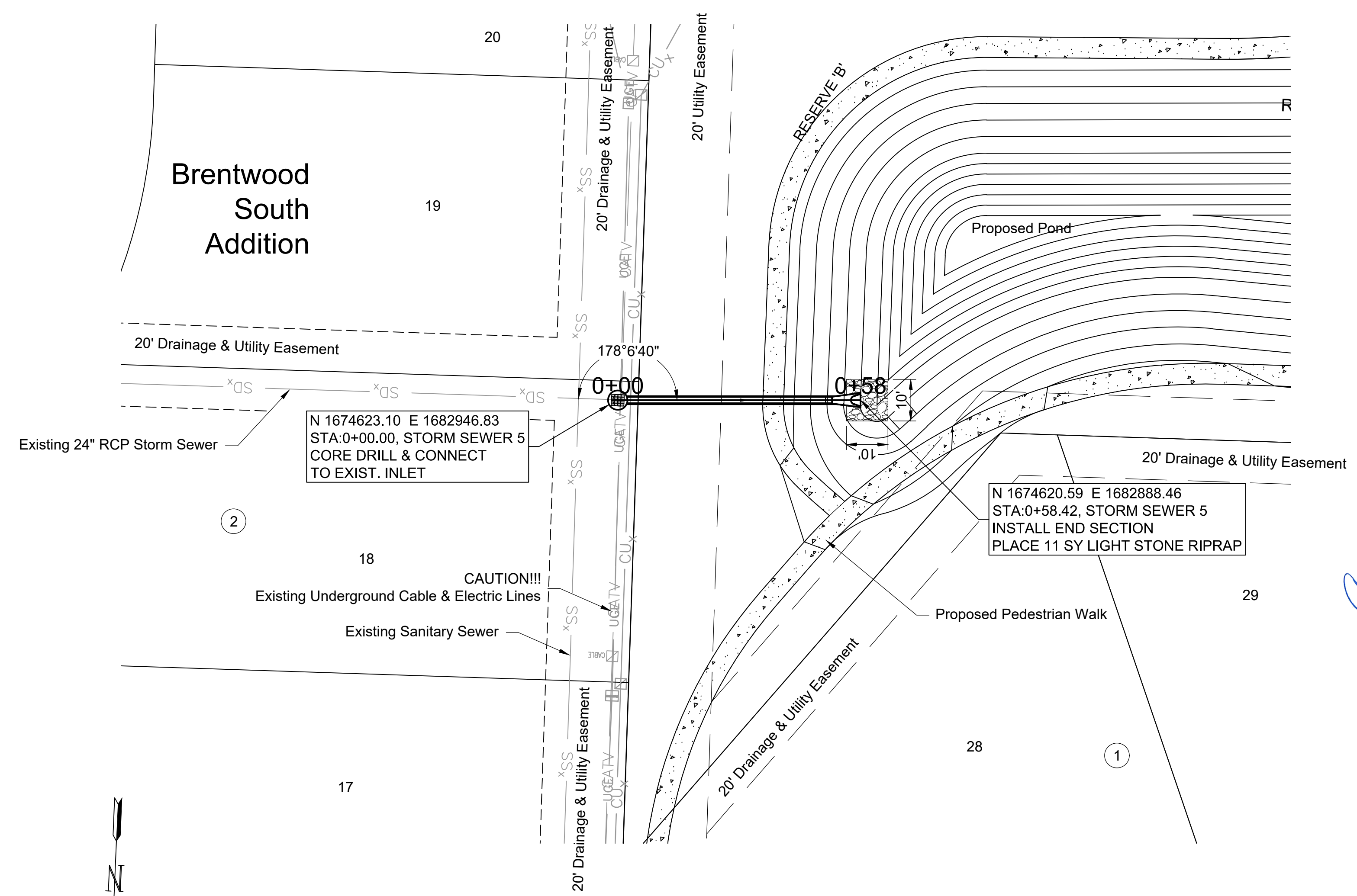




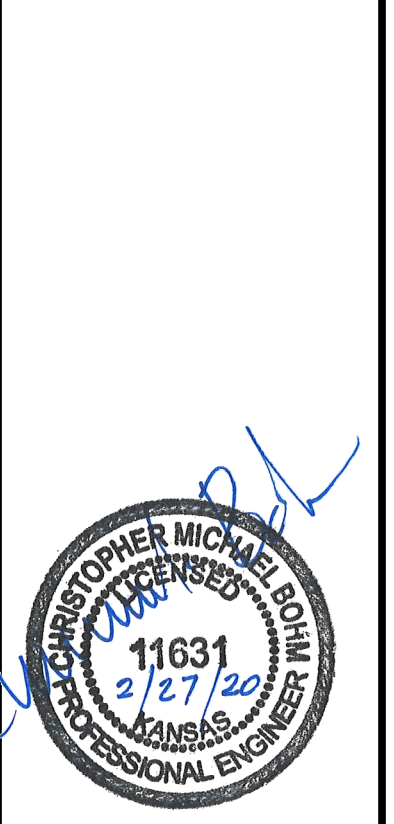
Exposed electric and communications lines near connection point.



File: L:\2019\19141021 - VCRC Improvements\Drawings\C3DPAVING_DRAINAGE\STORM SEWER 5.dwg Last Save: 2/27/2020 10:55 AM Last saved by: CDJurey
Last plotted by: Jurey, Caleb D. Plot Date: 2/27/2020 11:35 AM Plotter used: None

GARVER

© 2020 GARVER, LLC
THIS DOCUMENT, ALONG WITH THE IDEAS AND DESIGNS CONVEYED HEREIN, SHALL BE CONSIDERED INSTRUMENTS OF PROFESSIONAL SERVICE AND ARE PROPERTY OF GARVER, LLC. ANY USE, REPRODUCTION, OR DISTRIBUTION OF THIS DOCUMENT, ALONG WITH THE IDEAS AND DESIGN CONTAINED HEREIN, IS PROHIBITED UNLESS AUTHORIZED IN WRITING BY GARVER, LLC OR EXPLICITLY ALLOWED IN THE GOVERNING PROFESSIONAL SERVICES AGREEMENT FOR THIS WORK.



REV.	DATE	DESCRIPTION	BY

CITY OF WICHITA
WICHITA, KANSAS

CHALET RIDGE ADDITION
DRAINAGE

STORM SEWER 5

JOB NO.: 19T41021
DATE: FEB 2020
DESIGNED BY: CMB
DRAWN BY: CDJ

BAR IS ONE INCH ON ORIGINAL DRAWING
IF NOT ONE INCH ON THIS SHEET, ADJUST SCALES ACCORDINGLY.

DRAWING NUMBER

SHEET NUMBER **30** OF **47**