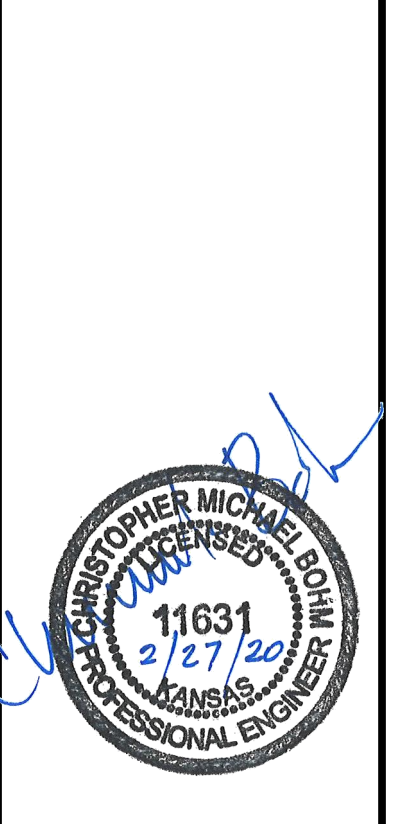




© 2020 GARVER, LLC
 THIS DOCUMENT, ALONG WITH THE IDEAS AND DESIGNS CONVEYED HEREIN, SHALL BE CONSIDERED INSTRUMENTS OF PROFESSIONAL SERVICE AND ARE PROPERTY OF GARVER, LLC. ANY USE, REPRODUCTION, OR DISTRIBUTION OF THIS DOCUMENT, ALONG WITH THE IDEAS AND DESIGN CONTAINED HEREIN, IS PROHIBITED UNLESS AUTHORIZED IN WRITING BY GARVER, LLC OR EXPLICITLY ALLOWED IN THE GOVERNING PROFESSIONAL SERVICES AGREEMENT FOR THIS WORK.

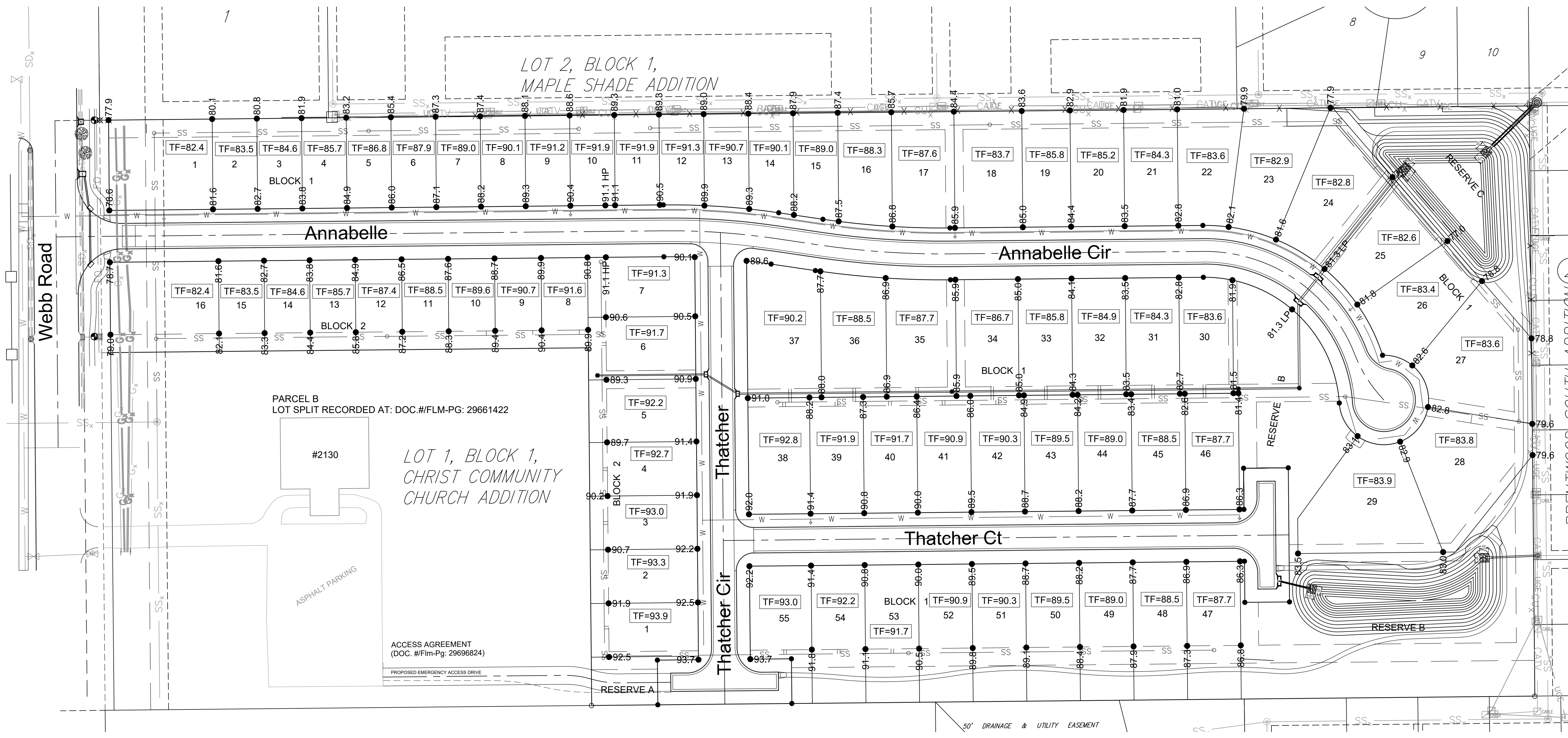


REV.	DATE	DESCRIPTION	BY
1	04/02/20	Altered grading near entry	CDJ

CITY OF WICHITA
 WICHITA, KANSAS
 CHALET RIDGE ADDITION
 DRAINAGE

FOUR-CORNER GRADING PLAN

JOB NO.: 19T41021
 DATE: FEB 2020
 DESIGNED BY: CMB
 DRAWN BY: CDJ
 BAR IS ONE INCH ON ORIGINAL DRAWING
 IF NOT ONE INCH ON THIS SHEET, ADJUST SCALES ACCORDINGLY.
 DRAWING NUMBER
 SHEET NUMBER **31** OF **47**



Benchmarks

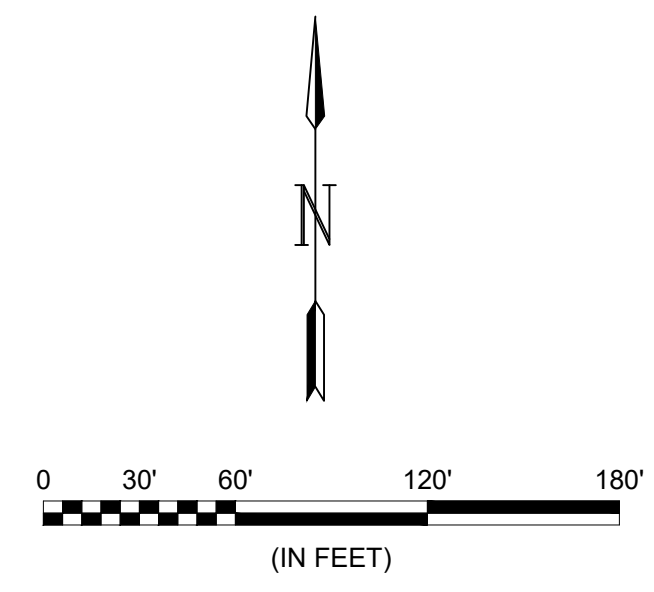
BENCHMARK #1:
 CHISELED SQUARE ON THE TOP OF SIDEWALK, 44 FEET EAST OF THE CENTERLINE OF WEBB RD AND 1,986 FEET NORTH OF THE CENTERLINE OF PAWNEE. ELEVATION = 1377.19 (NAVD88, G12B)

BENCHMARK #2:
 CHISELED SQUARE ON THE TOP OF SIDEWALK, 42 FEET EAST OF THE CENTERLINE OF WEBB RD AND 1,744 FEET NORTH OF THE CENTERLINE OF PAWNEE. ELEVATION = 1377.96 (NAVD88, G12B)

MINIMUM BUILDING PAD ELEVATION FOR LOWEST OPENING INTO STRUCTURES

BLOCK	LOT NO.	ELEVATION (NAVD88)
1	24, 25, 26, 27	1380.0
1	28, 29, 47	1383.8

Note:
 For detailed site grading, see sheet 33.



File: L:\2019\19T41021 - VCRC Improvements\Drawings\C3D\PAVING_DRAINAGE\FOUR-CORNER GRADING PLAN.dwg Last Save: 4/2/2020 10:22 AM Last saved by: Cdjurey
 Last plotted by: Jurey, Caleb D. Plot Style: --- Plot Scale: 1:2,584.9 Plot Date: 4/2/2020 12:09 PM Plotter Used: None