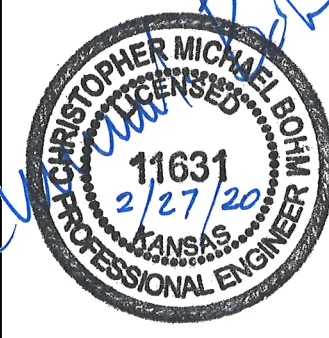
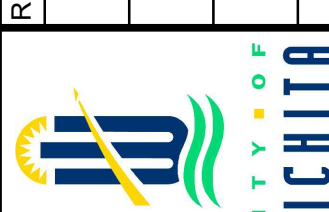




© 2020 GARVER, LLC
 THIS DOCUMENT, ALONG WITH THE IDEAS AND DESIGNS CONVEYED HEREIN, SHALL BE CONSIDERED INSTRUMENTS OF PROFESSIONAL SERVICE AND ARE PROPERTY OF GARVER, LLC. ANY USE, REPRODUCTION, OR DISTRIBUTION OF THIS DOCUMENT, ALONG WITH THE IDEAS AND DESIGN CONTAINED HEREIN, IS PROHIBITED UNLESS AUTHORIZED IN WRITING BY GARVER, LLC OR EXPLICITLY ALLOWED IN THE GOVERNING PROFESSIONAL SERVICES AGREEMENT FOR THIS WORK.



REV.	DATE	DESCRIPTION	BY



CITY OF WICHITA
 WICHITA, KANSAS
 CHALET RIDGE ADDITION
 DRAINAGE

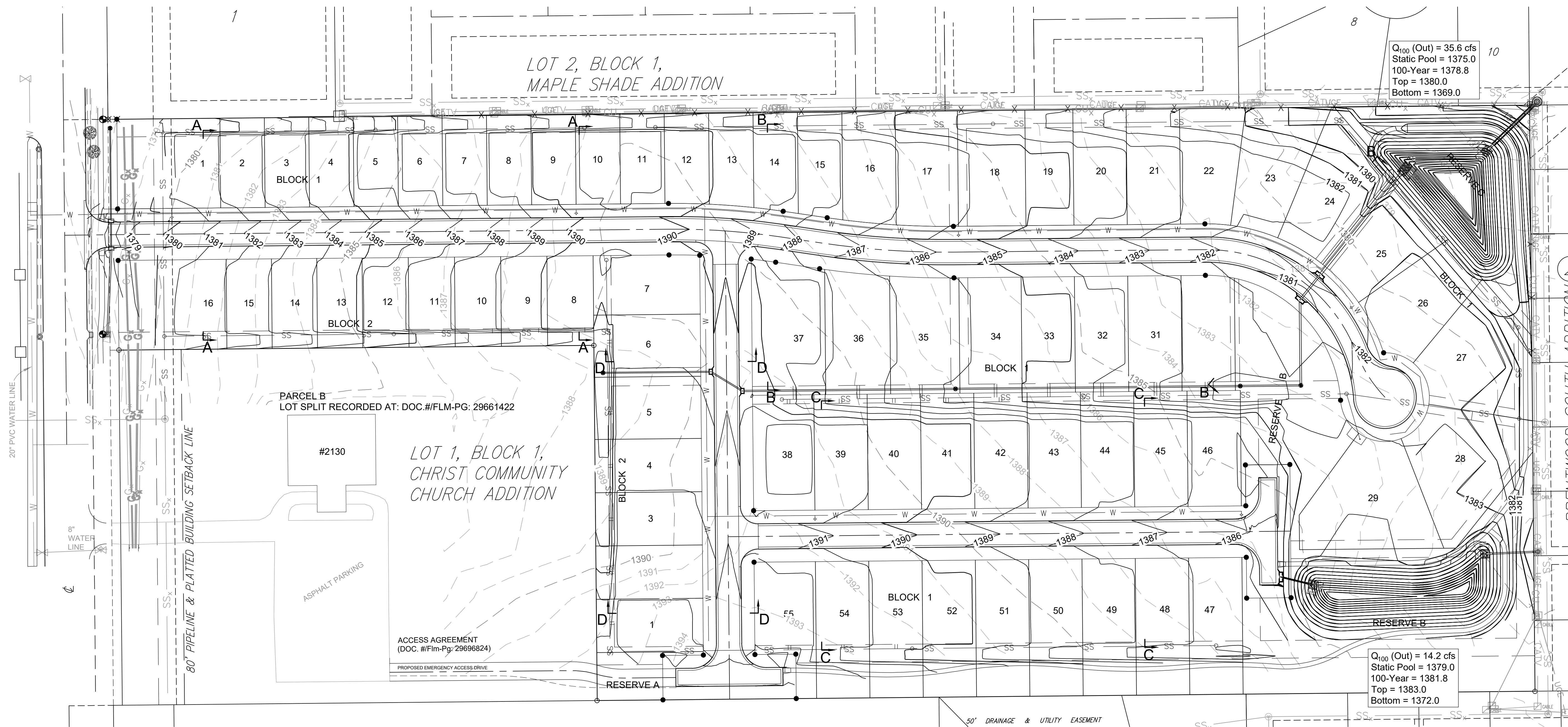
GRADING PLAN

JOB NO.: 19T41021
 DATE: FEB 2020
 DESIGNED BY: CMB
 DRAWN BY: CDJ

BAR IS ONE INCH ON ORIGINAL DRAWING
 IF NOT ONE INCH ON THIS SHEET, ADJUST SCALES ACCORDINGLY.

DRAWING NUMBER

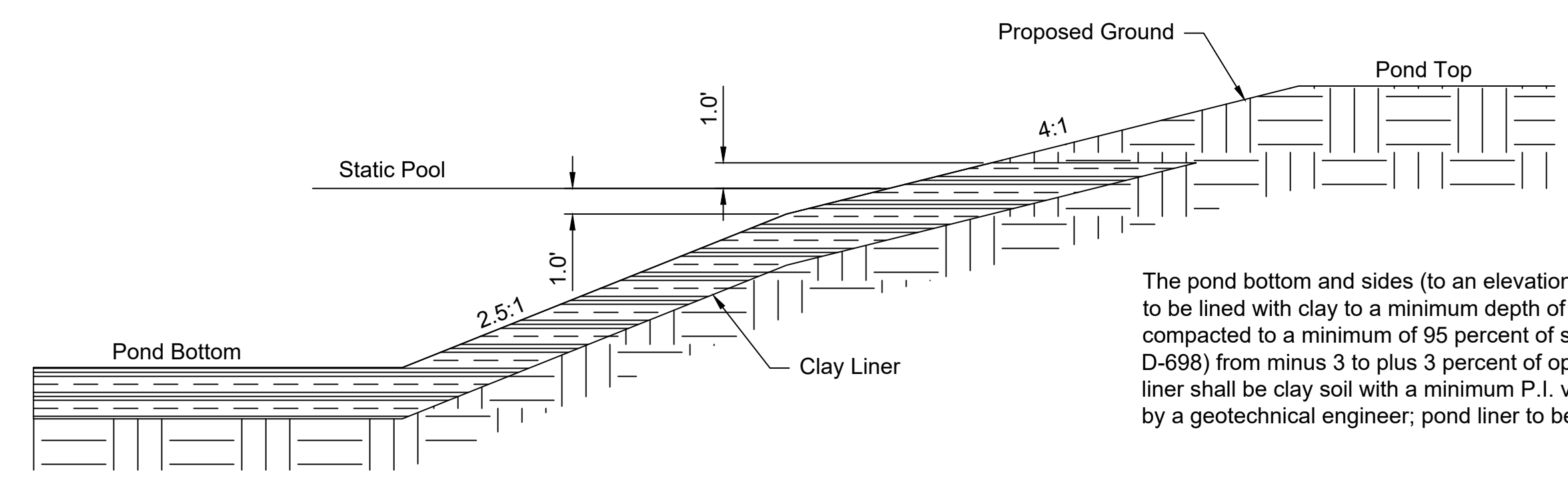
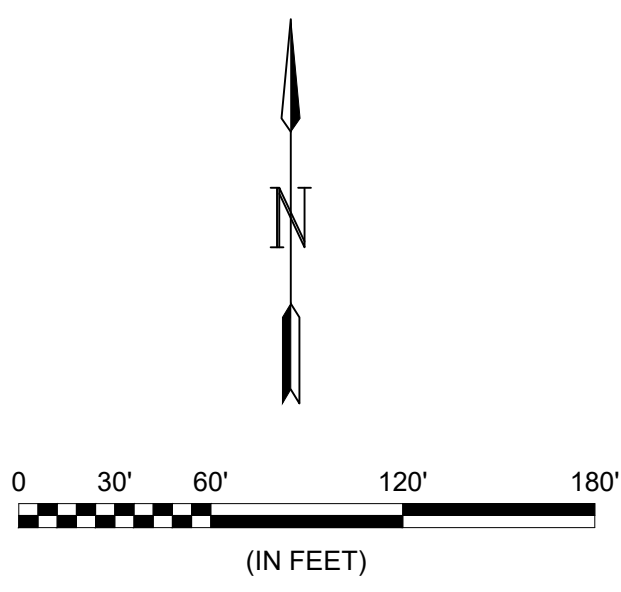
SHEET NUMBER **33** OF **47**



Q₁₀₀ (Out) = 35.6 cfs
 Static Pool = 1375.0
 100-Year = 1378.8
 Top = 1380.0
 Bottom = 1369.0

Q₁₀₀ (Out) = 14.2 cfs
 Static Pool = 1379.0
 100-Year = 1381.8
 Top = 1383.0
 Bottom = 1372.0

Note:
 Garver will provide digital terrain models of existing ground and finished grade for the contractor's use. The digital model is a design aid and shall not be used as a construction mandate. Lot pad dimensions are 50'x90'. The contractor shall grade each lot to be level and at the elevations indicated on the following sheet.



The pond bottom and sides (to an elevation of 1.0' above the static pool) are to be lined with clay to a minimum depth of 1 foot, moisture conditioned and compacted to a minimum of 95 percent of standard proctor density (ASTM D-698) from minus 3 to plus 3 percent of optimum moisture content. Pond liner shall be clay soil with a minimum P.I. value of 30 or must be approved by a geotechnical engineer; pond liner to be incidental to Excavation.

Typical Pond Section

File: L:\2019\19T41021 - VCRC Improvements\Drawings\C3DPAVING_DRAINAGE\GRADING PLAN.dwg Last Save: 2/25/2020 5:25 PM Last saved by: CDJurey
 Last plotted by: Jurey, Caleb D. Plot Date: 2/27/2020 11:37 AM Plotter used: None