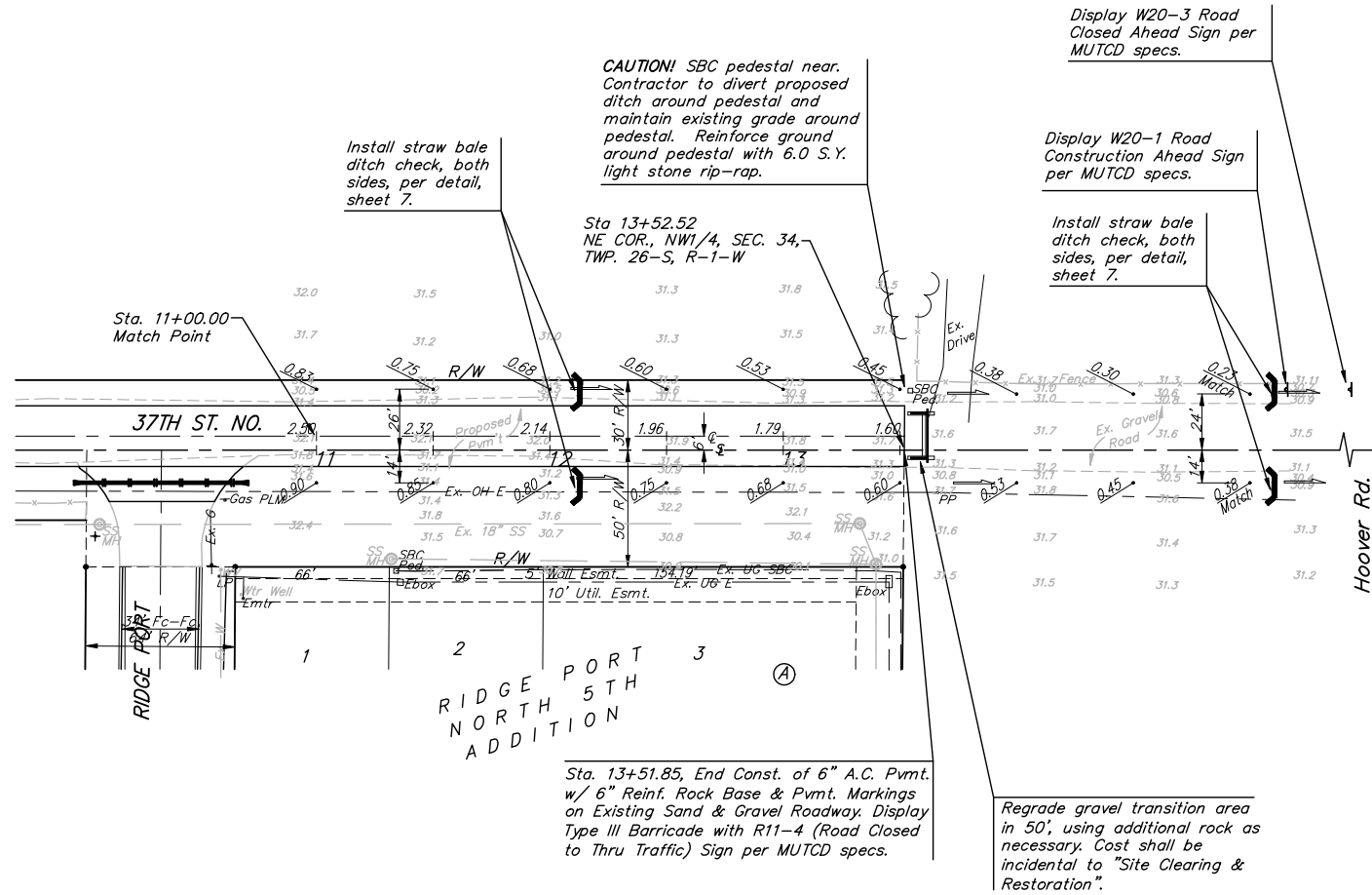
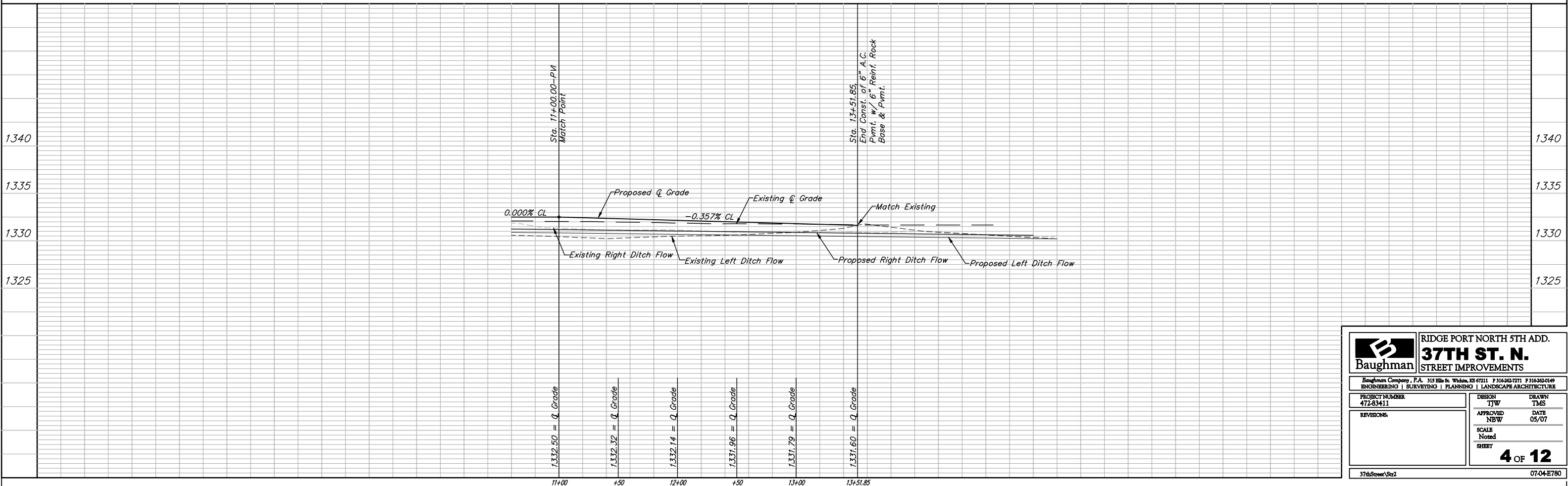


BENCHMARKS:
 BM #1: "□" ON HUBGUARD OF R.C.B.C.,
 73' W. OF SE COR., SE1/4, SEC. 28,
 TWP. 26-S, R-1-W
 ELEV. = 144.22 CITY DATUM (1331.62 M.S.L.)
 BM #2: 60d STEP BENCH IN HLP, 15' N. &
 40' E. OF THE INTERSECTION OF 34TH ST. N.
 AND EISENHOWER
 ELEV. = 144.00 CITY DATUM (1331.40 M.S.L.)



Scale: 1" = 40' Horizontal
 1" = 5' Vertical
 • = Iron



		RIDGE PORT NORTH 5TH ADD. 37TH ST. N. STREET IMPROVEMENTS	
		<small>Baughman Company, P.A. 315 Ellis St. Wichita, KS 67211 P 316-262-7771 F 316-262-0149 ENGINEERING SURVEYING PLANNING LANDSCAPE ARCHITECTURE</small>	
PROJECT NUMBER 472-83411	DESIGN TJW	DRAWN TMS	DATE 05/07
REVISIONS	APPROVED NBW	SCALE Noted	SHEET 4 OF 12
<small>37thStreet/Str2</small>		<small>07-04-E780</small>	