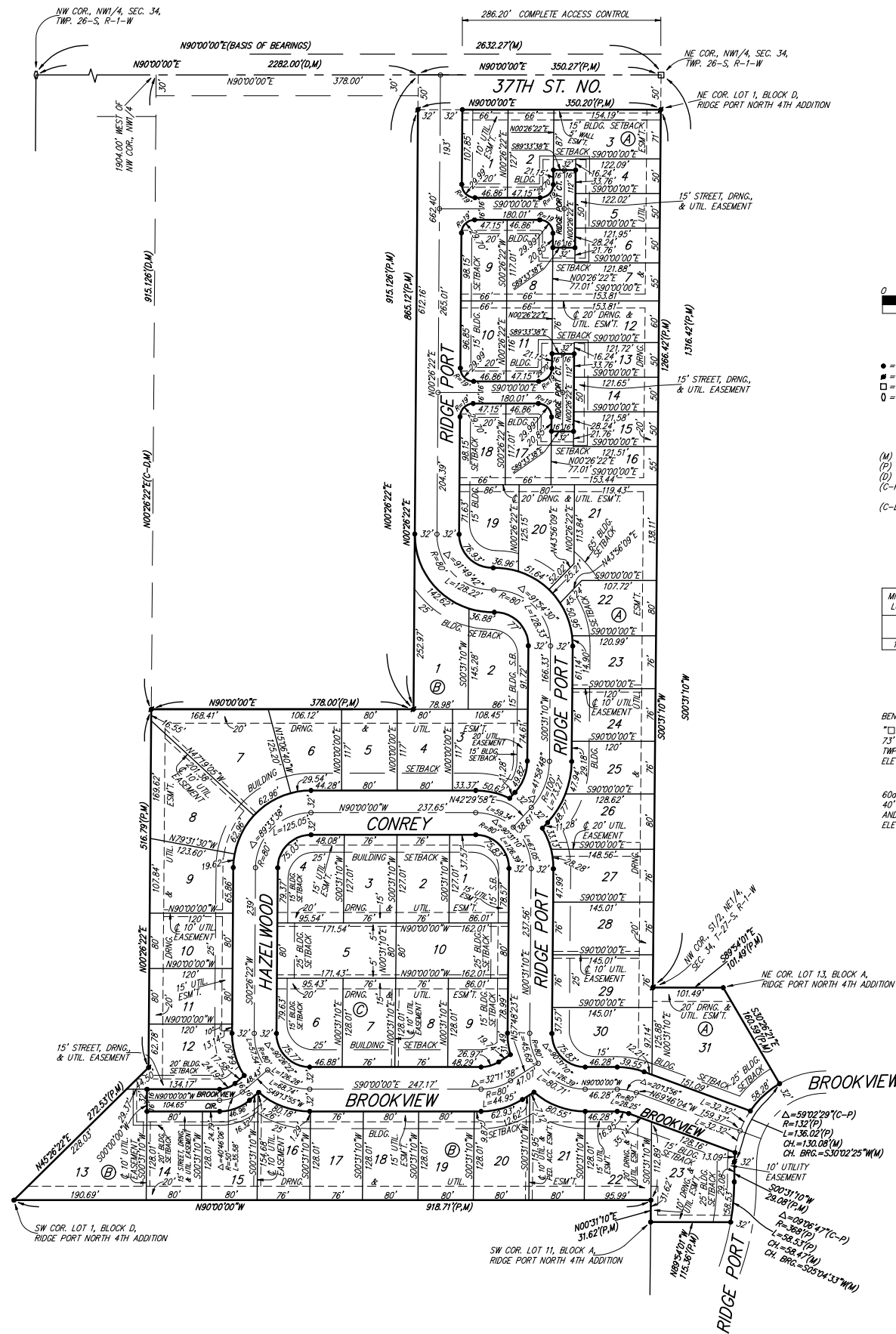


RIDGE PORT NORTH 5TH ADDITION

WICHITA, SEDGWICK COUNTY, KANSAS



- = #4 REBAR W/ "BAUGHMAN" CAP (SET)
- = #4 REBAR W/ "BAUGHMAN" CAP (FOUND)
- = NAIL IN 1/2" IRON (FOUND)
- = RAILROAD SPIKE (FOUND)

- (M) = MEASURED
- (P) = PLATTED
- (D) = DESCRIBED
- (C-P) = CALCULATED PER PLATTED INFO.
- (C-D) = CALCULATED PER DESCRIBED INFO.

LOT	BLOCK	ELEVATION
13-23	B	141.0 1328.4

BENCHMARK:
 "C" ON HUBBARD OF R.C.B.C.,
 73' W. OF SE COR., SET 1/4, SEC. 28,
 TWP. 26-S, R-1-W
 ELEV. = 144.22 CITY DATUM (1331.62 M.S.L.)

604 STEP BENCH IN H.P. 15' N. &
 40' E. OF THE INTERSECTION OF 34TH ST. N.
 AND EISENHOWER
 ELEV. = 144.00 CITY DATUM (1331.40 M.S.L.)

NOTE:
 A master grading plan for drainage has been developed for this subdivision and is on file with the City of Wichita, Kansas. All drainage easements, rights-of-way, or reserves shall remain at established grades or as modified with the approval of the City Engineer of the City of Wichita, Kansas. No obstructions which impede the flow of this drainage system shall be allowed.

State of Kansas) SS
 Sedgwick County) We, Baughman Company, P.A., Surveyors in aforesaid county and state do hereby certify that we have surveyed and platted "RIDGE PORT NORTH 5TH ADDITION", Wichita, Sedgwick County, Kansas and that the accompanying plat is a true and correct exhibit of the property surveyed, described as and being a replat of all of Lot 1, Block D, and all of Lots 11, 12, and 13, Block A, all as platted in Ridge Port North 4th Addition, Wichita, Sedgwick County, Kansas.

All being situated in the NW1/4 and NE1/4 of Sec. 34, Twp. 26-S, R-1-W of the 6th P.M., Sedgwick County, Kansas.
 Existing public easements and dedications being vacated by virtue of K.S.A. 12-512(b).
 Baughman Company, P.A.

Michael G. Conrey, Surveyor

Know all men by these presents that we, the undersigned, have caused the land in the surveyors certificate to be platted into Lots, Blocks, and Streets, to be known as "RIDGE PORT NORTH 5TH ADDITION", Wichita, Sedgwick County, Kansas. The utility easements are hereby granted as indicated for the construction and maintenance of all public utilities. The drainage and utility easements are hereby granted as indicated for drainage purposes and for the construction and maintenance of all public utilities. The street, drainage, and utility easements are hereby granted as indicated for street related purposes, for drainage purposes, and for the construction and maintenance of all public utilities. The utility and pedestrian access easement is hereby granted as indicated for the construction and maintenance of all public utilities and for pedestrian access to or from Reserve "A", Ridge Port North 4th Addition. The streets are hereby dedicated to and for the use of the public. Access controls shall be as depicted on the face of the plat and are hereby granted to the City of Wichita, Kansas. The Minimum Building Pad Elevations for the lowest opening to the structures shall be as indicated on the face of the plat.

Ridge Port Group, LLC,
 a Kansas limited liability company

Jay W. Russell, Manager

Kevin M. Mullen, President of
 Ritchie Associates, Inc.

State of Kansas) SS
 Sedgwick County) The foregoing instrument acknowledged before me, this _____ day of _____, 2002, by Jay W. Russell, Manager of Ridge Port Group, LLC, a Kansas limited liability company, on behalf of the limited liability company.

_____, Notary Public

My App't. Exp. _____

State of Kansas) SS
 Sedgwick County) The foregoing instrument acknowledged before me, this _____ day of _____, 2002, by Kevin M. Mullen, President of Ritchie Associates, Inc., as Manager of Ridge Port Group, LLC, a Kansas limited liability company, on behalf of the limited liability company.

_____, Notary Public

My App't. Exp. _____

This plat of "RIDGE PORT NORTH 5TH ADDITION", Wichita, Sedgwick County, Kansas has been submitted to and approved by the Wichita-Sedgwick County Metropolitan Area Planning Commission, Wichita, Kansas.

Dated this _____ day of _____, 2002.
 Wichita-Sedgwick County Metropolitan Area Planning Commission

_____, Chair
 J. D. Michaelis

_____, Acting Secretary
 Michael E. Lindebak

This plat approved and all dedications shown hereon accepted by the City Council of the City of Wichita, Kansas, this _____ day of _____, 2002.
 At the direction of the City Council

_____, City Manager
 Chris Cherches

_____, City Clerk
 Pat Burnett

Reviewed in accordance with K.S.A. 58-2005 on this _____ day of _____, 2002.

Tricia L. Robella, L.S. #1246
 Deputy County Surveyor
 Sedgwick County, Kansas

Entered on transfer record this _____ day of _____, 2002.

Don Brace, County Clerk

State of Kansas) SS
 Sedgwick County) This is to certify that this plat has been filed for record in the office of the Register of Deeds, this _____ day of _____, 2002 at _____ o'clock _____ M.; and is duly recorded.

_____, Register of Deeds
 Bill Meek

_____, Deputy
 Linda Kizzire

We the undersigned holders of a mortgage on the above described property, do hereby consent to this plat of "RIDGE PORT NORTH 5TH ADDITION", Wichita, Sedgwick County, Kansas.
 INTRUST Bank, N.A.

State of Kansas) SS
 Sedgwick County) The foregoing instrument acknowledged before me, this _____ day of _____, 2002, by _____ of INTRUST Bank, N.A., on behalf of the bank.

_____, Notary Public

My App't. Exp. _____