

# STREET PAVING IMPROVEMENTS

to serve

## RIVENDALE ADDITION - PHASE 3

**Victoria, from 55th St. S north to Lot 26, Block C**  
**Victoria Ct., from Victoria east and then south to and including the cul-de-sac**  
**Maywood, from the west line of Lot 14, Block D east to Victoria**  
**Pattie, from Maywood north to the north line of Lot 25, Block B**

### CITY OF WICHITA, KANSAS

James L. Armour, P.E. City Engineer

Project Number

472-83868

O.C.A. Number

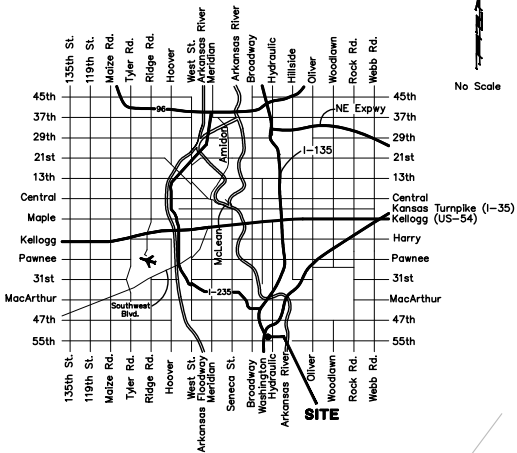
766126

**Benchmark**

City of Wichita Benchmark Disc,  
 Hydraulic and 55th Street South,  
 42.00' North of Centerline, 40.70'  
 West of Centerline, 3.70' North of  
 centerline of Power Pole, 58.20'  
 Northwest of Southeast Corner, Sec.  
 21, Twp. 28-S, R-1-E.  
 Elev. = 76.19 City Datum  
 Elev. = 1263.59 (NGVD29)

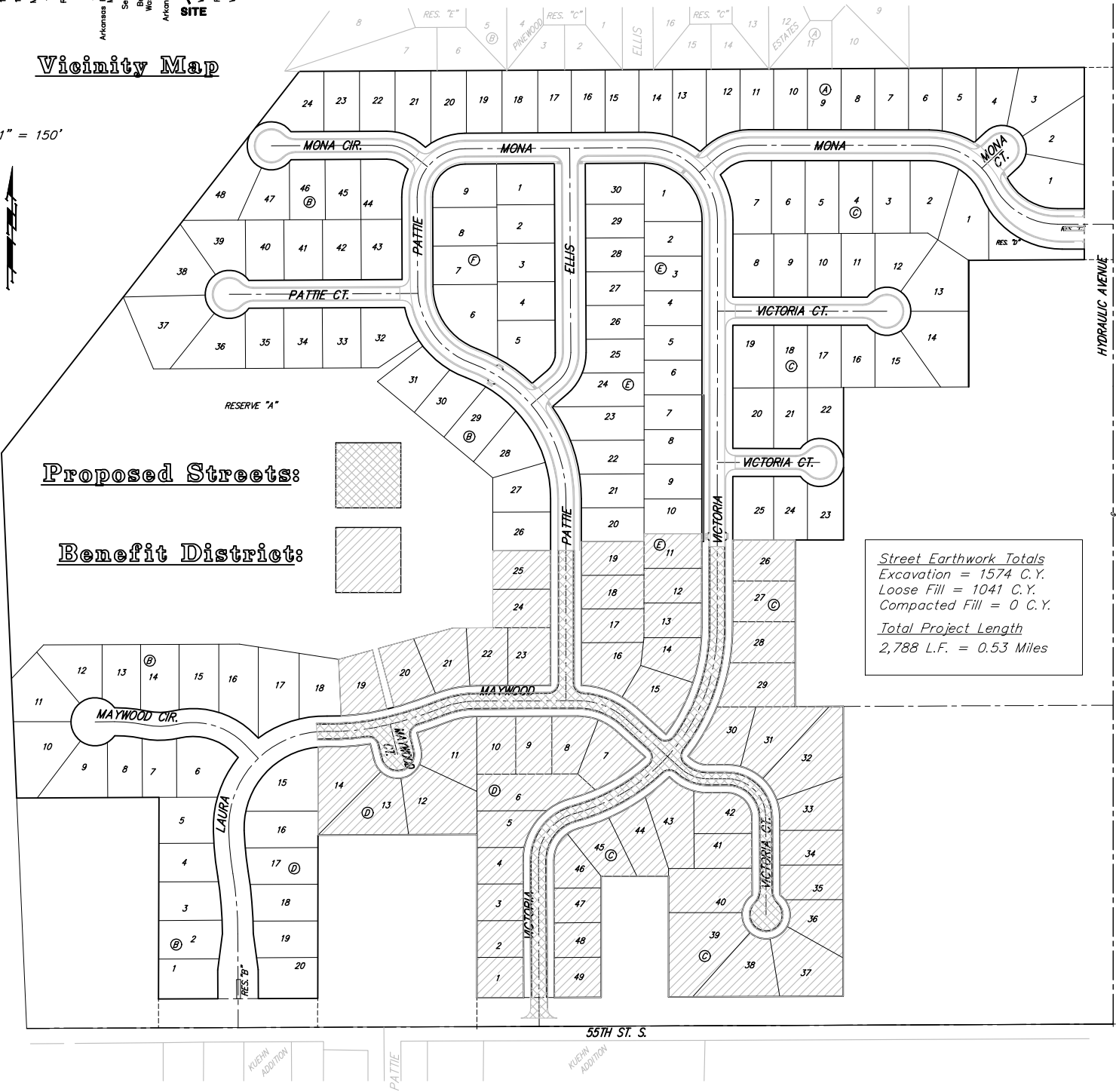
### Sheet Index

Title Sheet	1	SWS Line 4	21
35' Pavement Detail	2	Std. Manhole Dtl.	22
29' Pavement Detail	3	Std. Shallow Manhole Dtl.	23
Sign Detail	4	Frame & Cover Dtl.	24
Miscellaneous Detail	5	Single Curb Inlet Dtl.	25
Victoria	6-8	Double Curb Inlet Dtl.	26
Victoria Ct.	9	Drop Inlet Dtl.	27
Maywood & Maywood Ct.	10-11	Special Yard Inlet	28
Pattie	12	Mass Grading Plan	29
SWS Line 1	13-15	Erosion Control Plan	30
SWS Line 1A	13	Erosion Control BMP's	31-34
SWS Line 1B	15	Earthwork Cross Sections	35-37
SWS Line 2	16	Coordinate Sheet	38
SWS Line 3	17-19	Copy of Plat	39
SWS Line 3A	20		



Vicinity Map

Scale: 1" = 150'



### GENERAL NOTES:

- Contractor will be required to provide notice to utility companies a minimum of twenty-four (24) hours prior to any excavation, as follows:  

Kansas One-Call	687-2470
Cox Communications	262-4270
Kansas Gas Service	1-888-482-4950
Westar Energy	383-8650
Aquila Energy	1-800-303-0357
AT&T	268-2245
City of Wichita Water Dept.	268-4563
City of Wichita Sewer Maint.	268-4024
City of Wichita Storm Sewer Maint.	268-4090
City of Wichita Traffic Maint.	268-4034
Conoco Pipeline Co.	1-800-231-2551
Southern Star Pipeline Co.	529-6600
Phillips Pipeline Co.	1-800-766-8230
Jayhawk Pipeline Co.	1-888-542-9575

The Contractor must notify the following in case of an emergency:
- Rubble from the removal of miscellaneous structures and excess excavation which is to be wasted shall be disposed of on sites to be provided by the Contractor. These sites shall be approved by the Engineer as to suitability, appearance and site location. Locations that, in the opinion of the Engineer, will leave an unsightly appearance will not be approved. All disposal sites must be approved by the Kansas Department of Health and Environment. Material either stockpiled or disposed of in a flood plain would require a Kansas State Board of Agriculture permit. Any material dumped in waters of the United States or wetlands is subject to U.S. Corps. of Engineers permitting regulations. Any material buried or stockpiled beyond approved construction limits would require additional archaeological investigations unless buried in a previously approved borrow location.
- The Contractor shall be responsible for preserving property irons. The Contractor will be required to re-establish any property irons which are damaged or destroyed by his construction operations. Such irons shall be re-established by a licensed land surveyor in accordance with state law.
- A saw cut of at least one-half the depth of existing surface courses or one-fourth the depth of the existing total pavement thickness shall be provided at locations where proposed construction abuts an existing surface course or pavement for which partial removal of that surface or pavement is required. Sawed joint to facilitate removal within three (3) feet of existing joints will not be permitted and for such instances the limits of removal shall extend to the existing joint. Such saw cuts will not be paid for directly and this cost shall be considered as subsidiary to the removal of the surface or pavement.
- All existing and proposed erosion control measures including silt fencing, erosion control mat, straw bales, inlet barriers, and const. entrance shall be maintained throughout construction by the contractor and until project is accepted by the City of Wichita. The on-site engineer shall complete weekly reports on the status of erosion control measures. The contractor shall be required to comply with maintenance and/or replacement of erosion control measures as determined by the on-site engineer until project is accepted by City of Wichita. Maintenance and/or replacement of erosion control measures to be paid by Individual Bid Items.
- The developer for this project is Tim J. Malone, and may be reached at (316) 263-4623.
- Earthwork Cross Sections and Mass Grading reflect the best topographic information available at the time of plan preparation. The Contractor shall satisfy himself with the Earthwork Quantities as bid for Excavation and Compacted Fill prior to bidding. No additional payments or change orders for earthwork or earthwork related items will be accepted.
- All excavation & trenching material shall be stockpiled or spread out on site as determined by the Engineer.
- All areas disturbed during construction shall be seeded at 300 lbs./acre with Rye Grass immediately following construction in that area. Contractor shall prepare ground per City Specifications.