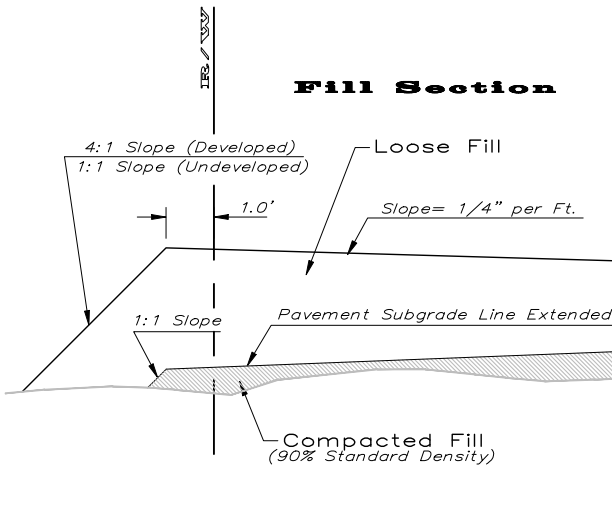
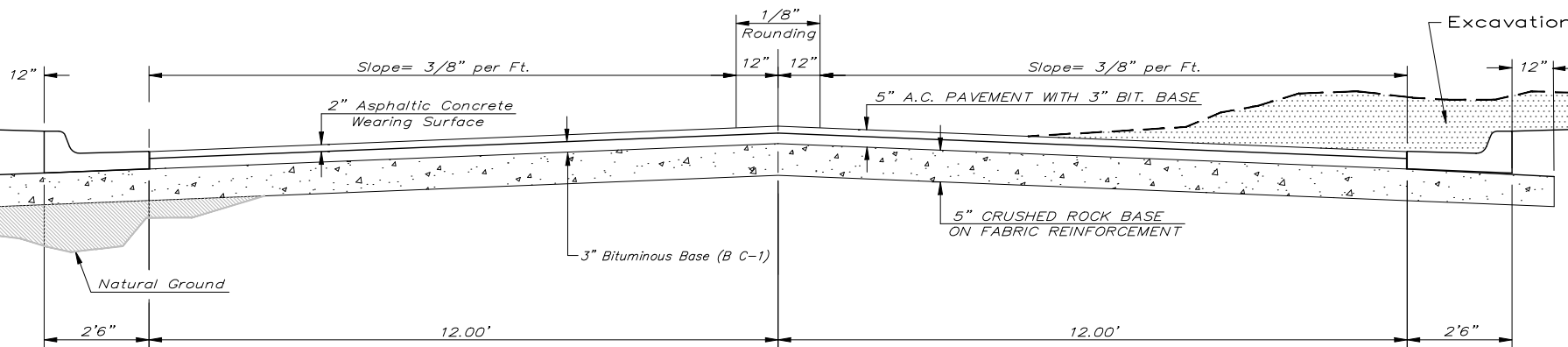


# TYPICAL 29' B-B PAVEMENT DETAILS

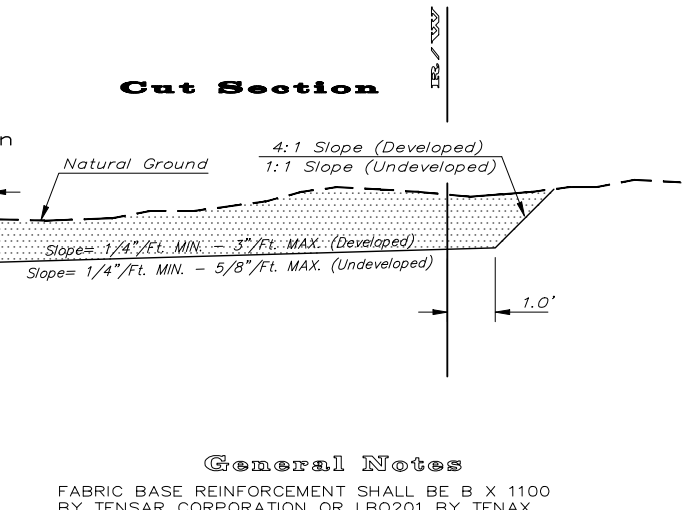
**Fill Section**



**TRANSVERSE SECTION**



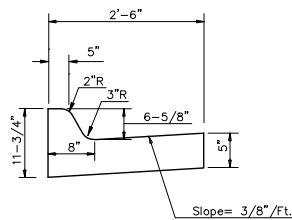
**Cut Section**



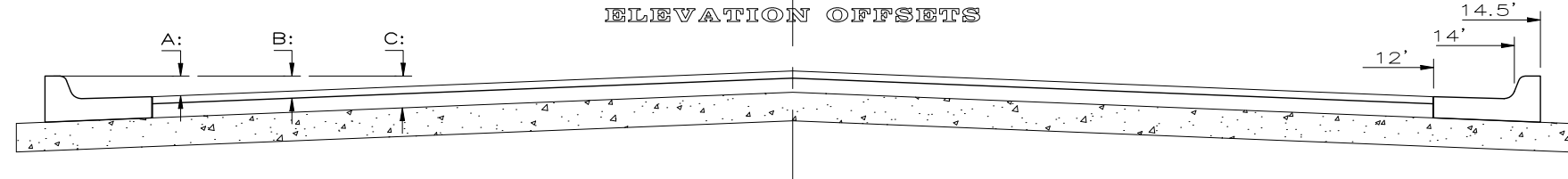
**CRUSHED ROCK GRADATION REQUIREMENTS**  
PERCENT OF AGGREGATE RETAINED

|        |         |
|--------|---------|
| 2-1/2" | 0       |
| 3/4"   | 20 - 60 |
| #4     | 50 - 80 |
| #40    | 80 - 94 |
| #200   | 90 - 98 |

ROCK QUALITY SHALL CONFORM TO THE REQUIREMENTS SPECIFIED BY THE KDOT 1990 EDITION STANDARD SPECIFICATION SUBSECTION 1102 FOR DURABILITY CLASS I.

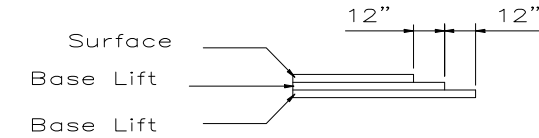


**COMBINED CURB & GUTTER**



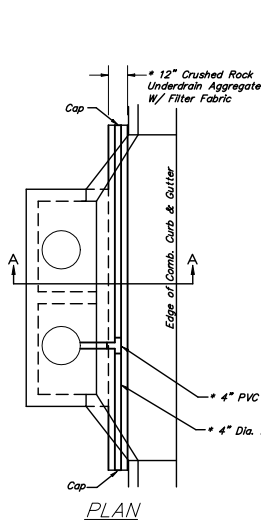
**ELEVATION OFFSETS**

|   | DISTANCE FROM CENTERLINE (LT. & RT.) |      |      |      |      |      |      |      |      |       |       |
|---|--------------------------------------|------|------|------|------|------|------|------|------|-------|-------|
|   | 0'                                   | 2'   | 4'   | 6'   | 7'   | 8'   | 10'  | 12'  | 14'  | 14.5' | 15.5' |
| A: Top of Curbs to Top of Surface Lift    | 0.13                                 | 0.18 | 0.24 | 0.30 | 0.33 | 0.36 | 0.43 | 0.49 | —    | —     | —     |
| B: Top of Curbs to Top of Upper Base Lift | 0.30                                 | 0.35 | 0.41 | 0.47 | 0.50 | 0.53 | 0.60 | 0.66 | —    | —     | —     |
| C: Top of Curbs to Top of C.R. Subgrade   | 0.55                                 | 0.60 | 0.66 | 0.72 | 0.75 | 0.78 | 0.85 | 0.91 | 0.97 | 0.98  | 1.01  |



**TRANSVERSE CONSTRUCTION JOINTS**

Transverse construction joints shall be constructed in flexible base pavements at locations where pavement joints existing flexible base pavement as shown by the detail. All costs associated with the construction of the transverse joint shall be included in the bid price for Square Yards 5" ASPHALTIC CONCRETE (3" BITUMINOUS BASE).



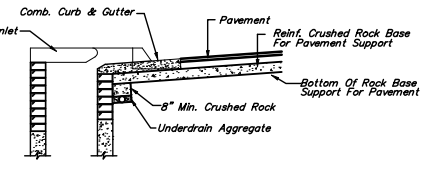
**PAVEMENT UNDERDRAIN DETAIL**  
NOT TO SCALE

\* UNDERDRAIN AGGREGATE  
Percent of Aggregate Retained

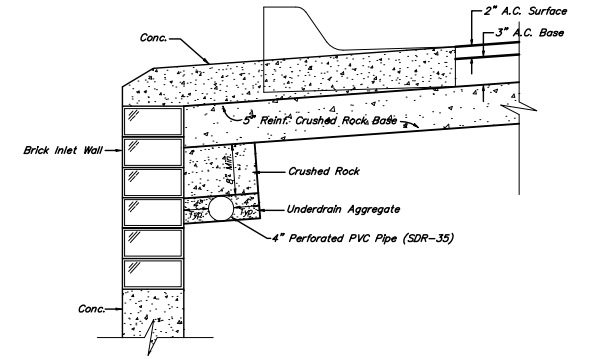
|      |           |
|------|-----------|
| 1"   | 0         |
| 3/4" | 0 to 10   |
| 3/8" | 45 to 80  |
| #4   | 90 to 100 |
| #8   | 95 to 100 |

Rock Quality Shall Conform To The Requirements Specified By K.D.O.T. 1990 Edition Standard Specification Subsection 1102 For Durability Class I.

NOTE: Place 4" PVC Perforated Pipe at all drainage sump locations.  
Cost of Underdrain System to be incidental to the Reinforced Crushed Rock Subgrade.  
Inlet Type May Vary From That Shown.

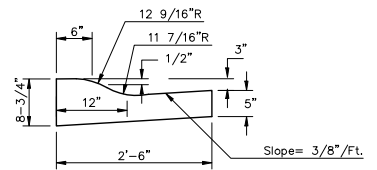


**SECTION A-A**



**TRENCH DRAIN DETAIL FOR RES. STREETS**  
NOT TO SCALE

**COMBINED ROLL TYPE CURB & GUTTER**



**Baughman** 5 Inch Residential Asphaltic Concrete Pavement w/Crushed Rock Base on Fabric Reinf. City of Wichita, Kansas

Baughman Company, P.A. 315 8th St. Wichita, KS 67211 P 316-262-7271 F 316-262-0149  
ENGINEERING | SURVEYING | PLANNING | LANDSCAPE ARCHITECTURE

|                             |                  |                  |
|-----------------------------|------------------|------------------|
| PROJECT NUMBER<br>472-63868 | DESIGN<br>C.O.W. | DRAWN<br>Staff   |
| REVISIONS:                  | APPROVED         | DATE<br>5-4-07   |
|                             | SCALE<br>None    | SHEET<br>3 OF 39 |

Rivendale\Phase\39Rock