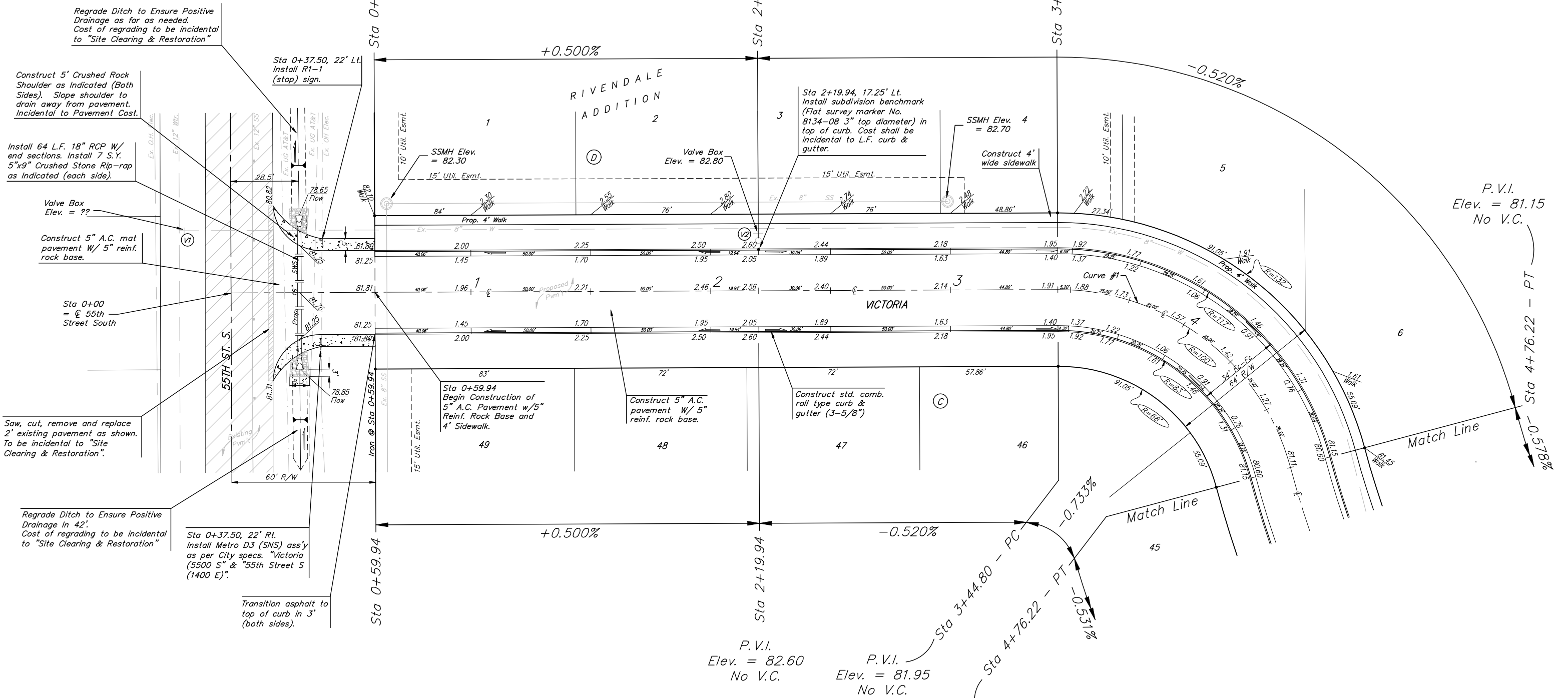


Benchmark:
 City of Wichita Benchmark Disc,
 Hydraulic and 55th Street South,
 42.00' North of Centerline, 40.70'
 West of Centerline, 3.70' North of
 centerline of Power Pole, 58.20'
 Northwest of Southeast Corner, Sec.
 21, Twp. 28-S, R-1-E.
 Elev. = 76.19 City Datum
 Elev. = 1263.59 (NGVD29)

P.V.I.
 Elev. = 82.60
 No V.C.

Scale: 1" = 20'
 • = Iron



Regrade Ditch to Ensure Positive Drainage as far as needed. Cost of regrading to be incidental to "Site Clearing & Restoration"

Construct 5' Crushed Rock Shoulder as Indicated (Both Sides). Slope shoulder to drain away from pavement. Incidental to Pavement Cost.

Install 64 L.F. 18" RCP W/ end sections. Install 7 S.Y. 5"x9" Crushed Stone Rip-roap as Indicated (each side).

Valve Box Elev. = ??

Construct 5" A.C. mat pavement W/ 5" reinf. rock base.

Sta 0+00 = C 55th Street South

Saw, cut, remove and replace 2' existing pavement as shown. To be incidental to "Site Clearing & Restoration".

Regrade Ditch to Ensure Positive Drainage in 42'. Cost of regrading to be incidental to "Site Clearing & Restoration"

Sta 0+37.50, 22' Rt. Install Metro D3 (SNS) ass'y as per City specs. "Victoria (5500 S" & "55th Street S (1400 E)".

Transition asphalt to top of curb in 3' (both sides).

Sta 0+59.94 Begin Construction of 5" A.C. Pavement w/ 5" Reinf. Rock Base and 4' Sidewalk.

Construct 5" A.C. pavement W/ 5" reinf. rock base.

Construct std. comb. roll type curb & gutter (3-5/8")

WATER VALVE LOCATION TABLE

VALVE NUMBER	BASELINE STATION	OFFSET DISTANCE	OFFSET DIRECTION
V1	0-21.50	26'	Lt.
V2	2+19.94	24'	Lt.

Paving contractor will be responsible to operate all water valves on the project, in the presence of the inspector, to ensure accessibility to the valves, and that all valves are left in the "ON" position when the project is completed.

Curve #? Curve Data Based on Centerline
 Rad. = 100' Delta = 75° 18' 01" Tangent = 77.15'
 Arc = 131.42' L.C. = 122.17' Def/Ft. = 17.18923 Min.

Station	Arc	FACE CHORD LENGTHS		Defl.	T. Defl.
		8 Lt.	8 Rt.		
3+44.80	-	-	-	0'00"00"	0'00"00"
3+50.00	5.20'	6.50'	3.90'	1'29"23"	1'29"23"
3+75.00	25.00'	31.17'	18.70'	7'09"44"	8'39"07"
4+00.00	25.00'	31.17'	18.70'	7'09"44"	15'48"51"
4+25.00	25.00'	31.17'	18.70'	7'09"43"	22'58"34"
4+50.00	25.00'	31.17'	18.70'	7'09"44"	30'08"18"
4+76.22	26.22'	32.68'	19.61'	7'30"42"	37'39"00"

NOTE: ROLL TYPE CURB & GUTTER TO BE CONSTRUCTED ON THE PAVEMENT SHOWN ON THIS SHEET. TOP OF CURB ELEVATIONS ARE GIVEN FOR FULL HEIGHT CURB.

Baughman RIVENDALE ADDITION - PHASE 3
Victoria Street Paving
 Baughman Company, P.A. 315 8th St. Wichita, KS 67211 P 316-262-7771 F 316-262-0149
 ENGINEERING | SURVEYING | PLANNING | LANDSCAPE ARCHITECTURE

PROJECT NUMBER 472-63868	DESIGN MWS	DRAWN RDM
REVISIONS	APPROVED MWS	DATE 5-4-07
	SCALE Noted	SHEET 6 OF 39

Rivendale\Phase 3\STR1.dwg