

**Benchmark:**  
 City of Wichita Benchmark Disc,  
 Hydraulic and 55th Street South,  
 42.00' North of Centerline, 40.70'  
 West of Centerline, 3.70' North of  
 centerline of Power Pole, 58.20'  
 Northwest of Southeast Corner, Sec.  
 21, Twp. 28-S, R-1-E.  
 Elev. = 76.19 City Datum  
 Elev. = 1263.59 (NGVD29)

Curve #5  
 Curve Data Based on Centerline  
 Rad. = 200' Delta = 5° 53' 06" Tangent = 10.43'  
 Arc = 20.83' L.C. = 20.82' Def/Ft. = 8.59578 Min.

Station	Arc	FACE CHORD LENGTHS		Defl.	T. Defl.
		8 Lt.	8 Rt.		
0+00.00	-	-	-	0'00"00"	0'00"00"
0+10.41	10.41'	11.71'	9.11'	1'29"29"	1'29"29"
0+20.83	10.42'	11.72'	9.12'	1'29"34"	2'59"03"

Curve #6  
 Curve Data Based on Centerline  
 Rad. = 500' Delta = 14° 14' 49" Tangent = 62.49'  
 Arc = 124.33' L.C. = 124.01' Def/Ft. = 3.43769 Min.

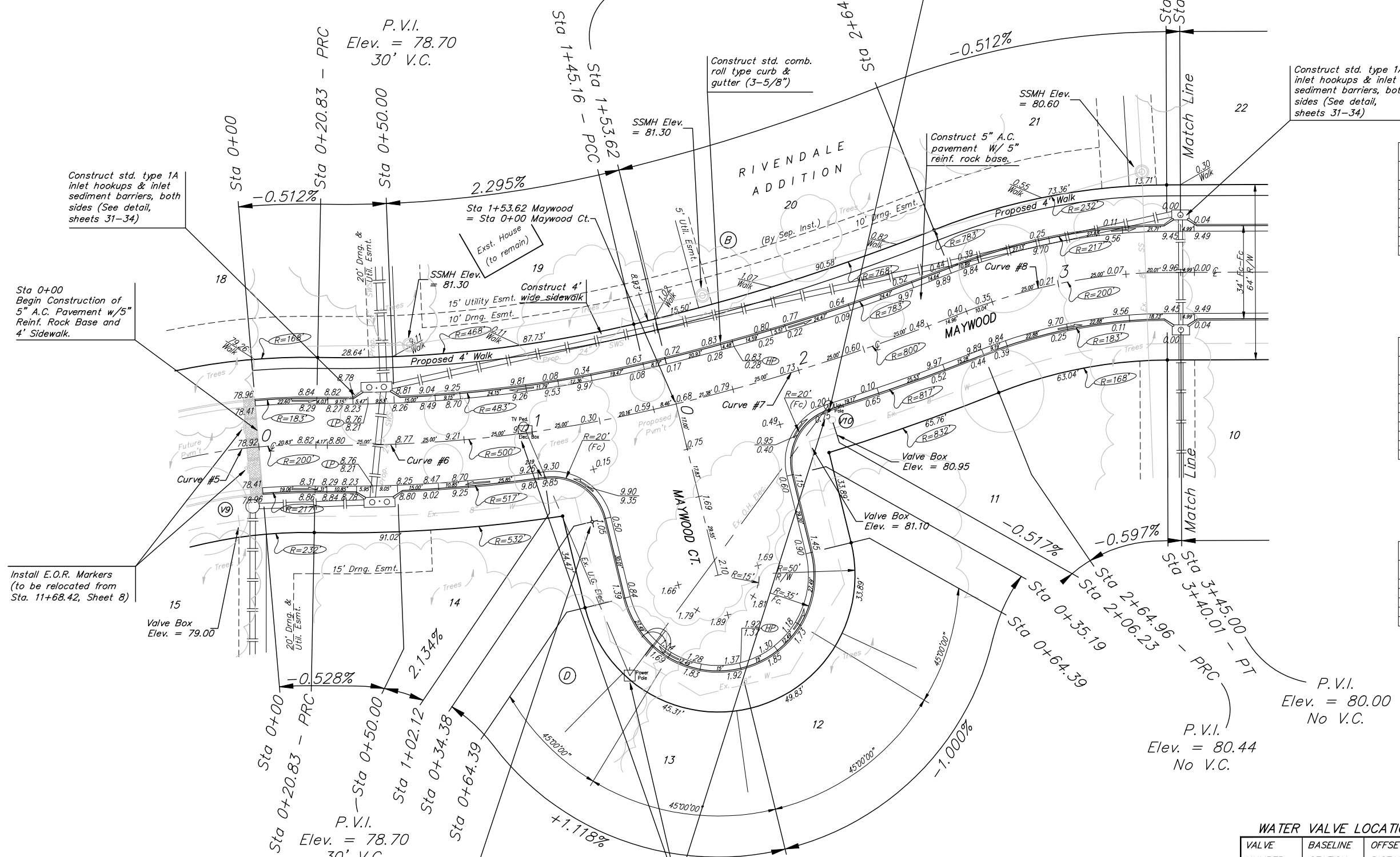
Station	Arc	FACE CHORD LENGTHS		Defl.	T. Defl.
		8 Lt.	8 Rt.		
0+20.83	-	-	-	0'00"00"	0'00"00"
0+25.00	4.17'	3.96'	4.38'	0'14"20"	0'14"20"
0+50.00	25.00'	23.75'	26.25'	1'25"56"	1'40"16"
0+75.00	25.00'	23.75'	26.25'	1'25"57"	3'06"13"
1+00.00	25.00'	23.75'	26.25'	1'25"57"	4'32"10"
1+02.12	2.12'	2.01'	2.23'	0'07"17"	4'39"22"
1+25.00	22.88'	21.73'	24.02'	1'18"59"	5'58"06"
1+45.16	20.16'	19.15'	21.17'	1'09"18"	7'07"24"

Curve #7  
 Curve Data Based on Centerline  
 Rad. = 800' Delta = 8° 34' 48" Tangent = 60.01'  
 Arc = 119.8' L.C. = 119.69' Def/Ft. = 2.14858 Min.

Station	Arc	FACE CHORD LENGTHS		Defl.	T. Defl.
		8 Lt.	8 Rt.		
1+45.16	-	-	-	0'00"00"	0'00"00"
1+50.00	4.84'	4.69'	4.99'	0'10"24"	0'10"24"
1+53.62	3.62'	3.51'	3.73'	0'07"46"	0'18"10"
1+75.00	21.38'	20.71'	22.05'	0'45"56"	1'04"07"
2+00.00	25.00'	24.22'	25.78'	0'53"43"	1'57"49"
2+06.23	6.23'	6.04'	6.42'	0'13"23"	2'11"13"
2+25.00	18.77'	18.18'	19.36'	0'40"20"	2'51"32"
2+50.00	25.00'	24.22'	25.78'	0'53"43"	3'45"15"
2+64.96	14.96'	14.49'	15.43'	0'32"08"	4'17"24"

Curve #8  
 Curve Data Based on Centerline  
 Rad. = 200' Delta = 21° 30' 04" Tangent = 37.97'  
 Arc = 75.05' L.C. = 74.61' Def/Ft. = 8.59472 Min.

Station	Arc	FACE CHORD LENGTHS		Defl.	T. Defl.
		8 Lt.	8 Rt.		
2+64.96	-	-	-	0'00"00"	0'00"00"
2+75.00	10.04'	11.29'	8.78'	1'26"17"	1'26"17"
3+00.00	25.00'	28.11'	21.86'	3'34"52"	5'01"09"
3+25.00	25.00'	28.11'	21.86'	3'34"52"	8'36"01"
3+40.01	15.01'	16.88'	13.13'	2'09"00"	10'45"02"



P.V.I.  
 Elev. = 80.00  
 No V.C.

P.V.I.  
 Elev. = 81.00  
 80' V.C.

P.V.I.  
 Elev. = 78.70  
 30' V.C.

P.V.I.  
 Elev. = 80.00  
 No V.C.

P.V.I.  
 Elev. = 80.44  
 No V.C.

P.V.I.  
 Elev. = 78.70  
 30' V.C.

P.V.I.  
 Elev. = 82.00  
 30' V.C.

**WATER VALVE LOCATION TABLE**

VALVE NUMBER	BASELINE STATION	OFFSET DISTANCE	OFFSET DIRECTION
V9	0-10.96	26'	Rt.
V10	2+06.23	24'	Rt.

**NOTE:** ROLL TYPE CURB & GUTTER TO BE CONSTRUCTED ON THE PAVEMENT SHOWN ON THIS SHEET. TOP OF CURB ELEVATIONS ARE GIVEN FOR FULL HEIGHT CURB.

Existing power pole, light pole, and electric box to be removed prior to construction. Contractor to contact Randy Truitt, Westar Energy at 261-6512 two weeks prior to construction for removal.

Paving contractor will be responsible to operate all water valves on the project, in the presence of the inspector, to ensure accessibility to the valves, and that all valves are left in the "ON" position when the project is completed.

**RIVENDALE ADDITION - PHASE 3**  
**Maywood & Maywood Ct.**  
 Street Paving

Baughman  
 ENGINEERING | SURVEYING | PLANNING | LANDSCAPE ARCHITECTURE

PROJECT NUMBER: 472-63868  
 REVISIONS:

DRAWN: RDM  
 MWS  
 DATE: 5-4-07  
 SCALE: Noted  
 SHEET: **10 OF 39**

Rivendale/Phase 3/STR1.dwg

Scale: 1" = 20'  
 • = Iron