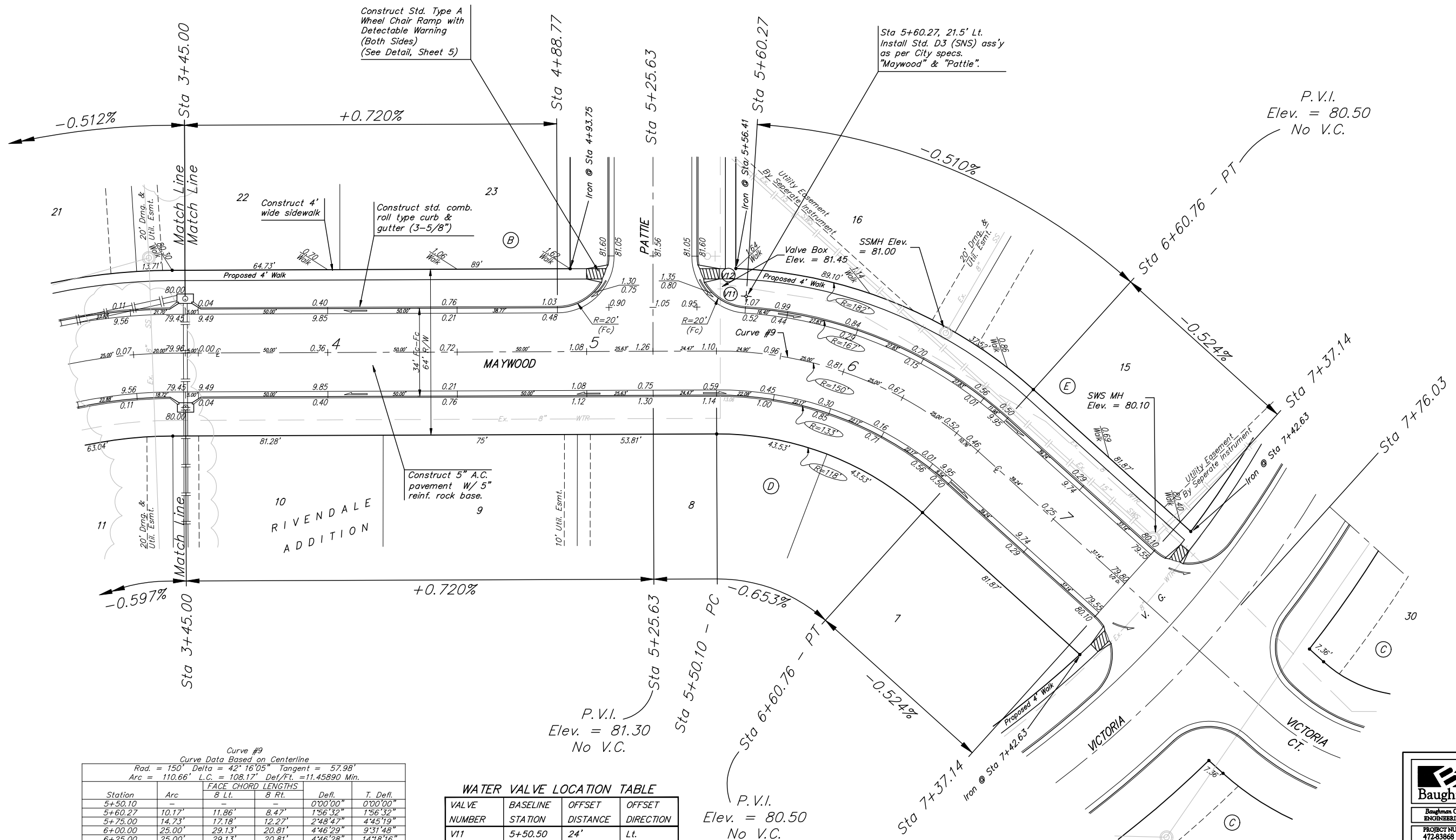


**Benchmark:**  
 City of Wichita Benchmark Disc,  
 Hydraulic and 55th Street South,  
 42.00' North of Centerline, 40.70'  
 West of Centerline, 3.70' North of  
 centerline of Power Pole, 58.20'  
 Northwest of Southeast Corner, Sec.  
 21, Twp. 28-S, R-1-E.  
 Elev. = 76.19 City Datum  
 Elev. = 1263.59 (NGVD29)

Scale: 1" = 20'  
 • = Iron



Curve #9  
 Curve Data Based on Centerline  
 Rad. = 150' Delta = 42° 16' 05" Tangent = 57.98'  
 Arc = 110.66' L.C. = 108.17' Def/Ft. = 11.45890 Min.

Station	Arc	FACE CHORD LENGTHS		Defl.	T. Defl.
		8 Lt.	8 Rt.		
5+50.10	-	-	-	0'00"00"	0'00"00"
5+60.27	10.17'	11.86'	8.47'	1'56"32"	1'56"32"
5+75.00	14.73'	17.18'	12.27'	2'48"47"	4'45"19"
6+00.00	25.00'	29.13'	20.81'	4'46"28"	9'31"48"
6+25.00	25.00'	29.13'	20.81'	4'46"28"	14'18"16"
6+50.00	25.00'	29.13'	20.81'	4'46"28"	19'04"44"
6+60.76	10.76'	12.55'	8.96'	2'03"18"	21'08"02"

**WATER VALVE LOCATION TABLE**

VALVE NUMBER	BASELINE STATION	OFFSET DISTANCE	OFFSET DIRECTION
V11	5+50.50	24'	Lt.
V12	5+53.20	26'	Lt.

Paving contractor will be responsible to operate all water valves on the project, in the presence of the inspector, to ensure accessibility to the valves, and that all valves are left in the "ON" position when the project is completed.

NOTE: ROLL TYPE CURB & GUTTER TO BE CONSTRUCTED ON THE PAVEMENT SHOWN ON THIS SHEET. TOP OF CURB ELEVATIONS ARE GIVEN FOR FULL HEIGHT CURB.

**Baughman** RIVENDALE ADDITION - PHASE 3  
**MAYWOOD** Street Paving

Baughman Company, P.A. 315 8th St. Wichita, KS 67211 P 316-262-7771 F 316-262-0149  
 ENGINEERING | SURVEYING | PLANNING | LANDSCAPE ARCHITECTURE

PROJECT NUMBER 472-63868	DESIGN MWS	DRAWN RDM
REVISIONS:	APPROVED MWS	DATE 5-4-07
	SCALE Noted	
	SHEET	<b>11 OF 39</b>

Rivendale Phase 3 STR1.dwg