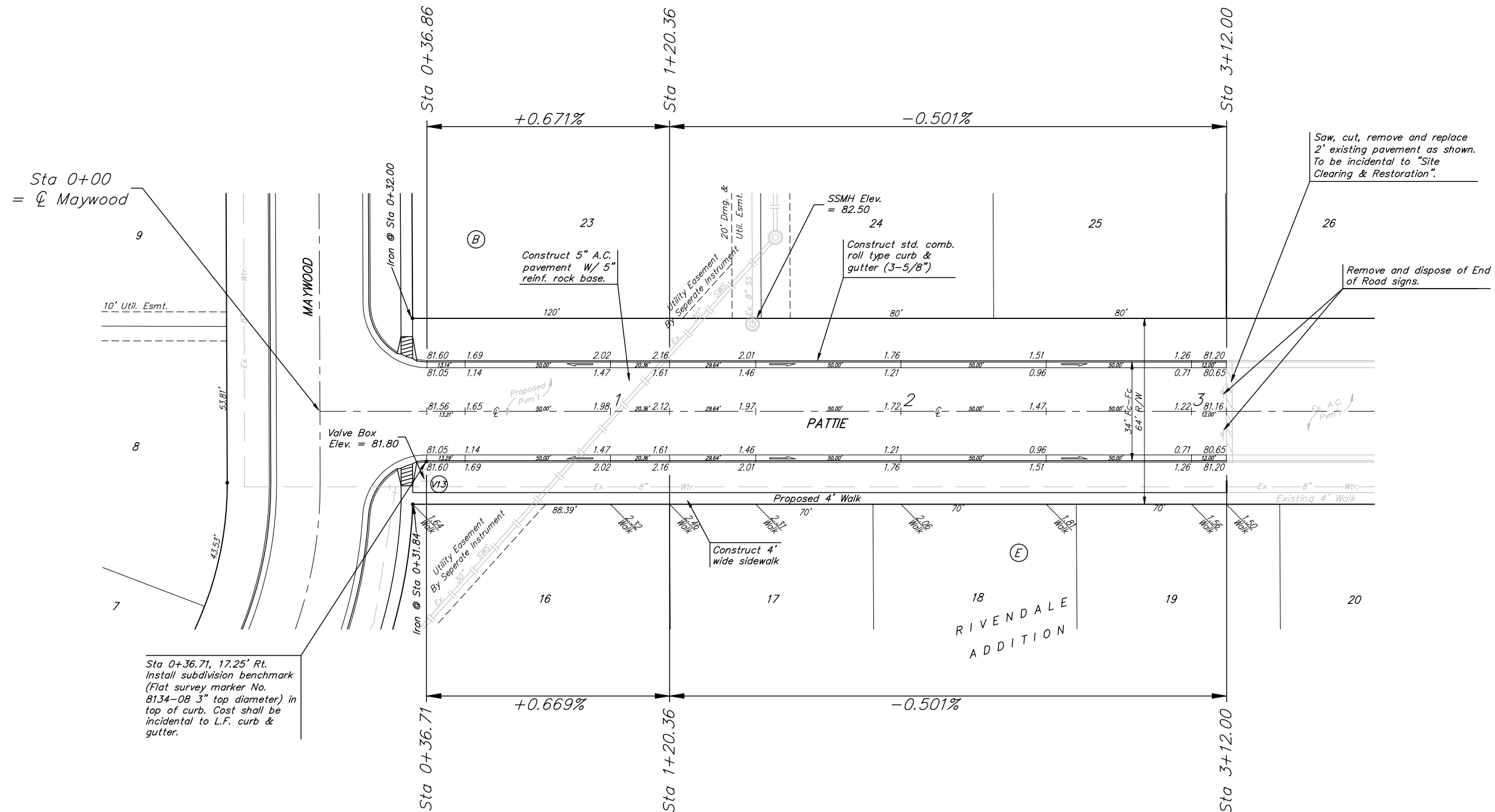


**Benchmark:**  
 City of Wichita Benchmark Disc,  
 Hydraulic and 55th Street South,  
 42.00' North of Centerline, 40.70'  
 West of Centerline, 3.70' North of  
 centerline of Power Pole, 58.20'  
 Northwest of Southeast Corner, Sec.  
 21, Twp. 28-S, R-1-E.  
 Elev. = 76.19 City Datum  
 Elev. = 1263.59 (NGVD29)



Scale: 1" = 20'  
 • = Iron

P.V.I.  
 Elev. = 82.16  
 No V.C.



Sta 0+36.71, 17.25' Rt.  
 Install subdivision benchmark  
 (Flat survey marker No.  
 8134-08 3" top diameter) in  
 top of curb. Cost shall be  
 incidental to L.F. curb &  
 gutter.

P.V.I.  
 Elev. = 82.16  
 No V.C.

WATER VALVE LOCATION TABLE

VALVE NUMBER	BASELINE STATION	OFFSET DISTANCE	OFFSET DIRECTION
V1.3	0+36.71	24'	Rt.

Paving contractor will be responsible to operate all water valves on the project, in the presence of the inspector, to ensure accessibility to the valves, and that all valves are left in the "ON" position when the project is completed.

NOTE: ROLL TYPE CURB & GUTTER TO BE CONSTRUCTED ON THE PAVEMENT SHOWN ON THIS SHEET. TOP OF CURB ELEVATIONS ARE GIVEN FOR FULL HEIGHT CURB.

		RIVENDALE ADDITION - PHASE 3	
Pattie		Street Paving	
Baughman Company, P.A. 315 8th St. Wichita, KS 67211 P 316-262-7271 F 316-262-0149			
ENGINEERING   SURVEYING   PLANNING   LANDSCAPE ARCHITECTURE			
PROJECT NUMBER 472-63868	DESIGN MWS	DRAWN RDM	
REVISIONS:	APPROVED MWS	DATE 5-4-07	
	SCALE Noted		
	SHEET		<b>12 OF 39</b>
Rivendale\Phase 3\STR1.dwg			