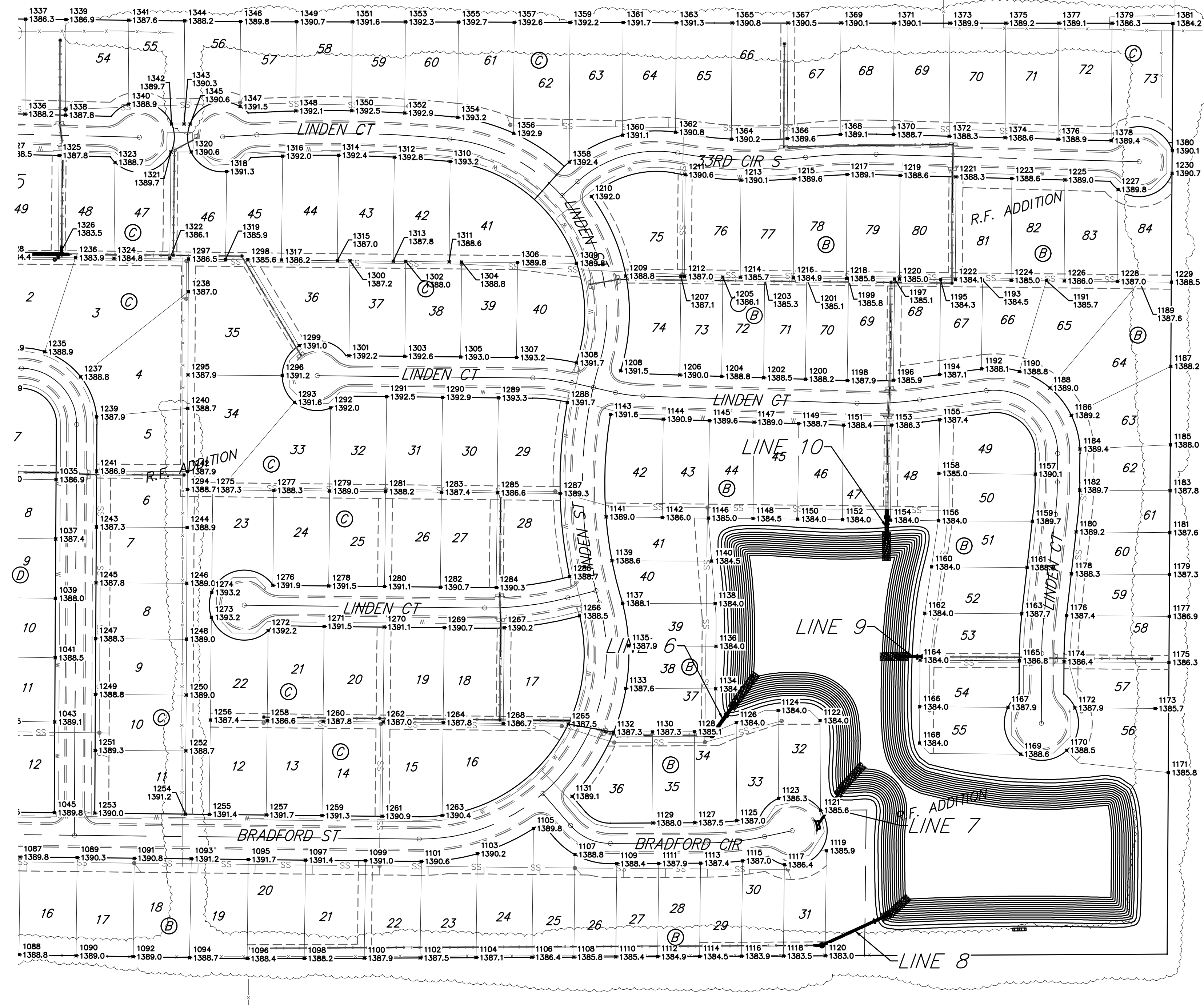
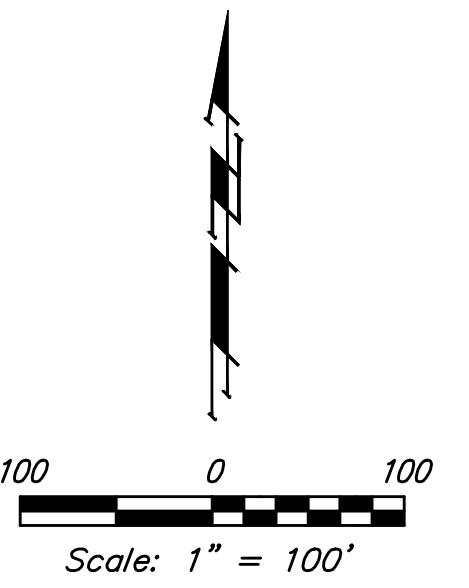


BENCHMARKS:

#1: "□" CUT CHISELED ON CURB,
15.2' S. OF SW COR., LOT 6,
BLOCK A, ROCKY FORD 2ND
ADDITION.
ELEV. = 1385.10 NAVD88

#2: "□" CUT CHISELED ON CURB,
8.6' N. & 11.7' W. OF SW COR.,
LOT 14, BLOCK C, ROCKY FORD
2ND ADDITION.
ELEV. = 1380.11 NAVD88

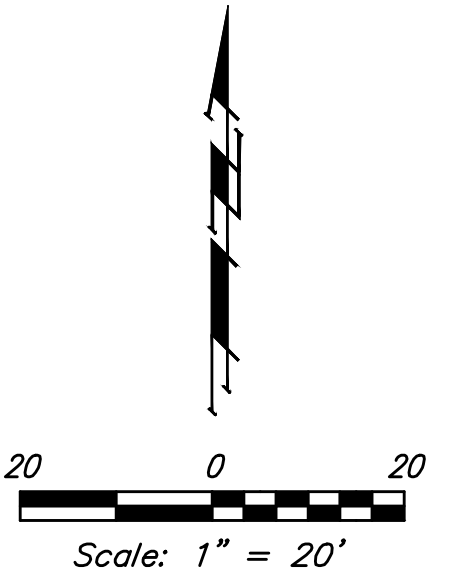


	R.F. Addition LOT CORNERS Stormwater Drain Improvements	
	Baughman Company, P.A. 315 Ellis St. Wichita, KS 67211 P 316-262-7271 F 316-262-0149 ENGINEERING SURVEYING PLANNING LANDSCAPE ARCHITECTURE	
PROJECT NUMBER 468-2019-085421	DESIGN AEG	DRAWN HW
REVISIONS:	APPROVED	DATE 04/23/20
	SCALE Noted	
	SHEET	2 OF 3

BENCHMARKS:

#1: "□" CUT CHISELED ON CURB,
15.2' S. OF SW COR., LOT 6,
BLOCK A, ROCKY FORD 2ND
ADDITION.
ELEV. = 1385.10 NAVD88

#2: "□" CUT CHISELED ON CURB,
8.6' N. & 11.7' W. OF SW COR.,
LOT 14, BLOCK C, ROCKY FORD
2ND ADDITION.
ELEV. = 1380.11 NAVD88



Point #	Northing	Eastng	Elev
1001	20841.33	12072.70	1384.4
1002	20891.67	11952.84	1380.8
1003	20743.78	12020.53	1385.0
1004	20815.50	11912.11	1380.8
1005	20662.59	11955.94	1385.7
1006	20752.12	11861.68	1380.8
1007	20595.40	11882.68	1385.7
1008	20693.63	11797.53	1379.0
1009	20543.00	11822.23	1384.8
1010	20638.72	11738.39	1377.5
1011	20491.27	11765.47	1384.0
1012	20576.88	11669.47	1376.5
1013	20430.55	11726.38	1383.3
1014	20483.04	11607.45	1376.0
1015	20360.74	11707.86	1382.6
1016	20375.37	11568.44	1375.5
1017	20288.63	11711.70	1382.0
1018	20261.60	11584.54	1375.0
1019	20196.79	11753.70	1385.0
1020	20176.75	11598.05	1383.3
1021	20409.25	11787.02	1383.4
1022	20349.35	11895.01	1380.5
1023	20500.56	11870.88	1384.9
1024	20402.33	11956.13	1380.5
1025	20552.96	11931.43	1385.8
1026	20454.73	12016.58	1380.5
1027	20605.47	11989.80	1385.8
1028	20512.02	12082.67	1380.5
1029	20662.96	12040.92	1385.3
1030	20573.60	12153.71	1380.5
1031	20783.91	12116.94	1384.6
1032	20643.16	12186.54	1381.0
1033	20772.40	12256.71	1387.9
1034	20642.40	12255.99	1382.0
1035	20641.41	12345.99	1386.9
1036	20613.68	12215.99	1380.8
1037	20556.41	12345.51	1387.4
1038	20557.84	12215.52	1380.5
1039	20471.41	12345.04	1388.0
1040	20472.84	12215.05	1380.5
1041	20386.41	12344.57	1388.5
1042	20387.84	12214.58	1381.0
1043	20294.41	12344.06	1389.1
1044	20295.84	12214.06	1381.5
1045	20164.41	12343.33	1389.8
1046	20165.40	12253.20	1389.5
1047	20295.40	12254.63	1382.5
1048	20166.28	12173.21	1389.0
1049	20296.27	12174.64	1381.5
1050	20167.16	12093.21	1388.6

Point #	Northing	Eastng	Elev
1051	20297.15	12094.64	1381.0
1052	20168.04	12013.22	1388.1
1053	20298.03	12014.65	1381.0
1054	20168.96	11933.22	1387.4
1055	20298.91	11934.65	1381.0
1056	20300.67	11774.58	1382.0
1057	20159.86	11089.37	1375.6
1058	19984.02	10935.73	1369.4
1059	20128.41	11152.77	1376.5
1060	19981.05	11110.14	1373.6
1061	20119.08	11226.61	1377.5
1062	19979.08	11225.08	1375.6
1063	20117.71	11306.60	1378.9
1064	19977.72	11305.07	1377.2
1065	20116.35	11386.59	1380.3
1066	19976.35	11385.06	1378.7
1067	20114.88	11472.58	1380.9
1068	19974.88	11471.05	1379.6
1069	20113.41	11558.57	1382.4
1070	19973.42	11557.03	1381.6
1071	20112.04	11638.58	1384.2
1072	19972.05	11637.02	1383.9
1073	20112.09	11718.57	1385.3
1074	19970.69	11717.01	1385.0
1075	20151.59	11789.01	1385.6
1076	19969.32	11797.00	1386.0
1077	20112.63	11879.14	1386.8
1078	19967.94	11877.55	1386.8
1079	20104.63	11959.06	1387.7
1080	19966.58	11957.54	1387.1
1081	20103.69	12045.05	1388.3
1082	19965.11	12043.53	1387.7
1083	20102.74	12131.05	1388.8
1084	19963.64	12129.52	1388.2
1085	20101.84	12212.74	1388.3
1086	19962.25	12211.21	1388.5
1087	20100.95	12294.44	1389.8
1088	19960.85	12292.90	1388.8
1089	20100.05	12376.13	1390.3
1090	19959.46	12374.59	1389.0
1091	20099.15	12457.83	1390.8
1092	19958.06	12456.28	1389.0
1093	20098.25	12539.52	1391.2
1094	19956.68	12537.10	1388.7
1095	20097.36	12621.22	1391.7
1096	19955.27	12619.66	1388.4
1097	20096.46	12703.01	1391.4
1098	19955.62	12701.46	1388.2
1099	20095.51	12789.01	1391.0
1100	19954.05	12787.47	1387.9

Point #	Northing	Eastng	Elev
1101	20094.65	12868.00	1390.6
1102	19956.45	12867.48	1387.5
1103	20105.65	12949.13	1390.2
1104	19956.86	12947.49	1387.1
1105	20141.75	13029.53	1389.8
1106	19957.26	13027.50	1386.4
1107	20104.30	13089.12	1388.8
1108	19957.56	13087.51	1385.8
1109	20091.42	13148.98	1388.4
1110	19957.86	13147.52	1385.4
1111	20091.72	13208.99	1387.9
1112	19958.16	13207.52	1384.9
1113	20092.02	13269.00	1387.4
1114	19958.47	13267.53	1384.5
1115	20092.43	13329.04	1387.0
1116	19958.77	13327.54	1383.9
1117	20089.93	13388.98	1386.4
1118	19959.07	13387.54	1383.5
1119	20109.92	13449.20	1385.9
1120	19959.37	13447.55	1383.0
1121	20167.88	13440.73	1385.6
1122	20096.21	13440.09	1384.0
1123	20164.72	13380.64	1386.3
1124	20310.91	13380.01	1384.0
1125	20152.86	13320.80	1387.0
1126	20283.26	13320.10	1384.0
1127	20149.98	13260.81	1387.5
1128	20280.32	13260.16	1385.1
1129	20149.68	13200.81	1388.0
1130	20280.02	13200.17	1387.3
1131	20187.75	13084.99	1389.1
1132	20279.74	13144.15	1387.3
1133	20342.28	13161.91	1387.6
1134	20341.82	13290.71	1384.0
1135	20403.27	13165.81	1387.9
1136	20402.82	13291.10	1384.0
1137	20464.30	13157.02	1388.1
1138	20463.83	13289.78	1384.0
1139	20525.35	13142.18	1388.6
1140	20524.84	13284.91	1384.5
1141	20587.99	13133.68	1389.0
1142	20587.07	13214.10	1386.0
1143	20734.83	13140.17	1391.6
1144	20727.99	13215.71	1389.9
1145	20725.81	13281.59	1389.6
1146	20586.33	13280.01	1385.0
1147	20723.70	13345.57	1389.0
1148	20585.60	13344.00	1384.5
1149	20721.58	13409.55	1388.7
1150	20584.87	13408.00	1384.0

Point #	Northing	Eastng	Elev
1151	20719.47	13473.53	1388.4
1152	20584.14	13472.00	1384.0
1153	20719.45	13542.33	1386.3
1154	20583.36	13540.78	1384.0
1155	20727.11	13611.21	1387.4
1156	20582.58	13609.56	1384.0
1157	20649.32	13748.24	1390.1
1158	20650.20	13610.33	1385.0
1159	20581.72	13744.09	1389.7
1160	20516.51	13599.84	1384.0
1161	20515.64	13736.58	1388.8
1162	20450.07	13590.04	1384.0
1163	20449.18	13729.03	1387.7
1164	20382.87	13583.29	1384.0
1165	20381.96	13725.57	1386.8
1166	20315.99	13582.87	1384.0
1167	20315.19	13709.22	1387.9
1168	20264.12	13582.54	1384.0
1169	20248.20	13727.59	1388.6
1170	20253.70	13793.35	1388.5
1171	20221.86	13938.89	1385.8
1172	20296.27	13805.16	1387.9
1173	20313.58	13920.02	1385.7
1174	20380.54	13789.56	1386.4
1175	20379.58	13939.88	1386.3
1176	20446.52	13783.14	1387.4
1177	20445.58	13940.29	1386.9
1178	20506.48	13799.55	1388.3
1179	20505.58	13940.67	1387.3
1180	20566.43	13806.76	1389.2
1181	20565.58	13941.04	1387.6
1182	20626.40	13811.96	1389.7
1183	20625.58	13941.42	1387.8
1184	20685.22	13812.29	1389.4
1185	20691.35	13941.83	1388.0
1186	20733.40	13799.85	1389.2
1187	20803.75	13942.53	1388.2
1188	20772.61	13769.20	1389.0
1189	20824.68	13897.79	1387.6
1190	20796.32	13725.45	1388.8
1191	20826.20	13764.37	1385.7
1192	20799.99	13671.40	1388.1
1193	20827.24	13672.85	1384.5
1194	20791.73	13611.30	1387.1
1195	20827.92	13612.85	1384.3
1196	20783.76	13545.21	1385.9
1197	20828.67	13546.86	1385.1
1198	20783.31	13479.20	1387.9
1199	20829.42	13480.86	1385.8
1200	20785.30	13419.22	1388.2

Point #	Northing	Eastng	Elev
1201	20830.10	13420.86	1385.1
1202	20787.28	13359.24	1388.5
1203	20830.78	13360.87	1385.3
1204	20789.26	13299.26	1388.8
1205	20831.47	13300.87	1386.1
1206	20791.25	13239.27	1390.0
1207	20832.15	13240.88	1387.1
1208	20797.23	13154.39	1391.5
1209	20833.04	13161.96	1388.8
1210	21046.86	13112.58	1392.0
1211	21077.87	13246.86	1390.6
1212	20832.09	13245.93	1387.0
1213	21070.31	13326.81	1390.1
1214	20831.18	13325.93	1385.7
1215	21072.18	13402.83	1389.6
1216	20830.32	13401.92	1384.9
1217	21078.15	13478.87	1389.1
1218	20829.45	13477.92	1385.8
1219	21077.21	13534.86	1388.6
1220	20828.59	13553.91	1385.0
1221	21074.96	13634.85	1388.3
1222	20827.68	13633.91	1384.1
1223	21072.71	13714.84	1388.6
1224	20826.77	13713.91	1385.0
1225	21070.57	13790.82	1389.0
1226	20825.91	13789.90	1386.0
1227	21056.82	13866.74	1389.8
1228	20825.04		